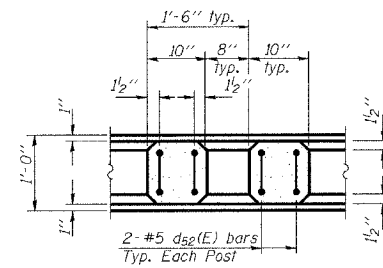


STATE OF ILLINOIS
DEPARTMENT OF TRANSPORTATION

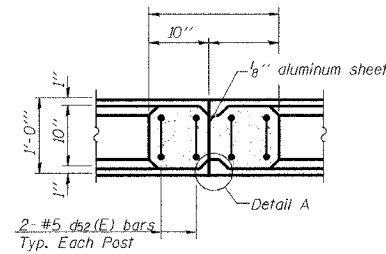
ROUTE NO. I. A. R. 846	SECTION 4B-1-1-1	COUNTY WILL	DIST. SHEETS 39	SHEET NO. 9
FED. ROAD DIST. NO. 7		ILLINOIS FEDERAL PROJECT		

CONTRACT NO. 62D28

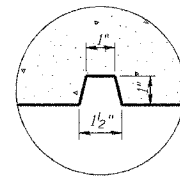
SHEET NO. S7
SHEETS S20



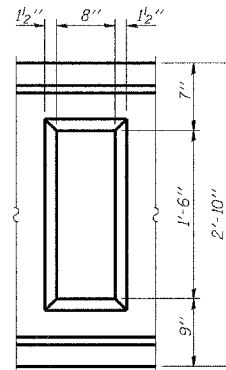
SECTION E-E



SECTION F-F
(For span greater than 50'-0")



DETAIL A



BILL OF MATERIAL

Bar	No.	Size	Length	Shape
d52(E)	312	#5	7'-4"	U
e50(E)	8	#7	32'-2"	—
e51(E)	8	#7	21'-11"	—
e52(E)	16	#5	16'-11"	—
e53(E)	8	#5	21'-5"	—

NOTE:

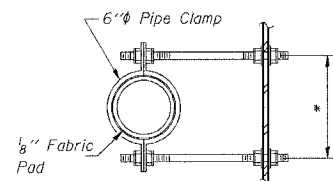
The above list of bars are for information only. All Reinforcement bars shown in this Bill of Material are included in the cost for "Concrete Bridge Rail (Special)".

SUPERSTRUCTURE & RAIL
BILL OF MATERIAL

Bar	No.	Size	Length	Shape
a50(E)	466	#5	21'-11"	—
a51(E)	143	#5	18'-1"	—
a52(E)	466	#6	6'-0"	—
a53(E)	143	#5	25'-3"	—
a54(E)	30	#6	8'-4"	U
a55(E)	6	#6	15'-8"	—
a56(E)	16	#7	23'-3"	—
b50(E)	235	#5	23'-0"	—
b51(E)	90	#6	14'-0"	—
b52(E)	164	#5	28'-4"	—
d50(E)	286	#5	2'-8"	L
d51(E)	466	#5	4'-8"	L
x51(E)	86	#5	5'-11"	—

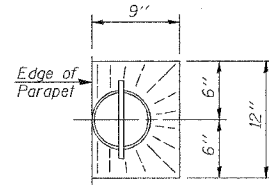
Reinforcement Bars, Epoxy Coated	Pound	39,320
Concrete Superstructure	Cu. Yds.	124
Concrete Bridge Rail (Special)	Foot	213

Bars indicated thus 1 x 2-#2 etc. indicates 1 line of bars with 2 lengths per line.

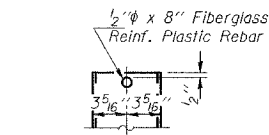


SECTION H-H

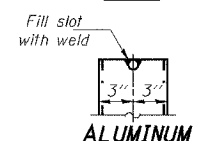
* Dimension as required by Pipe Clamp



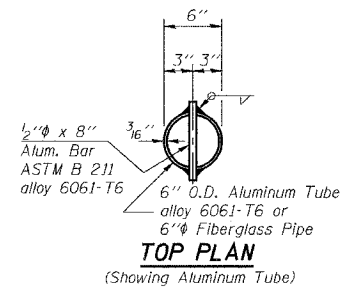
TOP PLAN



FIBERGLASS PIPE



ALUMINUM TUBE



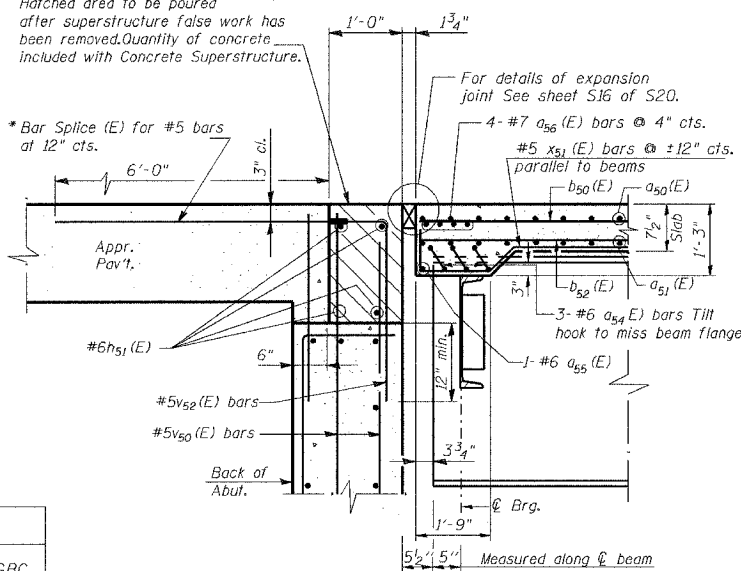
TOP PLAN
(Showing Aluminum Tube)

Notes:

The exterior surfaces of the floor drains shall be painted with the finish coat as specified in the special provisions for Cleaning and Painting New Metal Structures. The exterior surfaces of the drains shall be cleaned according to Steel Structures Painting Council's Spec. SSPC-SP1 prior to painting. Fiberglass pipe shall conform to ASTM D 2996, with short-time rupture strength hoop tensile stress of 30,000 p.s.i. minimum.

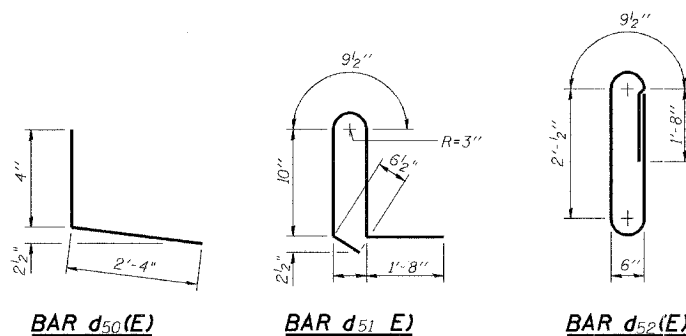
Hatched area to be poured after superstructure false work has been removed. Quantity of concrete included with Concrete Superstructure.

* Bar Splice (E) for #5 bars at 12" cts.



SECTION G-G

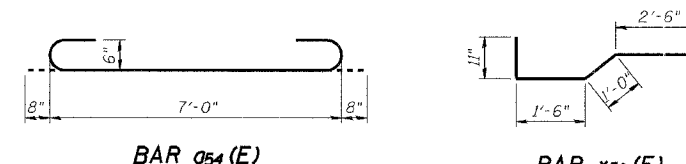
* Alternate with #4v50(E) bars. Place parallel to the beams.



BAR d50(E)

BAR d51(E)

BAR d52(E)



BAR a54(E)

BAR x51(E)

THIS SHEET IS FOR INFORMATION ONLY

MINIMUM BAR LAP	
(Parapet)	(Edge Beam)
#5 bar = 1'-8"	#6 bar = 2'-7"
#7 bar = 2'-8"	#7 bar = 4'-10"

NOTE:

Work this sheet together with sheets S5, S6 and S17.

DESIGNED	NDS/GMK
CHECKED	MTP/SMK/GBC
DRAWN	NDS/DCB
CHECKED	SMK/GBC

ILLINOIS DEPARTMENT OF TRANSPORTATION
SUPERSTRUCTURE DETAILS AND CONCRETE BRIDGE RAILING
(Sheet 2 of 2)
FAP 846
NB IL. ROUTE 53 OVER PRAIRIE CREEK STATION 1305+00 SECTION 4-RB
WILL COUNTY
STRUCTURE NO. 099-0090
SCALE: NONE
DATE: JUNE 2007
DELTA ENGINEERING INC.
CONSULTING ENGINEERS, CHE-00 ILLINOIS