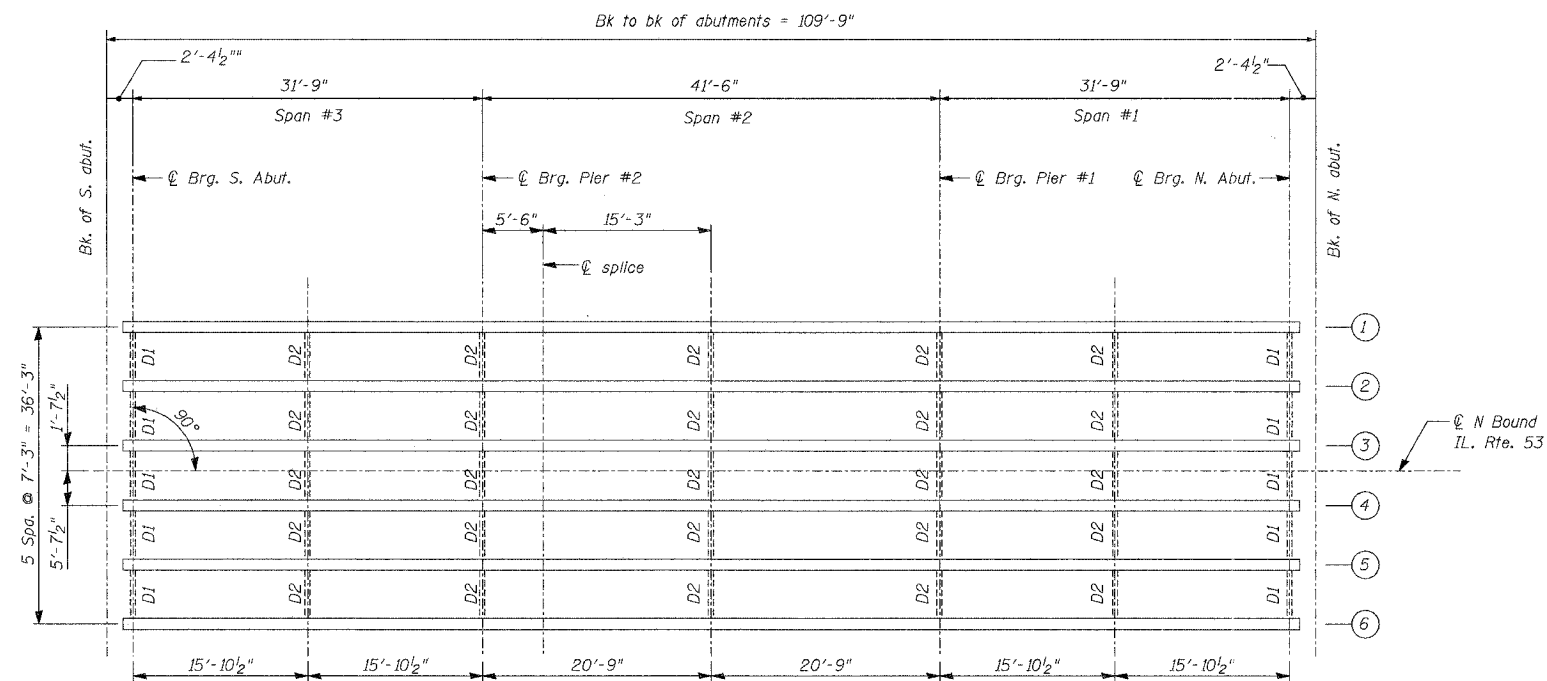
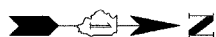


STATE OF ILLINOIS  
DEPARTMENT OF TRANSPORTATION

ROUTE NO. F. A. P. 846	SECTION 4B-1-1-1	COUNTY WILL	TOTAL SHEETS 39	SHEET 10	SHEET NO. S8 SHEETS S20
FED. ROAD DIST. NO. 7		ILLINOIS	FED. AID PROJECT-		

CONTRACT NO. 60D26

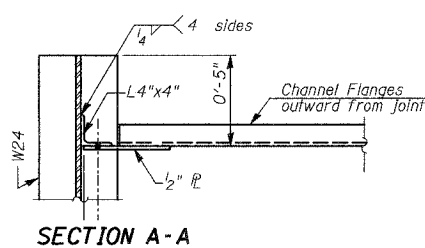


PLAN

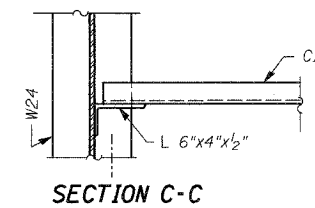
Note:  
All diaphragms shall be installed as steel is erected and secured with erection pins and bolts, except as otherwise noted. Individual diaphragms at support may be temporarily disconnected to install bearing anchor rods.

Legend:

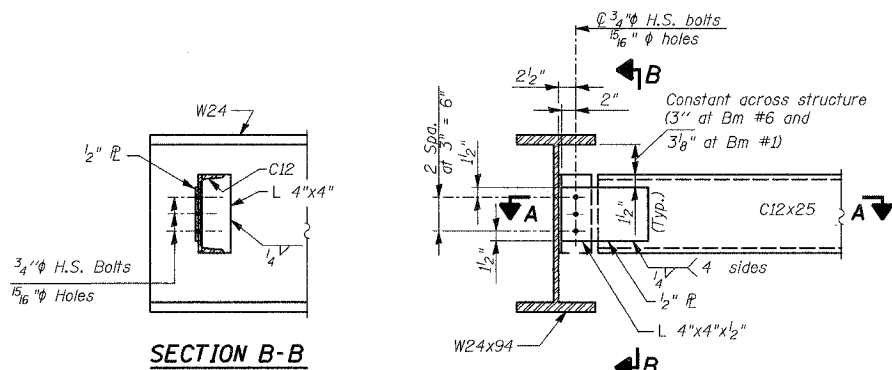
D1 = Exterior Diaphragm  
D2 = Interior Diaphragm



SECTION A-A

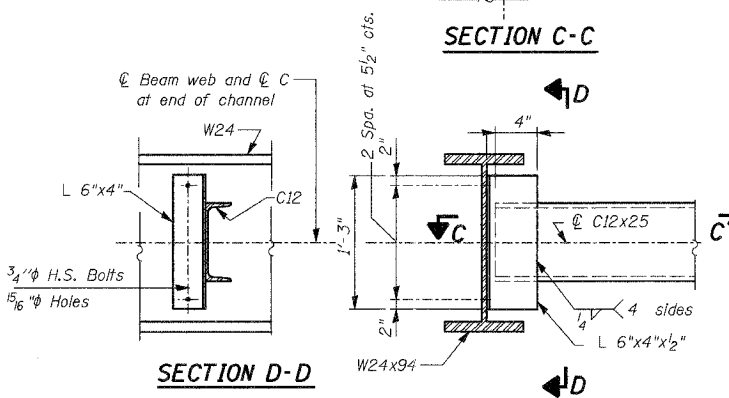


SECTION C-C



SECTION B-B

DIAPHRAGM D1  
(10 Required)

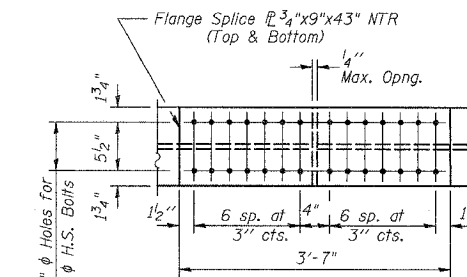


SECTION D-D

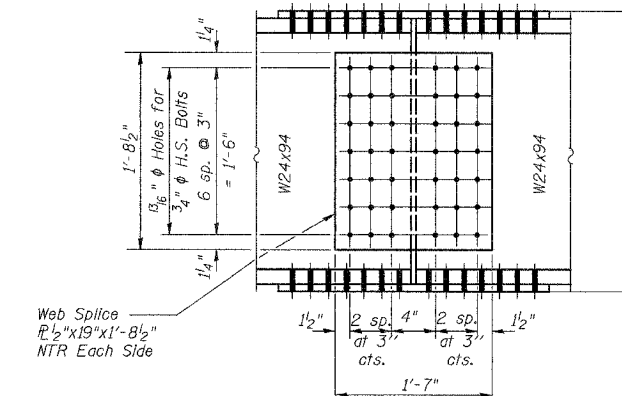
DIAPHRAGM D2  
(25 Required)

CONNECTION DETAILS FOR  
DIAPHRAGMS TO BEAMS

Note: Two hardened washers required for each set of oversized holes.



FLANGE SPLICE PLATE



WEB SPLICE PLATE  
(6 Required)

NTR = Notch toughness requirement

BILL OF MATERIAL

Item	Unit	Total
Furnishing Structural Steel	L Sum	0.52

NOTES: FOR INFORMATION ONLY

1. Install shear stud connectors in positive moment regions of the entire superstructure, as shown on sht. S8.
2. For cleaning and painting see general notes on sht. S2.
3. HS Bolts shall be AASHTO M164/ASTM A325.
4. Load carrying components designated "NTR" shall conform to the supplemental requirements for Notch toughness, Zone 2.

DESIGNED	NDS/GMK
CHECKED	MTP/SMK/GBC
DRAWN	NDS/DCB
CHECKED	SMK/GBC

ILLINOIS DEPARTMENT OF TRANSPORTATION

FRAMING PLAN AND STRUCTURAL  
STEEL DETAILS  
FAP 846  
NB IL. ROUTE 53 OVER PRAIRIE CREEK  
STATION 1305+00 SECTION 4-RB  
WILL COUNTY

STRUCTURE NO. 099-0090  
SCALE: NONE  
DATE: AUGUST 2007

DELTA ENGINEERING INC.  
CONSULTING ENGINEERS, CHICAGO, ILLINOIS