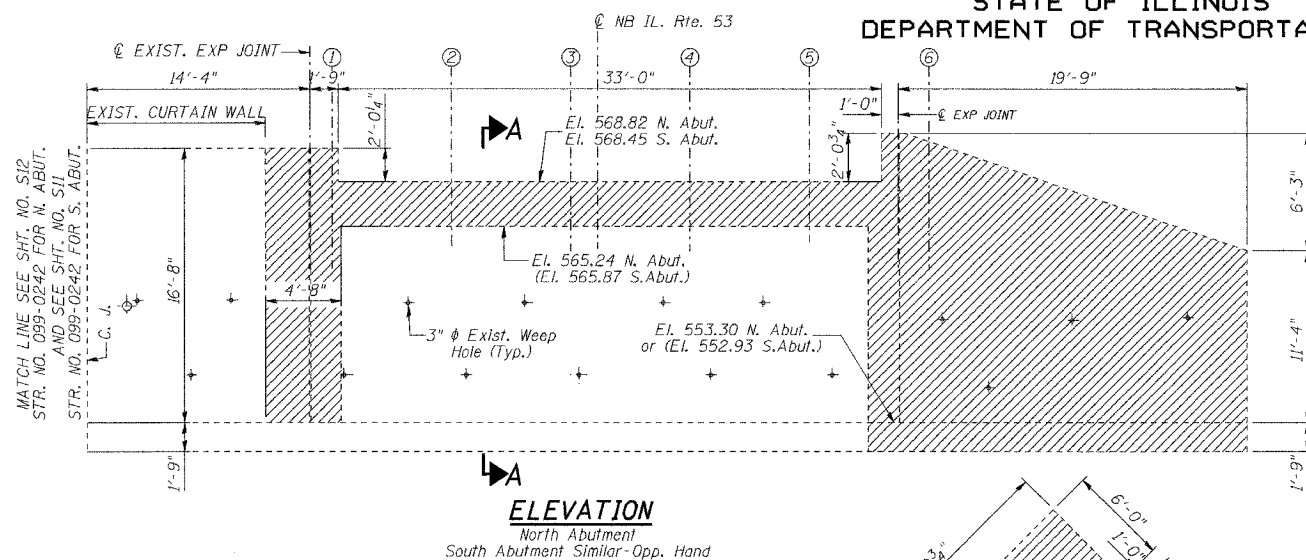


STATE OF ILLINOIS
DEPARTMENT OF TRANSPORTATION

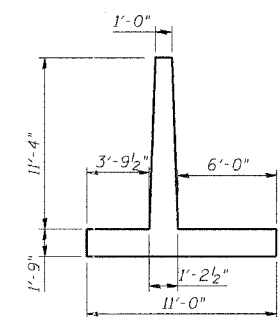
ROUTE NO.	SECTION	COUNTY	SHEET NO.	SHEET
F. A. P. 846	4B-1-1-1	WILL	39	13
FED. ROAD DIST. NO. 7	ILLINOIS	FED. AID PROJECT-		

SHEET NO. S-11
SHEETS S20

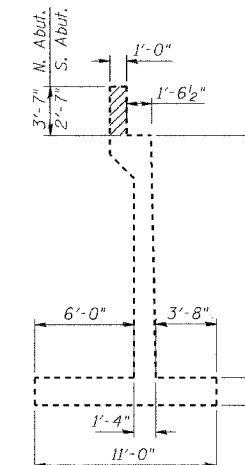
CONTRACT NO. 60D26



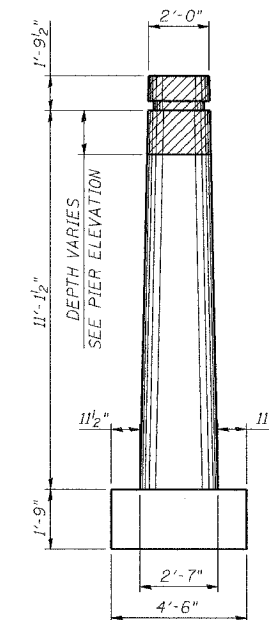
ELEVATION
North Abutment
South Abutment Similar-Opp. Hand



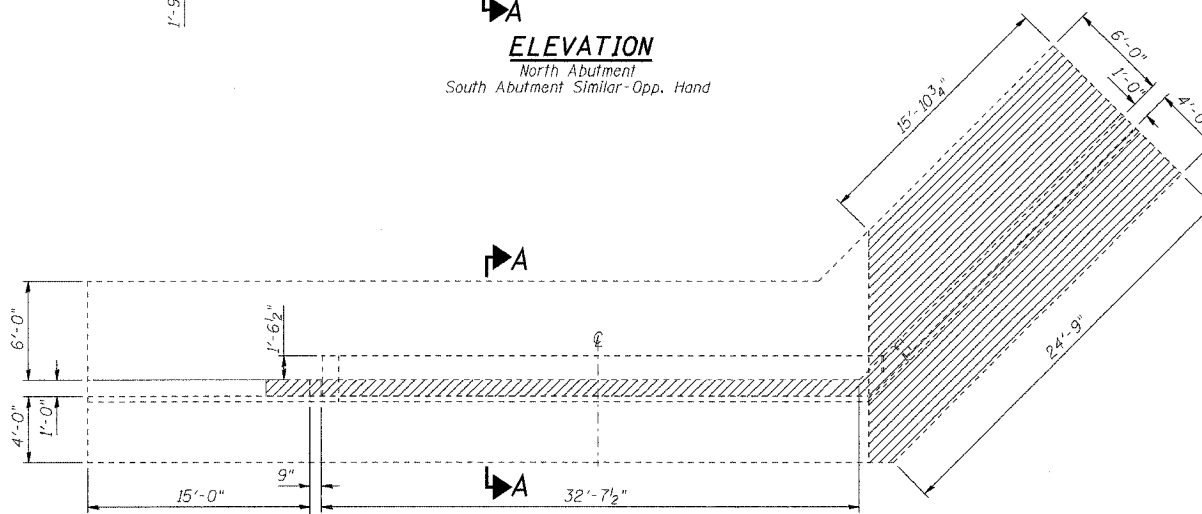
END OF WINGWALL



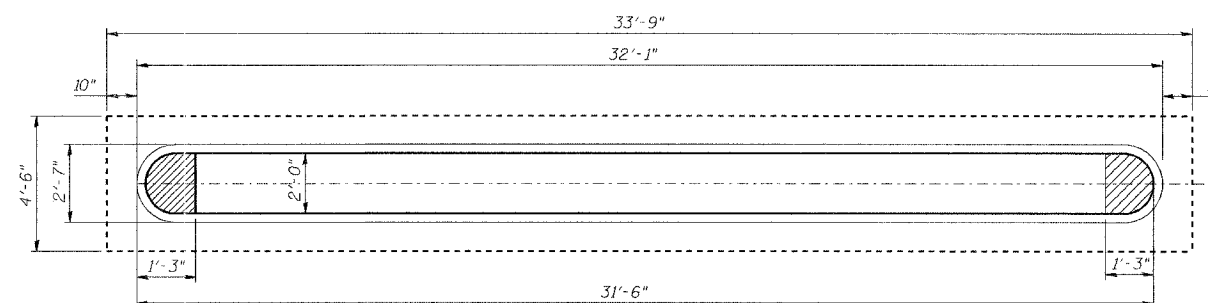
SECTION A-A



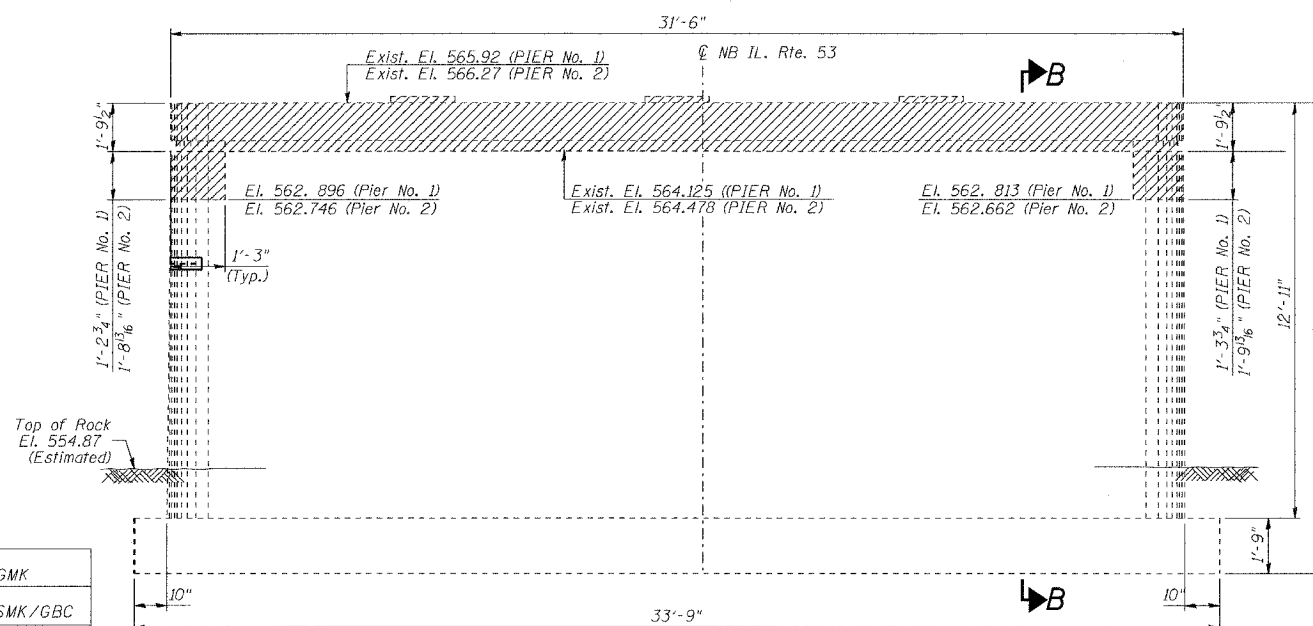
SECTION B-B



PLAN
North Abutment
South Abutment Similar-Opp. Hand



TOP PLAN
Pier No. 1 & Pier No. 2



ELEVATION
(LOOKING NORTH)
PIER No. 1 AND PIER No. 2

DESIGNED	NDS/GMK
CHECKED	MTP/SMK/GBC
DRAWN	NDS/DCB
CHECKED	SMK/GBC

BILL OF MATERIAL

PAY ITEM	UNIT	S. ABUT.	N. ABUT.	S. PIER	N. PIER	TOTAL
CONCRETE REMOVAL	CU YD	37.8	37.7	4.7	4.6	84.8

**THIS SHEET IS FOR
INFORMATION ONLY**

NOTES:

- Concrete removal shall be accomplished by methods that will not damage the existing Abutments and Piers.
- Any reinforcement bars that are damaged during concrete removal operations shall be repaired or replaced using an approved bar splicer or anchorage system. Cost included in the pay item for Concrete Removal.

LEGEND:

CONCRETE REMOVAL

ILLINOIS DEPARTMENT OF TRANSPORTATION

CONCRETE REMOVAL DETAILS

FAP 846
NB IL. ROUTE 53 OVER PRAIRIE CREEK
STATION 1305+00 SECTION 4-RB
WILL COUNTY

STRUCTURE NO. 099-0090
SCALE: NONE
DATE: JUNE 2007

DELTA ENGINEERING INC.
CONSULTING ENGINEERS, CHICAGO, ILLINOIS