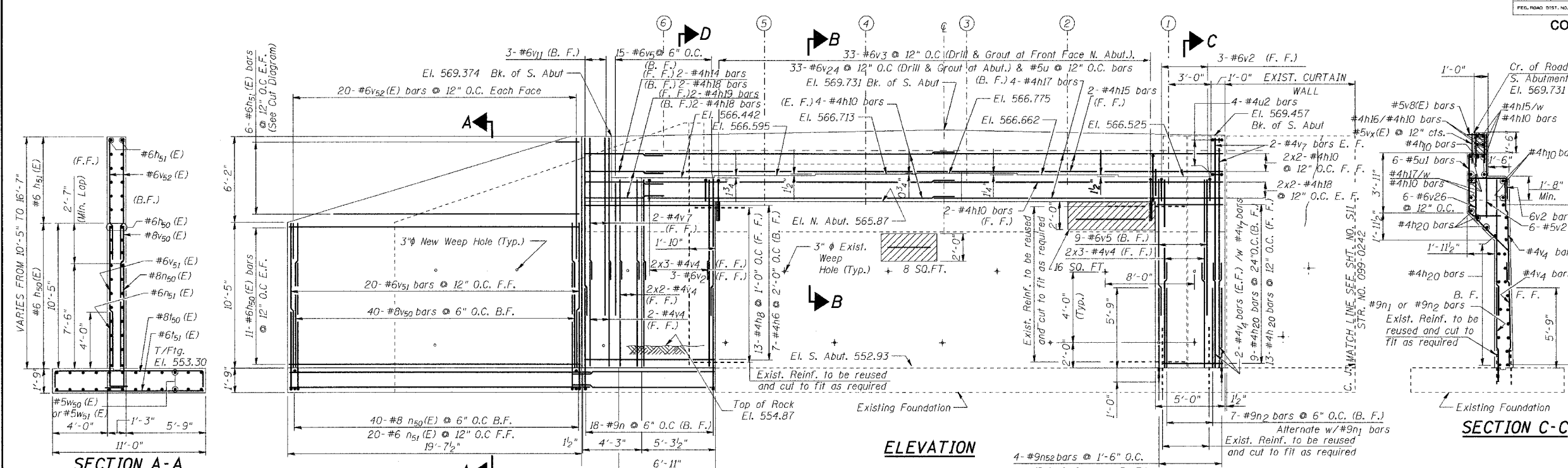


STATE OF ILLINOIS
DEPARTMENT OF TRANSPORTATION

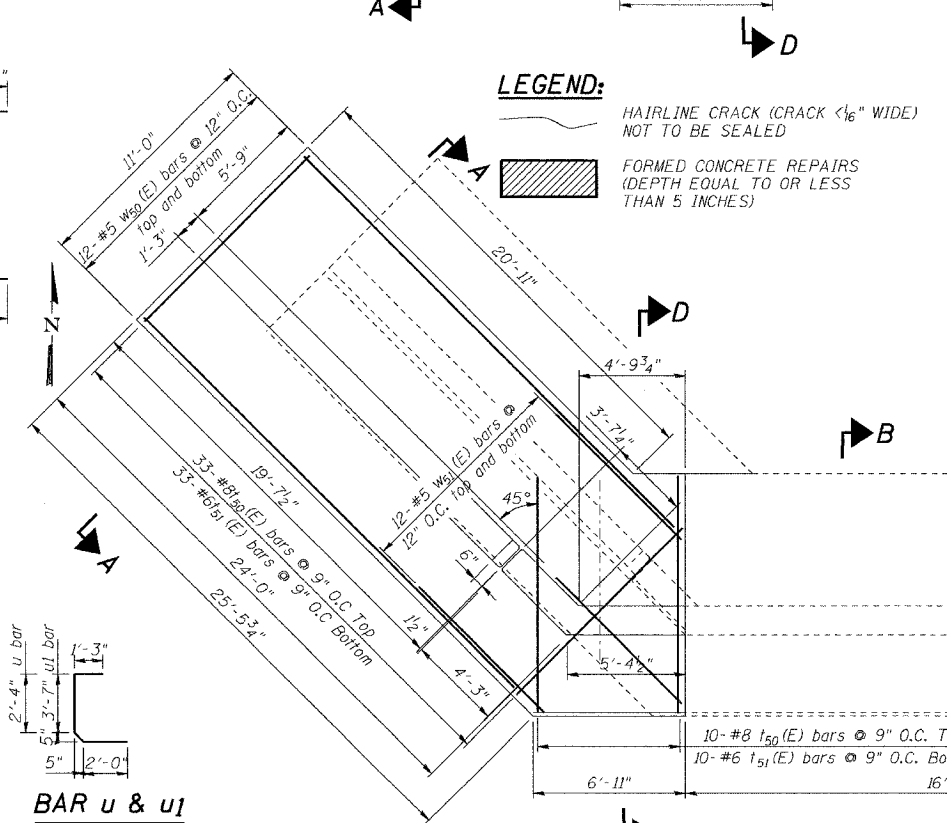
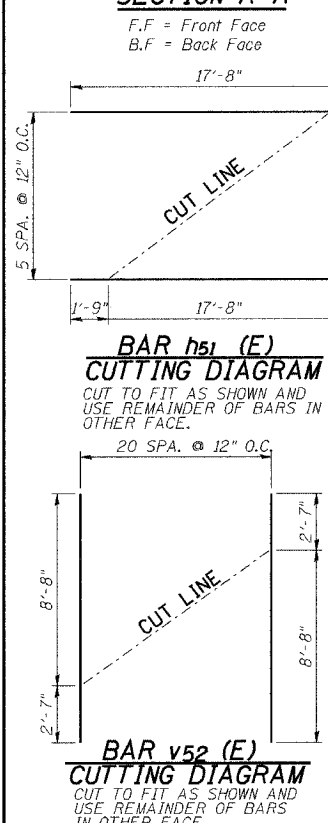
ROUTE NO.	SECTION	COUNTY	SHEET	SHEET NO. S12
F.A.P. 846	4B-1-1-1	WILL	39	14
FED. ROAD DIST. NO. 7	ILLINOIS	FED. AID PROJECT		SHEETS 520

CONTRACT NO. 60D26
BILL OF MATERIAL



Bar(E)	No.	Size	Length	Shape
h8(E)	1	#4	12'-0 1/4"	
h8(E)	13	#4	9'-3"	
h9(E)	6	#4	8'-2"	
h10(E)	14	#4	21'-5"	
h11(E)	1	#4	7'-11"	
h12(E)	1	#4	8'-6"	
h14(E)	6	#4	3'-8"	
h15(E)	2	#4	24'-5"	
h16(E)	2	#4	24'-4"	
h17(E)	2	#4	24'-3"	
h18(E)	5	#4	4'-2"	
h19(E)	2	#4	5'-10"	
h20(E)	22	#4	4'-10"	
h50(E)	22	#6	19'-4"	
h51(E)	6	#6	19'-5"	
v2(E)	3	#6	8'-9"	
v3(E)	33	#6	5'-6"	
v4(E)	20	#4	7'-9"	
v5(E)	16	#6	10'-5"	
v6(E)	33	#6	4'-1"	
v7(E)	8	#4	10'-1"	
v8(E)	42	#5	3'-3"	
v11(E)	3	#6	10'-5"	
v24(E)	66	#6	5'-10"	
v25(E)	42	#6	3'-1"	
v26(E)	12	#6	8'-9"	
v27(E)	12	#6	5'-3"	
v50(E)	40	#8	10'-3"	
v51(E)	20	#6	10'-3"	
v52(E)	20	#6	11'-3"	
u(E)	42	#5	6'-2"	
u1(E)	12	#5	7'-5"	
u2(E)	4	#4	3'-5"	
l(E)	18	#9	8'-3"	
l1(E)	59	#9	10'-9"	
l50(E)	43	#8	13'-4"	
l51(E)	43	#6	10'-8"	
n(E)	55	#9	10'-3"	
n1(E)	4	#9	6'-9"	
n2(E)	7	#9	5'-9"	
n50(E)	40	#8	10'-4"	
n51(E)	20	#6	6'-5"	
n52(E)	4	#9	6'-9"	
w1(E)	8	#4	13'-4"	
w2(E)	8	#4	14'-5"	
w3(E)	8	#4	15'-6"	
w50(E)	24	#5	24'-0"	
w51(E)	24	#5	8'-1"	

Bar	A	B	C	D	Length
h8(E)	5'-3"	4'-0"	2'-9 1/2"	2'-9 1/2"	9'-3"
h9(E)	5'-2"	3'-0"	2'-2"	2'-2"	8'-2"
h11(E)	6'-6"	1'-5"	11 3/4"	11 3/4"	7'-11"
h12(E)	7'-2"	1'-4"	11 1/4"	11 1/4"	8'-6"
h14(E)	2'-2"	1'-6"	1'-0 1/2"	1'-0 1/2"	3'-8"
h18(E)	3'-5"	0'-9"	0'-6 1/4"	0'-6 1/4"	4'-2"
h19(E)	3'-10"	2'-0"	1'-5"	1'-5"	5'-10"
v26(E)	5'-9"	3'-0"	2'-1 1/2"	2'-1 1/2"	8'-9"



PLAN (FOUNDATION)

- NOTES:**
- Any reinforcement bars that are damaged during concrete removal operations shall be repaired or replaced using an approved bar splicer or anchorage system. Cost included in the pay item for Concrete Removal.
 - Exposed reinforcement bars after removal of existing concrete will be cleaned and wire brushed and re-used before pouring new concrete.

DESIGNED	NDS/GMK
CHECKED	MTP/SMK/GBC
DRAWN	NDS/DCB
CHECKED	SMK/GBC

Concrete Structures	Cu. Yd.	60
Reinforcement Bars, Epoxy coated	Pound	7460
Structure Excavation	Cu. Yd.	475
Rock Excavation for Structures	Cu. Yd.	83
Structural Repair of Concrete (Depth greater than 5")	SQ FT	16.0
Structural Repair of Concrete (Depth Equal to or Less Than 5")	SQ FT	8.0

Reinforcement Bars designated (E) shall be epoxy coated.
Cast steps monolithically with abutment.
Space top reinforcement to miss anchor bolts.

ILLINOIS DEPARTMENT OF TRANSPORTATION

**SOUTH ABUTMENT
REPAIRS & EXTENSION**

FAP 846
NB IL. ROUTE 53 OVER PRAIRIE CREEK
STATION 1305+00 SECTION 4-RB
WILL COUNTY
STRUCTURE NO. 099-0090

SCALE: NONE
DATE: JUNE 2007

DETA ENGINEERING INC.
CONSULTING ENGINEERS, CHICAGO, ILLINOIS