

STATE OF ILLINOIS  
DEPARTMENT OF TRANSPORTATION

ROUTE NO. F. & P. 846	SECTION 4B-1-1-1	COUNTY WILL	SHEET NO. 39	SHEET NO. 16
ILLINOIS DEPARTMENT OF TRANSPORTATION				

SHEET NO. S14  
SHEETS S20

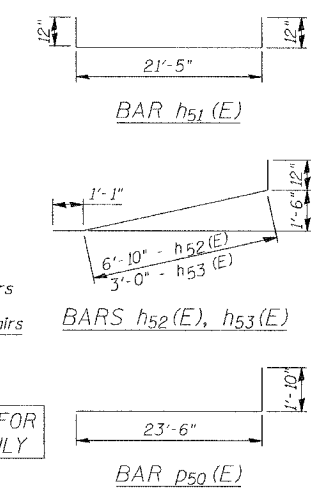
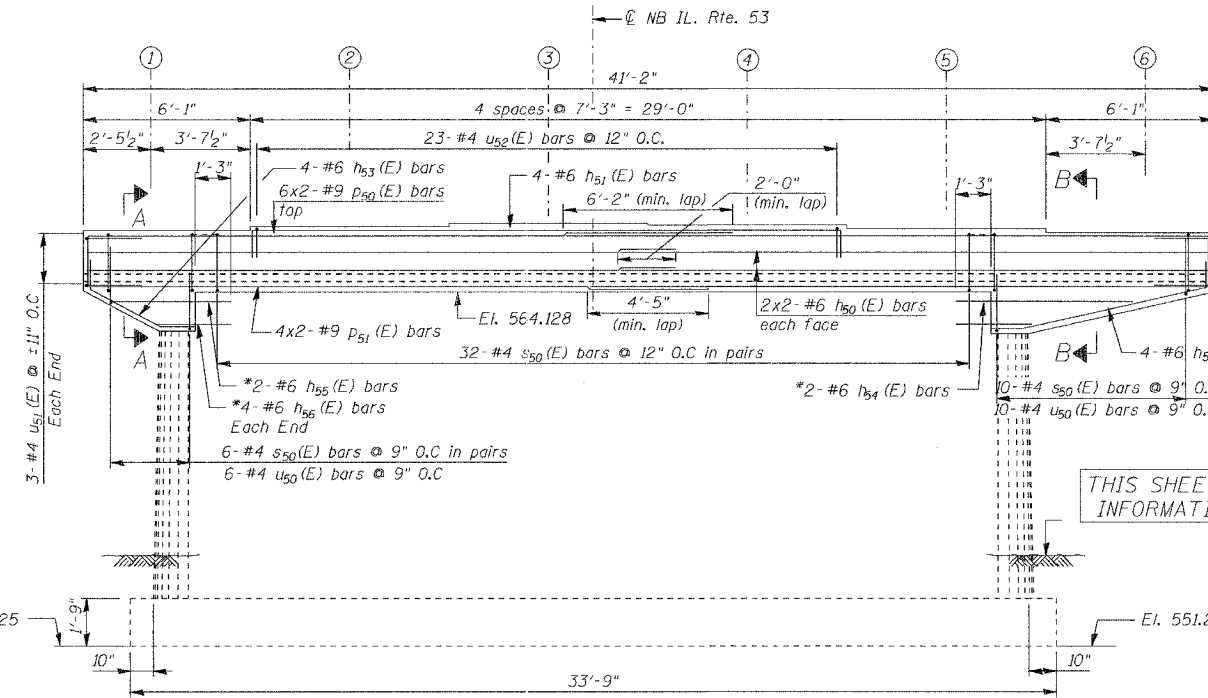
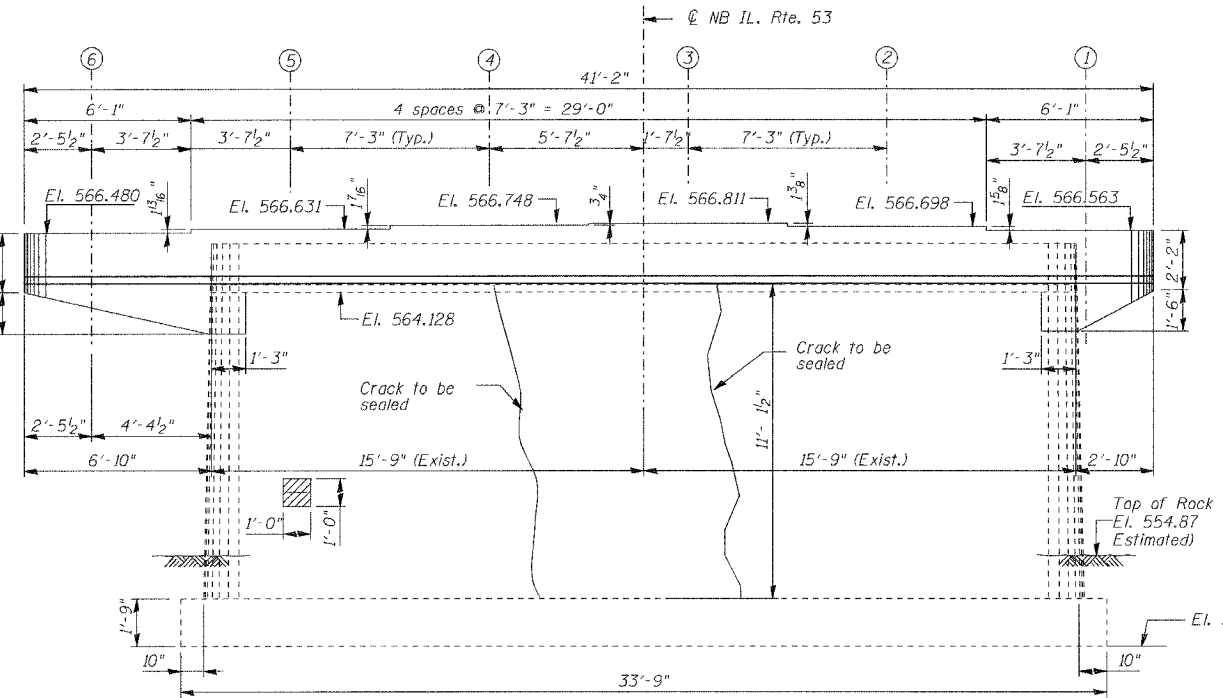
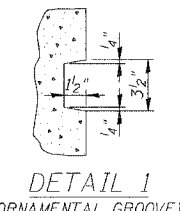
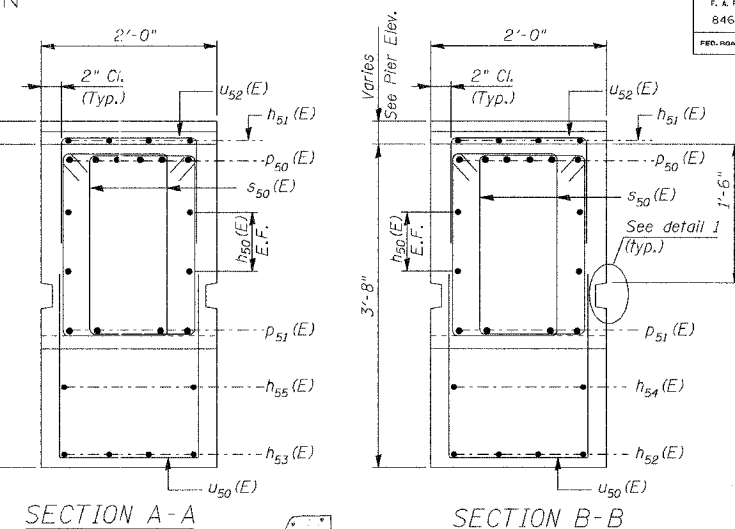
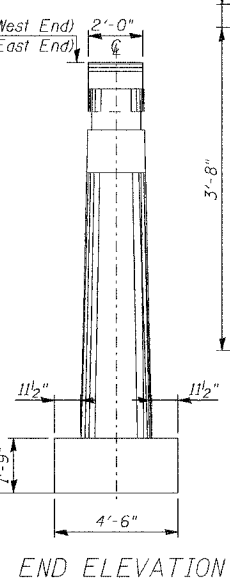
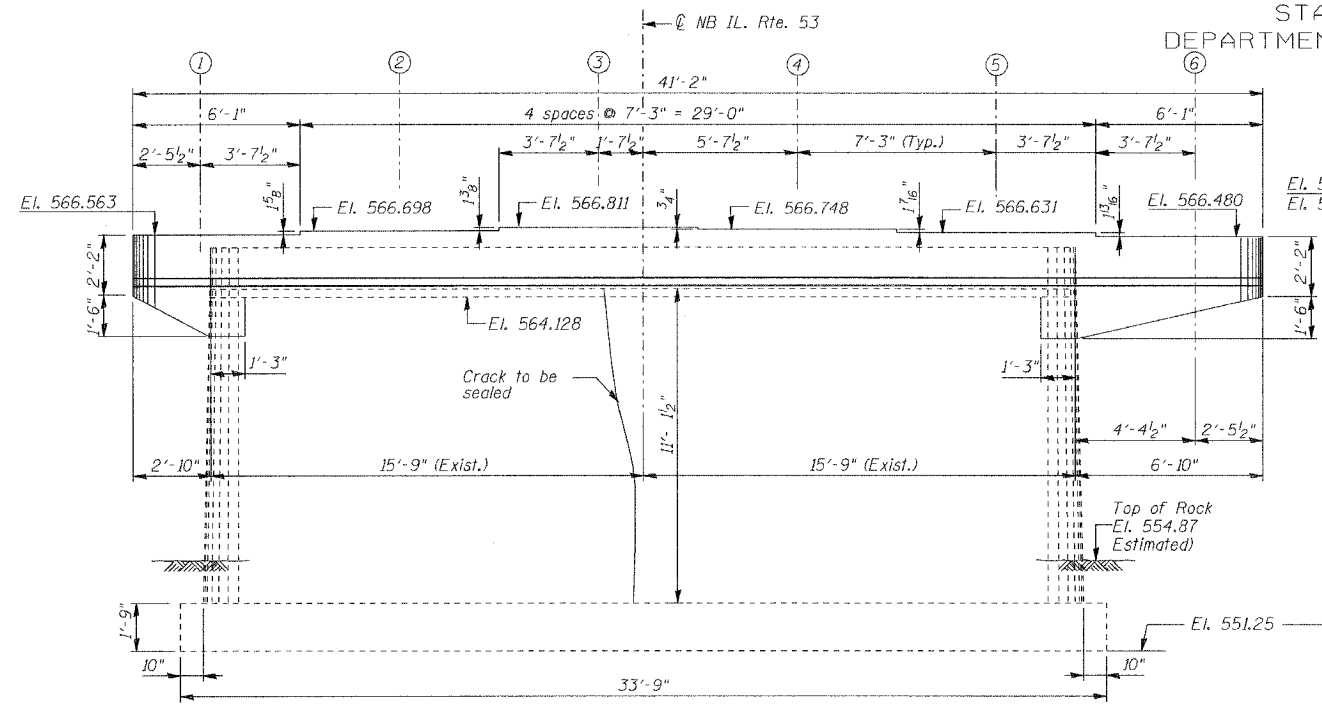
CONTRACT NO. 60D26

BILL OF MATERIAL

Bar	No.	Size	Length	Shape
$h_{50}(E)$	8	#6	21'-10"	
$h_{51}(E)$	4	#6	23'-5"	
$h_{52}(E)$	4	#6	8'-11"	
$h_{53}(E)$	4	#6	5'-1"	
$h_{54}(E)$	2	#6	5'-7"	
$h_{55}(E)$	2	#6	4'-3"	
$h_{56}(E)$	8	#6	2'-4"	
$p_{50}(E)$	12	#9	25'-4"	
$p_{51}(E)$	8	#9	22'-8"	
$s_{50}(E)$	96	#4	7'-3"	
$u_{50}(E)$	16	#4	5'-9"	
$u_{51}(E)$	6	#4	7'-8"	
$u_{52}(E)$	23	#4	3'-8"	

Reinforcement Bars, Epoxy Coated	Pound	2870
Concrete Structures	Cu. Yd.	8.6
Structural Repair of Concrete (Depth Equal To or Less Than 5")	SQ FT	1.0
Epoxy Crack Injection	Foot	23.0

Reinforcement Bars designated (E) shall be epoxy coated.  
Cast steps monolithically with cap.  
Space cap reinforcement to miss anchor bolts.

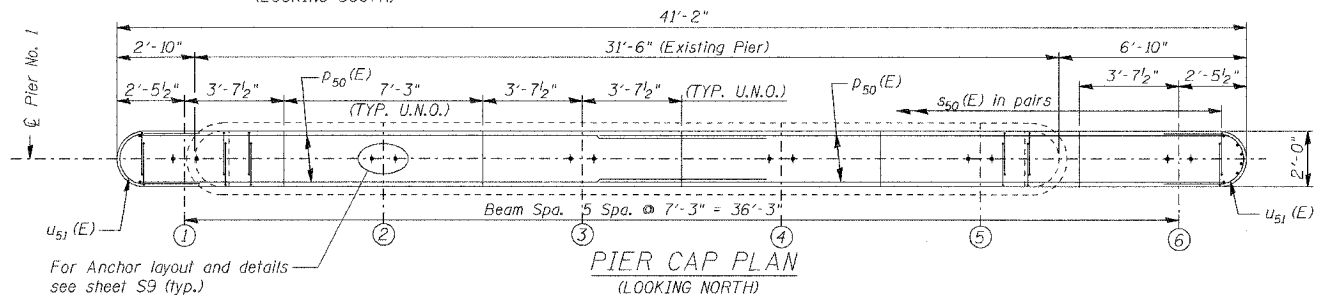


THIS SHEET IS FOR INFORMATION ONLY

**LEGEND:**

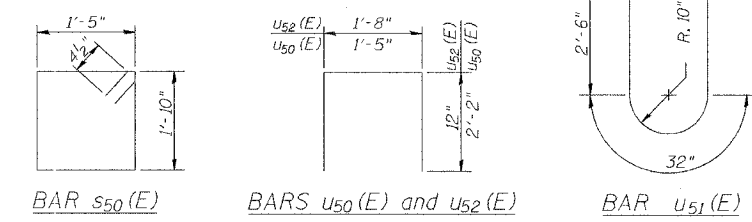
- Hairline crack (crack < 1/16" wide) Not to be sealed Unless Noted Otherwise
- Spall with exposed rebar

DESIGNED	NDS/GMK
CHECKED	MTP/SMK/GBC
DRAWN	NDS/DCB
CHECKED	SMK/GBC



**ELEVATION (LOOKING NORTH) (SHOWING REINFORCEMENT ONLY)**

\* Drill and grout #6  $h_{54}(E)$ ,  $h_{55}(E)$  and  $h_{56}(E)$  bars in 1" dia. x 15" min. drilled holes according to Article 584 of the Standard Specifications.



ILLINOIS DEPARTMENT OF TRANSPORTATION

PIER NO. 1  
REPAIRS & EXTENSION

FAP 846  
NB IL. ROUTE 53 OVER PRAIRIE CREEK  
STATION 1305+00 SECTION 4-RB  
WILL COUNTY

STRUCTURE NO. 099-0090

SCALE: NONE  
DATE: JUNE 2007

**DEI** DELTA ENGINEERING INC.  
CONSULTING ENGINEERS, CHICAGO, ILLINOIS