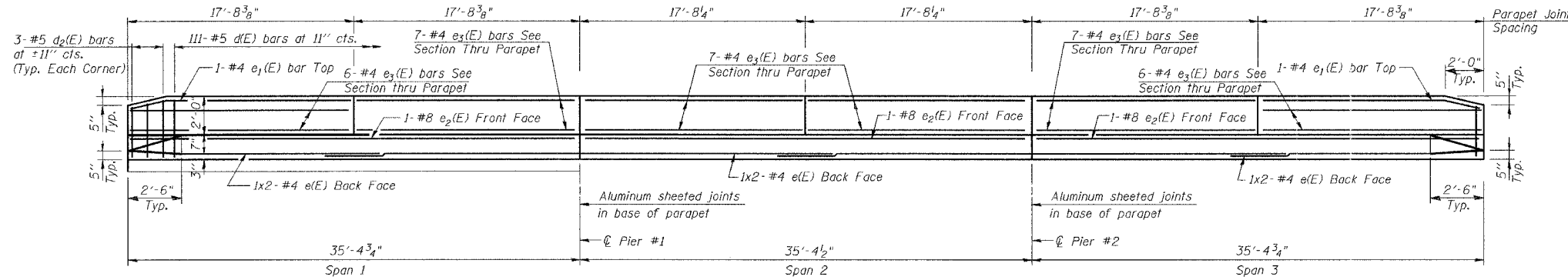


STATE OF ILLINOIS
DEPARTMENT OF TRANSPORTATION

ROUTE NO.	SECTION	COUNTY	SHEET NO.	SHEET NO. 96
F. A. R.	4B-1-R	WILL	39	28
FED. ROAD DIST. NO. 7		ILLINOIS	FED. AID PROJECT	

CONTRACT NO. 60D26

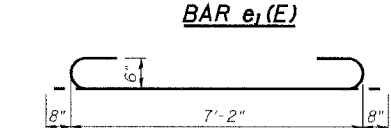
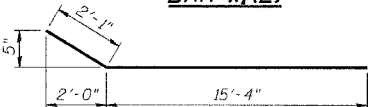
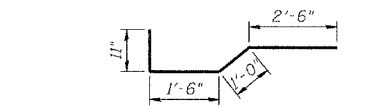
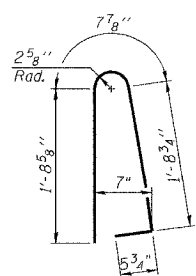
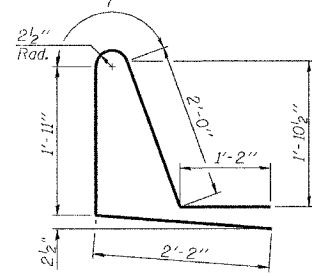
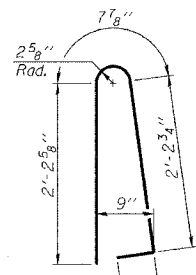
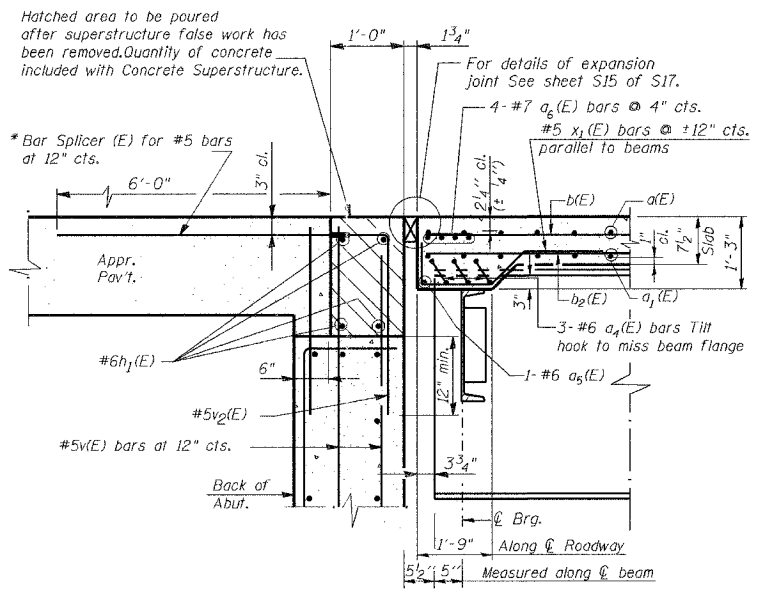
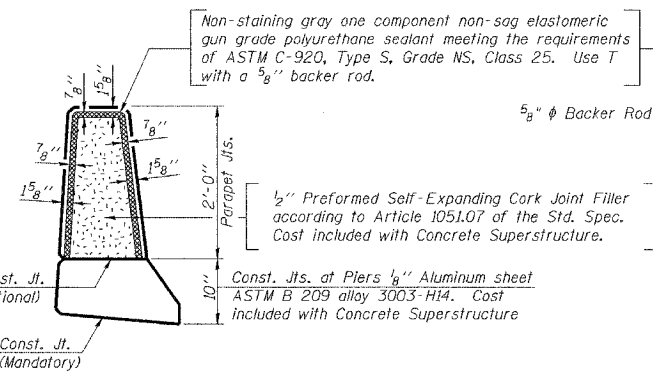
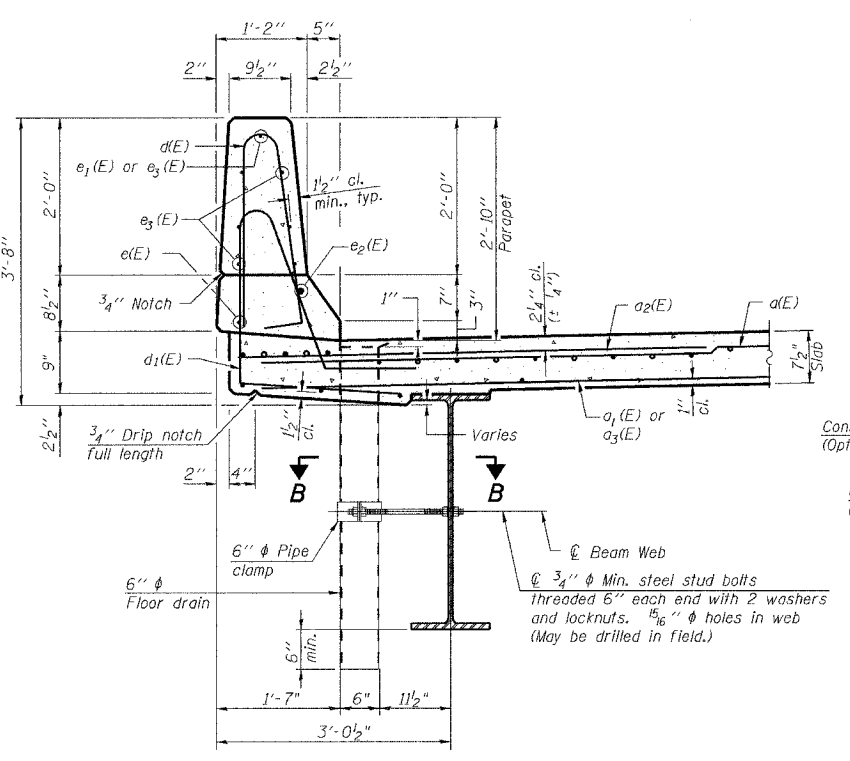


**SUPERSTRUCTURE
BILL OF MATERIAL**

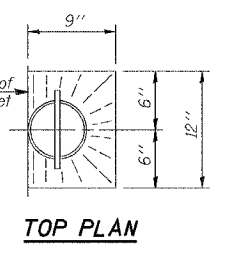
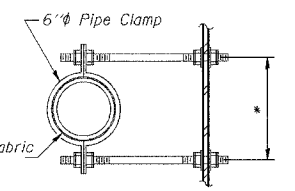
Bar	No.	Size	Length	Shape
a(E)	464	#5	22'-2"	—
a ₁ (E)	143	#5	18'-3"	—
a ₂ (E)	464	#6	6'-0"	—
a ₃ (E)	143	#5	25'-10"	—
a ₄ (E)	30	#6	8'-6"	—
a ₅ (E)	6	#6	15'-11"	—
a ₆ (E)	16	#7	23'-10"	—
b(E)	235	#5	22'-11"	—
b ₁ (E)	90	#6	14'-6"	—
b ₂ (E)	164	#5	28'-1"	—
d(E)	222	#5	5'-7"	Δ
d ₁ (E)	234	#5	7'-10"	—
d ₂ (E)	12	#5	4'-7"	Δ
e(E)	12	#4	18'-3"	—
e ₁ (E)	4	#4	17'-5"	—
e ₂ (E)	6	#8	35'-1"	—
e ₃ (E)	80	#4	17'-5"	—
x ₁ (E)	88	#5	5'-11"	—
Reinforcement Bars, Epoxy Coated		Pound	40,150	
Concrete Superstructure		Cu. Yds.	149.0	

MINIMUM BAR LAP

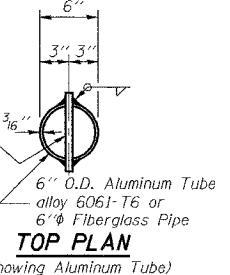
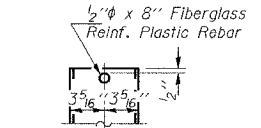
(Parapet) (Edge Beam)
#4 bar = 1'-4" #6 bar = 2'-7"
#8 bar = 3'-5" #7 bar = 4'-10"



SECTION B-B



FIBERGLASS PIPE



DESIGNED	NDS/GMK
CHECKED	MTP/SMK/GBC
DRAWN	NDS/GMK
CHECKED	SMK/GBC

Notes:
The exterior surfaces of the floor drains shall be painted with the finish coat as specified in the special provisions for Cleaning and Painting New Metal Structures. The exterior surfaces of the drains shall be cleaned according to Steel Structures Painting Council's Spec. SSPC-SP1 prior to painting. Fiberglass pipe shall conform to ASTM D 2996, with short-time rupture strength hoop tensile stress of 30,000 p.s.i. minimum.

THIS SHEET IS FOR INFORMATION ONLY

ILLINOIS DEPARTMENT OF TRANSPORTATION

SUPERSTRUCTURE DETAILS

FAP 846
SB IL. ROUTE 53 OVER PRAIRIE CREEK
STATION 1305+00 SECTION 4B-1-R
WILL COUNTY

STRUCTURE NO. 099-0242

SCALE: NONE
DATE: JUNE 2007

DEI DELTA ENGINEERING INC.
CONSULTING ENGINEERS, CHICAGO, ILLINOIS