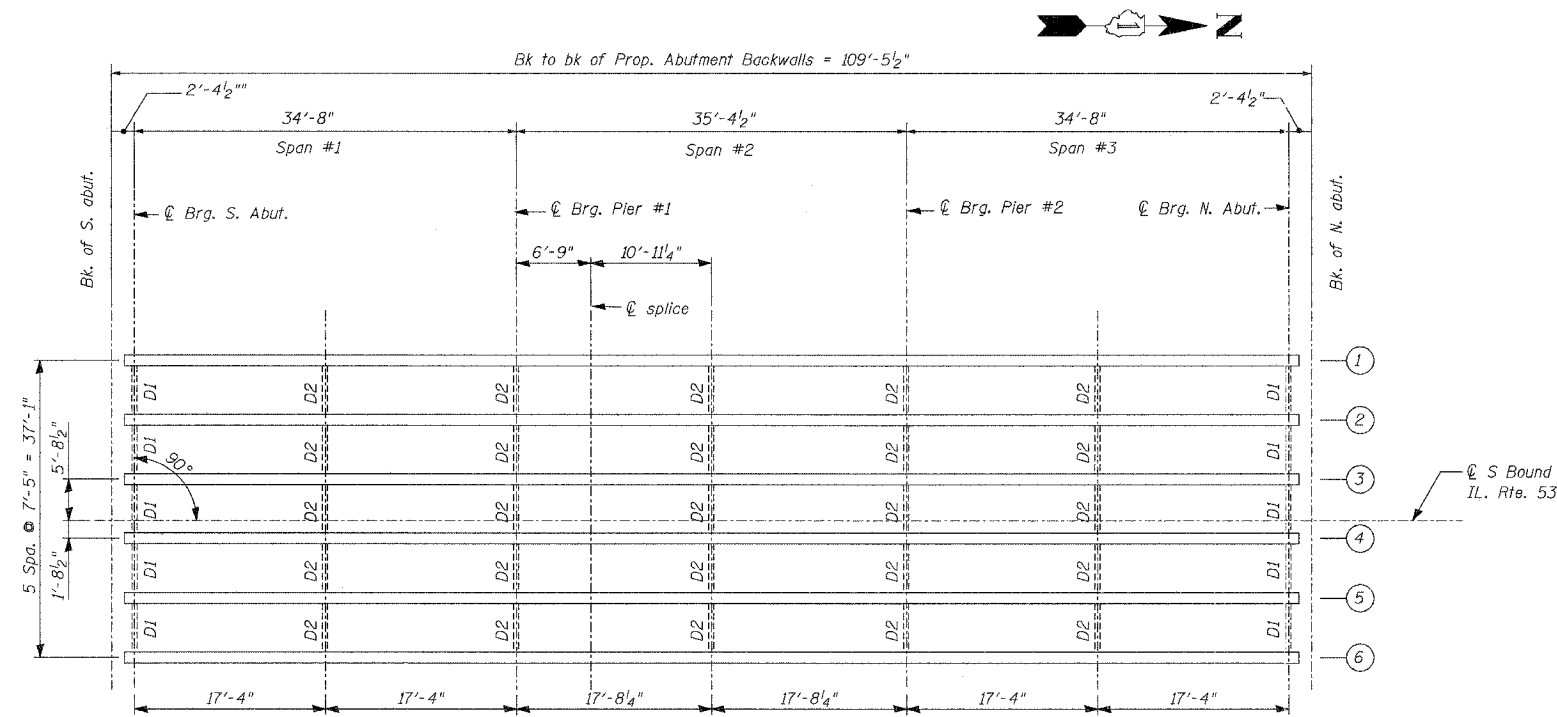


STATE OF ILLINOIS
DEPARTMENT OF TRANSPORTATION

ROUTE NO.	SECTION	COUNTY	SHEET NO.	SHEET
F. A. P. 846	4B-1-R	WILL.	39	29
FED. ROAD DIST. NO. 7	ILLINOIS	FED. AID PROJECT-		

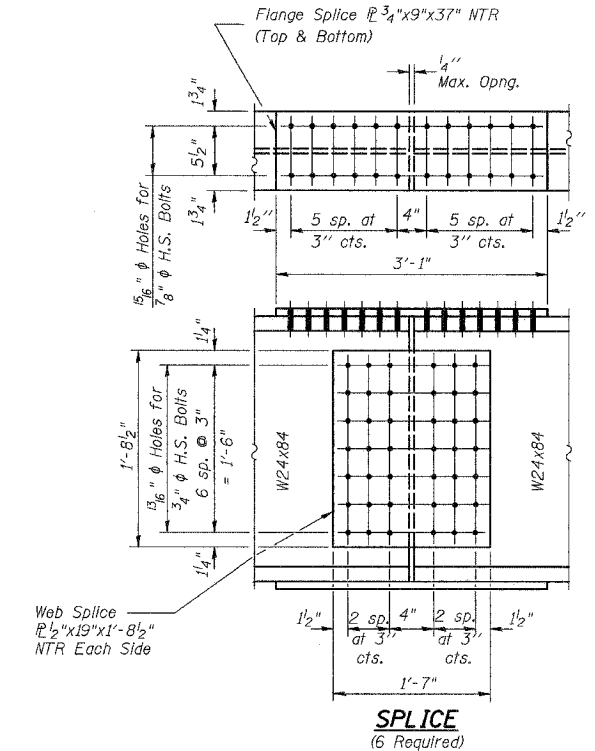
SHEET NO. S7
SHEETS S17

CONTRACT NO. 60D26



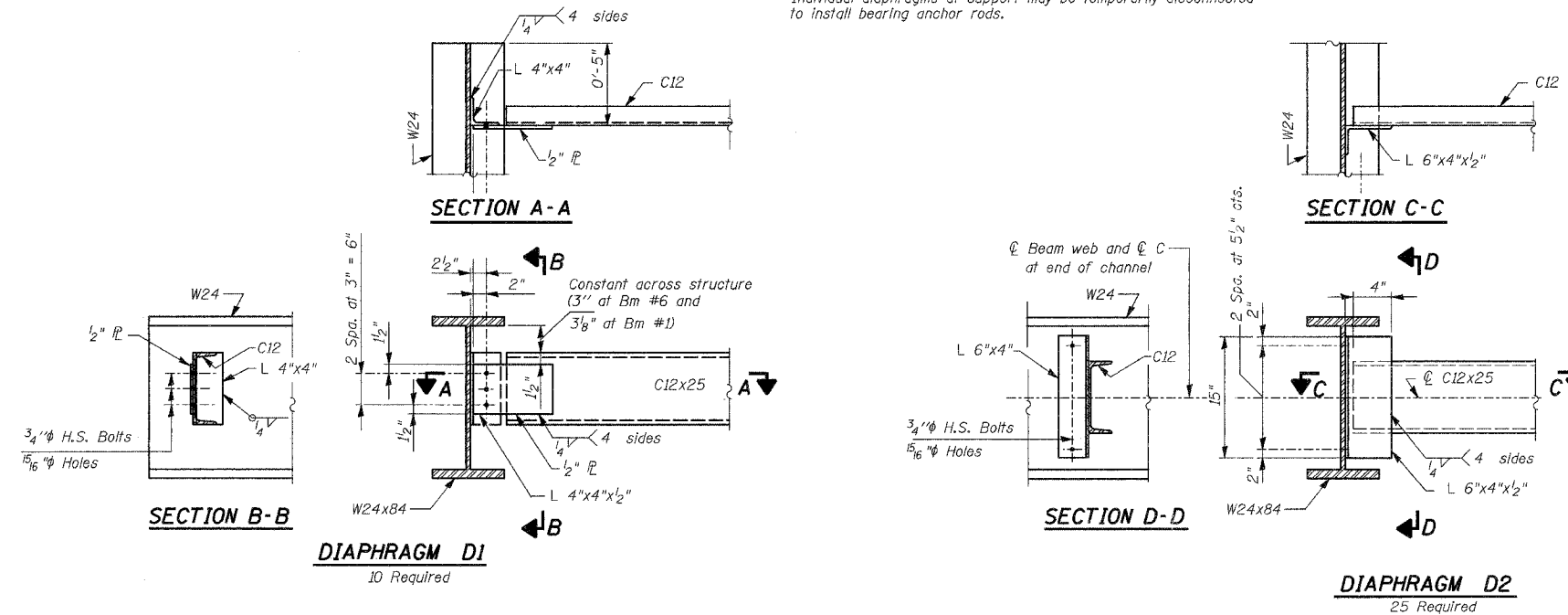
PLAN

Note:
All diaphragms shall be installed as steel is erected and secured with erection pins and bolts, except as otherwise noted. Individual diaphragms at support may be temporarily disconnected to install bearing anchor rods.



SPLICE
(6 Required)

NTR = Notch toughness requirement



CONNECTION DETAILS FOR
DIAPHRAGMS TO BEAMS

Note: Two hardened washers required for each set of oversized holes.

DESIGNED	NDS/GMK
CHECKED	MTP/SMK/GBC
DRAWN	NDS/GMK
CHECKED	SMK/GBC

FOR
INFORMATION
ONLY

NOTES:

1. Install shear stud connectors in positive moment regions of the entire superstructure, as shown on sht. S8.
2. For cleaning and painting see general notes on sht. S2.
3. HS Bolts shall be AASHTO M164/ASTM A325.
4. Load carrying components designated "NTR" shall conform to the supplemental requirements for Notch toughness, Zone 2.

ILLINOIS DEPARTMENT OF TRANSPORTATION
FRAMING PLAN AND STRUCTURAL
STEEL DETAILS

FAP 846
SB IL. ROUTE 53 OVER PRAIRIE CREEK
STATION 1305+00 SECTION 4B-1-R
WILL COUNTY

STRUCTURE NO. 099-0242

SCALE: NONE
DATE: AUGUST 2007

AEI DELTA ENGINEERING INC.
CONSULTING ENGINEERS, CHICAGO, ILLINOIS