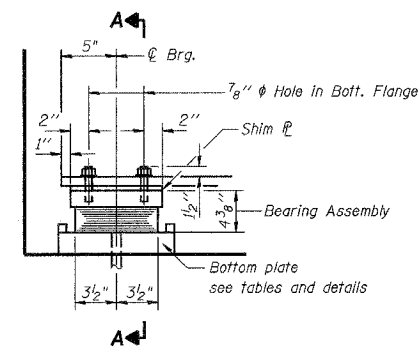


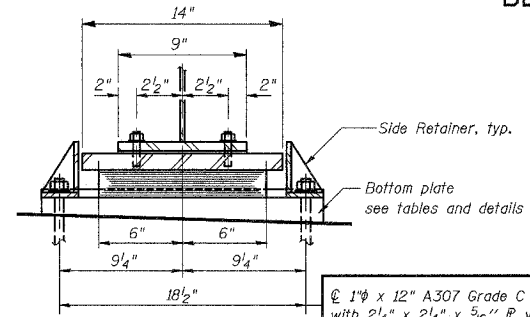
STATE OF ILLINOIS
DEPARTMENT OF TRANSPORTATION

ROUTE NO.	SECTION	COUNTY	TOTAL SHEETS	SHEET NO.	SHEET NO. 59
F. A. P. 846	4B-1-R	WILL.	39	31	
FED. ROAD DIST. NO. 7		ILLINOIS	FED. AID PROJECT-		SHEETS 517

CONTRACT NO. 60D26

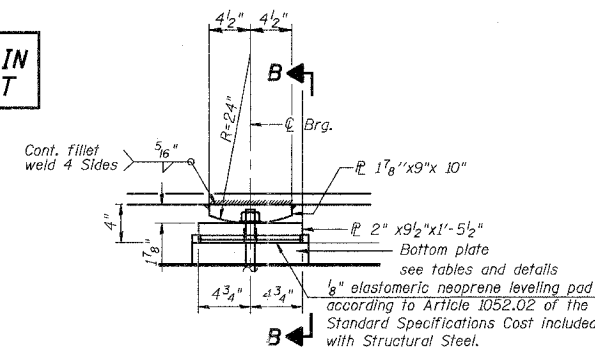


ELEVATION AT ABUT.

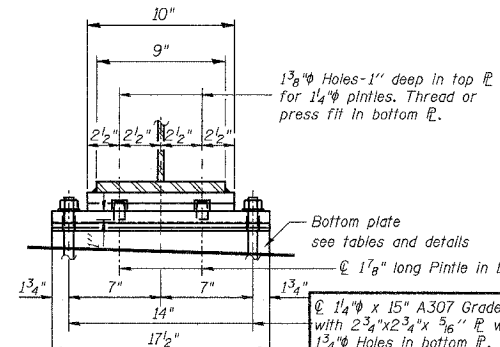


SECTION A-A

NOT INCLUDED IN THIS CONTRACT

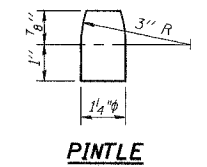


ELEVATION AT PIER #1



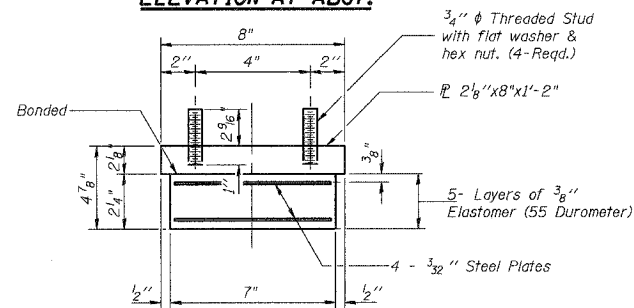
SECTION B-B

NOT INCLUDED IN THIS CONTRACT

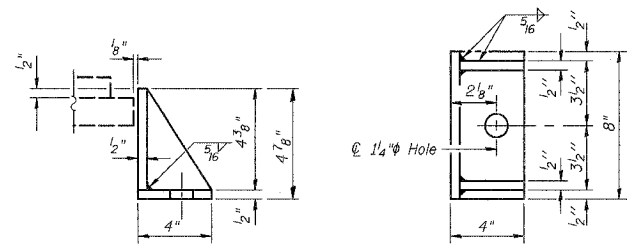


PINTLE

FIXED BEARING • PIER #1
(6 Req'd)



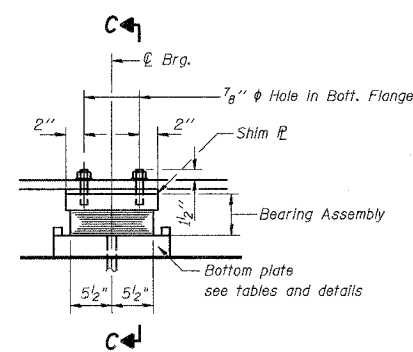
BEARING ASSEMBLY



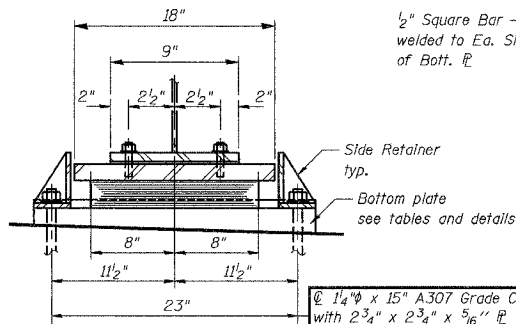
SIDE RETAINER

Equivalent rolled angle with stiffeners will be allowed in lieu of welded plates. Weight Included with Structural Steel.

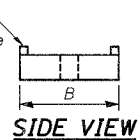
TYPE I ELASTOMERIC EXP. BRG. • ABUTMENTS
(12 Req'd)



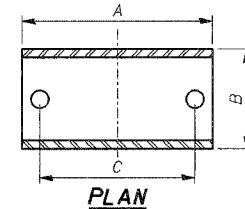
ELEVATION AT PIER #2



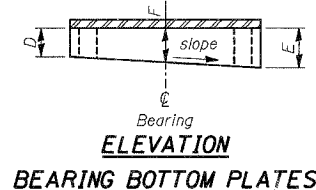
SECTION C-C



SIDE VIEW

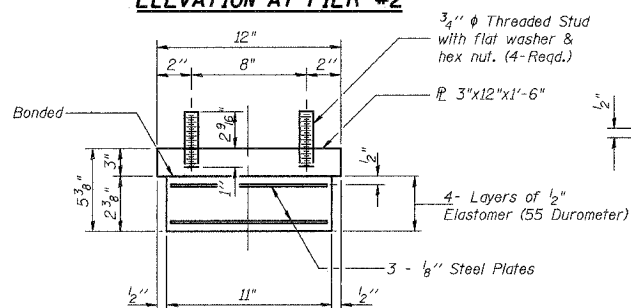


PLAN

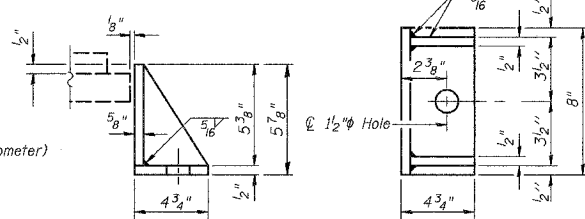


ELEVATION BEARING BOTTOM PLATES

NOT INCLUDED IN THIS CONTRACT



BEARING ASSEMBLY



SIDE RETAINER

Equivalent rolled angle with stiffeners will be allowed in lieu of welded plates. Weight Included with Structural Steel.

TYPE I ELASTOMERIC EXP. BRG. • PIER #2
(6 Req'd)

Notes:
Anchor bolts shall be ASTM F1554 all-thread (or an Engineer-approved alternate material) of the grade(s) and diameter(s) specified. ASTM A307 Grade C anchor bolts may be used in lieu of ASTM F1554 Grade 36 (Fy=36ksi). The corresponding specified grade of AASHTO M314 anchor bolts may be used in lieu of ASTM F1554.

Anchor bolts of fixed bearings may be either cast in place or installed in holes drilled after the supported member is in place.

Anchor bolts for side retainers may be cast in place or installed in holes drilled before or after members are in place.

Drilled and set anchor bolts shall be installed according to Article 521.06 of the Standard Specifications.

Side retainers and other steel members required for the bearing assembly shall be included in the cost of Elastomeric Bearing Assembly, Type I.

The structural steel plates of the Bearing Assembly shall conform to the requirements of AASHTO M 270 Grade 36.

Two 1/8 in. adjusting shims shall be provided for each bearing in addition to all other plates or shims and placed as shown on bearing details.

Notes: Anchor bolts at fixed bearings may be built into the masonry.

Bottom Plate • South Abutment (Exp.)

Beam No.	A	B	C	D	E	F
1	22 1/4	9	18 1/2	1 5/16	1 3/4	1 9/16
2	22 1/4	9	18 1/2	1 1/4	1 3/4	1 1/2
3	22 1/4	9	18 1/2	1 1/16	1 3/4	1 5/8
4	22 1/4	9	18 1/2	1 5/16	1 5/8	1 1/2
5	22 1/4	9	18 1/2	1 5/16	1 1/16	1 1/2
6	22 1/4	9	18 1/2	1 1/4	1 1/16	1 1/16

Bottom Plate • North Abutment (Exp.)

Beam No.	A	B	C	D	E	F
1	22 1/4	9	18 1/2	1 1/8	9/16	3/8
2	22 1/4	9	18 1/2	1/16	9/16	5/16
3	22 1/4	9	18 1/2	1/4	9/16	1/16
4	22 1/4	9	18 1/2	9/16	1/16	5/16
5	22 1/4	9	18 1/2	1/8	1/2	5/16
6	22 1/4	9	18 1/2	1/16	1/2	5/16

Bottom Plate • Pier #1 (Fix.)

Beam No.	A	B	C	D	E	F
1	17 1/2	11 1/2	14	2	2 5/16	2 3/16
2	17 1/2	11 1/2	14	2	2 3/8	2 3/16
3	17 1/2	11 1/2	14	2 3/16	2 7/16	2 5/16
4	17 1/2	11 1/2	14	2 1/16	2 3/16	2 3/16
5	17 1/2	11 1/2	14	2 1/16	2 3/16	2 3/16
6	17 1/2	11 1/2	14	1 5/16	2 3/16	2 3/16

Bottom Plate • Pier #2 (Exp.)

Beam No.	A	B	C	D	E	F	Grinding Req'd
1	27 3/4	13	23	0	9/16	5/16	* 3/16
2	27 3/4	13	23	0	9/16	5/16	* 3/16
3	27 3/4	13	23	1/16	7/16	1/4	* 1/8
4	27 3/4	13	23	0	7/16	1/4	* 1/8
5	27 3/4	13	23	0	7/16	3/16	* 1/16
6	27 3/4	13	23	0	9/16	5/16	* 1/4

* Existing top surface of Pier # 2 need to be ground under proposed bottom plate to the thickness shown.

BILL OF MATERIAL

Item	Unit	Total
Furnishing Elastomeric Bearing Assembly Type I	Each	18
Anchor bolts 1\"/>		

NOT INCLUDED IN THIS CONTRACT

DESIGNED	NDS/GMK
CHECKED	MTP/SWK/GBC
DRAWN	NDS/GMK
CHECKED	SMK/GBC

ILLINOIS DEPARTMENT OF TRANSPORTATION

BEARING DETAILS

FAP 846
SB IL. ROUTE 53 OVER PRAIRIE CREEK
STATION 1305+00 SECTION 4B-1-R
WILL COUNTY

STRUCTURE NO. 099-0242

SCALE: NONE
DATE: AUGUST 2007

DELTA ENGINEERING INC.
CONSULTING ENGINEERS, CHICAGO, ILLINOIS.