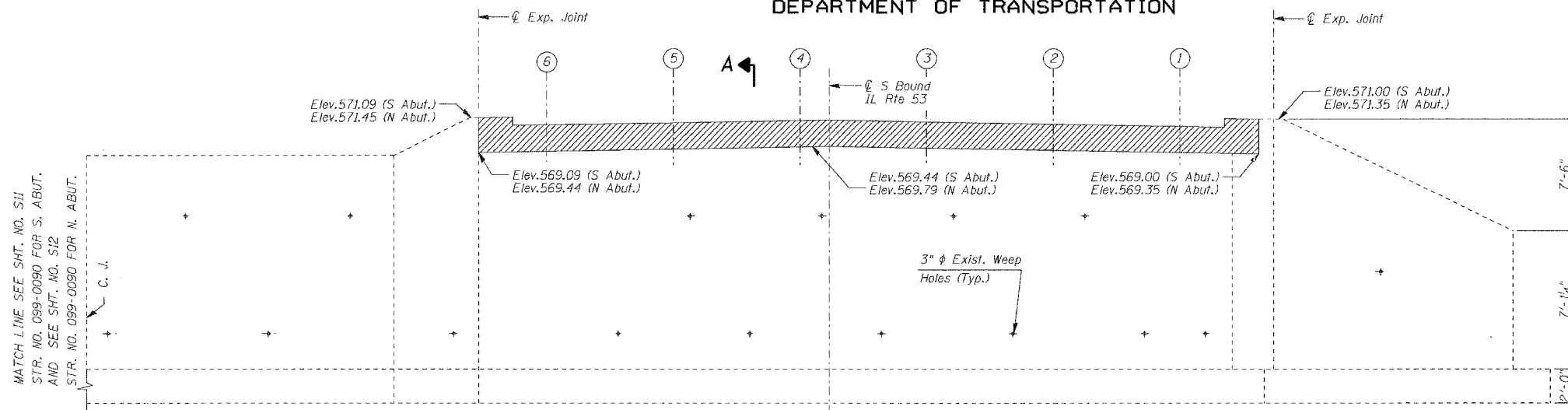


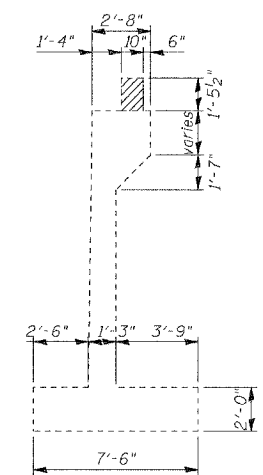
STATE OF ILLINOIS  
DEPARTMENT OF TRANSPORTATION

ROUTE NO.	SECTION	COUNTY	SHEETS	SHEET NO.	SHEET NO. S18 : SHEETS S17
F. A. P. 846	4B-1-R	WILL	39	32	
FED. ROAD DIST. NO. 7	ILLINOIS	FED. AID PROJECT			

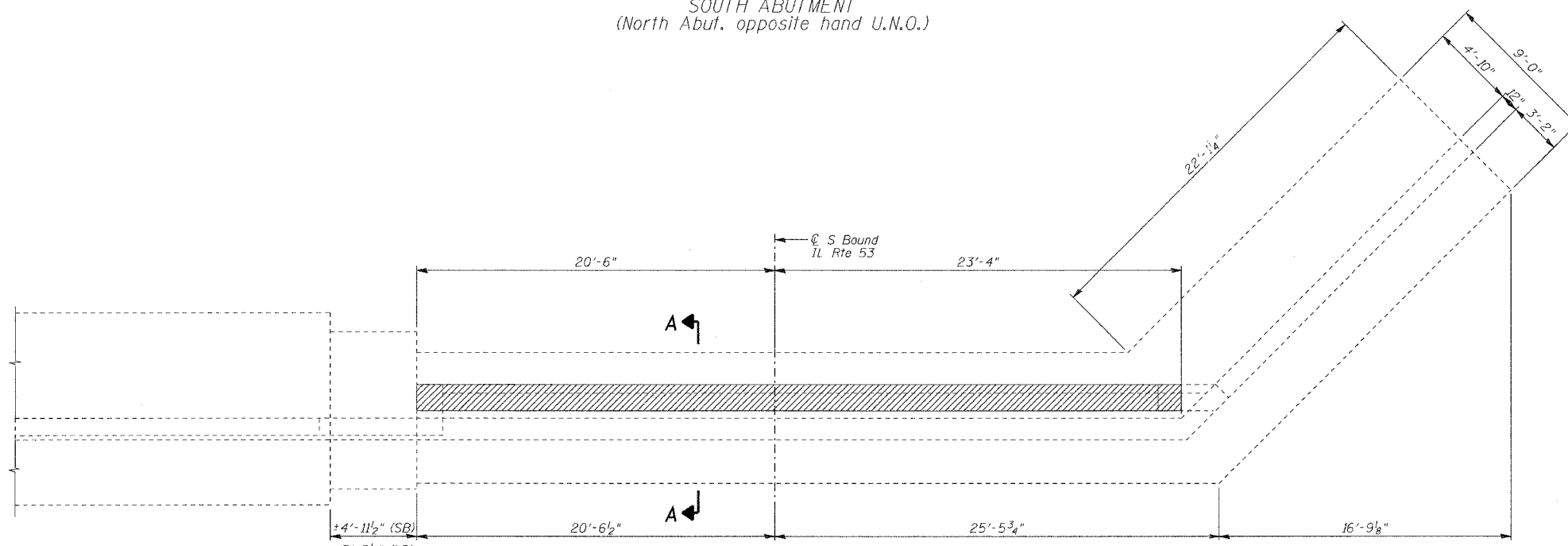
CONTRACT NO. 60D26



**ELEVATION**  
SOUTH ABUTMENT  
(North Abut. opposite hand U.N.O.)



**SECTION A-A**

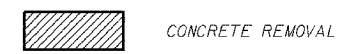


**PLAN**  
SOUTH ABUTMENT  
(North Abut. opposite hand U.N.O.)

**NOTES:**

- Concrete removal shall be accomplished by methods that will not damage the existing Abutments and Piers.
- Any reinforcement bars that are damaged during concrete removal operations shall be repaired or replaced using an approved bar splicer or anchorage system. Cost included in the pay item for Concrete Removal.

**LEGEND:**



**BILL OF MATERIAL**

PAY ITEM	UNIT	S. ABUT.	N. ABUT.	TOTAL
CONCRETE REMOVAL	Cu yd	2.5	2.5	5.0

**THIS SHEET IS FOR INFORMATION ONLY**

DESIGNED	NDS/GMK
CHECKED	MTP/SMK/GBC
DRAWN	NDS/GMK
CHECKED	SMK/GBC

ILLINOIS DEPARTMENT OF TRANSPORTATION  
**CONCRETE REMOVAL DETAILS**  
 FAP 846  
 SB IL. ROUTE 53 OVER PRAIRIE CREEK  
 STATION 1305+00 SECTION 4B-1-R  
 WILL COUNTY  
 STRUCTURE NO. 099-0242  
 SCALE: NONE  
 DATE: JUNE 2007  
 DELTA ENGINEERING INC.  
 CONSULTING ENGINEERS, CHICAGO, ILLINOIS