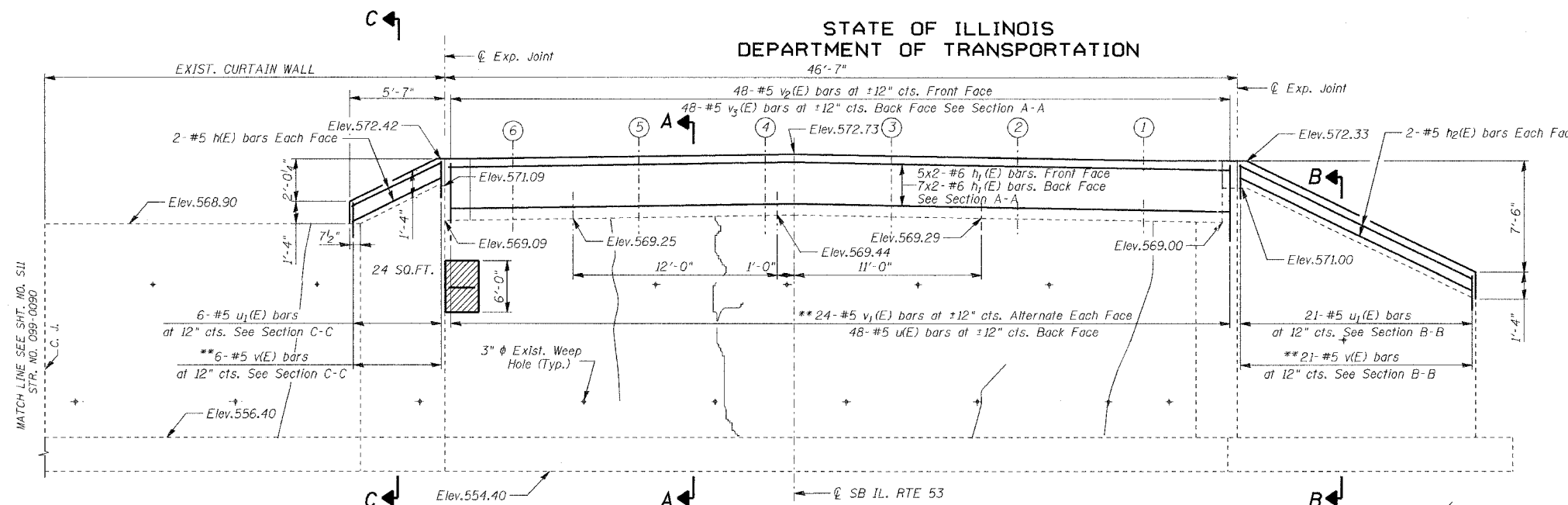


STATE OF ILLINOIS  
DEPARTMENT OF TRANSPORTATION

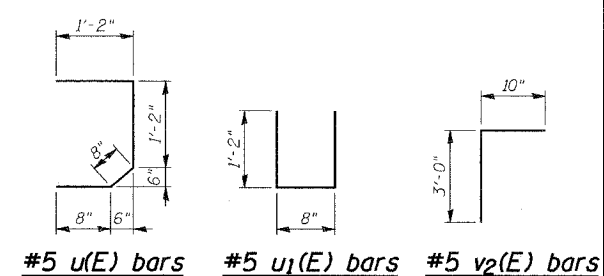
ROUTE NO.	SECTION	COUNTY	SHEET NO.	SHEET	SHEET NO. S11
F. A. P. 846	4B-1-R	WILL	39	33	SHEETS S17
FED. ROAD DIST. NO. 7	ILLINOIS	FED. AID PROJECT-			

CONTRACT NO. 60D26



**ELEVATION**  
(Looking South)

\*\* Drill and grout #5 v(E) and #5 v1(E) bars in 7/8" dia. x 12" min. drilled holes according to Article 584 of the Standard Specifications.



**BILL OF MATERIAL**

Bar	No.	Size	Length	Shape	
h(E)	4	#5	5'-9"	—	
h1(E)	24	#6	24'-6"	—	
h2(E)	4	#5	20'-10"	—	
v(E)	31	#5	2'-5"	—	
v1(E)	48	#5	4'-2"	—	
v2(E)	48	#5	3'-10"	—	
v3(E)	48	#5	2'-8"	—	
u(E)	48	#5	3'-8"	J	
u1(E)	27	#5	3'-0"	U	
Reinforcement Bars, Epoxy Coated				Pound	1,920.0
Concrete Structures				Cu yd	9.0
Structural Repair of Concrete (Depth greater than 5")				Sq ft	24.0

**MINIMUM BAR LAP**

#5 bar = 2'-2"  
#6 bar = 2'-7"

**MINIMUM EMBEDMENT**

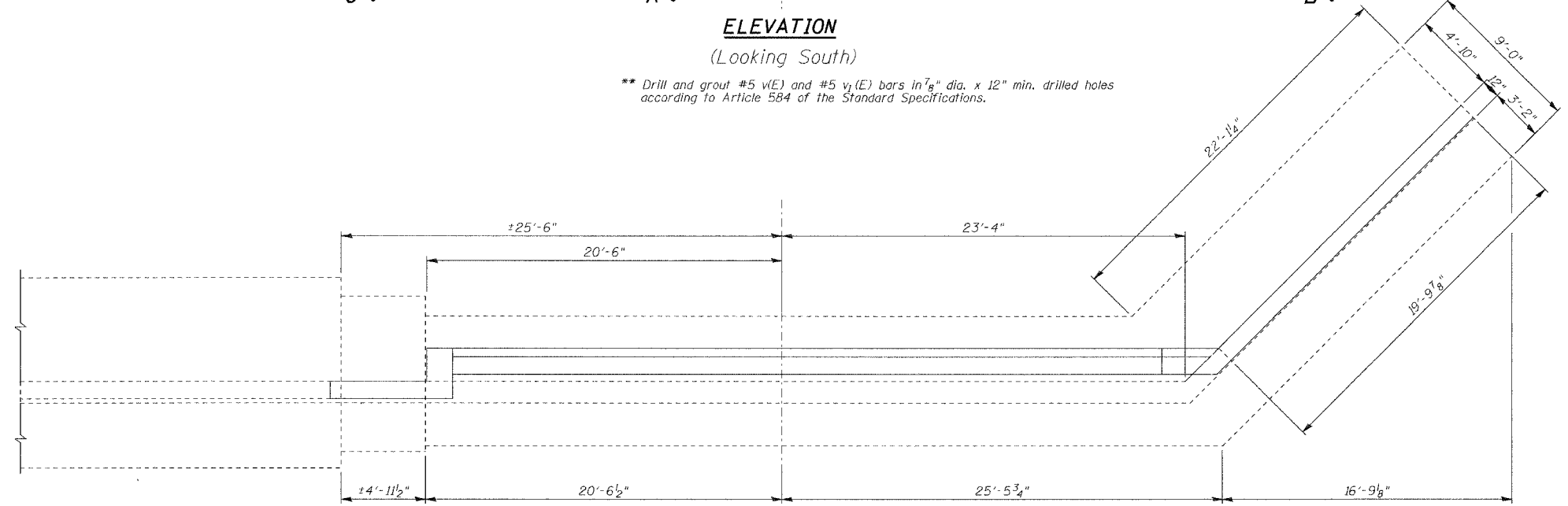
#5 bar = 12"

**LEGEND:**

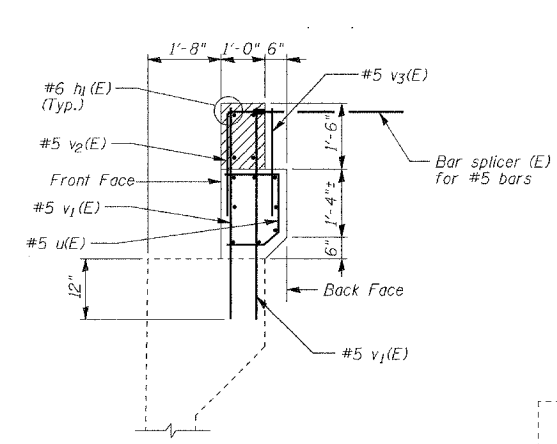
- HAIRLINE CRACK (CRACK < 1/16" WIDE) NOT TO BE SEALED
- SPALL WITH EXPOSED REBAR  
Structural Repair of Concrete (Depth greater than 5")

**NOTES:**

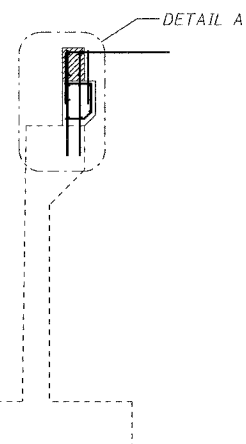
- Concrete removal shall be accomplished by methods that will not damage the existing Abutments and Piers.
- Any reinforcement bars that are damaged during concrete removal operations shall be repaired or replaced using an approved bar splicer or anchorage system. Cost included in the pay item for Concrete Removal.



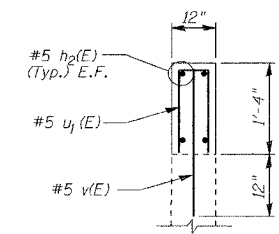
**PLAN**



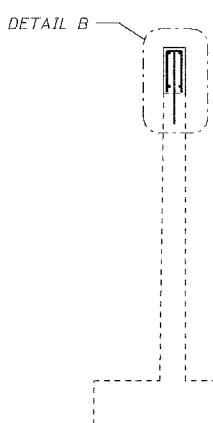
**DETAIL A**



**SECTION A-A**

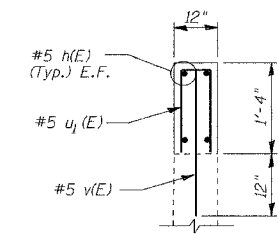


**DETAIL B**

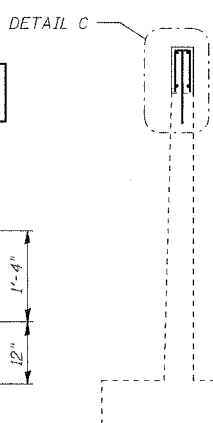


**SECTION B-B**

**THIS SHEET IS FOR INFORMATION ONLY**



**DETAIL C**



**SECTION C-C**

DESIGNED	NDS/GMK
CHECKED	MTP/SMK/GBC
DRAWN	NDS/GMK
CHECKED	SMK/GBC

ILLINOIS DEPARTMENT OF TRANSPORTATION  
**SOUTH ABUTMENT REPAIRS & EXTENSION**  
FAP 846  
SB IL. ROUTE 53 OVER PRAIRIE CREEK STATION 1305+00 SECTION 4B-1-R  
WILL COUNTY  
STRUCTURE NO. 099-0242  
SCALE: NONE  
DATE: JUNE 2007  
DELTA ENGINEERING INC.  
CONSULTING ENGINEERS, CHICAGO, ILLINOIS.