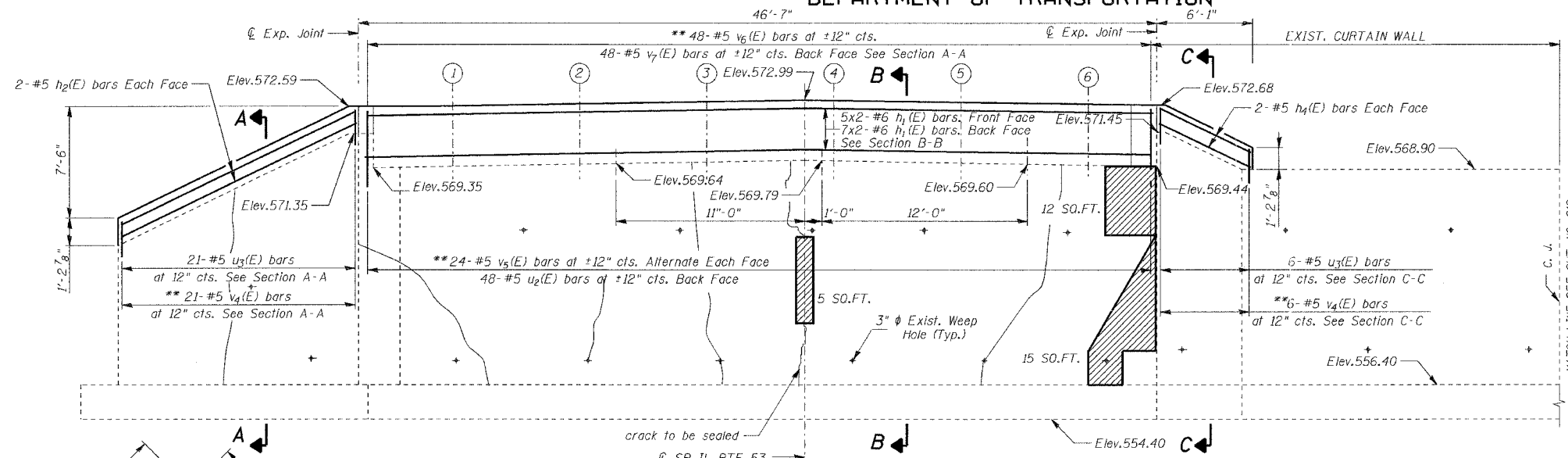


STATE OF ILLINOIS
DEPARTMENT OF TRANSPORTATION

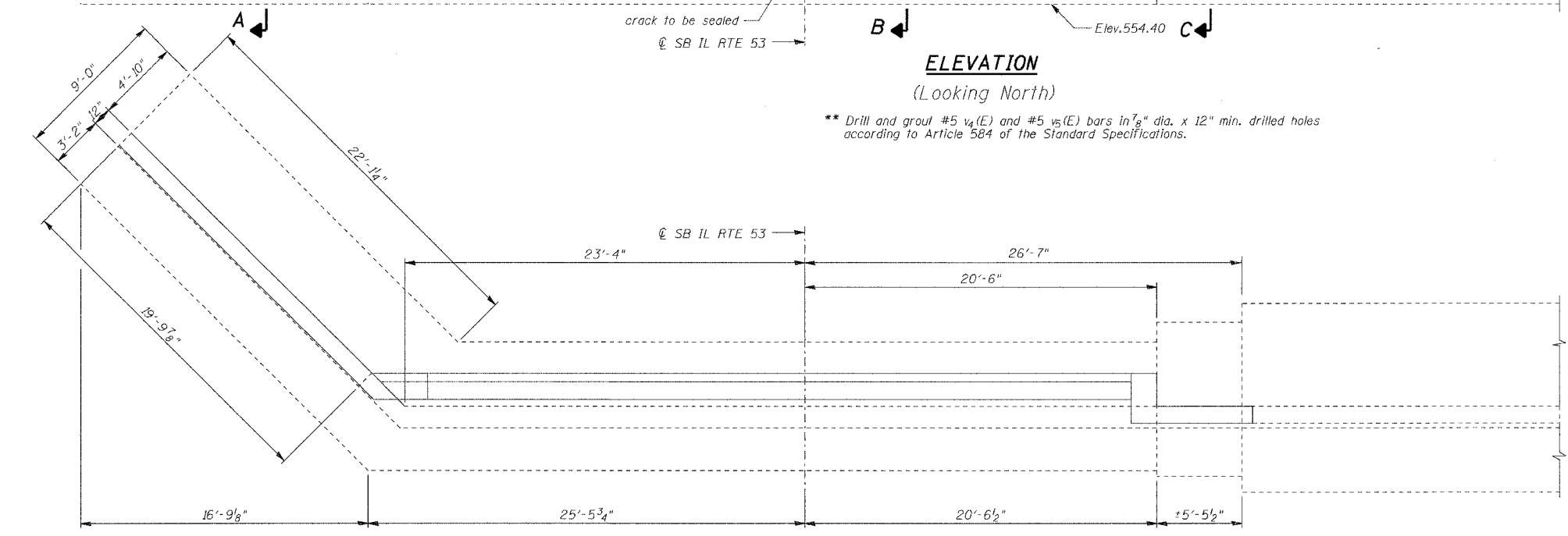
ROUTE NO.	SECTION	COUNTY	SHEET NO.	SHEET NO.
F. A. R.	4B-1-R	WILL	39	34
FED. ROAD DIST. NO. 7	ILLINOIS	FED. AID PROJECT-		

CONTRACT NO. 60D26

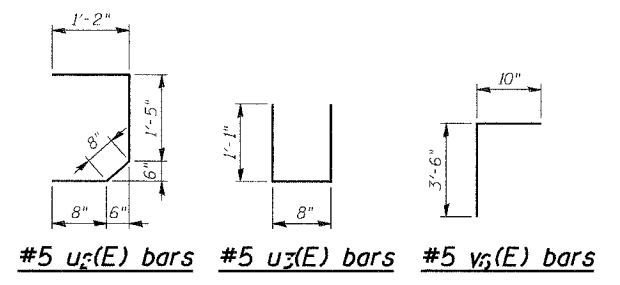
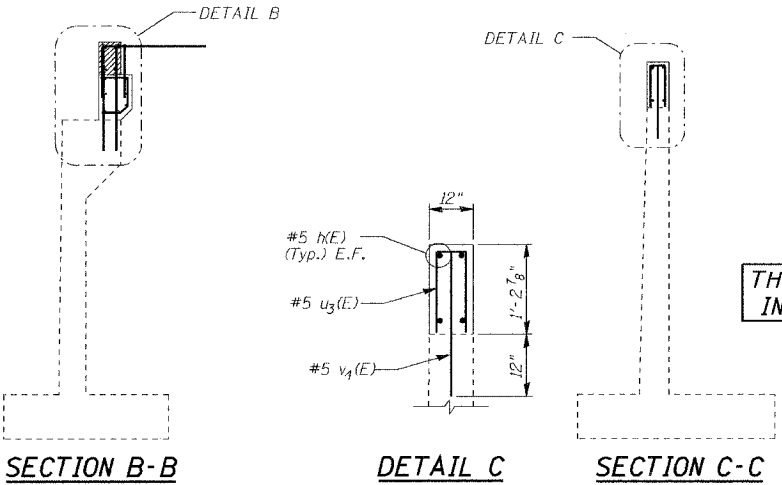
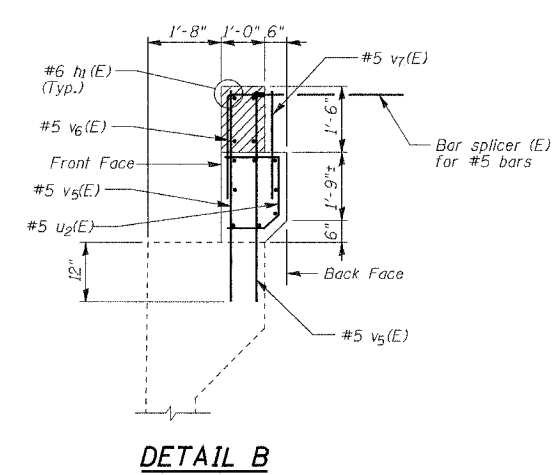
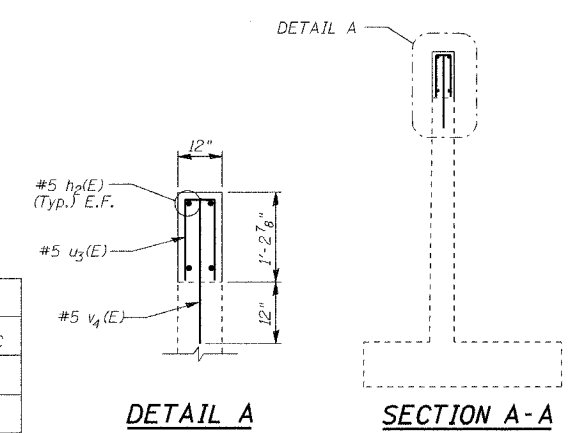


ELEVATION
(Looking North)

** Drill and grout #5 v4(E) and #5 v5(E) bars in 7/8" dia. x 12" min. drilled holes according to Article 584 of the Standard Specifications.



PLAN



BILL OF MATERIAL

Bar	No.	Size	Length	Shape	
h1(E)	24	#6	24'-6"	—	
h2(E)	4	#5	20'-10"	—	
h4(E)	4	#5	6'-3"	—	
v4(E)	27	#5	2'-1"	—	
v5(E)	48	#5	4'-7"	—	
v6(E)	48	#5	4'-4"	—	
v7(E)	48	#5	3'-1"	—	
u2(E)	48	#5	3'-11"	—	
u3(E)	27	#5	2'-10"	—	
Reinforcement Bars, Epoxy Coated				Pound	1,980.0
Concrete Structures				Cu yd	10.3
Epoxy Crack Injection				Foot	15.0
Structural Repair of Concrete (Depth greater than 5")				Sq ft	32.0

MINIMUM BAR LAP

#5 bar = 2'-2"
#6 bar = 2'-7"

MINIMUM EMBEDMENT

#5 bar = 12"

LEGEND:

HAIRLINE CRACK (CRACK < 1/16" WIDE)
NOT TO BE SEALED UNLESS NOTED OTHERWISE

STRUCTURAL REPAIR OF CONCRETE
(DEPTH GREATER THAN 5 INCHES)

NOTES:

- Concrete removal shall be accomplished by methods that will not damage the existing Abutments and Piers.
- Any reinforcement bars that are damaged during concrete removal operations shall be repaired or replaced using an approved bar splicer or anchorage system. Cost included in the pay item for Concrete Removal.

DESIGNED	NDS/GMK
CHECKED	MTP/SMK/GBC
DRAWN	NDS/GMK
CHECKED	SMK/GBC

THIS SHEET IS FOR
INFORMATION ONLY

ILLINOIS DEPARTMENT OF TRANSPORTATION
**NORTH ABUTMENT
REPAIRS & EXTENSION**
FAP 846
SB IL. ROUTE 53 OVER PRAIRIE CREEK
STATION 1305+00 SECTION 4B-1-R
WILL COUNTY
STRUCTURE NO. 099-0242
SCALE: NONE
DATE: JUNE 2007
DEI DELTA ENGINEERING INC.
CONSULTING ENGINEERS, CHICAGO, ILLINOIS