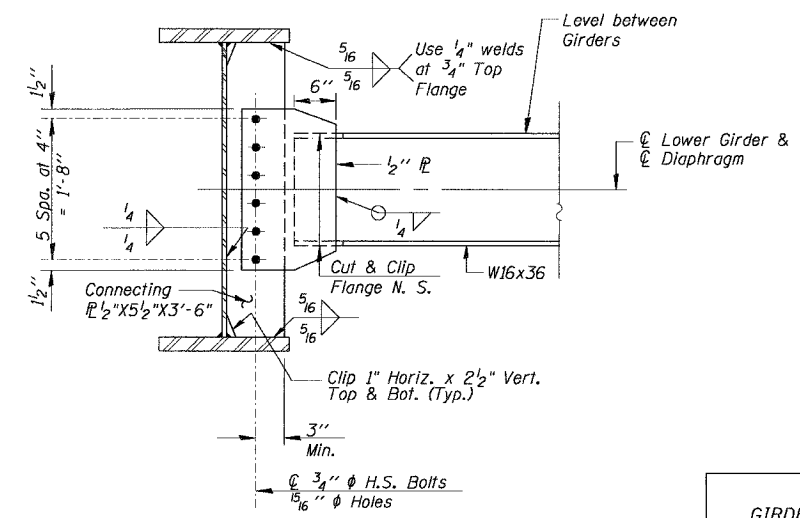
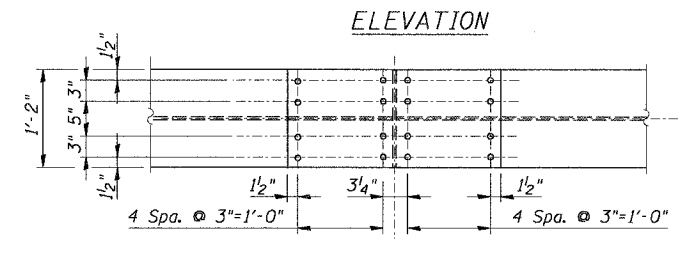
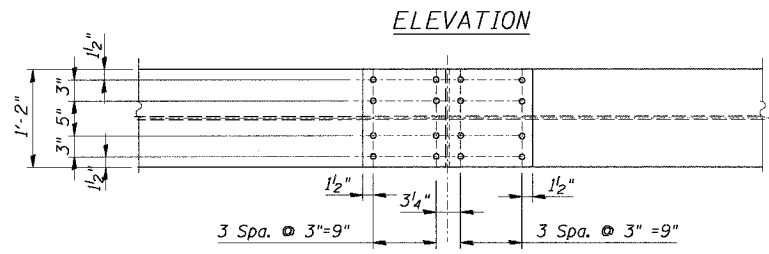
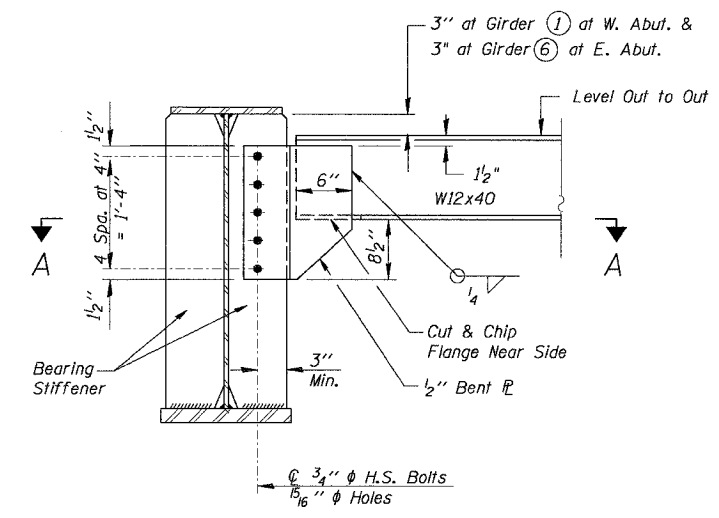
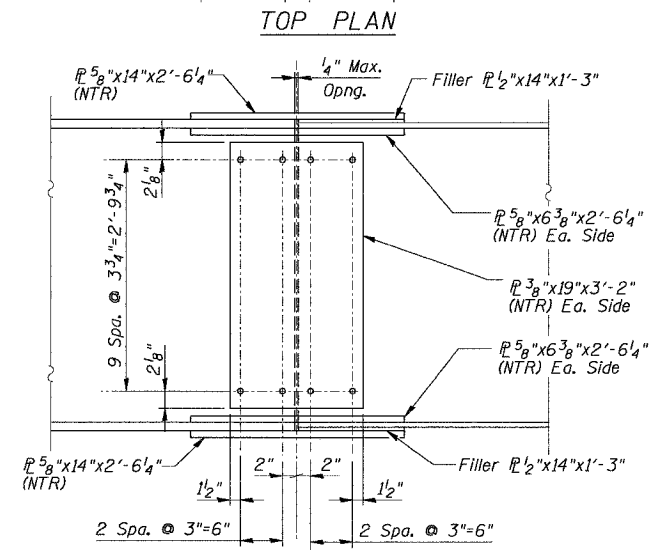
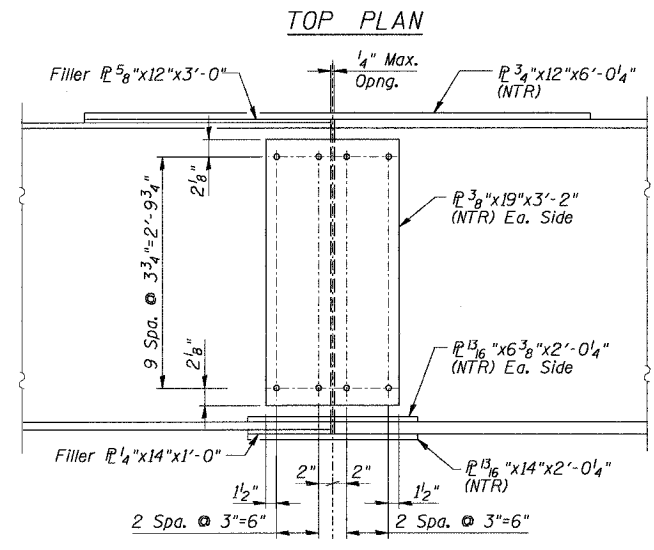
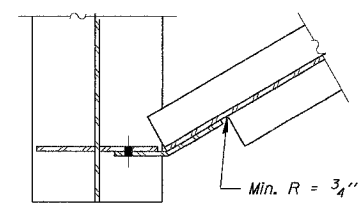
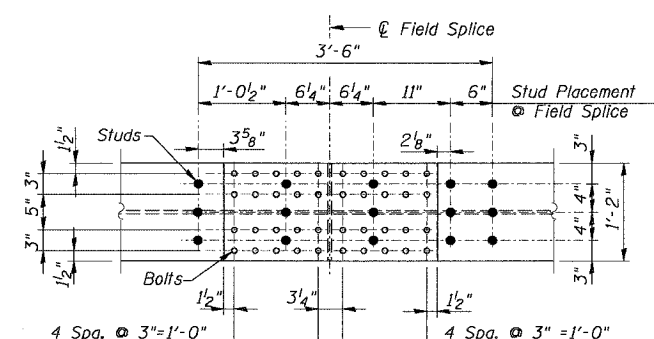
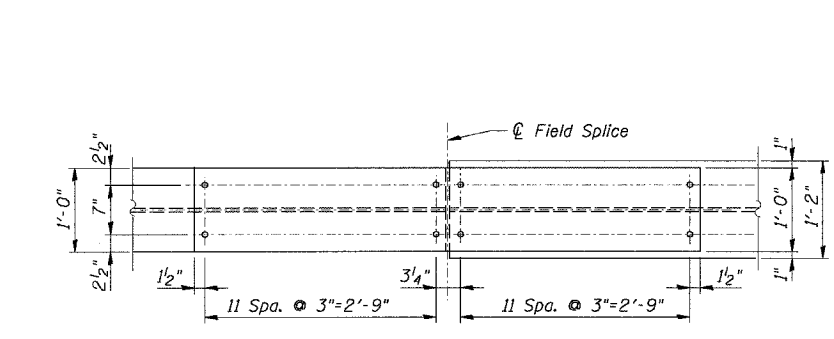


ROUTE NO.	SECTION	COUNTY	TOTAL SHEETS	SHEET
533	11 R-1-1-1	McHenry	19	12
FED. HIGH. DIST. AKN.		ILLINOIS	FED. AID PROJECT	

SHEET NO. 10 OF 17 SHEETS

Contract #60D29



FIELD SPLICE #1
FIELD SPLICE #4 (OPP. HAND)

FIELD SPLICE #2
FIELD SPLICE #3 (OPP. HAND)

- Notes:
- Two hardened washers shall be required over all oversized holes.
 - All Structural Steel on this Sheet shall be AASHTO M270 Grade 50 except diaphragms and diaphragm connecting plates which shall be AASHTO M270 Grade 36.
 - NTR denotes steel subject to supplemental requirements for Notch Toughness (Zone 2)
 - Stud Shear Connectors not included in this Contract.

DESIGNED	S.S.T.
CHECKED	S.D.H.
DRAWN	E.B.
CHECKED	S.S.T.

GIRDER AND FRAMING DETAILS
IL Route 176 over South Branch of the Kishwaukee River
F.A.P. RTE 533, SECTION 11 R-1-1-1
McHENRY COUNTY
STATION 51+50.00
DATE: 06-29-07 S.N. 056-0071
GRAEF, ANHALT, SCHLOEMER & ASSOCIATES INC
CHICAGO ILLINOIS

N:\Jobs\2006\10\176\South Branch Steel\176-Steel.dgn
 6/29/2007 3:08:35 PM