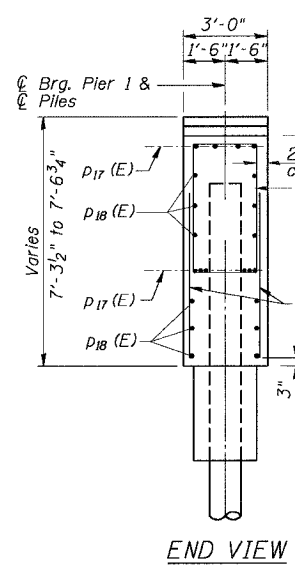
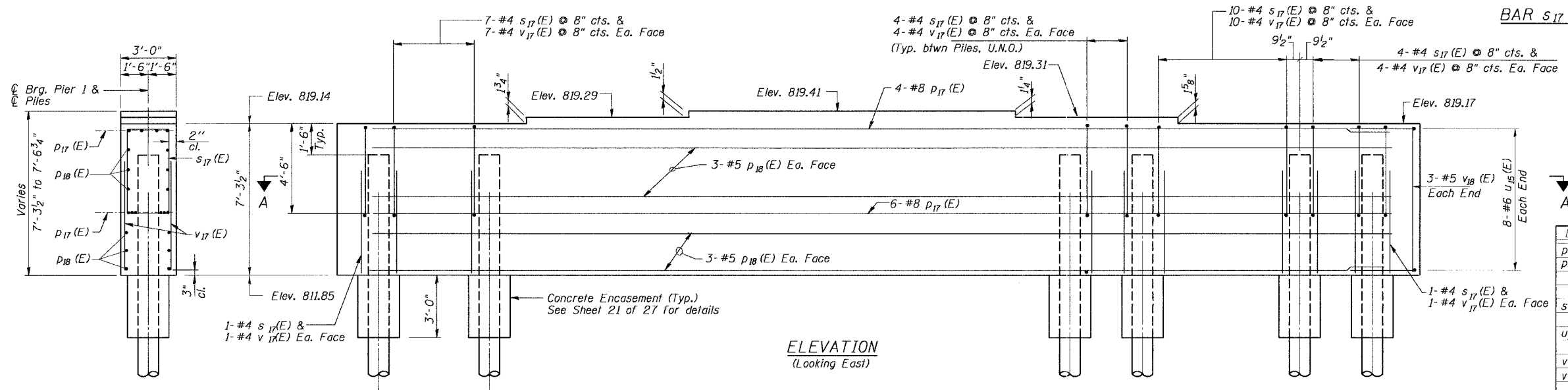
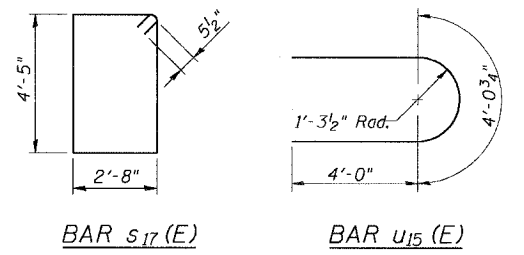
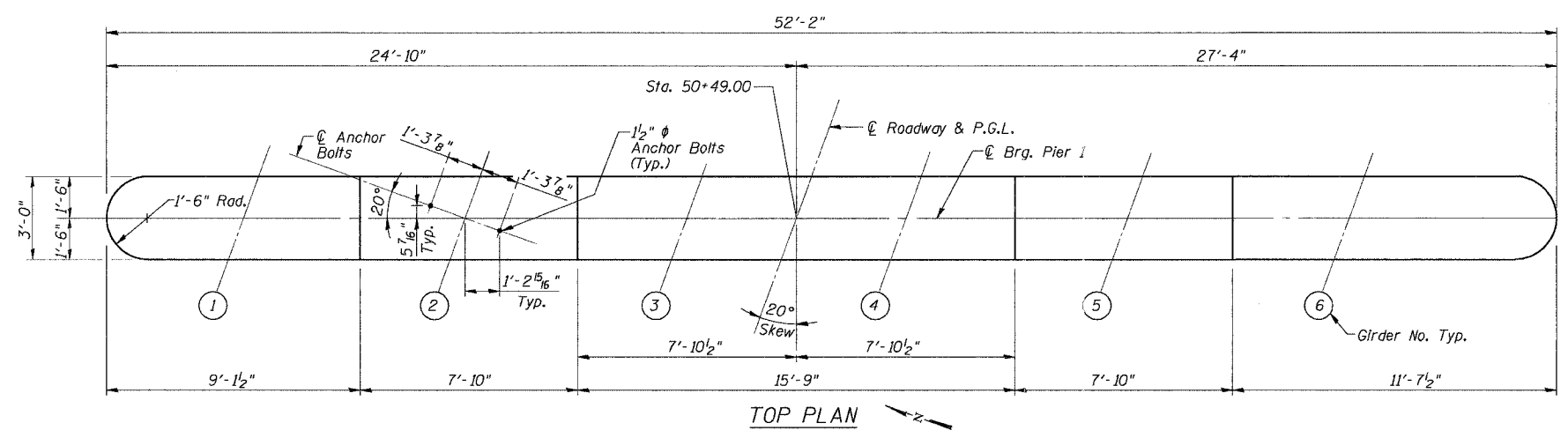


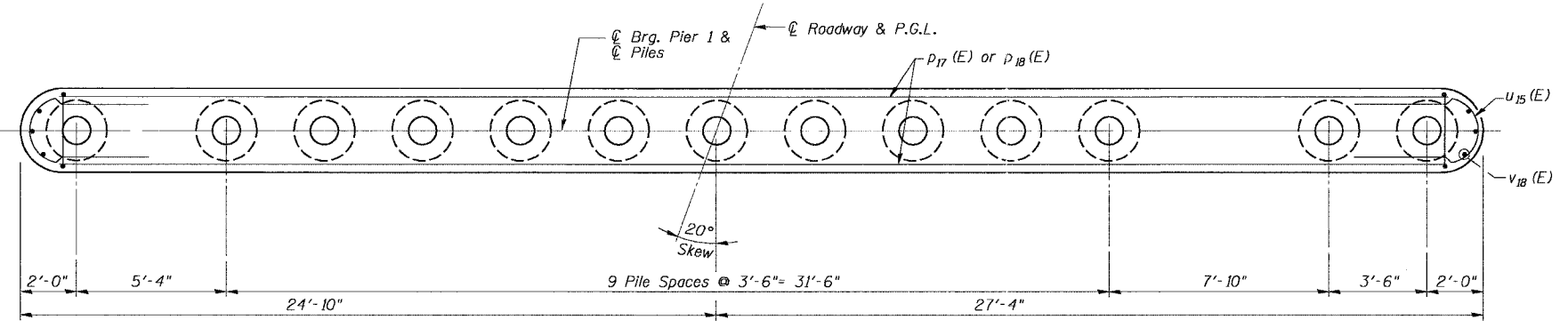
ROUTE NO.	SECTION	COUNTY	TOTAL SHEETS	SHEET
533	11 R-1-1-1	McHenry	19	17
FED. ROAD DIST. NO.		SUBURBS	FED. AID PROJECT	
Contract #60D29				

SHEET NO. 15 OF 17 SHEETS



PILE DATA

Type: 14" Metal Shell Pile
 Capacity: 65 Tons/Pile
 Est. Length: 43 Ft.
 No. Req'd: 12 + 1 Test Pile



SECTION A-A
PIER 1

BILL OF MATERIAL

Bar	No.	Size	Length	Shape
p17(E)	10	#8	49'-0"	—
p18(E)	12	#5	49'-0"	—
s17(E)	59	#4	15'-1"	D
u15(E)	16	#6	12'-1"	U
v17(E)	118	#4	4'-3"	—
v18(E)	6	#5	6'-10"	—
Structure Excavation		Cu. Yd.	122	
Concrete Structures		Cu. Yd.	42.3	
Concrete Encasement		Cu. Yd.	4.2	
Reinforcement Bars, Epoxy Coated		Pound	3,180	
Furnishing Metal Shell Piles 14"		Foot	516	
Driving Piles		Foot	516	
Test Pile Metal Shells		Each	1	
Underwater Structure Excavation Protection Location 1		Each	1	

Reinforcement Bars designated (E) shall be epoxy coated.

FOR INFORMATION ONLY

PIER 1
 IL Route 176 over South Branch of the Kishwaukee River
 F.A.P. RTE 533, SECTION 11 R-1-1-1
 McHENRY COUNTY
 STATION 51+50.00
 DATE: 06-29-07 S.N. 056-0071
 GRAEF, ANHALT, SCHLOEMER & ASSOCIATES INC
 CHICAGO ILLINOIS

- Notes:
1. Space reinforcement in cap to miss anchor bolts.
 2. Pour steps monolithically with cap.
 3. Work this Sheet With Sheet 12 of 27

DESIGNED	S.S.T.
CHECKED	S.D.H.
DRAWN	E.B.
CHECKED	S.S.T.

N:\Jobs\2006\10101\South Branch Steel\176-Pier1.dgn
 6/29/07 3:02:38 PM