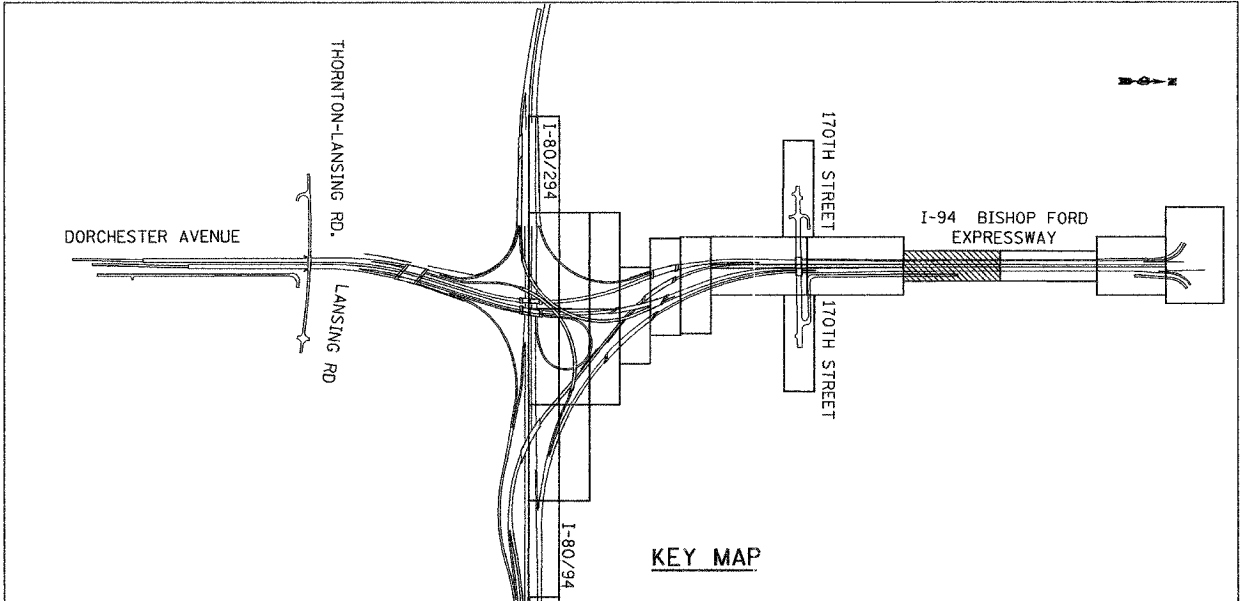
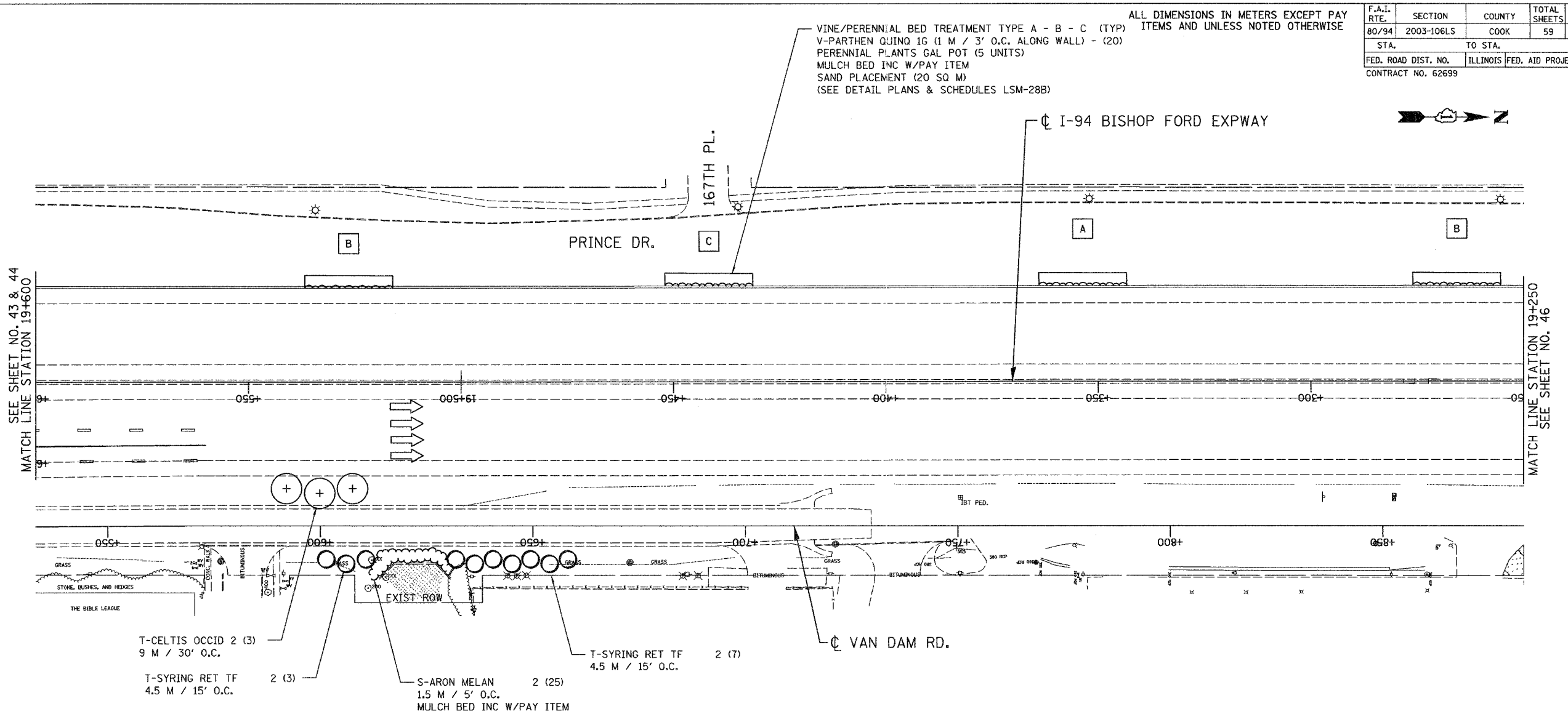


F.A.I. RTE.	SECTION	COUNTY	TOTAL SHEETS	SHEET NO.
80/94	2003-106LS	COOK	59	45
STA.		TO STA.		
FED. ROAD DIST. NO.		ILLINOIS FED. AID PROJECT		
CONTRACT NO. 62699				

ALL DIMENSIONS IN METERS EXCEPT PAY ITEMS AND UNLESS NOTED OTHERWISE

VINE/PERENNIAL BED TREATMENT TYPE A - B - C (TYP)
 V-PARTHEN QUINO 1G (1 M / 3' O.C. ALONG WALL) - (20)
 PERENNIAL PLANTS GAL POT (5 UNITS)
 MULCH BED INC W/PAY ITEM
 SAND PLACEMENT (20 SQ M)
 (SEE DETAIL PLANS & SCHEDULES LSM-28B)



LSNS - 35

ILLINOIS DEPARTMENT OF TRANSPORTATION
 I-80/94/US 6
 KINGERY-BORMAN EXPRESSWAY
 BURNHAM ROAD TO US 41
LANDSCAPING PLAN
I-94 BISHOP FORD EXPWAY

REVISIONS	
NAME	DATE

SCALE 1:500
 DATE 06/07

DRAWN BY ACE/CAD
 CHECKED BY TJW



06/26/07
 1:55:28 PM
 B:\Project\2010\801\CADD\Contract\LS\LS_35.rdb