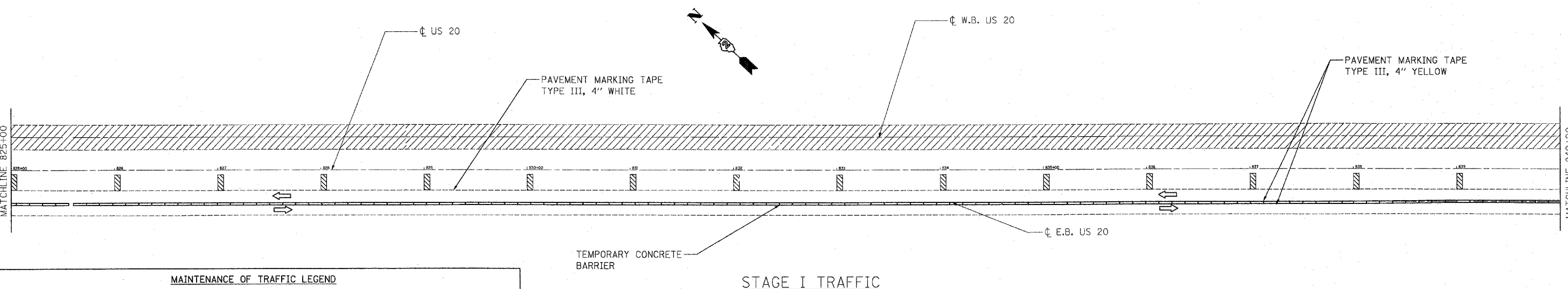
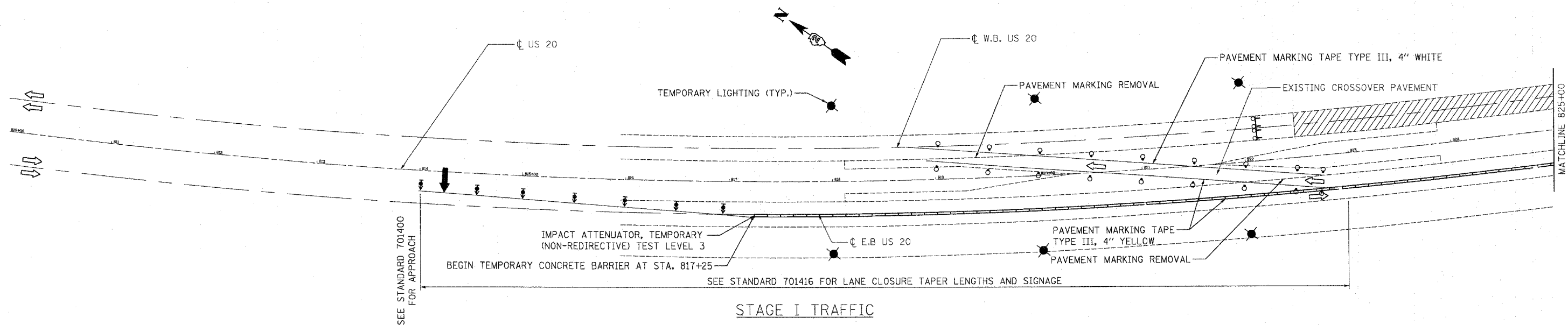


F.A.P. RTE.	SECTION	COUNTY	TOTAL SHEETS	SHEET NO.
301	(2HB-2, 2HB-1D)	WINNEBAGO	107	18
STA.		TO STA.		
FED. ROAD DIST. NO.		ILLINOIS FED. AID PROJECT		



MAINTENANCE OF TRAFFIC LEGEND

	TRAFFIC FLOW DIRECTION		PR TEMPORARY CONCRETE BARRIER
	ARROW BOARD		BARRICADE TYPE I OR TYPE II OR DRUM
	DRUM WITH STEADY BURNING MONODIRECTIONAL LIGHT		SIGN
	TYPE III BARRICADE WITH FLASHING LIGHT		TEMPORARY LIGHT POLE
	TYPE III BARRICADE		
	DIRECTION INDICATOR BARRICADE WITH STEADY BURN MONODIRECTIONAL LIGHT		
	VERTICAL PANEL		

NOTES

- SEE STANDARD 701416 FOR ADDITIONAL SIGNAGE, PAVEMENT MARKING, AND DIMENSIONS.
- SEE SECTIONS FOR LANE AND SHOULDER DIMENSIONS.
- ALL BARRICADES, DRUMS, AND VERTICAL PANELS SHALL BE AT 15 m (50 ft.) CENTERS. WHERE THE TANGENT DISTANCE "T" ON THE TEMPORARY RUNAROUND EXCEEDS 180 m (600 ft.) CLEAR DELINEATORS AT 15 m (50 ft.) CENTERS MAY BE SUBSTITUTE FOR THE VERTICAL PANELS, OR SPACING BETWEEN VERTICAL PANELS MAY BE INCREASED TO 30 m (100 ft.) WITHIN THE LIMITS OF THE TANGENT.
- SEE TEMPORARY ROADWAY LIGHTING DETAIL FOR MORE INFORMATION. THE COST FOR TEMPORARY LIGHTS WILL BE INCLUDED IN LUMP SUM COST FOR TEMPORARY LIGHTING SYSTEM.
- CONTRACTOR TO COORDINATE WITH COM ED ON PROPOSED LOCATION FOR TEMPORARY LIGHTING.

REVISIONS	
NAME	DATE

ILLINOIS DEPARTMENT OF TRANSPORTATION
 US 20 OVER
 PRAIRIE AND SIMPSON ROADS
**TRAFFIC CONTROL PLAN
 STAGE I**

SCALE: VERT. 1" = 50'
 HORIZ. 1" = 50'
 DATE 04/03/07

DRAWN BY AJP
 CHECKED BY SPF