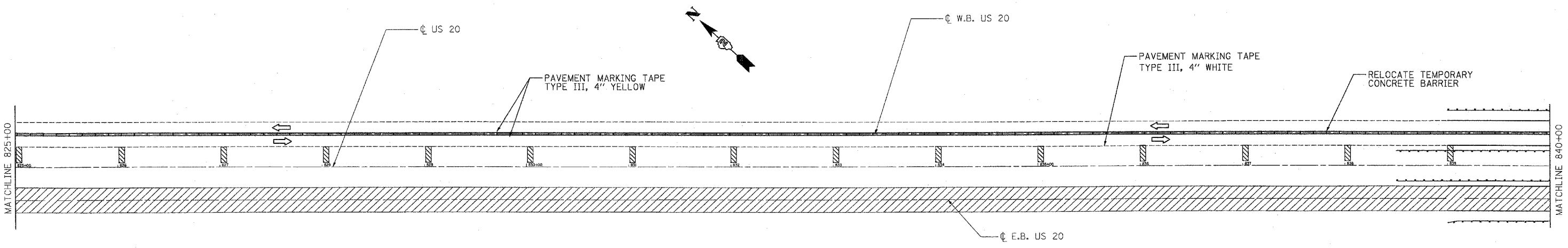
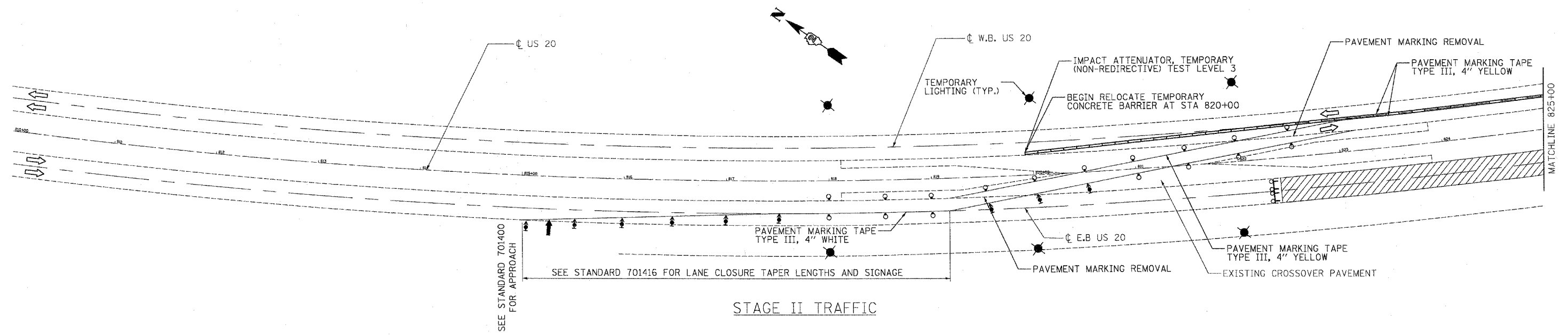


F.A.P. RTE.	SECTION	COUNTY	TOTAL SHEETS	SHEET NO.
301	(2HB-2, 2HB-1)D	WINNEBAGO	107	20
STA.		TO STA.		
FED. ROAD DIST. NO.	ILLINOIS	FED. AID PROJECT		



**MAINTENANCE OF TRAFFIC LEGEND**

	TRAFFIC FLOW DIRECTION		PR TEMPORARY CONCRETE BARRIER
	ARROW BOARD		BARRICADE TYPE I OR TYPE II OR DRUM
	DRUM WITH STEADY BURNING MONODIRECTIONAL LIGHT		SIGN
	TYPE III BARRICADE WITH FLASHING LIGHT		TEMPORARY LIGHT POLE
	TYPE III BARRICADE		
	DIRECTION INDICATOR BARRICADE WITH STEADY BURN MONODIRECTIONAL LIGHT		
	VERTICAL PANEL		

**STAGE II TRAFFIC**

**NOTES**

1. SEE STANDARD 701416 FOR ADDITIONAL SIGNAGE, PAVEMENT MARKING, AND DIMENSIONS.
2. SEE SECTIONS FOR LANE AND SHOULDER DIMENSIONS.
3. ALL BARRICADES, DRUMS, AND VERTICAL PANELS SHALL BE AT 15 m (50 ft.) CENTERS. WHERE THE TANGENT DISTANCE "T" ON THE TEMPORARY RUNAROUND EXCEEDS 180 m (600 ft.) CLEAR DELINEATORS AT 15 m (50 ft.) CENTERS MAY BE SUBSTITUTE FOR THE VERTICAL PANELS, OR SPACING BETWEEN VERTICAL PANELS MAY BE INCREASED TO 30 m (100 ft.) WITHIN THE LIMITS OF THE TANGENT.
4. SEE TEMPORARY ROADWAY LIGHTING DETAIL FOR MORE INFORMATION. THE COST FOR TEMPORARY LIGHTS WILL BE INCLUDED IN LUMP SUM COST FOR TEMPORARY LIGHTING SYSTEM.
5. CONTRACTOR TO COORDINATE WITH COM ED ON PROPOSED LOCATION FOR TEMPORARY LIGHTING.
6. ALL TEMPORARY PAVEMENT MARKING INSTALLED DURING STAGE II TO BE REMOVED PRIOR TO PERMANENT PAVEMENT MARKING INSTALLATION. WORK TO BE PAID FOR AS WORK ZONE PAVEMENT MARKING REMOVAL.

REVISIONS	
NAME	DATE

ILLINOIS DEPARTMENT OF TRANSPORTATION  
 US 20 OVER  
 PRAIRIE AND SIMPSON ROADS

TRAFFIC CONTROL PLAN  
 STAGE II

SCALE: VERT. 1" = 50'  
 HORIZ. 1" = 50'

DATE 04/03/07

DRAWN BY AJP  
 CHECKED BY SPF

PLOT DATE = 6/20/2007  
 FILE NAME = P:\2273-96  
 PLOT SCALE = 8SCALE6  
 USER NAME = USER19