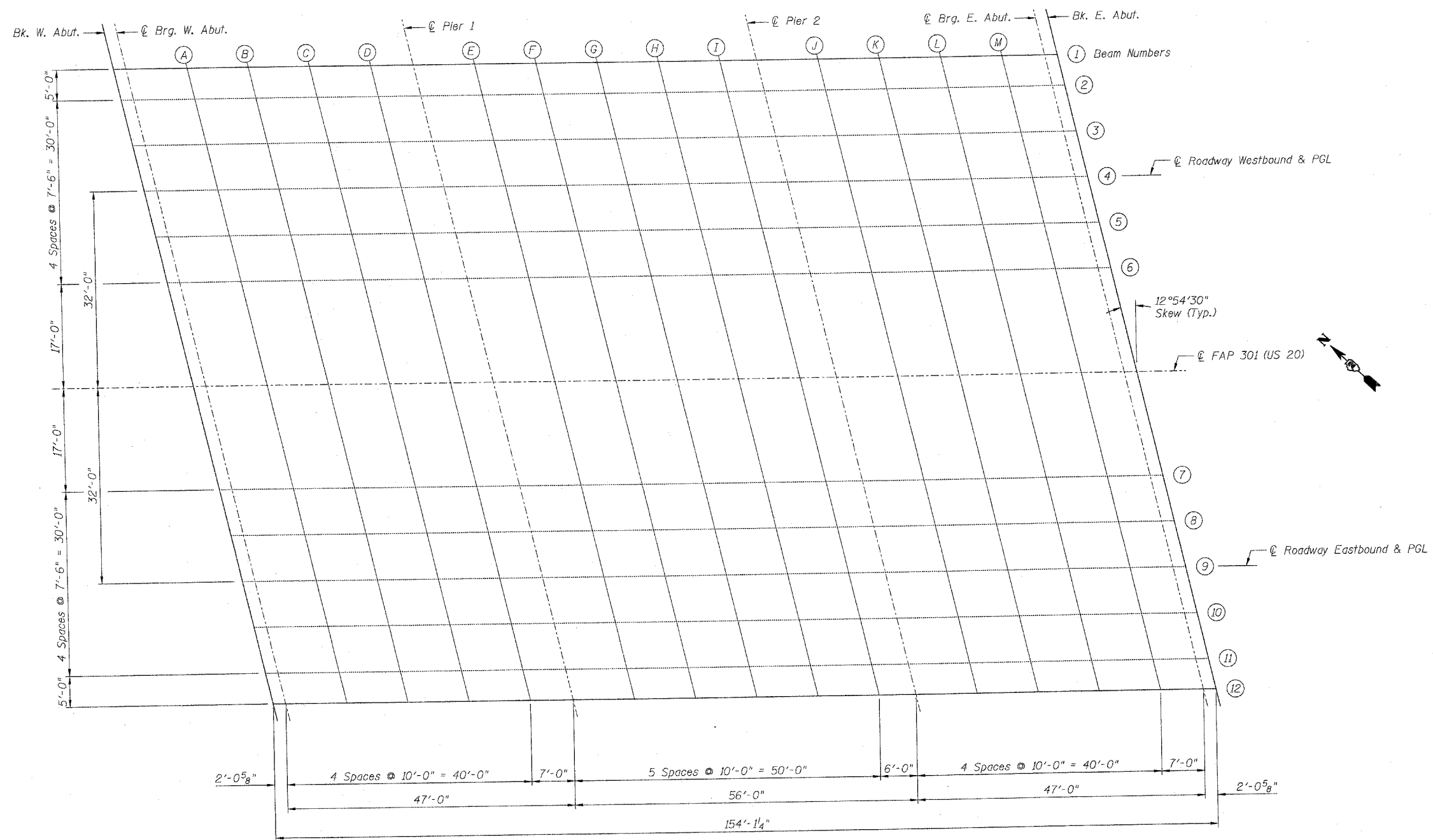


STATE OF ILLINOIS  
DEPARTMENT OF TRANSPORTATION

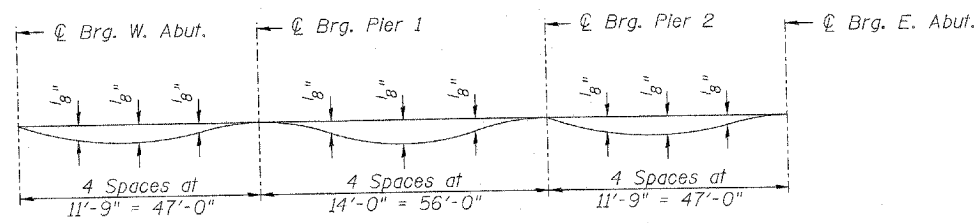
ROUTE NO.	SECTION	COUNTY	TOTAL SHEETS	SHEET NO.
F.A.P. 301 (US 20)	(2HB-2)D	WINNEBAGO	107	26
FED. ROAD DIST. NO. 7	ILLINOIS	FED. AID PROJECT-		

Contract #64B07

SHEET NO. 4  
43 SHEETS



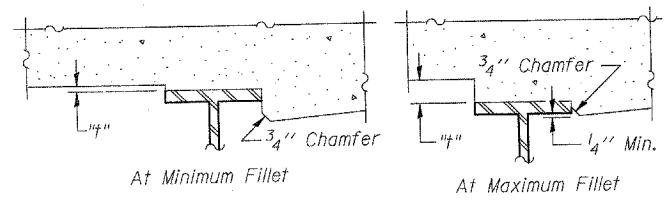
PLAN FOR TOP OF SLAB ELEVATIONS



DEAD LOAD DEFLECTION DIAGRAM

(Includes weight of concrete only.)

Note:  
The above deflections are not to be used in the field if the Engineer is working from the "Theoretical Grade Elevations Adjusted for Dead Load Deflection".



FILLET HEIGHTS

To determine "t": After all structural steel has been erected, elevations of the top flanges of the beams shall be taken at intervals shown on this sheet. These elevations subtracted from the "Theoretical Grade Elevations Adjusted for Dead Load Deflection" shown on Sheets 5 and 6, minus slab thickness, equals the fillet heights "t" above top flange of beams.

Plans Prepared by: Zroka Engineering, P.C.

PLAN OF TOP OF SLAB  
ELEVATIONS  
F.A.P. ROUTE 301 (US 20)  
OVER PRAIRIE ROAD  
SECTION (2HB-2)D  
WINNEBAGO COUNTY  
STATION 841+89.60  
STRUCTURE NO. 101-0051 (W.B.)  
STRUCTURE NO. 101-0052 (E.B.)

DESIGNED	LAS
CHECKED	DAZ
DRAWN	SAW
CHECKED	LAS