

STATE OF ILLINOIS
DEPARTMENT OF TRANSPORTATION

ROUTE NO.	SECTION	COUNTY	TOTAL SHEETS	SHEET NO.
F.A.P. 301 (US 20)	(2HB -2)D	WINNEBAGO	107	29
FED. ROAD DIST. NO. 7	ILLINOIS	FED. AID PROJECT-		

SHEET NO. 7
43 SHEETS

Contract #64B07

NORTH CURB LINE

Location	Station	Offset	Theoretical Grade Elevations
End W. Appr. Pav't.	840+70.04	-22.00	765.43
A	840+80.04	-22.00	765.33
B	840+90.04	-22.00	765.23
Bk. W. Abut.	841+00.04	-22.00	765.13

NORTH EDGE OF PAVEMENT

Location	Station	Offset	Theoretical Grade Elevations
End W. Appr. Pav't.	840+72.33	-12.00	765.62
A	840+82.33	-12.00	765.52
B	840+92.33	-12.00	765.42
Bk. W. Abut.	841+02.33	-12.000	765.32

☉ WB ROADWAY & PGL

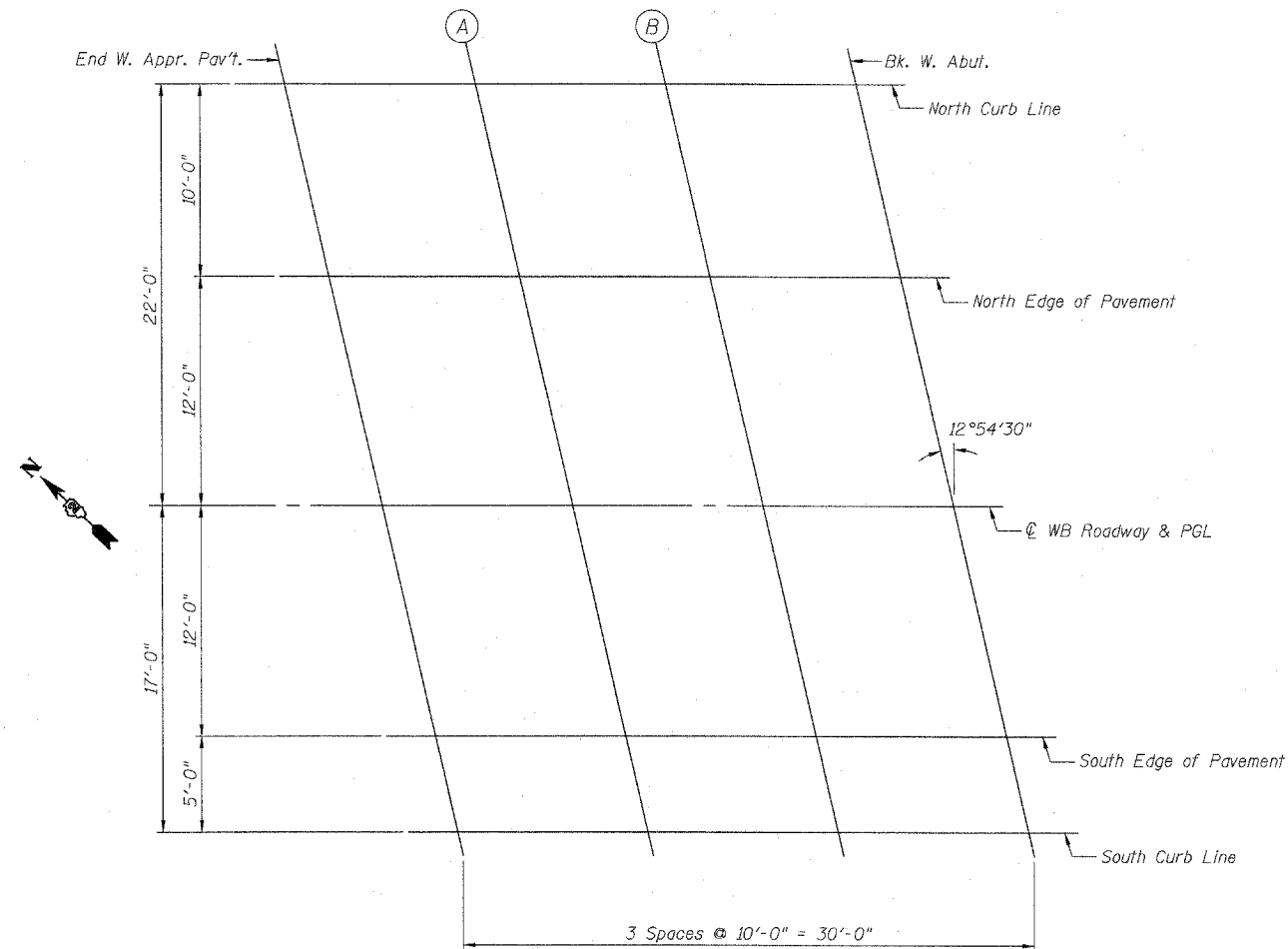
Location	Station	Offset	Theoretical Grade Elevations
End W. Appr. Pav't.	840+75.08	0.00	765.78
A	840+85.08	0.00	765.68
B	840+95.08	0.00	765.58
Bk. W. Abut.	841+05.08	0.00	765.48

SOUTH EDGE OF PAVEMENT

Location	Station	Offset	Theoretical Grade Elevations
End W. Appr. Pav't.	840+77.83	12.00	765.57
A	840+87.83	12.00	765.47
B	840+97.83	12.00	765.37
Bk. W. Abut.	841+07.83	12.00	765.27

SOUTH CURB LINE

Location	Station	Offset	Theoretical Grade Elevations
End W. Appr. Pav't.	840+78.98	17.00	765.45
A	840+88.98	17.00	765.35
B	840+98.98	17.00	765.25
Bk. W. Abut.	841+08.98	17.00	765.15



PLAN

DESIGNED	LAS
CHECKED	DAZ
DRAWN	SAW
CHECKED	LAS

TOP OF SLAB ELEVATIONS
NORTHWEST APPROACH
F.A.P. ROUTE 301 (US 20)
OVER PRAIRIE ROAD
SECTION (2HB-2)D
WINNEBAGO COUNTY
STATION 841+89.60
STRUCTURE NO. 101-0051 (W.B.)
STRUCTURE NO. 101-0052 (E.B.)

Plans Prepared by: Zroka Engineering, P.C.