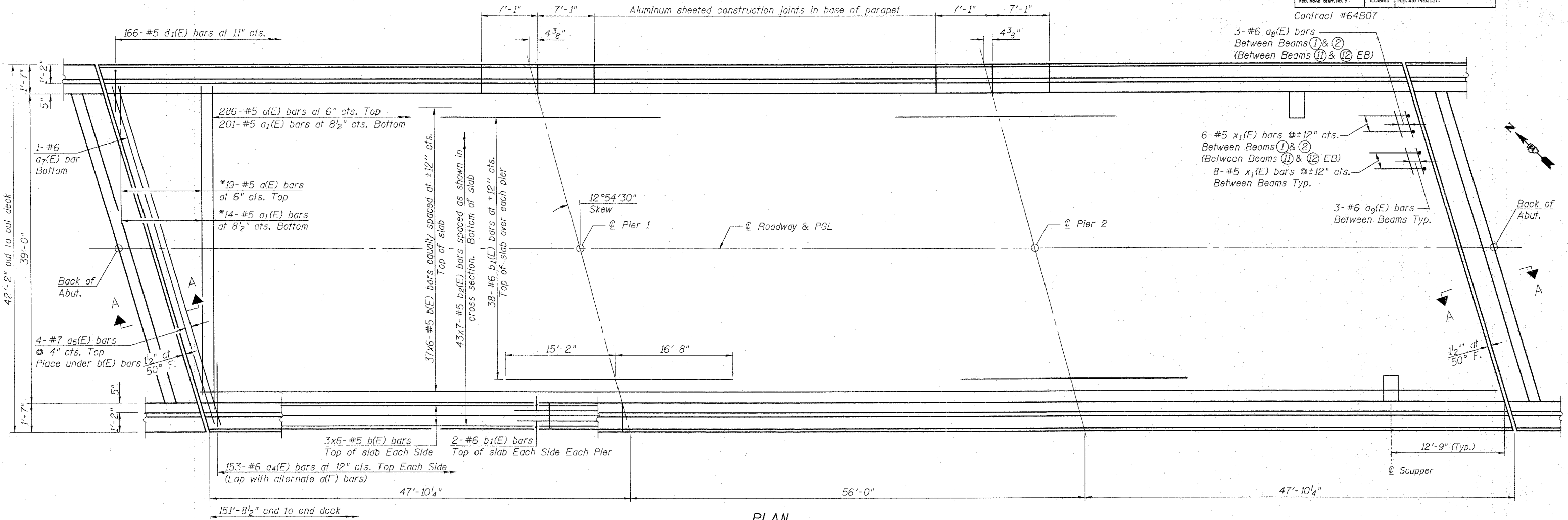


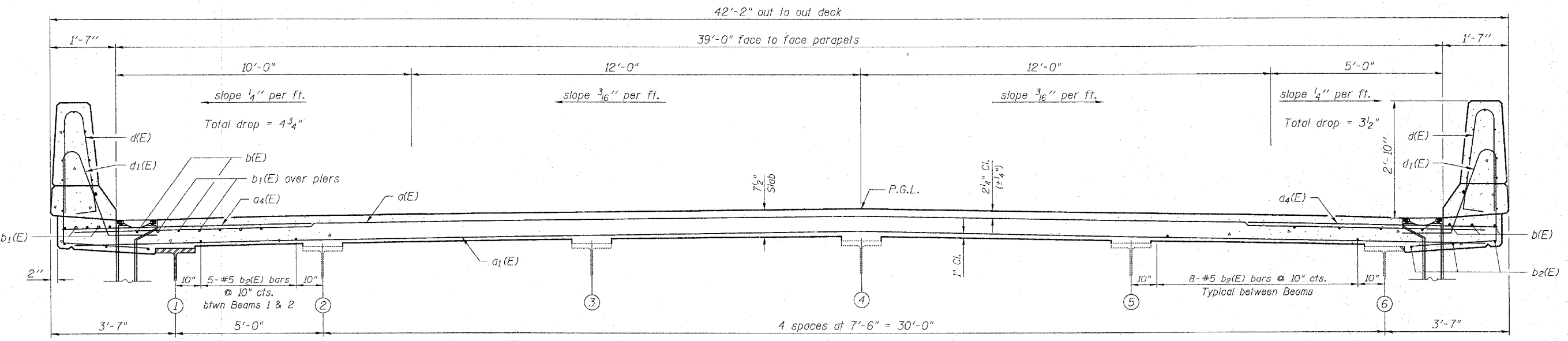
* Order a(E) & a₁(E) bars full length.
Cut to fit skew and use remainder of bars in opposite end.

STATE OF ILLINOIS
DEPARTMENT OF TRANSPORTATION

ROUTE NO.	SECTION	COUNTY	STATION	SHEET NO.	SHEET NO. 11
F.A.P. 301 (US 20)	(2HB-2)D	WINNEBAGO	107	33	43 SHEETS
FED. ROAD DIST. NO. 7	ILLINOIS	FED. AID PROJECT-			



PLAN



CROSS SECTION
(Looking East)

Note: WB deck shown, EB similar

DESIGNED	LAS
CHECKED	DAZ
DRAWN	SAW
CHECKED	LAS

S-2-R(30°)

11-1-06

MINIMUM BAR LAP

#5 bar = 2'-2"
#6 bar = 2'-7"
#7 bar = 3'-5"

NEAR MIDSPAN

Notes:
Cut longitudinal reinforcement to clear scuppers.
See Sheet 12 of 43 for superstructure details and Bill of Material.
Bars indicated thus 43x7-#5 etc. indicates 43 lines of bars with 7 lengths per line.
See Sheet 12 of 43 for parapet reinforcement.

Plans Prepared by: Zroka Engineering, P.C.

SUPERSTRUCTURE PLAN
F.A.P. ROUTE 301 (US 20)
OVER PRAIRIE ROAD
SECTION (2HB-2)D
WINNEBAGO COUNTY
STATION 841+89.60

STRUCTURE NO. 101-0051 (W.B.)
STRUCTURE NO. 101-0052 (E.B.)