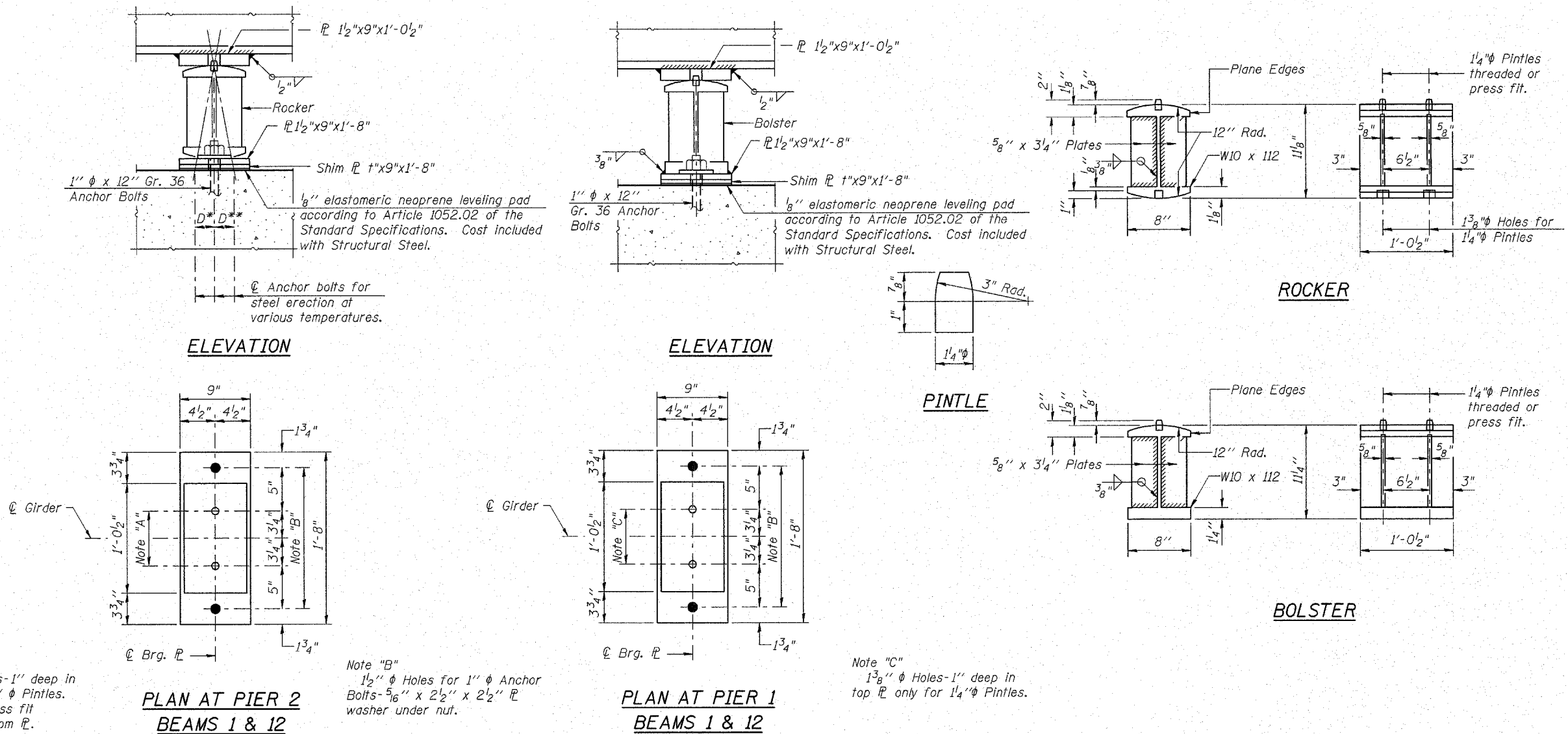


STATE OF ILLINOIS  
DEPARTMENT OF TRANSPORTATION

ROUTE NO.	SECTION	COUNTY	TOTAL SHEETS	SHEET NO.	SHEET NO. 17
F.A.P. 301 (US 20)	(2HB-2)D	WINNEBAGO	107	39	43 SHEETS
FED. ROAD DIST. NO. 7	ILLINOIS	FED. AID PROJECT-			

Contract #64B07



BEARING ASSEMBLY DETAILS

Note "A"  
 $1\frac{3}{8}'' \phi$  Holes-1" deep in top  $\bar{\bar{L}}$  for  $1\frac{1}{4}'' \phi$  Pintles. Thread or press fit pintles in bottom  $\bar{\bar{L}}$ .

Note "B"  
 $1\frac{1}{2}'' \phi$  Holes for  $1'' \phi$  Anchor Bolts- $5\frac{1}{16}'' \times 2\frac{1}{2}'' \times 2\frac{1}{2}'' \bar{\bar{L}}$  washer under nut.

Note "C"  
 $1\frac{3}{8}'' \phi$  Holes-1" deep in top  $\bar{\bar{L}}$  only for  $1\frac{1}{4}'' \phi$  Pintles.

NOTES FOR SETTING OF ANCHOR BOLTS AT EXPANSION BEARINGS

- a.)  $D^*$  (Side of brg. away from fixed brg.)  
 $D^* = \frac{1}{8}''$  per each 100' of expansion for every 15° fall below the normal temp. of 50° F.
- $D^{**}$  (Side of brg. toward fixed brg.)  
 $D^{**} = \frac{1}{8}''$  per each 100' of expansion for every 15° rise above the normal temp. of 50° F.
- b.) After girders have been erected and dimensions  $D^*$  &  $D^{**}$  determined, holes shall be drilled and anchor bolts shall be installed as shown on Sheets 32 & 33 of 43. All fixed anchor bolts may be built into the masonry.

Note:  
Anchor bolts shall be ASTM F1554 all-thread (or an Engineer-approved alternate material) of the grade(s) and diameter(s) specified. ASTM A307 Grade C anchor bolts may be used in lieu of ASTM F1554 Grade 36 ( $F_y=36ksl$ ). The corresponding specified grade of AASHTO M314 anchor bolts may be used in lieu of ASTM F1554.

DESIGNED	LAS
CHECKED	DAZ
DRAWN	SAW
CHECKED	LAS

I-2-B

10-22-04

Plans Prepared by: Zroka Engineering, P.C.

PIER STEEL  
BEARING ASSEMBLY  
F.A.P. ROUTE 301 (US 20)  
OVER PRAIRIE ROAD  
SECTION (2HB-2)D  
WINNEBAGO COUNTY  
STATION 841+89.60  
STRUCTURE NO. 101-0051 (W.B.)  
STRUCTURE NO. 101-0052 (E.B.)