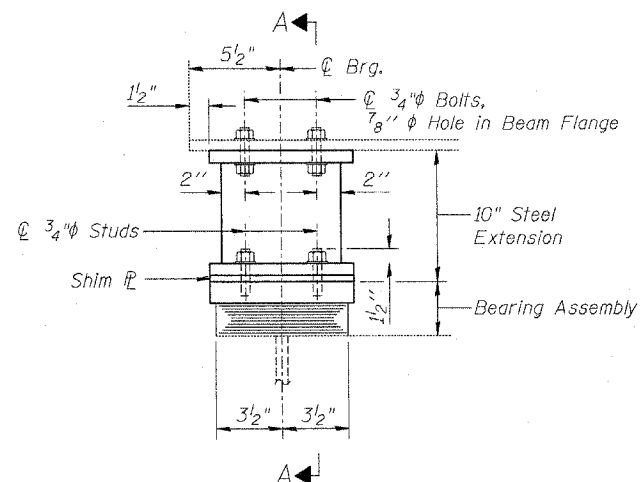


STATE OF ILLINOIS  
DEPARTMENT OF TRANSPORTATION

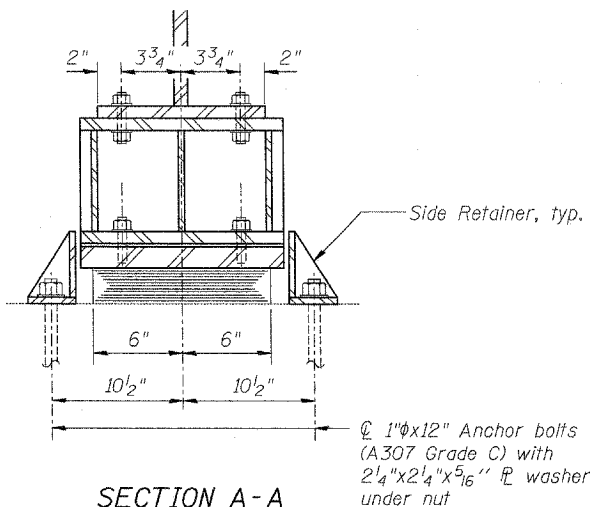
ROUTE NO.	SECTION	COUNTY	TOTAL SHEETS	SHEET NO.
F.A.P. 301 (US 20)	(2HB -2)D	WINNEBAGO	107	40
FED. ROAD DIST. NO. 7	ILLINOIS	FED. AID PROJECT-		

SHEET NO. 18  
43 SHEETS

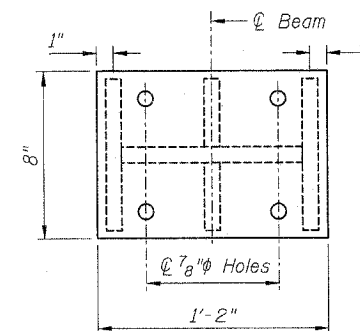
Contract #64B07



ELEVATION AT ABUT.



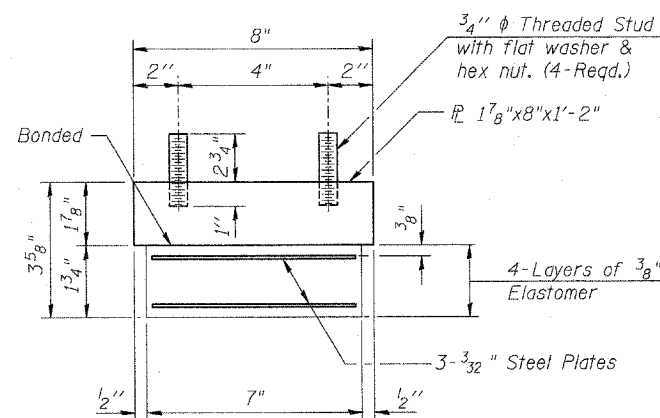
SECTION A-A



PLAN STEEL EXTENSION

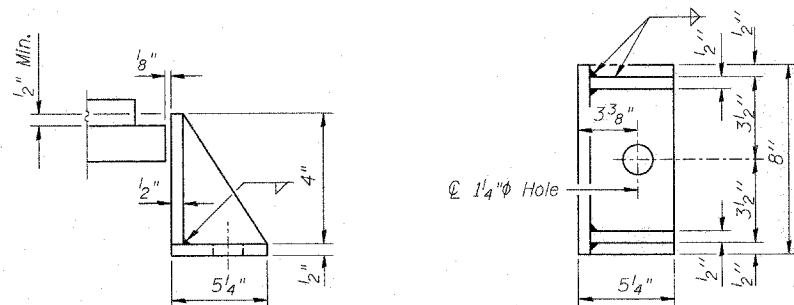
**TYPE I ELASTOMERIC EXP. BRG.**

@ West Abutments



BEARING ASSEMBLY

Note:  
Shim plates shall not be placed under Bearing Assembly.



SIDE RETAINER

Equivalent rolled angle with stiffeners will be allowed in lieu of welded plates.

Notes:

Anchor bolts shall be ASTM F1554 all-thread (or an Engineer-approved alternate material) of the grade(s) and diameter(s) specified. ASTM A307 Grade C anchor bolts may be used in lieu of ASTM F1554 Grade 36 (Fy=36ksi). The corresponding specified grade of AASHTO M314 anchor bolts may be used in lieu of ASTM F1554.

Anchor bolts at fixed bearings may be either cast in place or installed in holes drilled after the supported member is in place.

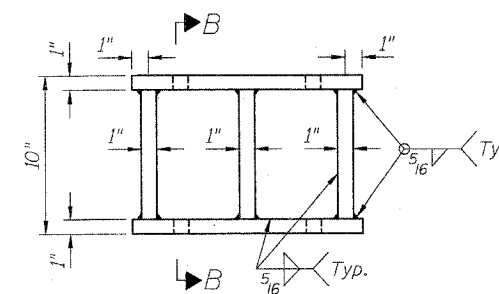
Anchor bolts for side retainers may be cast in place or installed in holes drilled before or after members are in place.

Drilled and set anchor bolts shall be installed according to Article 521.06 of the Standard Specifications.

Side retainers, steel extensions and other steel members required for the bearing assembly shall be included in the cost of Elastomeric Bearing Assembly, Type I.

Two 1/8" adjusting shims shall be provided for each bearing in addition to all other plates or shims and placed as shown on bearing details.

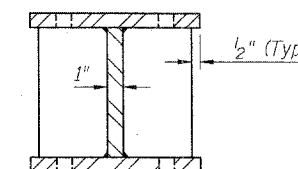
Bolt holes for the proposed bearing to be field drilled in the bottom flange of the existing beams using the proposed steel extension as the template. Cost included with Furnishing and Erecting Structural Steel.



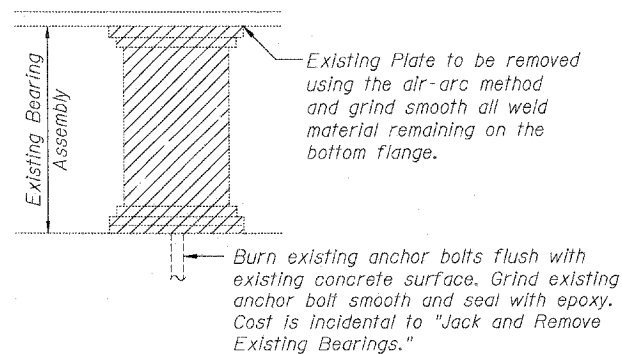
ELEVATION STEEL EXTENSION

Note:  
Steel Extensions are to be used on bearings for Beams 2 thru 11 only. Beams 1 & 12 do not have extensions.

Note:  
Prior to ordering any material, the Contractor shall verify in the field all bearing height and shim thickness dimensions.



SECTION B-B



EXISTING BEARING REMOVAL DETAIL

**BILL OF MATERIAL**

Item	Unit	Total
Jack & Remove Existing Bearings	Each	10
Elastomeric Bearing Assembly Type I	Each	12
Anchor Bolts, 1"	Each	24

**ELASTOMERIC BEARING ASSEMBLY TYPE I**  
F.A.P. ROUTE 301 (US 20)  
OVER PRAIRIE ROAD  
SECTION (2HB-2)D  
WINNEBAGO COUNTY  
STATION 841+89.60

STRUCTURE NO. 101-0051 (W.B.)  
STRUCTURE NO. 101-0052 (E.B.)

DESIGNED	LAS
CHECKED	DAZ
DRAWN	SAW
CHECKED	LAS

I-2-E1

11-1-06

Plans Prepared by: Zroka Engineering, P.C.