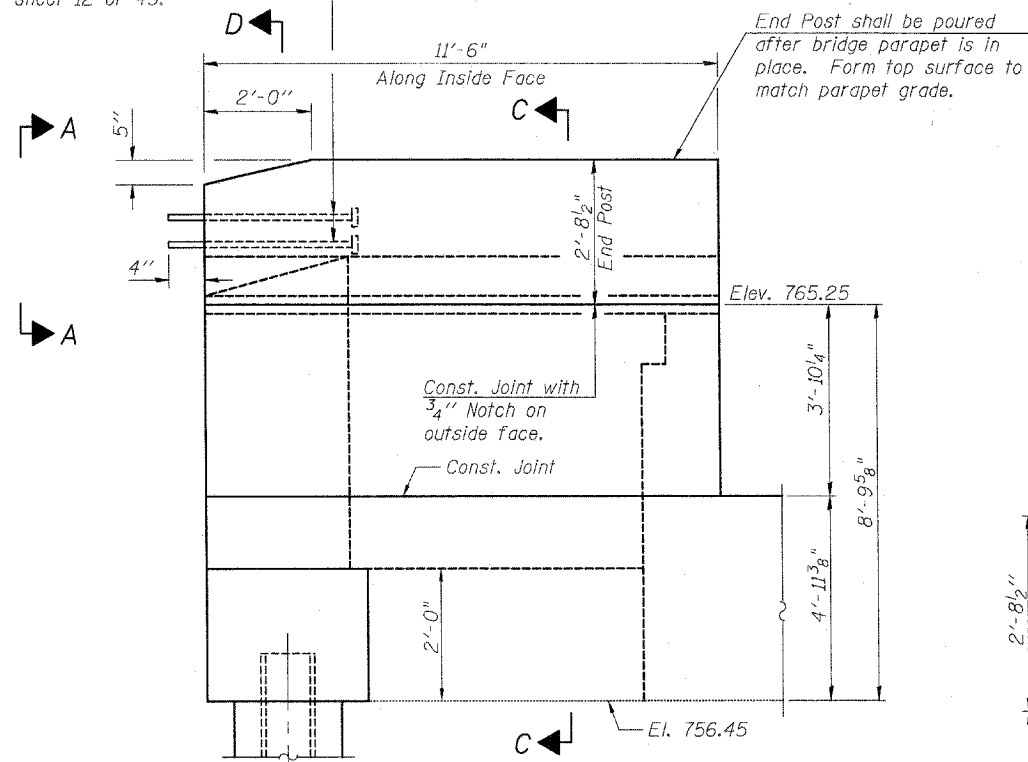


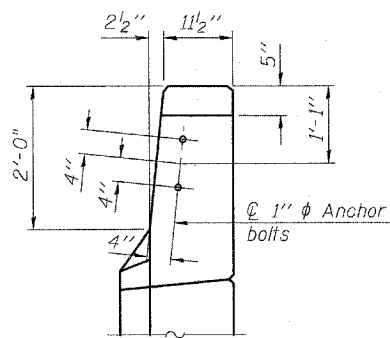
1" ϕ Anchor Bolts. Cost included with Concrete Superstructure on sheet 12 of 43.

STATE OF ILLINOIS
DEPARTMENT OF TRANSPORTATION

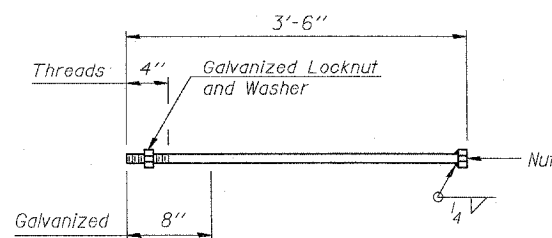
ROUTE NO.	SECTION	COUNTY	TRIP SHEETS	SHEET NO.	SHEET NO. 21 43 SHEETS
F.A.P. 301 (US 20)	(2HB -2)D	WINNEBAGO	107	43	
FED. ROAD DIST. NO. 7	ILLINOIS	FED. AID PROJECT-			
Contract #64B07					



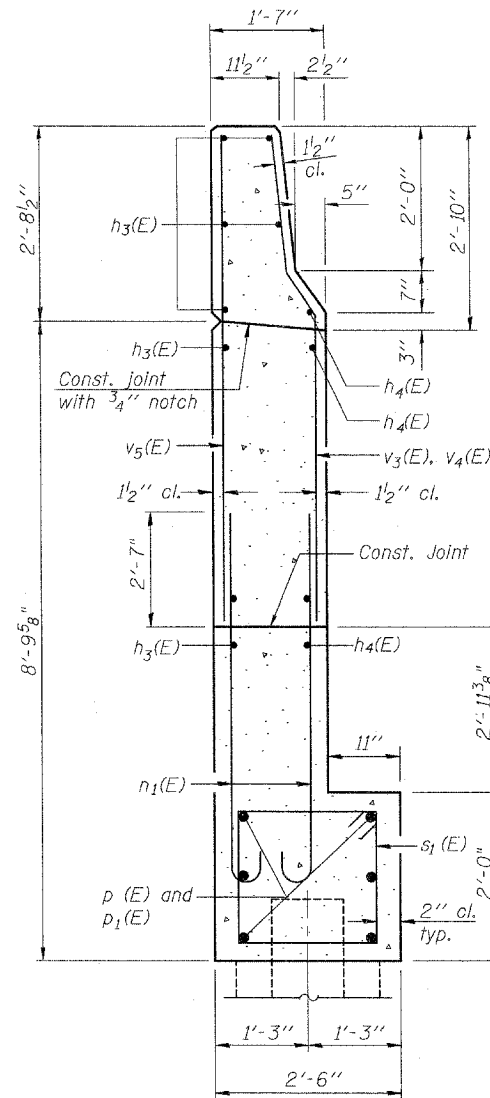
WING WALL ELEVATION
Showing Dimensions



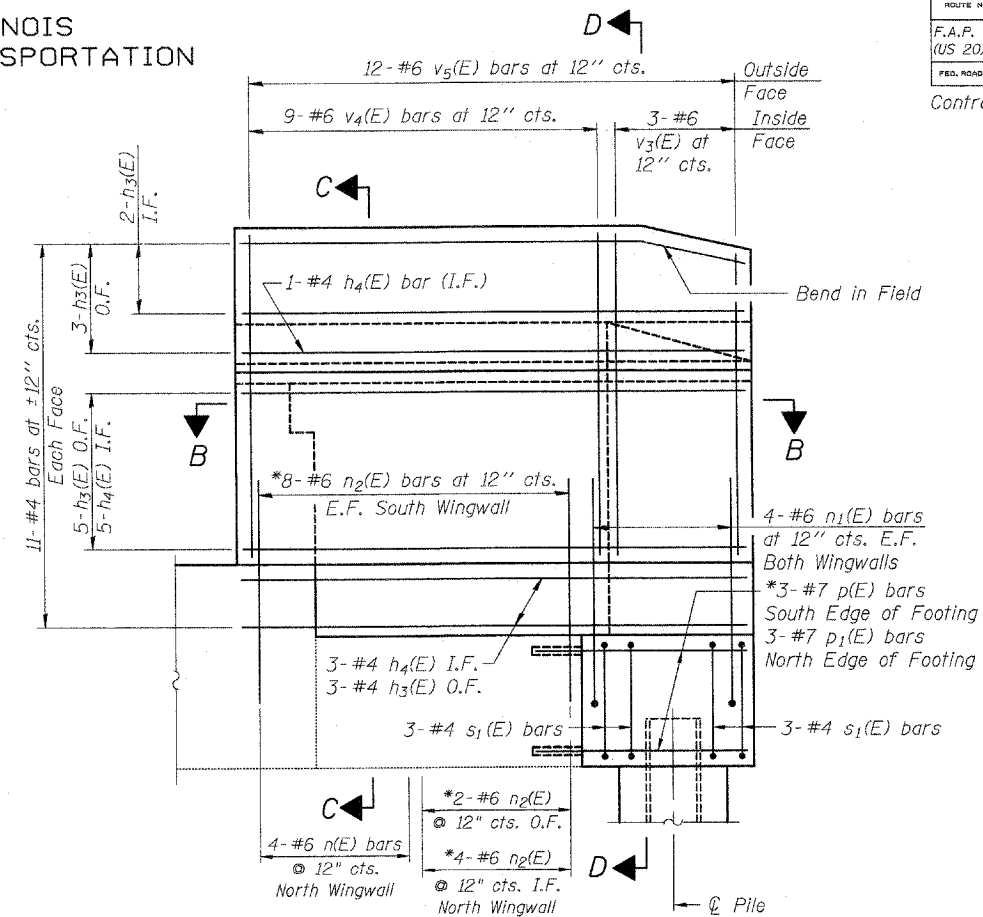
VIEW A-A



1" ϕ ANCHOR BOLT



SECTION D-D



WING WALL ELEVATION
Showing Reinforcement

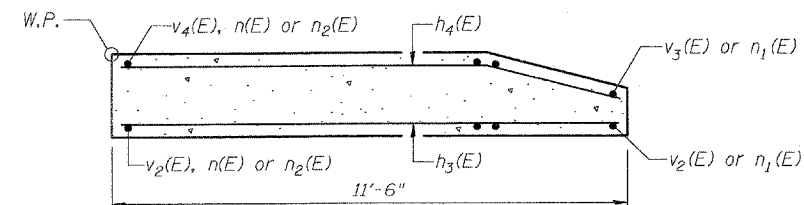
Note: $h_3(E)$ and $h_4(E)$ bars for south wingwall to be cut to fit at existing abutment bearing seat.

*Epoxy grout #6 $n_2(E)$ bars in 1" ϕ hole.

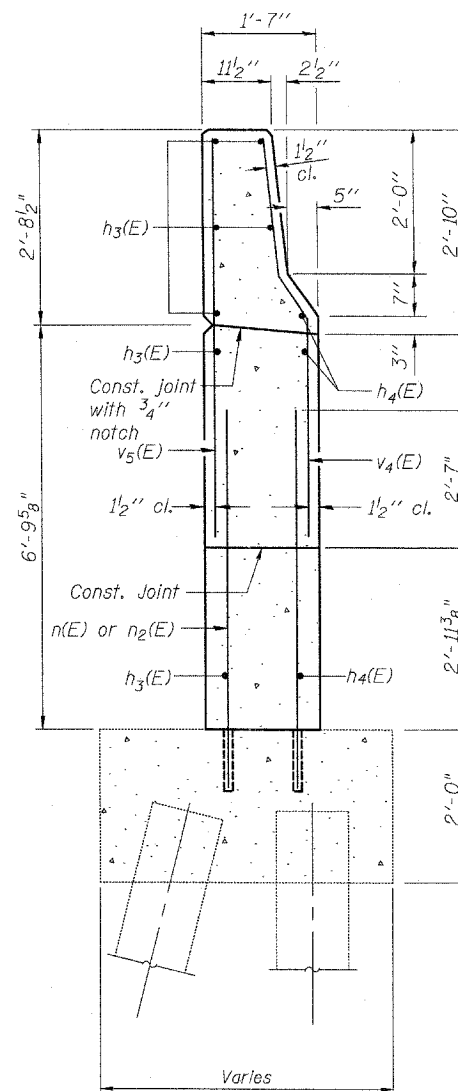
*Epoxy grout #7 $p(E)$ and $p_1(E)$ bars in 1 1/8" ϕ hole.

Holes shall be drilled a minimum of 9" deep. The bars shall be drilled and epoxy grouted according to Article 584 of the Standard Specifications.

Quantity of concrete in end post included with Concrete Superstructure on sheet 12 of 43.



SECTION B-B



SECTION C-C

DESIGNED	LAS
CHECKED	DAZ
DRAWN	SAW
CHECKED	LAS

A-1-D

11-1-06

Plans Prepared by: Zroka Engineering, P.C.

**WESTBOUND WEST
ABUTMENT WINGWALLS
F.A.P. ROUTE 301 (US 20)
OVER PRAIRIE ROAD
SECTION (2HB-2)D
WINNEBAGO COUNTY
STATION 841+89.60
STRUCTURE NO. 101-0051 (W.B.)
STRUCTURE NO. 101-0052 (E.B.)**