

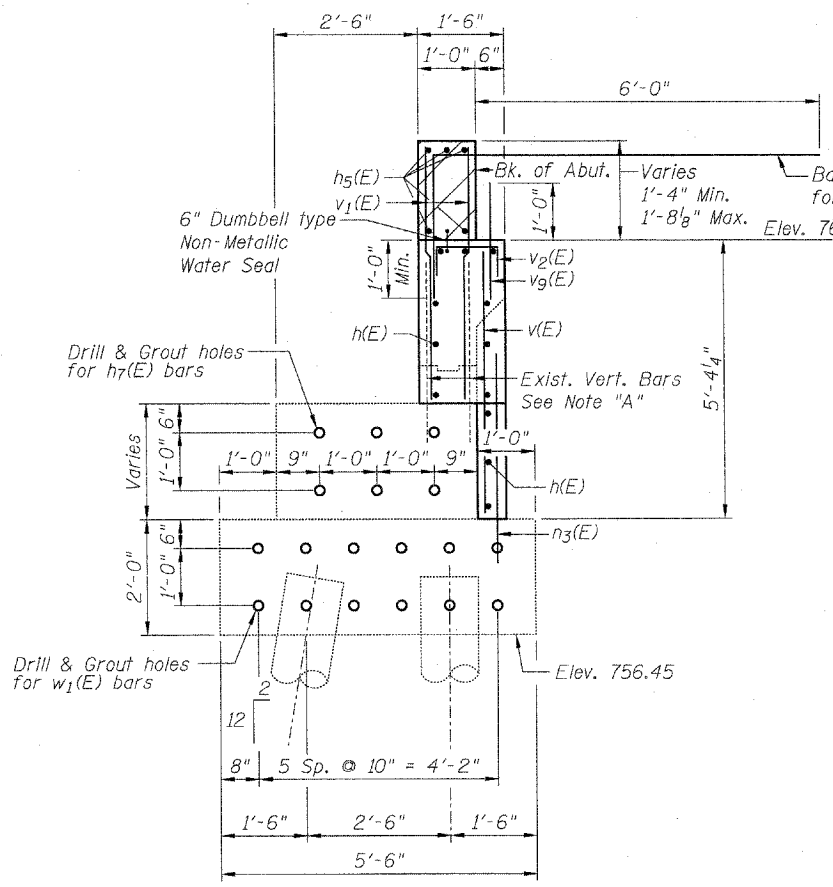
STATE OF ILLINOIS
DEPARTMENT OF TRANSPORTATION

ROUTE NO.	SECTION	COUNTY	INITIAL SHEETS	SHEET NO.	SHEET NO. 22 43 SHEETS
F.A.P. 301 (US 20)	(2HB -2)D	WINNEBAGO	107	44	
FED. ROAD DIST. NO. 7		ILLINOIS	FED. AID PROJECT		

Contract #64B07

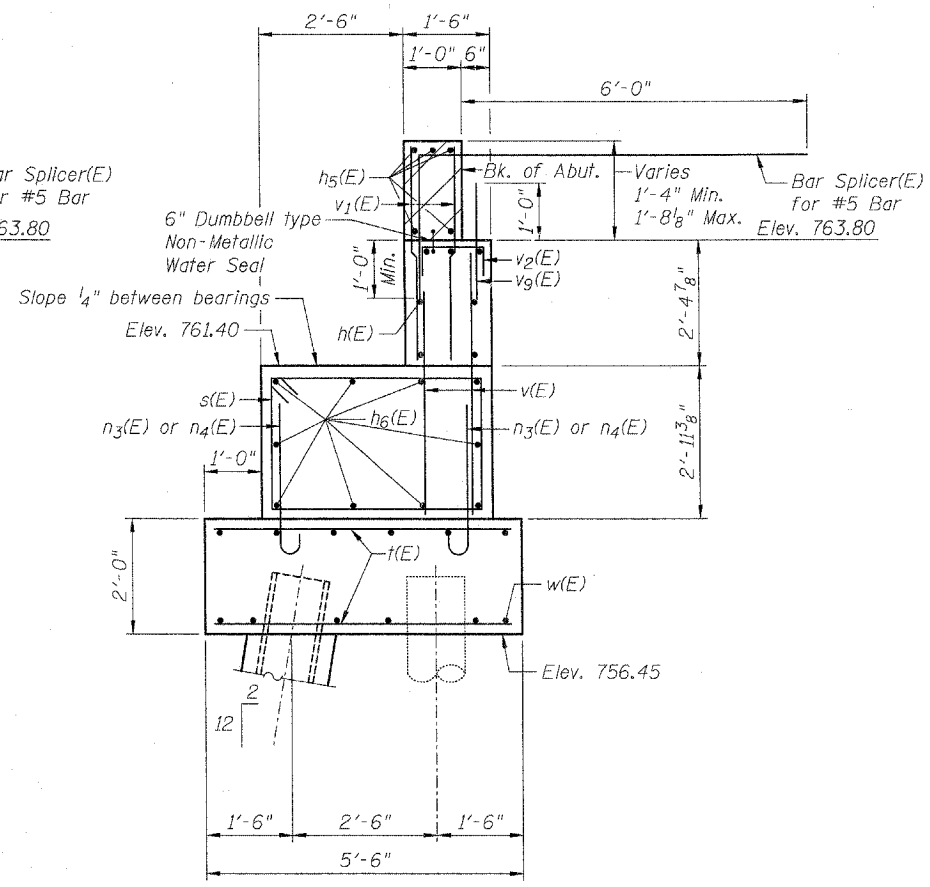
**ABUTMENT
BILL OF MATERIAL**

Bar	No.	Size	Length	Shape
h(E)	24	#5	21'-1"	—
h ₁ (E)	12	#5	4'-4"	└
h ₂ (E)	12	#5	4'-4"	└
h ₃ (E)	26	#4	11'-3"	—
h ₄ (E)	18	#4	11'-3"	—
h ₅ (E)	10	#6	21'-3"	—
h ₆ (E)	10	#7	5'-6"	—
h ₇ (E)	6	#7	5'-0"	—
n(E)	4	#6	13'-10"	—
n ₁ (E)	16	#6	7'-0"	—
n ₂ (E)	22	#6	6'-4"	—
n ₃ (E)	42	#6	3'-11"	—
n ₄ (E)	7	#6	4'-7"	—
p(E)	6	#7	4'-7"	—
p ₁ (E)	6	#7	6'-4"	—
s(E)	7	#4	13'-5"	—
s ₁ (E)	12	#4	8'-5"	—
t(E)	6	#6	11'-0"	—
u(E)	3	#6	7'-9"	—
v(E)	46	#5	5'-0"	—
v ₁ (E)	82	#5	4'-0"	—
v ₂ (E)	41	#5	2'-2"	—
v ₃ (E)	6	#6	5'-9"	—
v ₄ (E)	18	#6	6'-6"	—
v ₅ (E)	24	#6	6'-4"	—
v ₉ (E)	41	#5	2'-0"	—
w(E)	8	#6	6'-3"	—
w ₁ (E)	12	#6	4'-0"	—
Structure Excavation		Cu. Yd.	88	
Concrete Structures		Cu. Yd.	23.8	
Reinforcement Bars, Epoxy Coated		Pound	3,980	
Furnishing - Piles, HP12x53		Foot	124	
Driving Piles		Foot	124	
Test Pile, HP12x53		Each	1	
Concrete Encasement		Cu. Yd.	1.2	
Concrete Sealer		Sq. Ft.	173	
Porous Granular Embankment, Special		Cu. Yd.	52	
Concrete Removal		Cu. Yd.	16.0	
Geocomposite Wall Drain		Sq. Ft.	24	
Pipe Underdrains For Structures 4"		Sq. Ft.	51	
Bar Splicers		Each	41	

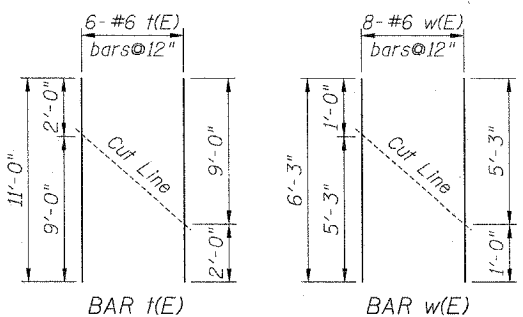
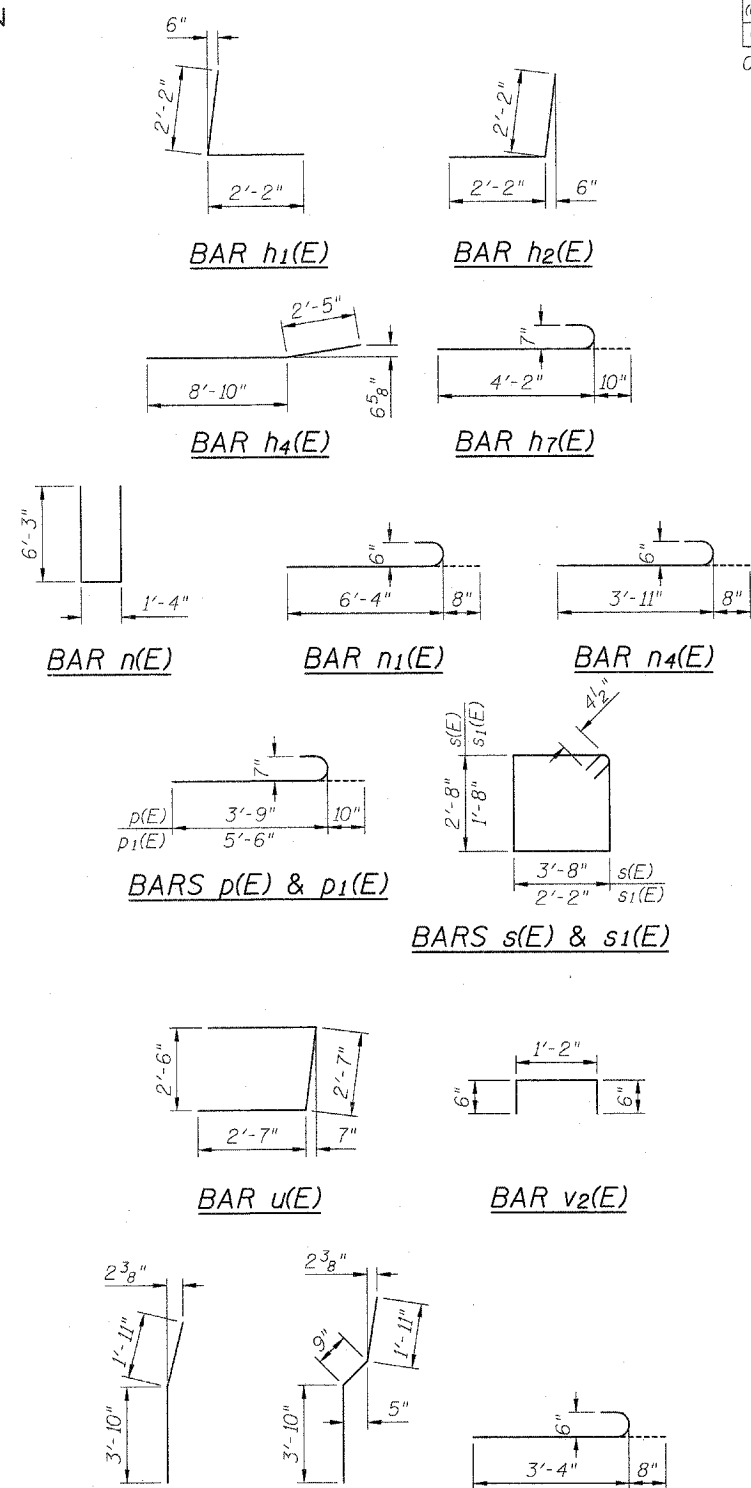


**SECTION THRU
EXISTING ABUTMENT**

Note "A": Existing vertical bars to remain in place, blast clean and lap with new vertical bars. Existing horizontal bars shall be removed.



**SECTION THRU PROPOSED
ABUTMENT EXTENSION**



CUTTING DIAGRAMS

Order bars full length. Cut as shown and use half of bars top and half on bottom.

- Notes:
- Hatched area to be poured after superstructure false work has been removed. Quantity of concrete included with Concrete Superstructure.
 - Space reinforcement in cap to miss anchor bolts.
 - Concrete Sealer shall be applied to all exposed surfaces of new concrete for the abutment.
 - For details of piles and Concrete Encasement details, see sheet 38 of 43.
 - For details of Bar Splicers, see sheet 37 of 43.
 - For drainage details behind Abutment, see Sheet 2 of 43.

PILE DATA
 Type: HP12x53
 Nominal Required Bearing: 418 kips
 Allowable Resistance Available: 139 kips
 Est. Length: 62'
 No. Production Piles: 2
 No. Test Piles: 1
 The Steel H-piles shall be according to AASHTO M270 Grade 50.

The test pile shall be driven to 110 percent of the Nominal Required Bearing indicated in the pile data information.

Plans Prepared by: Zroka Engineering, P.C.

**WESTBOUND WEST
ABUTMENT DETAILS
F.A.P. ROUTE 301 (US 20)
OVER PRAIRIE ROAD
SECTION (2HB-2)D
WINNEBAGO COUNTY
STATION 841+89.60
STRUCTURE NO. 101-0051 (W.B.)
STRUCTURE NO. 101-0052 (E.B.)**

DESIGNED	LAS
CHECKED	DAZ
DRAWN	SAW
CHECKED	LAS