

STATE OF ILLINOIS
DEPARTMENT OF TRANSPORTATION

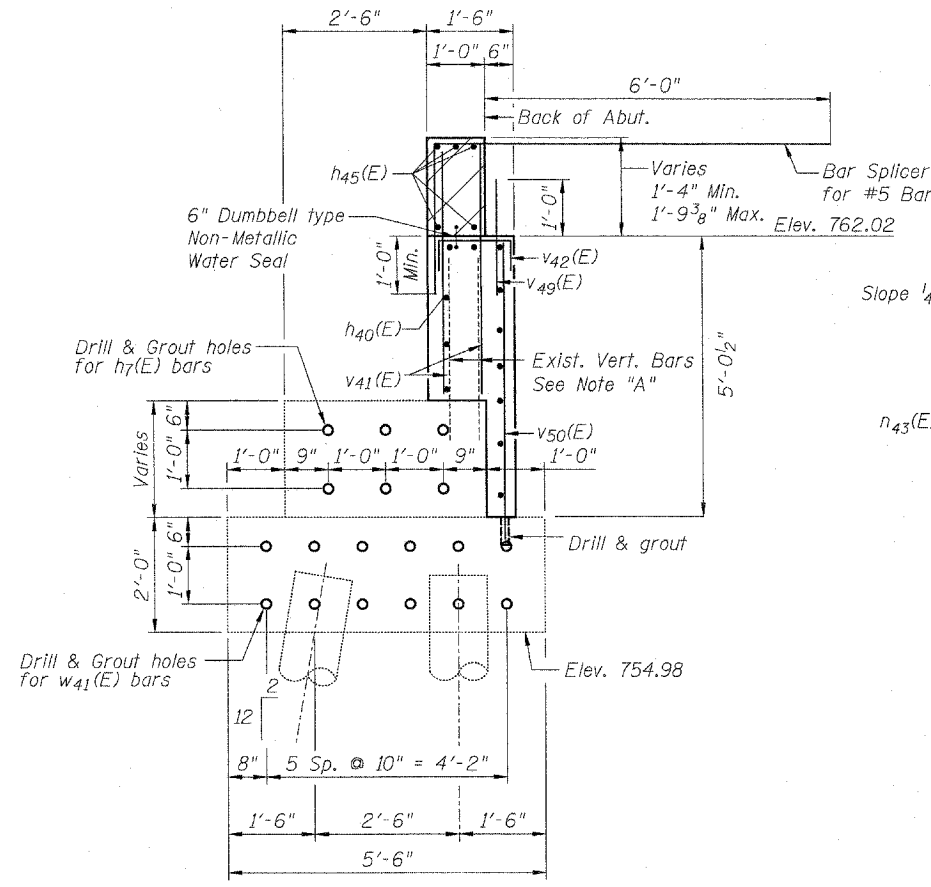
ROUTE NO.	SECTION	COUNTY	TOTAL SHEETS	SHEET NO.	SHEET NO.
F.A.P. 301 (US 20)	(2HB-2D)	WINNEBAGO	107	53	31
FED. ROAD DIST. NO. 7		ILLINOIS	FED. AID PROJECT-		

Contract #64B07

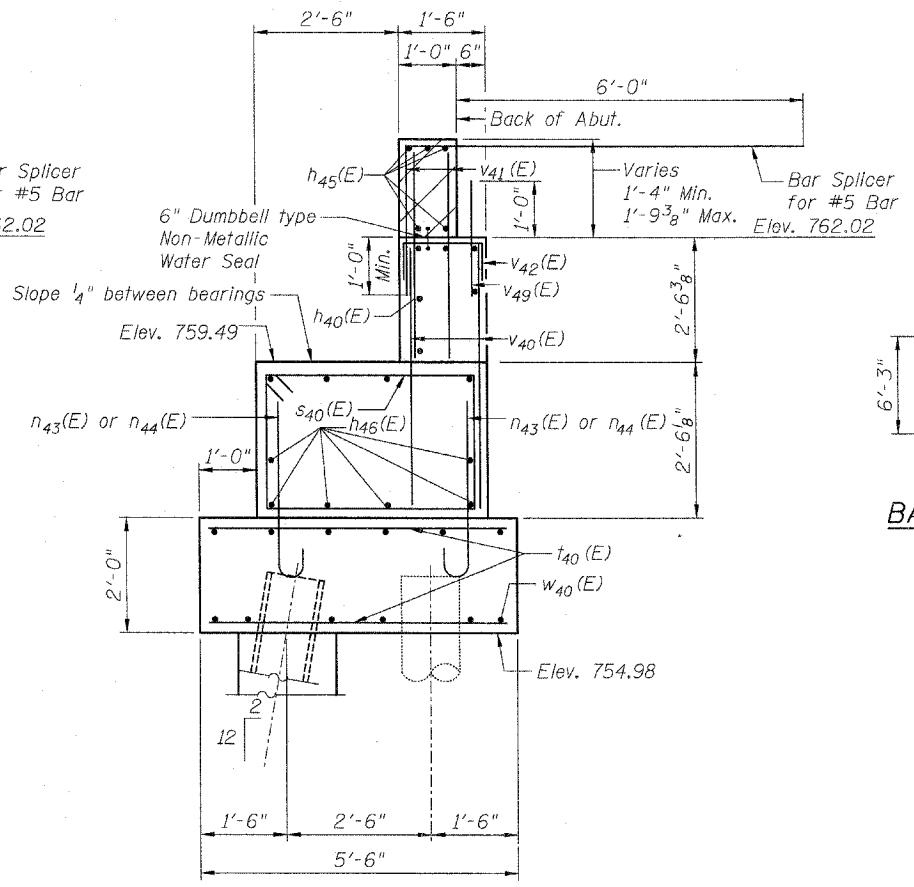
**ABUTMENT
BILL OF MATERIAL**

Bar	No.	Size	Length	Shape
h40(E)	22	#5	21'-1"	—
h41(E)	10	#5	4'-4"	L
h42(E)	10	#5	4'-4"	L
h43(E)	26	#4	11'-3"	—
h44(E)	18	#4	11'-3"	—
h45(E)	10	#6	21'-3"	—
h46(E)	10	#7	5'-6"	—
h47(E)	6	#7	5'-0"	—
n40(E)	4	#6	13'-10"	—
n41(E)	16	#6	7'-0"	—
n42(E)	22	#6	6'-4"	—
n43(E)	7	#6	3'-1"	—
n44(E)	5	#6	4'-1"	—
p40(E)	6	#7	5'-1"	—
p41(E)	6	#7	6'-7"	—
s40(E)	7	#4	12'-5"	—
s41(E)	12	#4	8'-5"	—
t40(E)	6	#6	11'-0"	—
u40(E)	3	#6	7'-6"	—
v40(E)	10	#5	4'-10"	—
v41(E)	82	#5	3'-5"	—
v42(E)	41	#5	2'-2"	—
v43(E)	6	#6	5'-9"	—
v44(E)	18	#6	6'-6"	—
v45(E)	24	#6	6'-4"	—
v49(E)	41	#5	2'-0"	—
v50(E)	36	#5	5'-7"	—
w40(E)	8	#6	6'-3"	—
w41(E)	12	#6	4'-0"	—

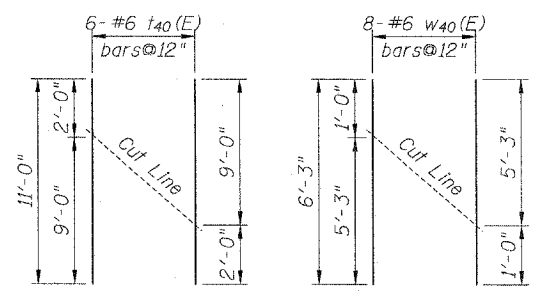
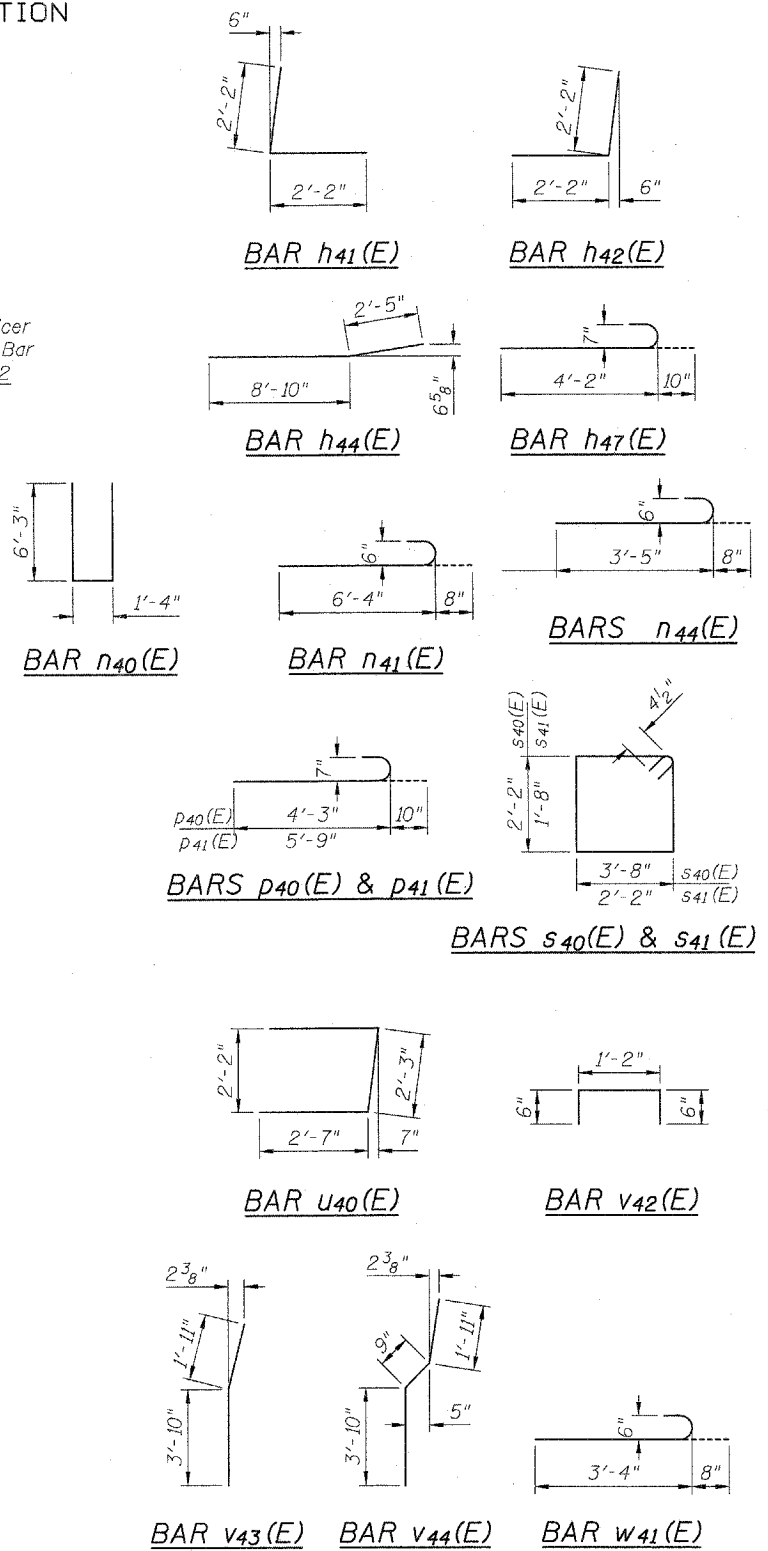
Structure Excavation	Cu. Yd.	77
Concrete Structures	Cu. Yd.	21.1
Reinforcement Bars, Epoxy Coated	Pound	3,660
Furnishing Steel Piles, HP12x53	Foot	124
Driving Piles	Foot	122
Test Pile, HP12x53	Each	1
Concrete Encasement	Cu. Yd.	.8
Concrete Sealer	Sq. Ft.	263
Porous Granular Embankment, Special	Cu. Yd.	48
Concrete Removal	Cu. Yd.	14.4
Geocomposite Wall Drain	Sq. Ft.	22.2
Pipe Underdrains For Structures 4"	Sq. Yd.	51
Bar Splicers	Each	41



SECTION THRU EXISTING ABUTMENT



SECTION THRU PROPOSED ABUTMENT EXTENSION



CUTTING DIAGRAMS

Order bars full length. Cut as shown and use half of bars top and half on bottom.

Note "A": Existing vertical bars to remain in place, blast clean and lap with new vertical bars. Existing horizontal bars shall be removed.

- Notes:
- Hatched area to be poured after superstructure false work has been removed. Quantity of concrete included with Concrete Superstructure.
 - Space reinforcement in cap to miss anchor bolts.
 - Pour steps monolithically with cap.
 - For details of piles and Concrete Encasement details, see sheet 38.
 - For details of Bar Splicers, see sheet 37.
 - For drainage details behind Abutment, see Sheet 36.

Concrete Sealer shall be applied to all permanently exposed portions of the proposed backwalls, abutment fronts and bearing seats, new concrete only.

DESIGNED	SSM
CHECKED	JLA
DRAWN	GYR
CHECKED	SSM

PILE DATA

Type: HP12x53
Nominal Required Bearing: 418 kips
Allowable Resistance Available: 139 kips
Est. Length: 62'
No. Production Piles: 2
No. Test Piles: 1
The Steel H-piles shall be according to AASHTO M270 Grade 50.

The test pile shall be driven to 110 percent of the Nominal Required Bearing indicated in the pile data information.

Plans Prepared by: Kudrna & Associates, Ltd.

**EASTBOUND EAST
ABUTMENT DETAILS
F.A.P. ROUTE 301 (US 20)
OVER PRAIRIE ROAD
SECTION (2HB-2D)
WINNEBAGO COUNTY
STATION 841+89.60
STRUCTURE NO. 101-0051 (W.B.)
STRUCTURE NO. 101-0052 (E.B.)**