

STATE OF ILLINOIS
DEPARTMENT OF TRANSPORTATION

ROUTE NO.	SECTION	COUNTY	TOTAL SHEETS	SHEET NO.
F.A.P. 301 (US 20)	(2HB -2)D	WINNEBAGO	107	55
FED. ROAD DIST. NO. 7	ILLINOIS	FED. AID PROJECT-		

SHEET NO. 33
43 SHEETS

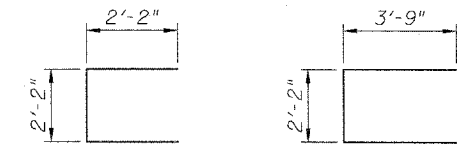
Contract #64B07

PIER 2
BILL OF MATERIAL

Bar	No.	Size	Length	Shape
h20(E)	3	#8	3'-6"	—
h21(E)	16	#5	13'-0"	—
h22(E)	16	#5	3'-4"	—
h23(E)	1	#5	10'-2"	—
h24(E)	1	#5	4'-11"	—
u20(E)	23	#5	6'-6"	□
u21(E)	42	#5	9'-8"	□
v22(E)	14	#5	24'-1"	—
v23(E)	18	#5	7'-0"	—
Structure Excavation		Cu. Yd.	18	
Concrete Structures		Cu. Yd.	17.4	
Reinforcement Bars, Epoxy Coated		Pound	1,380	
Furnishing - Piles, HP12x53		Foot	66	
Driving Piles		Foot	49	
Concrete Encasement		Cu. Yd.	0.4	
Concrete Sealer		Sq. Ft.	364	

For details of piles and Concrete Encasement, see sheet 38 of 43.

Concrete Sealer shall be applied to all exposed surfaces of new concrete for the pier.



BAR u20(E)

BAR u21(E)

MINIMUM BAR LAPS

#5 Bars = 2'-2"

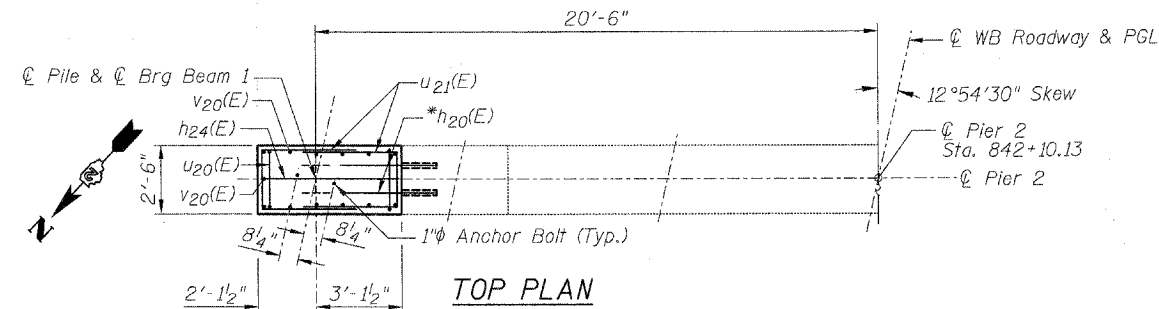
PILE DATA

Type: HP12x53
Nominal Required Bearing: 418 kips
Allowable Resistance Available: 139 kips
Est. Length: 66'
No. Production Piles: 1
No. Test Piles: None

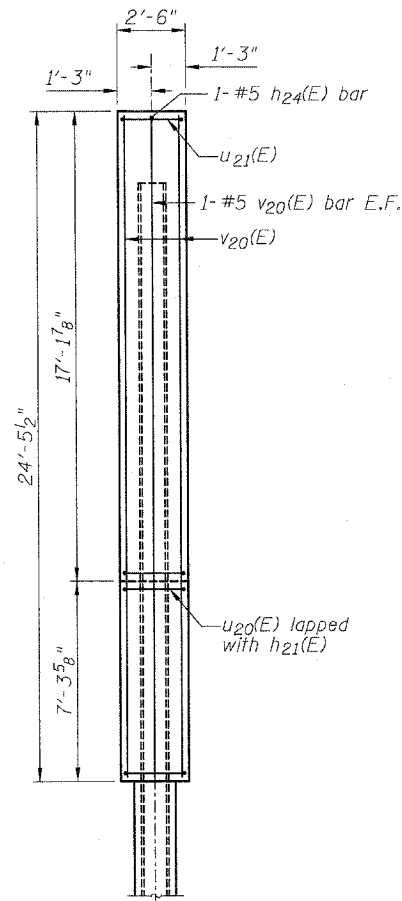
The Steel H-piles shall be according to AASHTO M270 Grade 50.

WESTBOUND PIER 2
F.A.P. ROUTE 301 (US 20)
OVER PRAIRIE ROAD
SECTION (2HB-2)D
WINNEBAGO COUNTY
STATION 841+89.60

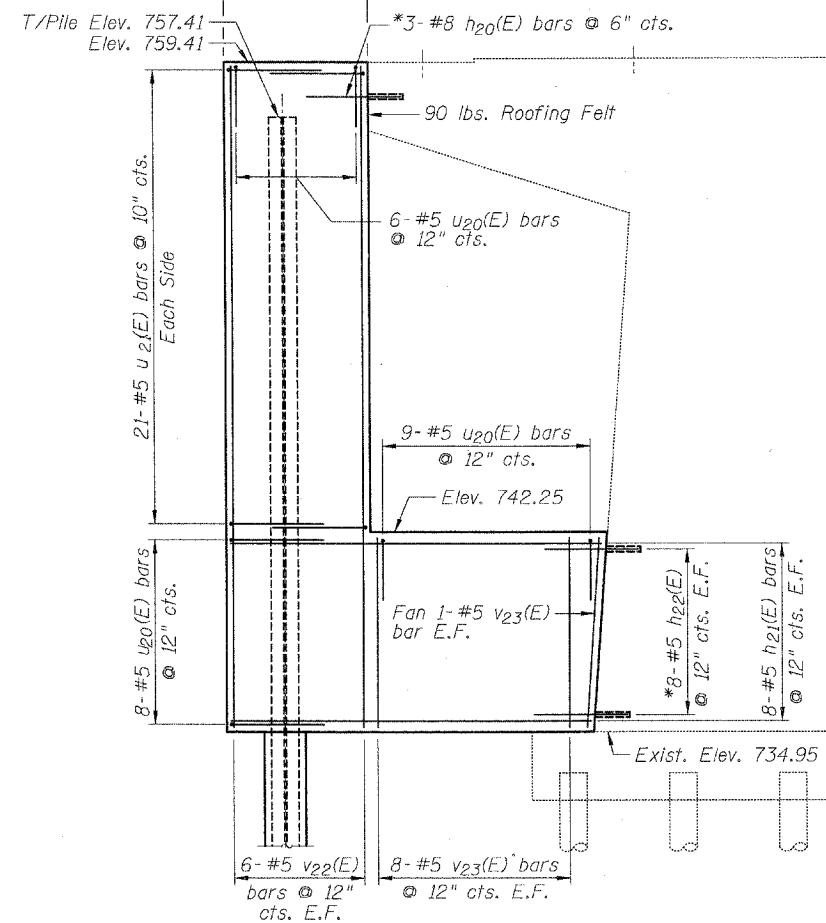
STRUCTURE NO. 101-0051 (W.B.)
STRUCTURE NO. 101-0052 (E.B.)



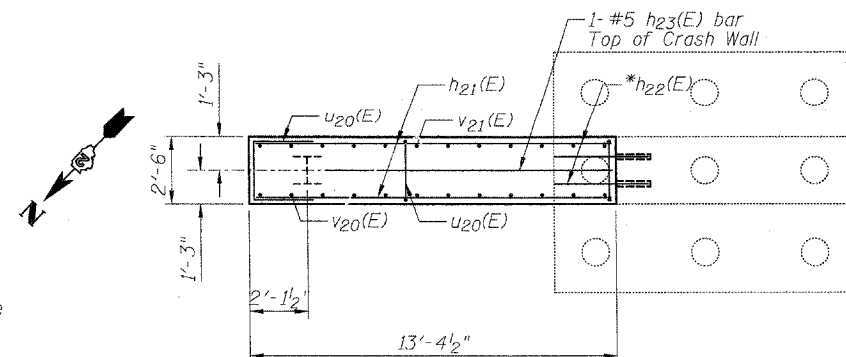
TOP PLAN



END VIEW



ELEVATION



FOOTING PLAN

*Epoxy grout #8 h20(E) bars in a 1 1/4" hole

*Epoxy grout #5 h22(E) bars in a 7/8" hole

Holes shall be drilled a minimum of 9" deep. The bars shall be drilled and epoxy grouted according to Article 584 of the Standard Specifications.

DESIGNED	LAS
CHECKED	DAZ
DRAWN	SAW
CHECKED	LAS