

STATE OF ILLINOIS
DEPARTMENT OF TRANSPORTATION

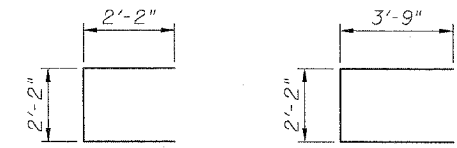
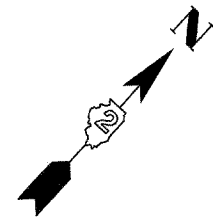
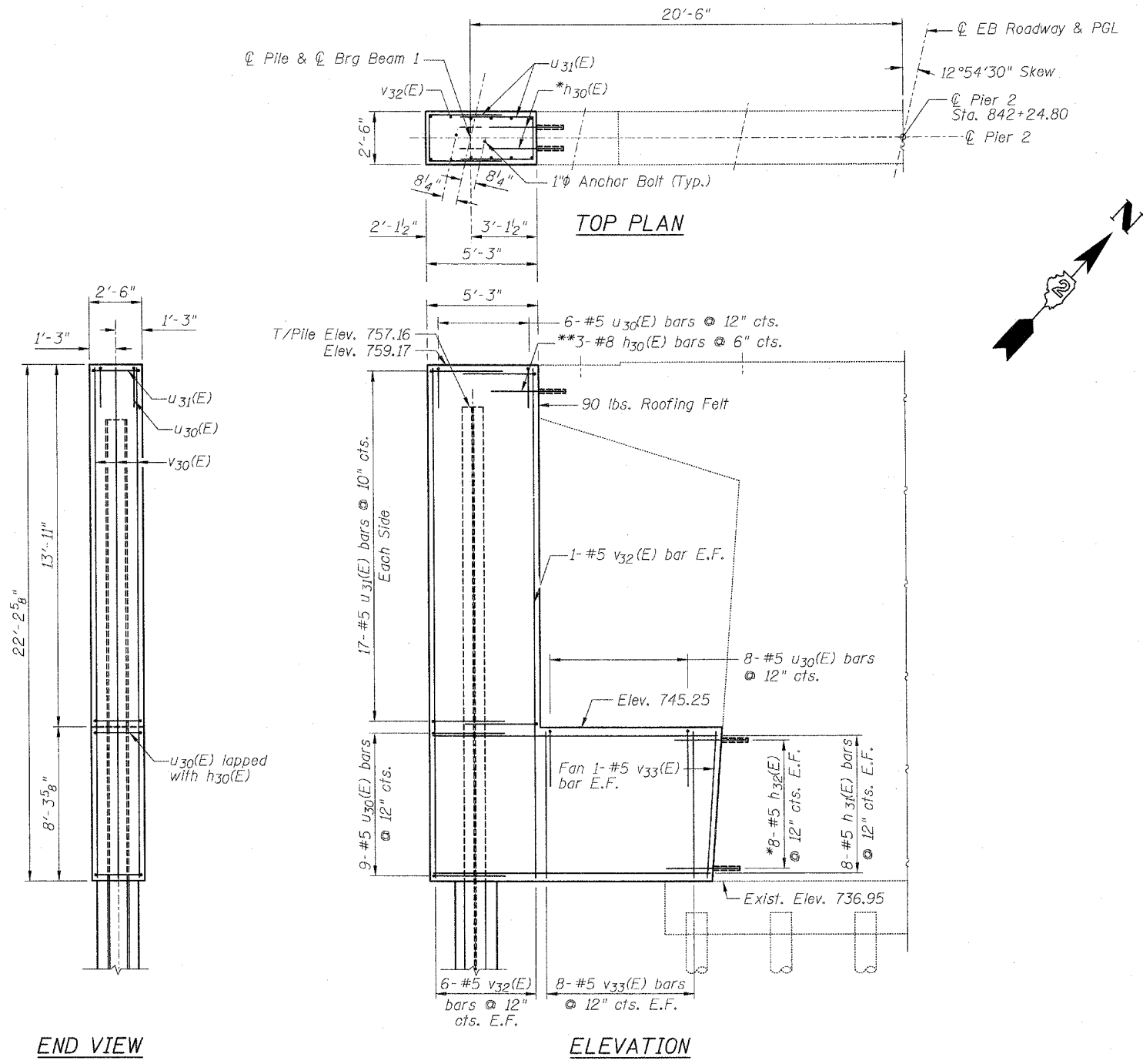
ROUTE NO.	SECTION	COUNTY	TOTAL SHEETS	SHEET NO.	SHEET NO. 35
F.A.P. 301 (US 20)	(2HB-2D)	WINNEBAGO	107	57	43 SHEETS
FED. ROAD DIST. NO. 7	ILLINOIS	FED. AID PROJECT			

Contract #64B07

PIER 2
BILL OF MATERIAL

Bar	No.	Size	Length	Shape
h ₃₀ (E)	3	#8	3'-6"	—
h ₃₁ (E)	16	#5	13'-0"	—
h ₃₂ (E)	16	#5	3'-4"	—
u ₃₀ (E)	23	#5	6'-6"	⊔
u ₃₁ (E)	34	#5	9'-8"	⊔
v ₃₂ (E)	14	#5	24'-1"	—
v ₃₃ (E)	18	#5	7'-11"	—
Item Unit Quantity				
Structure Excavation	Cu. Yd.	29		
Concrete Structures	Cu. Yd.	17.1		
Reinforcement Bars, Epoxy Coated	Pound	1,300		
Furnishing Steel Piles, HP12x53	Foot	66		
Driving Piles	Foot	52		
Concrete Encasement	Cu. Yd.	.4		
Concrete Sealer	Sq. Ft.	358		

For details of piles and Concrete Encasement, see sheet 38 of 42.



BAR U30(E) BAR U31(E)

MINIMUM BAR LAPS
#5 Bars = 2'-2"

PILE DATA

Type: HP12x53
Nominal Required Bearing: 418 kips
Allowable Resistance Available: 139 kips
Est. Length: 66'
No. Production Piles: 1
No. Test Piles: None

The Steel H-piles shall be according to AASHTO M270 Grade 50.

EASTBOUND PIER 2
F.A.P. ROUTE 301 (US 20)
OVER PRAIRIE ROAD
SECTION (2HB-2D)
WINNEBAGO COUNTY
STATION 841+89.60
STRUCTURE NO. 101-0051 (W.B.)
STRUCTURE NO. 101-0052 (E.B.)

Plans Prepared by: Kudrna & Associates, Ltd.

DESIGNED	SSM
CHECKED	JLA
DRAWN	GYR
CHECKED	SSM

*Epoxy grout #5 h₃₂(E) bars in a 7/8" hole.
**Epoxy grout #8 h₃₀(E) bars in a 1 1/4" hole x 12" deep.
Holes shall be drilled a minimum of 9" deep. Bars shall be drilled and epoxy grouted according to Article 584 of the Standard Specifications.

Concrete Sealer shall be applied to all permanently exposed portions of the crash wall, columns, and pier caps, new concrete only.