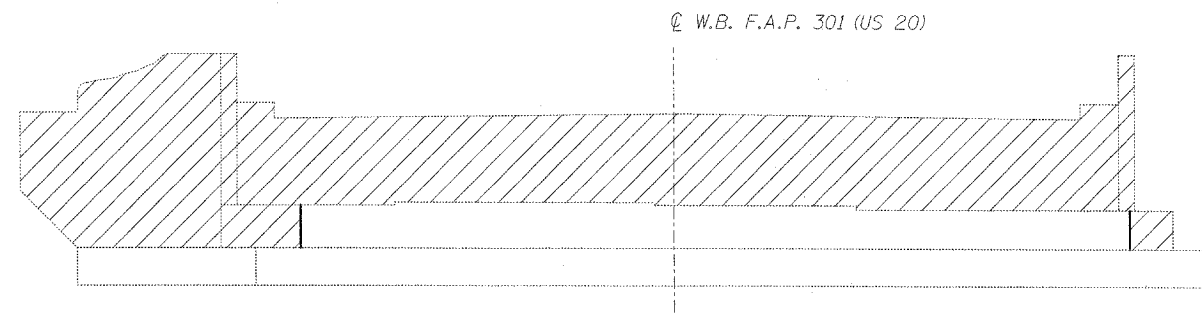


STATE OF ILLINOIS
DEPARTMENT OF TRANSPORTATION

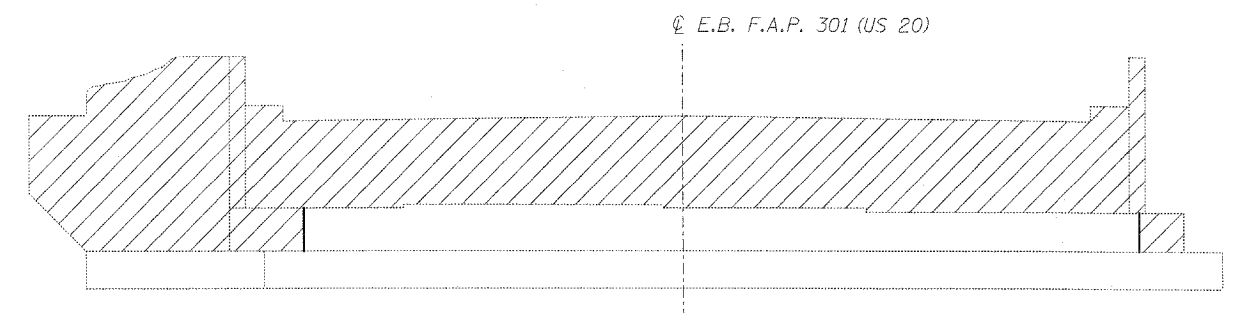
ROUTE NO.	SECTION	COUNTY	TOTAL SHEETS	SHEET NO.	SHEET NO. 18 34 SHEETS
F.A.P. 301 (US 20)	(2HB-1D)	WINNEBAGO	107	83	
FED. ROAD DIST. NO. 7	ILLINOIS	FED. AID PROJECT-			

Contract #64B07

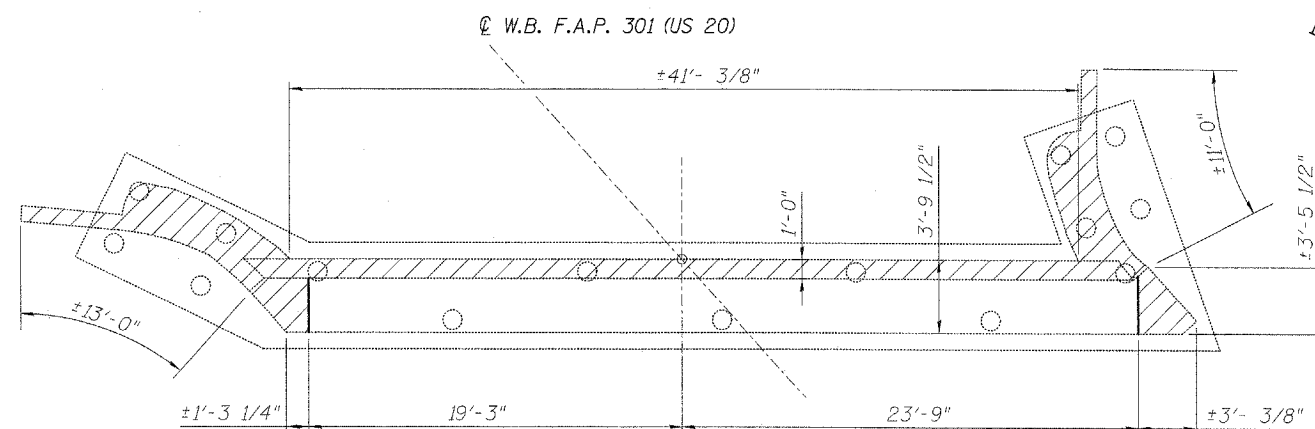
BASE LINE
F.A.P. 301 (US 20)



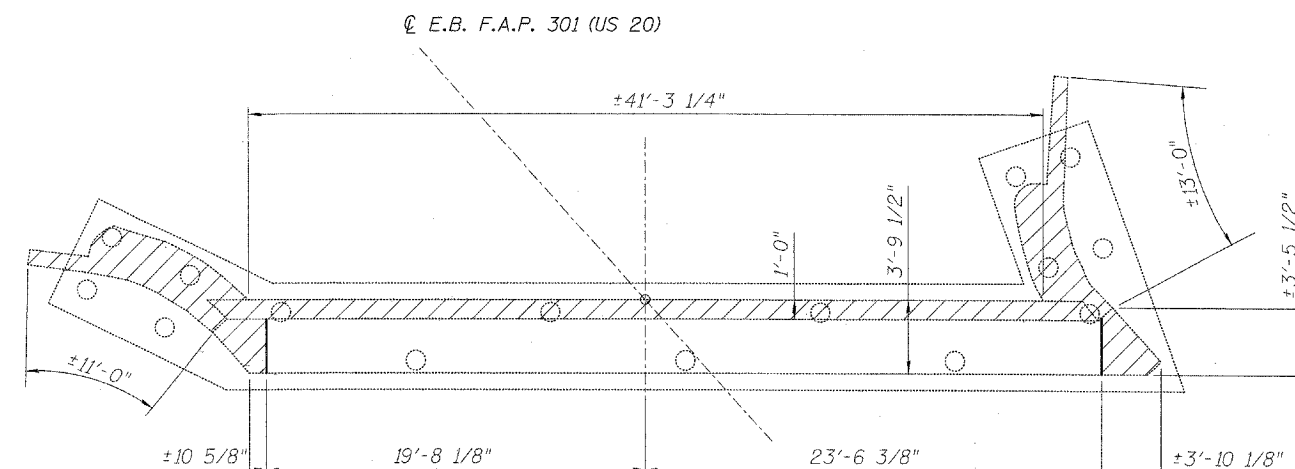
ELEVATION - STAGE I REMOVAL



ELEVATION - STAGE II REMOVAL



PLAN - STAGE I REMOVAL
EAST ABUTMENT (W.B. US 20)



PLAN - STAGE II REMOVAL
EAST ABUTMENT (E.B. US 20)

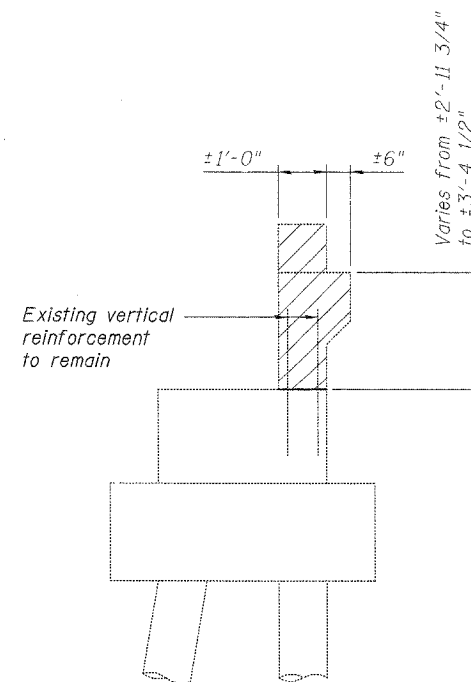
NOTES:

Hatch areas indicate removal. These areas include the wing walls down to the top of the existing footing, the abutment backwall to the top of the bearing seat and portions of the bearing seat and footing. In addition, partial removal of the top of the existing concrete pile indicated may also be required.

Existing vertical reinforcement extending into removed areas shall be cleaned, straightened and incorporated into new construction. Cost included with Concrete Removal.

Existing reinforcement not extending into new construction shall be cut off flush with existing concrete and sealed with a layer of epoxy. Cost included with Concrete Removal.

DESIGNED	SSM
CHECKED	JLA
DRAWN	GYR
CHECKED	SSM



SECTION THRU ABUTMENTS

TWO ABUTMENTS
BILL OF MATERIAL

ITEM	UNIT	TOTAL
Concrete Removal	Cu. Yd.	70.1

EAST ABUTMENT
CONCRETE REMOVAL DETAILS
F.A.P. ROUTE 301 (US 20)
OVER SIMPSON ROAD
SECTION (2HB-1D)
WINNEBAGO COUNTY
STATION 849+27.97
STRUCTURE NO. 101-0053 (W.B.)
STRUCTURE NO. 101-0054 (E.B.)