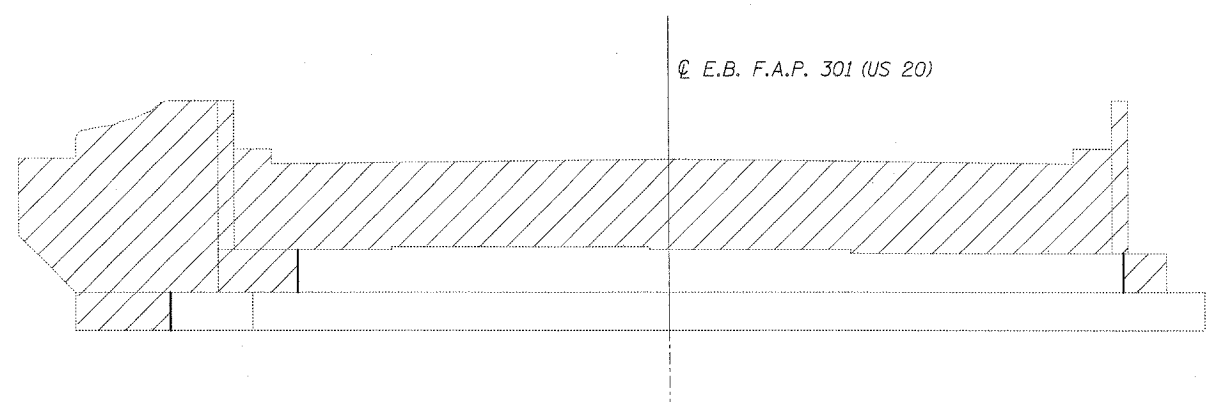


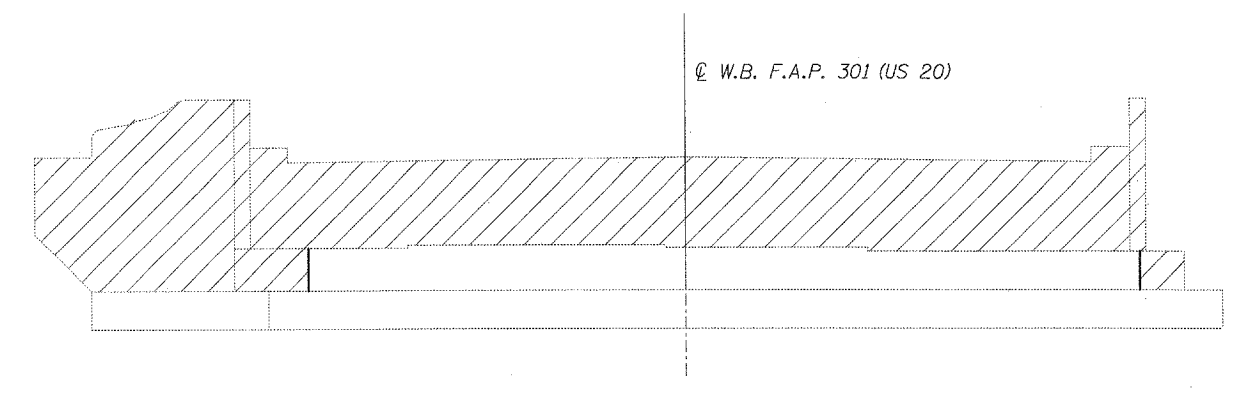
STATE OF ILLINOIS
DEPARTMENT OF TRANSPORTATION

| | | | | | |
|-----------------------|--------------|-------------------|--------------|-----------|---------------------------|
| ROUTE NO. | SECTION | COUNTY | TOTAL SHEETS | SHEET NO. | SHEET NO. 19 34 SHEETS |
| F.A.P. 301 (US 20) | (2HB -1D) | WINNEBAGO | 107 | 84 | |
| FED. ROAD DIST. NO. 7 | | ILLINOIS | | | |
| | | FED. AID PROJECT- | | | |

Contract #64B07

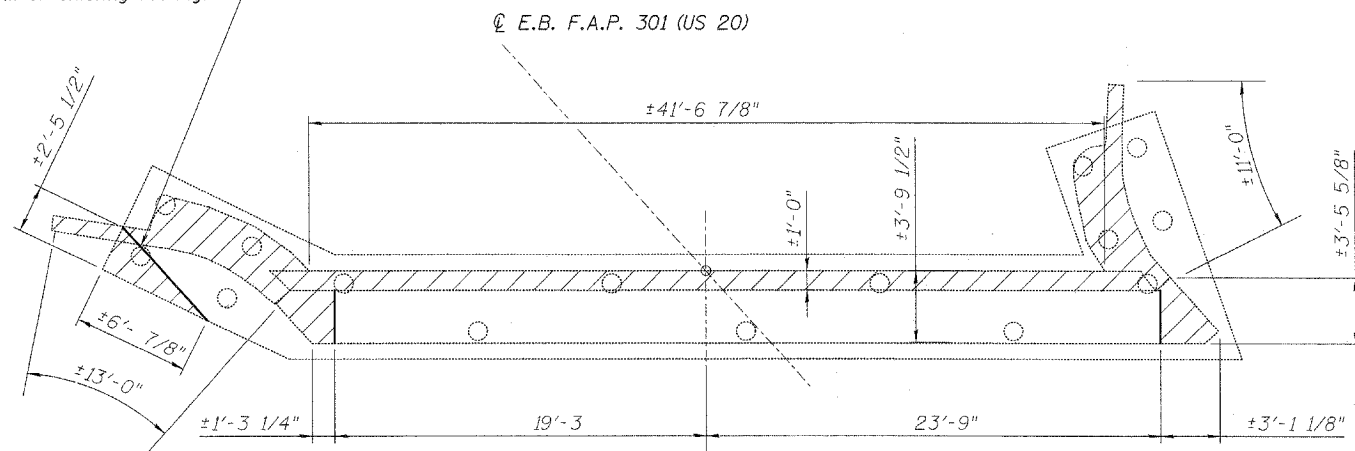


ELEVATION - STAGE II REMOVAL



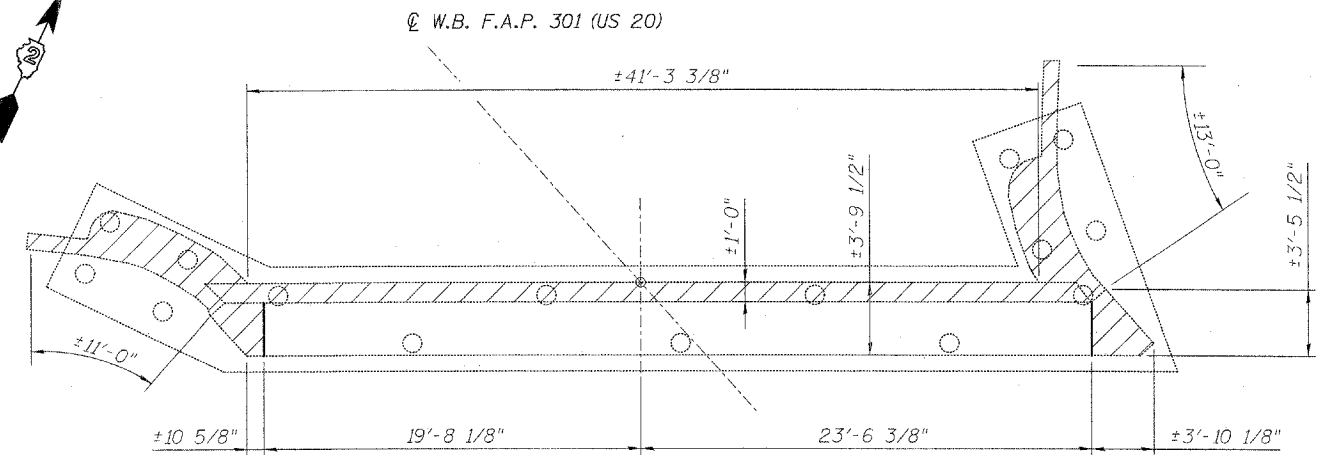
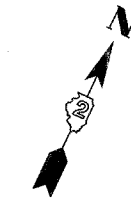
ELEVATION - STAGE I REMOVAL

Partial removal of top of existing concrete pile required. Chip down to bottom of existing footing.



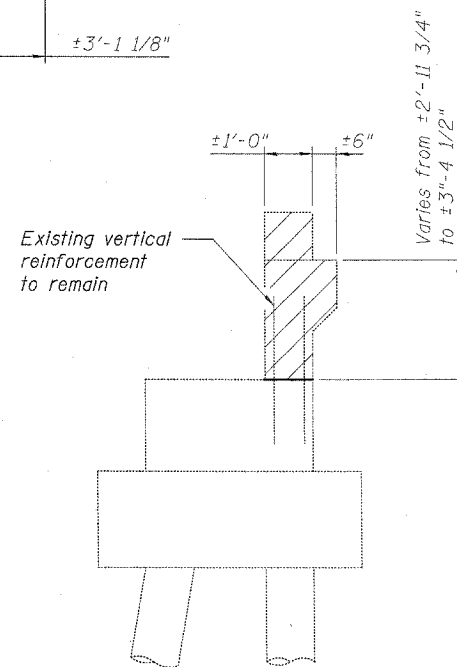
PLAN - STAGE II REMOVAL

WEST ABUTMENT (E.B. US 20)



PLAN - STAGE I REMOVAL

WEST ABUTMENT (W.B. US 20)



SECTION THRU ABUTMENTS

NOTES:

Hatch areas indicate removal. These areas include the wing walls down to the top of the existing footing, the abutment backwall to the top of the bearing seat and portions of the bearing seat and footing. In addition, partial removal of the top of the existing concrete pile indicated may also be required.

Existing vertical reinforcement extending into removed areas shall be cleaned, straightened and incorporated into new construction. Cost included with Concrete Removal.

Existing reinforcement not extending into new construction shall be cut off flush with existing concrete and sealed with a layer of epoxy. Cost included with Concrete Removal.

| | |
|----------|-----|
| DESIGNED | SSM |
| CHECKED | JLA |
| DRAWN | GYR |
| CHECKED | SSM |

TWO ABUTMENTS
BILL OF MATERIAL

| ITEM | UNIT | TOTAL |
|------------------|---------|-------|
| Concrete Removal | Cu. Yd. | 70.1 |

WEST ABUTMENT
CONCRETE REMOVAL DETAILS

F.A.P. ROUTE 301 (US 20)

OVER SIMPSON ROAD

SECTION (2HB-1D)

WINNEBAGO COUNTY

STATION 849+27.97

STRUCTURE NO. 101-0053 (W.B.)

STRUCTURE NO. 101-0054 (E.B.)