

F.A.P. RTE.	SECTION	COUNTY	TOTAL SHEETS	SHEET NO.
41	(14BR)MCHD	KANKAKEE	6	1
ILLINOIS				

CONTRACT NO. 66721

D-93-032-07



LOCATION OF SECTION INDICATED THUS: - [black bar] -

FUNCTIONAL CLASSIFICATION
 RURAL - MINOR ARTERIAL
 F.A.P. ROUTE 41 (IL 17)
 2005 ADT = 2950
 P.V. = 68.0% M.U. = 24.0% S.U. = 8.0%

STATE OF ILLINOIS
 DEPARTMENT OF TRANSPORTATION
 DIVISION OF HIGHWAYS

SUBMITTED 7/12/07
[Signature]
 DEPUTY DIRECTOR OF HIGHWAYS, REGION ENGINEER

August 17, 2007
[Signature]
 ENGINEER OF DESIGN AND ENVIRONMENT

August 17, 2007
[Signature]
 DIRECTOR OF HIGHWAYS, CHIEF ENGINEER

PRINTED BY THE AUTHORITY
 OF THE STATE OF ILLINOIS

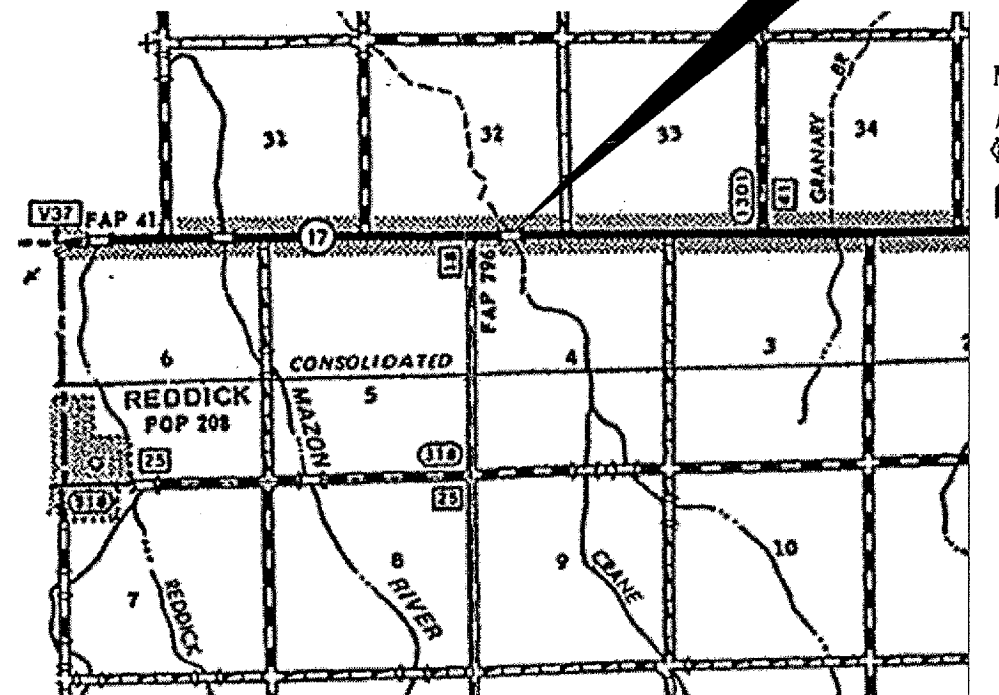
STATE OF ILLINOIS
 DEPARTMENT OF TRANSPORTATION
 DIVISION OF HIGHWAYS
**PROPOSED
 HIGHWAY PLANS**

FAP ROUTE 41 (IL 17)
 SECTION (14BR)MCHD

KANKAKEE COUNTY
 C-93-074-07
 BRIDGE REPAIR

PROJECT LOCATION

SN 046-0132
 FAP 41 (IL 17) OVER CRANE CREEK
 2.0 MILES EAST OF REDDICK



LOCATION MAP

NOT TO SCALE
 POINT LOCATION

INDEX OF SHEETS

- COVER SHEET
- GENERAL NOTES
- SUMMARY OF QUANTITIES
- TYPICAL SECTION
- GENERAL PLAN AND ELEVATION
- PARAPET DETAILS

STANDARDS

- 000001-04 STANDARD SYMBOLS, ABBREVIATIONS AND PATTERNS
- 001001-01 AREAS OF REINFORCEMENT BARS
- 001006 DECIMAL OF AN INCH AND OF A FOOT
- 630001-07 STEEL PLATE BEAM GUARDRAIL, TYPE A
- 631031-06 TRAFFIC BARRIER TERMINAL, TYPE 6
- 635006-02 REFLECTOR AND TERMINAL MARKER PLACEMENT
- 635011-01 REFLECTOR MARKER AND MOUNTING DETAILS
- 701001-01 OFF-ROAD OPERATIONS 2L, 2W, MORE THAN 4.5 m (15') AWAY
- 701006-02 OFF-ROAD OPERATIONS 2L, 2W, 4.5 m (15') TO 600 mm (24") FROM PAVEMENT EDGE
- 701201-02 LANE CLOSURE, 2L, 2W, DAY ONLY, FOR SPEEDS ≥ 45 MPH
- 702001-06 TRAFFIC CONTROL DEVICES

MICROFILMED _____
 REEL NUMBER _____
 AWARDED _____
 RESIDENT ENGINEER _____
 AS BUILT CHANGES WERE MADE
 ON THE FOLLOWING SHEETS _____

J.U.L.I.E.
 JOINT UTILITY LOCATION INFORMATION FOR EXCAVATION
 DIAL 811 OR 1-800-892-0123

DISTRICT 3 NO. (815) 434-6131

PROJECT ENGINEER: JOE KANNEL
 UNIT CHIEF: RON WOODSHANK
 TOWNSHIP: ESSEX

CONTRACT NO. 66721

F.A.P. RTE.	SECTION	COUNTY	TOTAL SHEETS	SHEET NO.
41	(14BR)MCHD	KANKAKEE	6	2
ILLINOIS				

CONTRACT NO. 66721

GENERAL NOTES

PLAN DIMENSIONS AND DETAILS RELATIVE TO EXISTING PLANS ARE SUBJECT TO ROUTINE VARIATIONS. THE CONTRACTOR SHALL FIELD VERIFY EXISTING DIMENSIONS AND DETAILS AFFECTING NEW CONSTRUCTION AND MAKE NECESSARY APPROVED ADJUSTMENTS PRIOR TO CONSTRUCTION OR ORDERING OF MATERIALS. SUCH VARIATIONS SHALL NOT BE CAUSE FOR ADDITIONAL COMPENSATION FOR A CHANGE IN THE SCOPE OF THE WORK. HOWEVER, THE CONTRACTOR WILL BE PAID FOR THE QUANTITY FURNISHED BASED UPON THE UNIT BID PRICE FOR THE WORK.

EXISTING REINFORCEMENT BARS EXTENDING INTO REMOVAL AREA SHALL BE CLEANED, STRAIGHTENED AND INCORPORATED INTO THE NEW CONSTRUCTION. ANY REINFORCEMENT BARS THAT ARE DAMAGED DURING CONCRETE REMOVAL SHALL BE REPLACED WITH AN APPROVED BAR SPLICER OR ANCHORAGE SYSTEM. COST INCLUDED IN THE COST OF CONCRETE REMOVAL.

FOR STABILIZATION, ALL TYPE III BARRICADES SHALL REQUIRE A MINIMUM OF FOUR SAND BAGS PER BARRICADE.

THE CONTRACTOR SHALL BE RESPONSIBLE FOR PROTECTING UTILITY PROPERTY FROM CONSTRUCTION OPERATIONS AS OUTLINED IN ARTICLE 107.31 OF THE STANDARD SPECIFICATIONS. THE "JULIE" NUMBER IS 811 OR 1-800-892-0123. A MINIMUM OF FORTY-EIGHT (48) HOURS ADVANCE NOTICE IS REQUIRED.

THE COST OF ANY SAW CUTS MADE TO COMPLETE THE WORK AS DESCRIBED IN PLAN DETAILS, UNLESS OTHERWISE NOTED SHALL NOT BE PAID FOR SEPARATELY BUT SHALL BE INCLUDED WITH THE VARIOUS REMOVAL PAY ITEMS INVOLVED.

WHERE SECTION OR SUBSECTION MONUMENTS ARE ENCOUNTERED, THE ENGINEER SHALL BE NOTIFIED BEFORE SUCH MONUMENTS ARE REMOVED. THE CONTRACTOR SHALL PROTECT AND CAREFULLY PRESERVE ALL MONUMENTS UNTIL AN AUTHORIZED SURVEYOR OR AGENT HAS WITNESSED OR OTHERWISE REFERENCED THEIR LOCATION. THE CONTRACTOR SHALL BE RESPONSIBLE FOR HAVING AN AUTHORIZED SURVEYOR REESTABLISH ANY SECTION OR SUBSECTION MONUMENTS DESTROYED BY HIS OPERATIONS.

ANY REFERENCE TO A STANDARD IN THESE PLANS SHALL BE INTERPRETED TO MEAN THE EDITION AS INDICATED BY THE SUBNUMBER LISTED ON THE INDEX OF SHEETS OR THE COPY OF THE STANDARD INCLUDED IN THESE PLANS.

REINFORCEMENT BARS SHALL CONFORM TO THE REQUIREMENTS OF ASTM A 706 GR 60 (IL MODIFIED). SEE SPECIAL PROVISIONS.

REINFORCEMENT BARS DESIGNATED (E) SHALL BE EPOXY COATED.

DATE: 7/11/2007

PREPARED BY: [Signature]
DISTRICT STUDIES & PLANS ENGINEER

EXAMINED BY: [Signature]
DISTRICT CONSTRUCTION ENGINEER

[Signature]
DISTRICT MATERIALS ENGINEER

[Signature]
DISTRICT OPERATIONS ENGINEER

REVISIONS	
NAME	DATE

ILLINOIS DEPARTMENT OF TRANSPORTATION
GENERAL NOTES
 FAP ROUTE 41 (IL ROUTE 17)
 SECTION (14BR)MCHD
 KANKAKEE COUNTY
 STA. 652+20.15
 S.N. 046-0132

DATE: 05/08/2007
C:/PROJECTS/MCHD07/0460132/0460132.DGN

F.A.P. RTE.	SECTION	COUNTY	TOTAL SHEETS	SHEET NO.
41	(14BR)MCHD	KANKAKEE	6	3
ILLINOIS				

CONTRACT NO. 66721

SUMMARY OF QUANTITIES

CONSTRUCTION CODE TYPE: SFTY-2A

RURAL
100% STATE
MCHD #723835

CODE NO.	ITEM	UNIT	TOTAL QUANTITY
50102400	CONCRETE REMOVAL	CU YD	0.4
50300255	CONCRETE SUPERSTRUCTURE	CU YD	0.4
50800205	REINFORCEMENT BARS, EPOXY COATED	POUND	30
63000000	STEEL PLATE BEAM GUARDRAIL, TYPE A	FOOT	25
63100085	TRAFFIC BARRIER TERMINAL, TYPE 6	EACH	1
63100169	TRAFFIC BARRIER TERMINAL TYPE 1, SPECIAL (FLARED)	EACH	1
63200305	STEEL PLATE BEAM GUARD RAIL REMOVAL	FOOT	112
78200410	GUARDRAIL MARKERS, TYPE A	EACH	5
78201000	TERMINAL MARKER - DIRECT APPLIED	EACH	1
67100100	MOBILIZATION	L SUM	1
70100450	TRAFFIC CONTROL AND PROTECTION, STANDARD 701201	L SUM	1

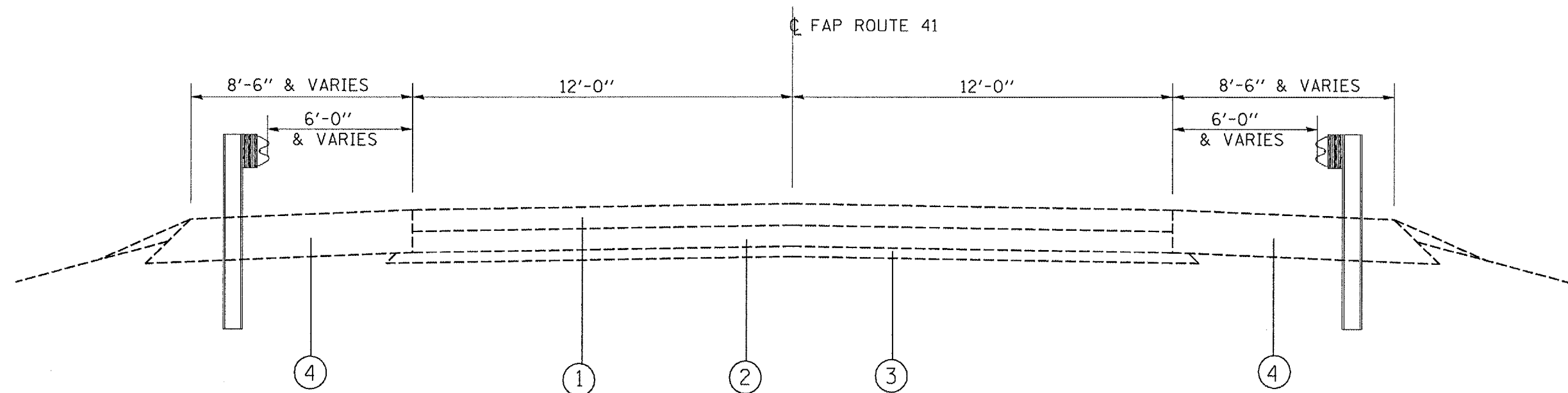
REVISIONS	
NAME	DATE

ILLINOIS DEPARTMENT OF TRANSPORTATION
SUMMARY OF QUANTITIES
FAP ROUTE 41 (IL ROUTE 17)
SECTION (14BR)MCHD
KANKAKEE COUNTY
STA. 652+20.15
S.N. 046-0132

DATE: 05/08/2007
C:/PROJECTS/MCHD07/0460132/0460132.DGN

F.A.P. RTE.	SECTION	COUNTY	TOTAL SHEETS	SHEET NO.
41	(14BR)MCHD	KANKAKEE	6	4
ILLINOIS				

CONTRACT NO. 66721



TYPICAL SECTION

LEGEND

- ① HOT-MIX ASPHALT OVERLAY ±8"
- ② P.C.C. PAVEMENT 8"
- ③ AGGREGATE BASE CSE. 4"
- ④ HOT-MIX ASPHALT SHOULDERS ±16"

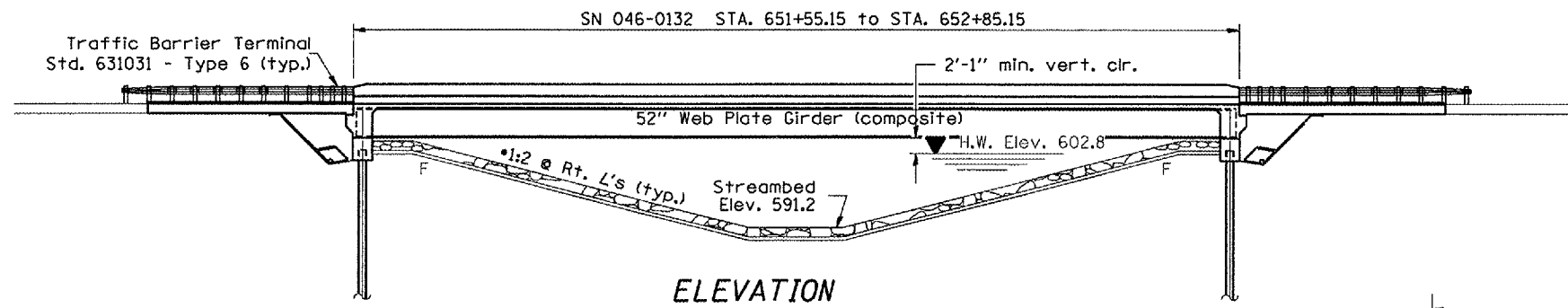
REVISIONS	
NAME	DATE

ILLINOIS DEPARTMENT OF TRANSPORTATION
TYPICAL SECTION
 FAP ROUTE 41 (IL ROUTE 17)
 SECTION (14BR)MCHD
 KANKAKEE COUNTY
 STA. 652+20.15
 S.N. 046-0132

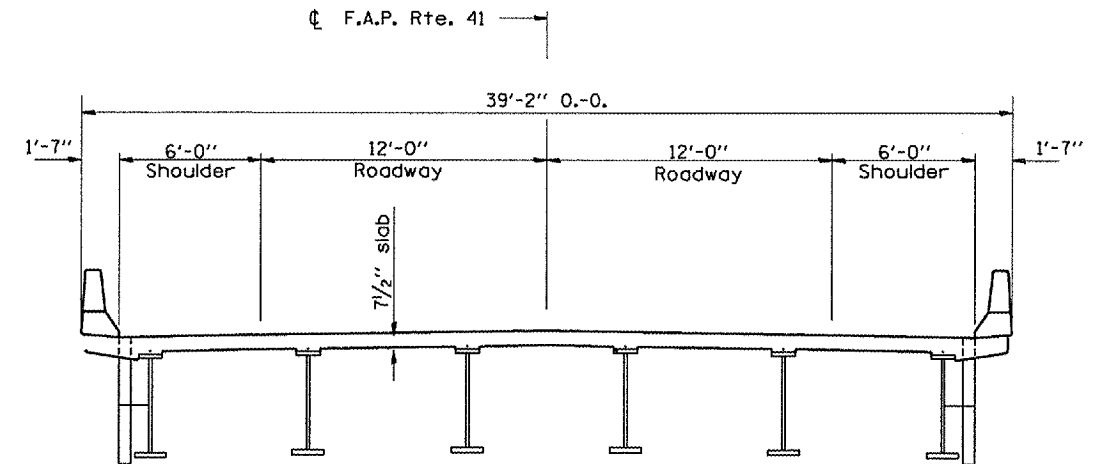
DATE: 05/08/2007
C:/PROJECTS/MCHD07/0460132/0460132.DGN

F.A.P. RTE.	SECTION	COUNTY	TOTAL SHEETS	SHEET NO.
41	(14BR)MCHD	KANKAKEE	6	5
ILLINOIS				

CONTRACT NO. 66721

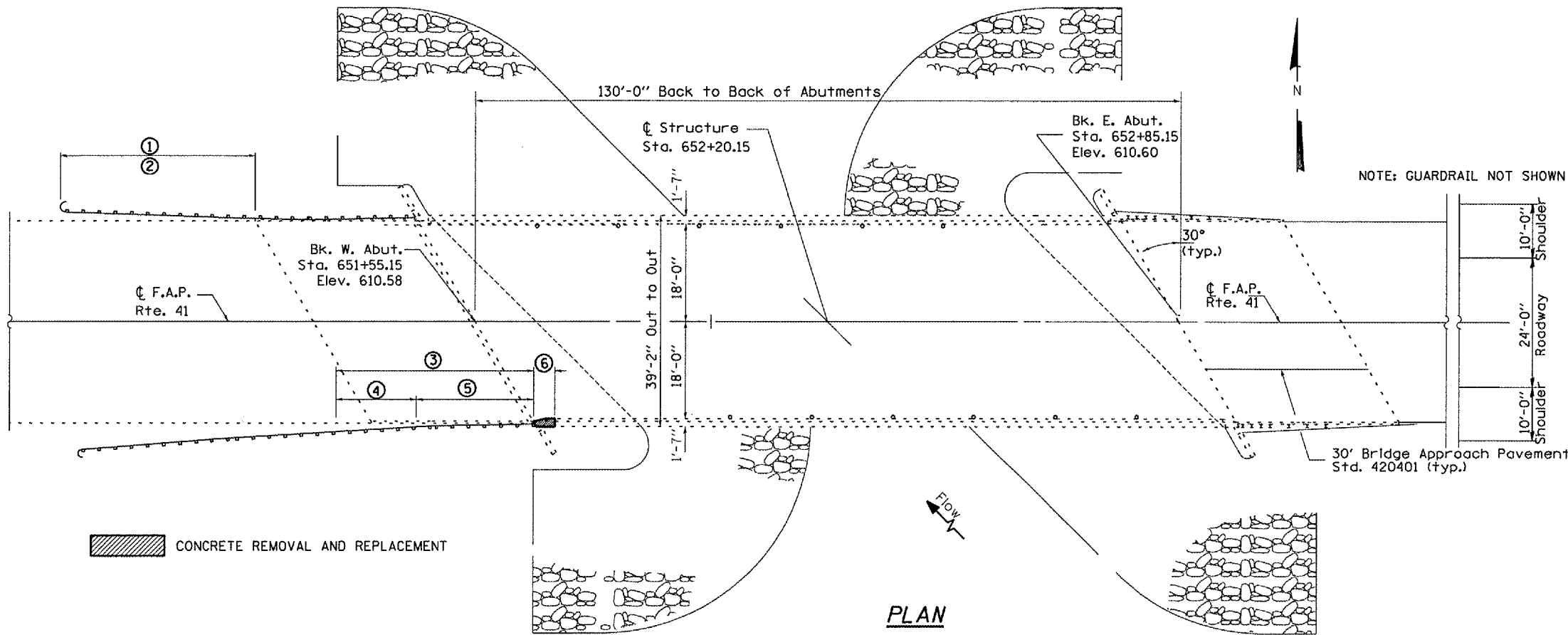


ELEVATION



CROSS SECTION
LOOKING EAST

- LEGEND**
- ① 50 FEET OF GUARDRAIL REMOVAL
 - ② INSTALL TBT TYPE 1 (SPECIAL) FLARED
 - ③ 62 FEET OF GUARDRAIL REMOVAL
 - ④ INSTALL 25 FEET STEEL PLATE BEAM GUARDRAIL, TYPE A
 - ⑤ INSTALL TRAFFIC BARRIER TERMINAL, TYPE 6
 - ⑥ REMOVE AND REPLACE 4'-0" BRIDGE PARAPET WALL



PLAN

TOTAL BILL OF MATERIALS

ITEM	UNIT	TOTAL
CONCRETE REMOVAL	CU YD	0.4
REINFORCEMENT BARS, (EPOXY COATED)	POUND	30
CONCRETE SUPERSTRUCTURE	CU YD	0.4

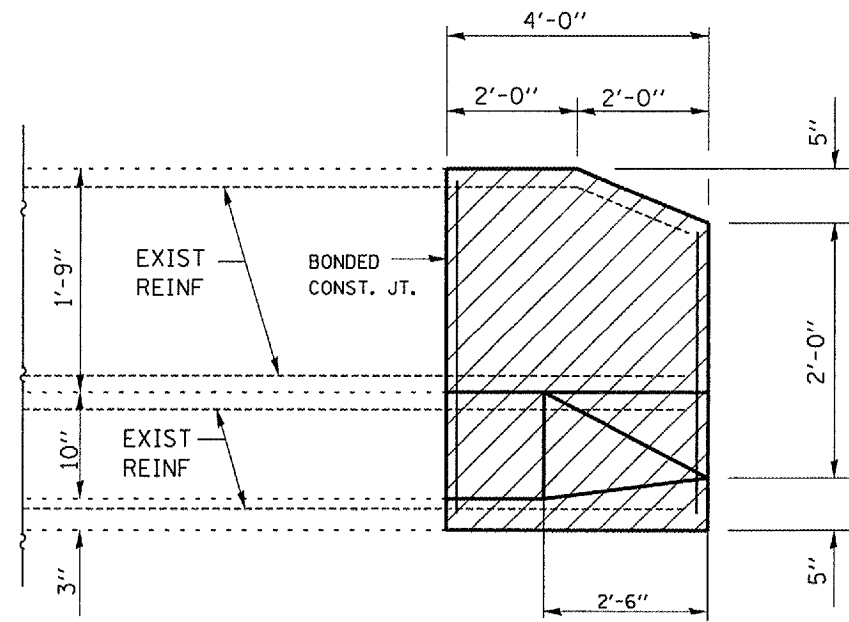
REVISIONS	
NAME	DATE

ILLINOIS DEPARTMENT OF TRANSPORTATION
GENERAL PLAN & ELEVATION
 FAP ROUTE 41 (IL ROUTE 17)
 SECTION (14BR)MCHD
 KANKAKEE COUNTY
 STA. 652+20.15
 S.N. 046-0132

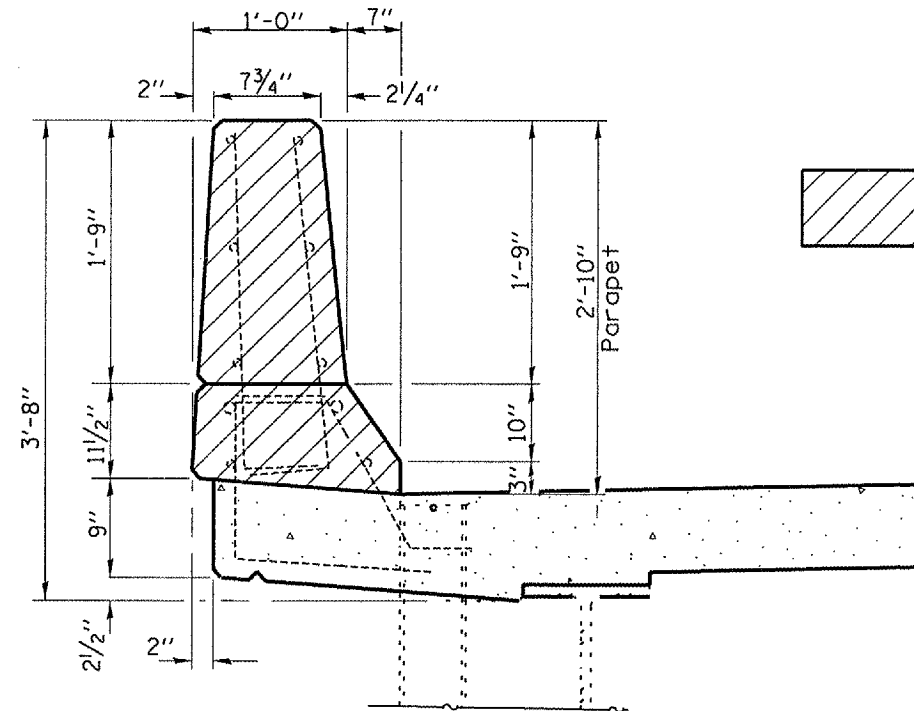
DATE: 05/08/2007
C:\PROJECTS\MCHD07\0460132\0460132.DGN

F.A.P. RTE.	SECTION	COUNTY	TOTAL SHEETS	SHEET NO.
41	(14BR)MCHD	KANKAKEE	6	6
ILLINOIS				

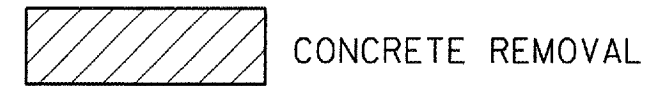
CONTRACT NO. 66721



INSIDE ELEVATION OF PARAPET

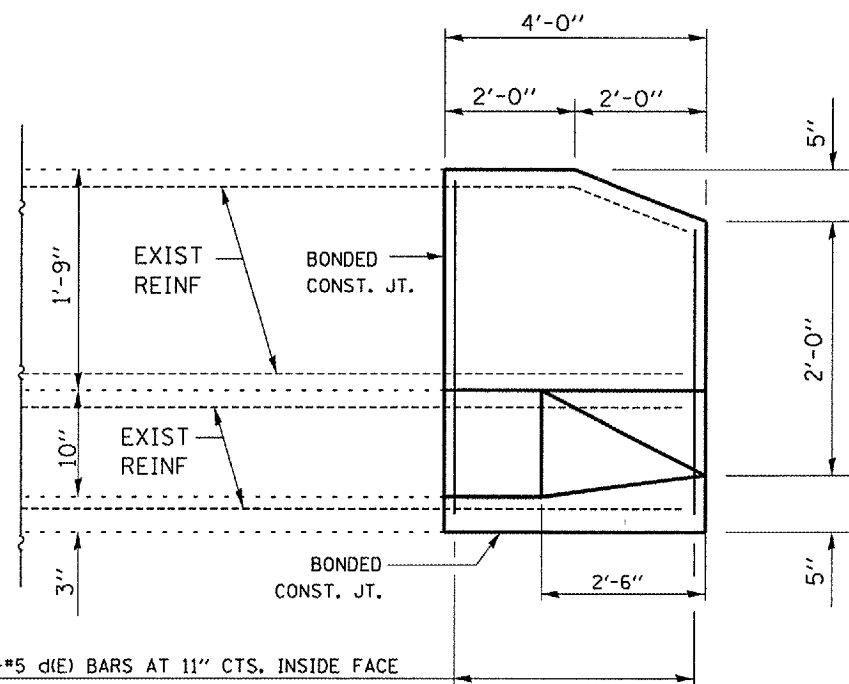


SECTION THRU PARAPET

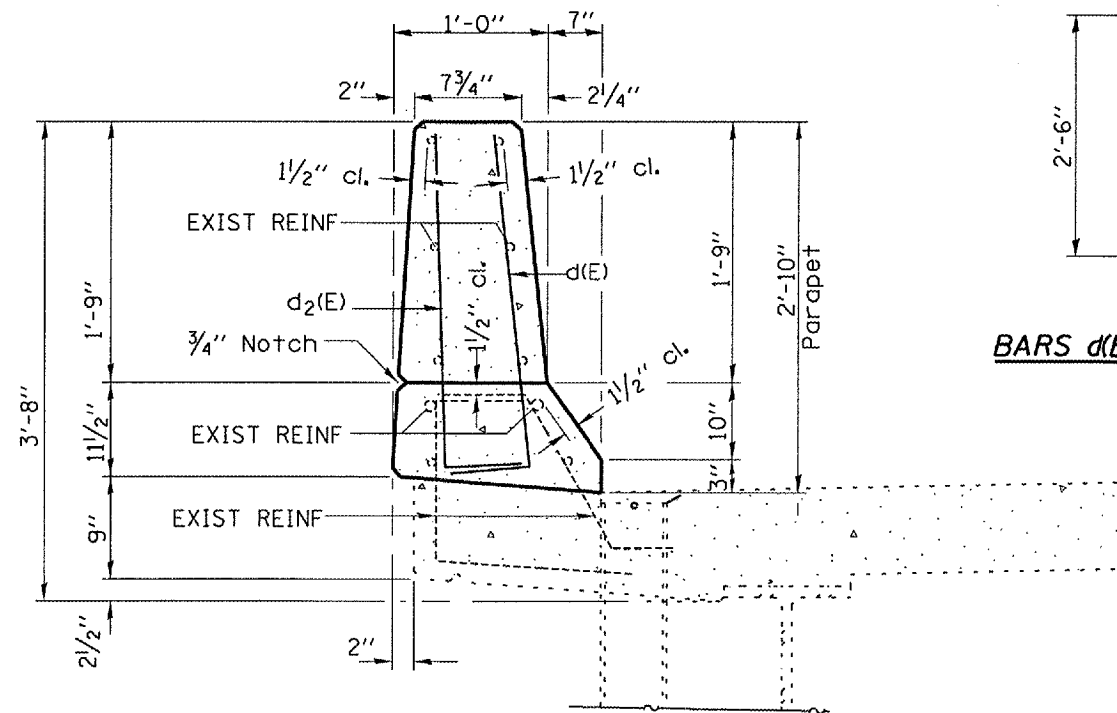


**SUPERSTRUCTURE
BILL OF MATERIAL**

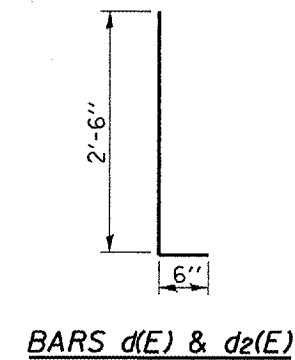
CONCRETE REMOVAL	Cu. Yds.	0.4
------------------	----------	-----



INSIDE ELEVATION OF PARAPET



SECTION THRU PARAPET



**SUPERSTRUCTURE
BILL OF MATERIAL**

Bar	No.	Size	Length	Shape
d(E)	5	#5	3'-0"	—
d ₂ (E)	5	#4	3'-0"	—
REINFORCEMENT BARS EPOXY COATED			Pound	30
CONCRETE SUPERSTRUCTURE			Cu. Yds.	0.4

REINFORCEMENT BARS DESIGNATED (E) SHALL BE EPOXY COATED.

DATE: 05/08/2007 C:\PROJECTS\MCHD07\0460132\0460132.DGN

5-#5 d(E) BARS AT 11" CTS, INSIDE FACE
5-#4 d₂(E) BARS AT 12" CTS, OUTSIDE FACE

REVISIONS	
NAME	DATE

ILLINOIS DEPARTMENT OF TRANSPORTATION
PARAPET DETAILS
FAP ROUTE 41 (IL ROUTE 17)
SECTION (14BR)MCHD
KANKAKEE COUNTY
STA. 652+20.15