

Benchmark: Chiseled "□" on N.E. Wingwall of S.N. 090-0053 at Sta. 167+32 Elev. 527.57

Existing Structure: S.N. 090-0053. Built as S.B.I. 24, Section H,1 (W,RS) in 1961. The superstructure consists of a reinforced concrete deck supported by steel wide flange beams. The structure length is 132'-8" Bk.-Bk. Abutments and 33'-8" Out.-Out. Deck. The substructure consists of reinforced concrete pile bent piers and pile bent abutments.

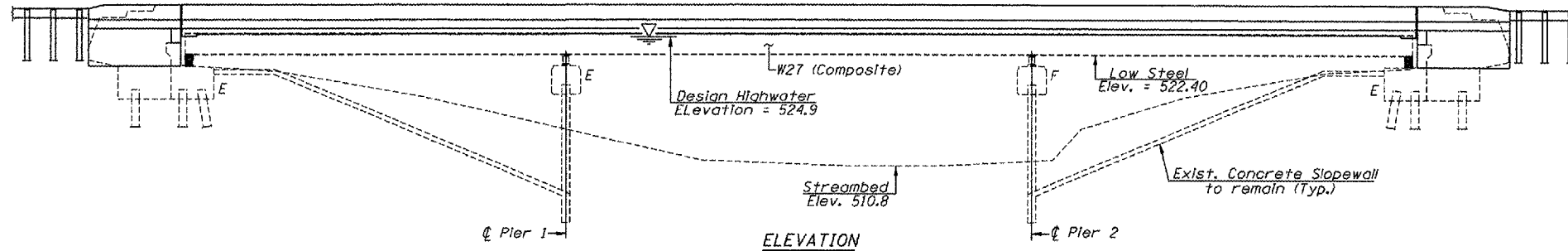
One lane of traffic shall be maintained using Stage Construction.
No salvage.

STATE OF ILLINOIS
DEPARTMENT OF TRANSPORTATION

ROUTE NO.	SECTION	COUNTY	TOTAL SHEETS	SHEET NO.
F.A.P. 656	(11)	TAZEWELL	32	12
FED. ROAD DIST. NO. 4 ILLINOIS		FED. AID PROJECT		

CONTRACT NO. 68024

SHEET NO. 1
OF 18 SHEETS



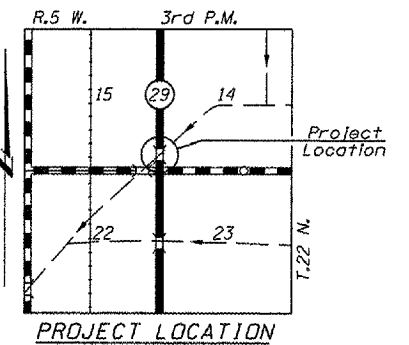
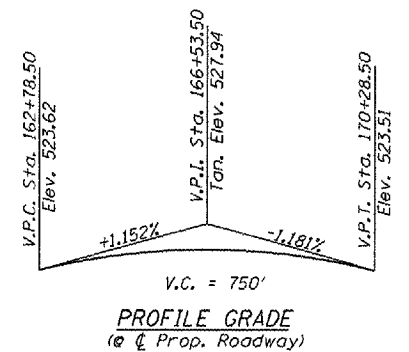
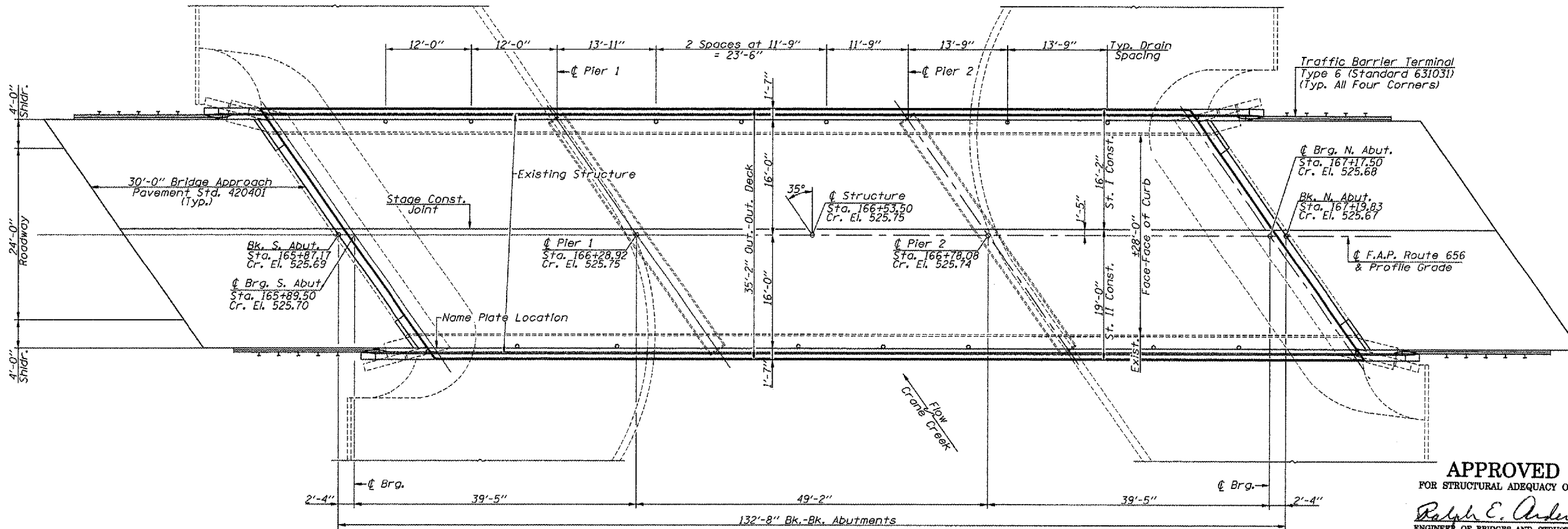
SEISMIC DATA
Seismic Performance Category = A
Bedrock Acceleration Coefficient = 0.04g
Site Coefficient = 1.20

DESIGN SPECIFICATIONS
2002 A.A.S.H.T.O. Specifications with 2003 Interim Specifications.

LOADING HS 20-44
No Future Wearing Surface is allowed.

DESIGN STRESSES

FIELD UNITS
f'c = 3500 psi
fy = 60000 psi (Reinf.)
fy = 36000 psi (A-36) (Existing Structural Steel)



APPROVED
FOR STRUCTURAL ADEQUACY ONLY
Ralph E. Anderson
ENGINEER OF BRIDGES AND STRUCTURES



Mark A. Henderson 4/27/07
EXPIRATION DATE 11/30/08

STA. 166+53.50
BUILT 200. BY
STATE OF ILLINOIS
F.A.P. ROUTE 656 - SECTION (1)BR
LOADING HS 20-44
STR. NO. 090-0053

NAME PLATE
(Refer to Standard 515001)

Note: Clean and relocate existing name plate adjacent to new name plate. Cost included with Name Plates.

WATERWAY INFORMATION

Drainage Area = 38.9 mi ²		Low Grade Elev. = 520.5 ft.		⊕ Sta. 174+00					
Flood	Freq. Yr.	0	Opening ft. ²		Head - ft.		Headwater El.		
			Exist.	Prop.	H.W.E.	Exist.	Prop.	Exist.	Prop.
Design	50	5860	655	655	524.9	0.2	0.2	525.1	525.1
Base	100	6800	655	655	525.3	0.2	0.2	525.5	525.5
Overtopping	20	4500	655	655	524.5	0.1	0.1	524.6	524.6
Max. Calc.									

DESIGNED - MAH
CHECKED - APH
DRAWN - JRP
CHECKED - MAH