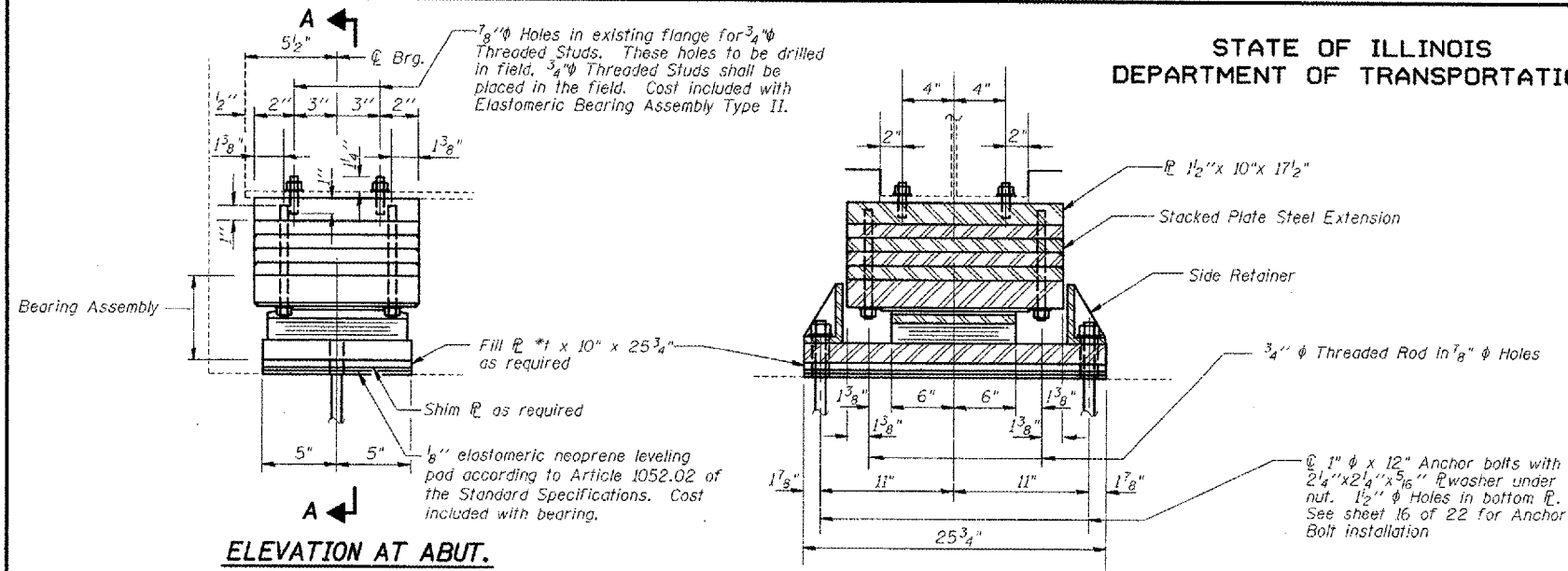


ROUTE NO.	SECTION	COUNTY	SHEETS	SHEET	SHEET NO.
F.A.S. 220	*	Mercer	50	27	15
FED. AID DIST. NO. 7					SHEETS 23
ILLINOIS					
FED. AID FINANCE					

STATE OF ILLINOIS
DEPARTMENT OF TRANSPORTATION



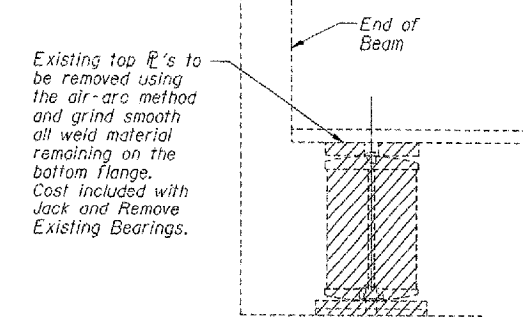
ELEVATION AT ABUT.

SECTION A-A

TYPE II ELASTOMERIC EXP. BRG.

*FILL PLATE THICKNESS (t)

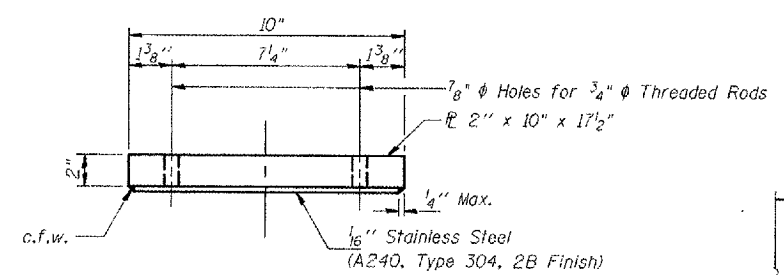
BEAM	S. ABUT	N. ABUT
1	—	—
2	—	—
3	1/2"	1/2"
4	1/2"	1/2"
5	—	—
6	—	—



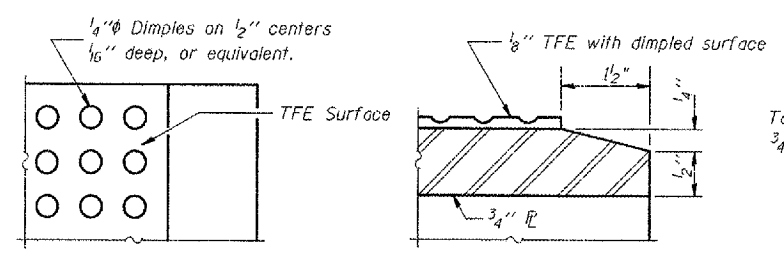
Burn the existing anchor bolts flush with existing concrete surface. Grind existing anchor bolts smooth and seal with epoxy. Cost is included with Jack and Remove Existing Bearings.

JACK AND REMOVE EXISTING BEARING PROCEDURE

- See Special Provision "Jack and Remove Existing Bearings."
- The Contractor shall submit for approval by the Engineer, plans for lifting existing beams and installing new bearings prior to commencing any related work. This work shall be done after existing concrete deck is removed and prior to pouring of the new concrete deck. The maximum dead load reaction per beam (weight of steel only) is 5.0 k. Min. jack capacity shall be 10.0 k.
- Prior to ordering any material, the Contractor shall verify steel extension and shim plate thicknesses required at each bearing.
- The bottom flange of the existing beam shall be cleaned as specified for Structural Steel.
- The new bearings and steel extensions shall be in place and the jacks shall be lowered before the new concrete deck is poured.



TOP BEARING ASSEMBLY

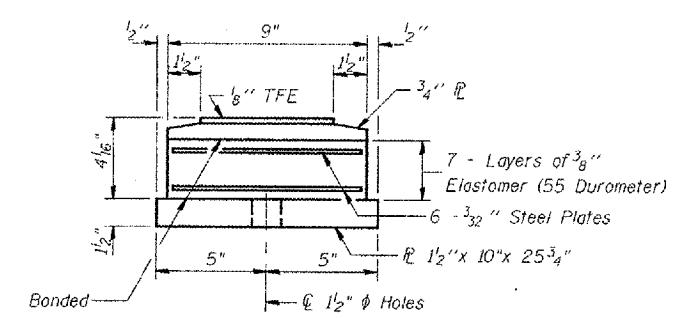


PLAN-TFE SURFACE

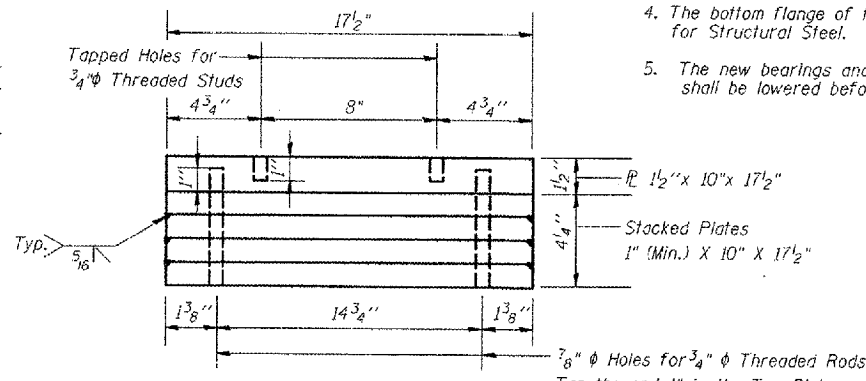
SECTION THRU TFE

Note: The 1/8" TFE sheet shall be bonded directly to the top steel plate with a two-component, medium viscosity epoxy resin, conforming to the requirements of the Federal Specification MMM-A-134, Type I. The bond agent shall be applied on the full area of the contact surfaces.

Bonding of 1/8" TFE sheet during vulcanizing process will be permitted provided the process and method of adjusting assembly height is approved by the Engineer.



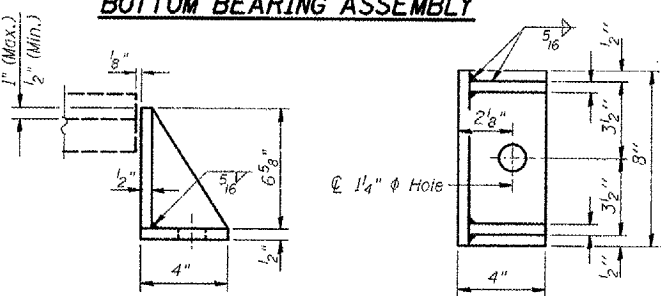
BOTTOM BEARING ASSEMBLY



END VIEW STEEL EXTENSION

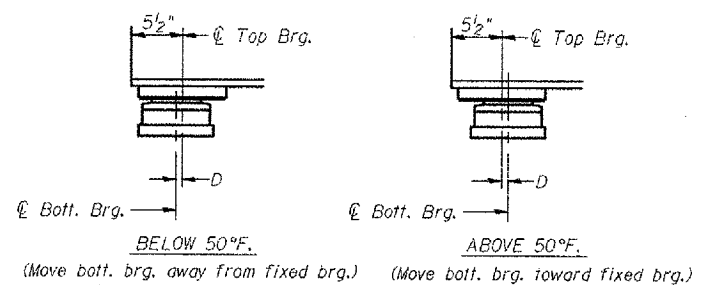
BILL OF MATERIAL

Item	Unit	Total
Elastomeric Bearing Assembly, Type II	Each	12
Jack and Remove Existing Bearings	Each	12



SIDE RETAINER

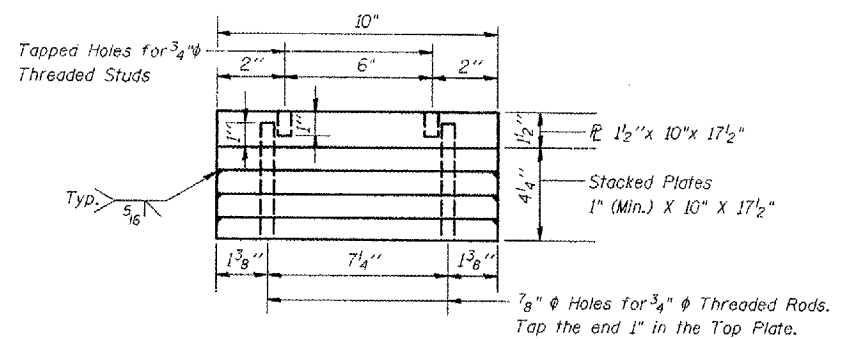
Equivalent rolled angle with stiffeners will be allowed in lieu of welded plates. Weight included with Furnishing & Erecting Structural Steel.



SETTING ANCHOR BOLTS AT EXP. BRG.

D=1/8" per each 100' of expansion for every 15° temp. change from the normal temp. of 50°F.

Note: Cost for new steel stacked plates, side retainers, connection bolts, fill plates, shim plates, and anchor bolts is included with Furnishing and Erecting Structural Steel.



ELEVATION STEEL EXTENSION

BEARING DETAILS AT ABUTMENTS
F.A.S. ROUTE 220 (IL ROUTE 94)
OVER EDWARDS RIVER
SECTION (23-BR) I
MERCER COUNTY
STRUCTURE NO. 066-0008
STATION 104+73.75

DESIGNED	K.E. Brandau
CHECKED	R.T. Mumm
DRAWN	L.A. Rolf
CHECKED	K.E. Brandau