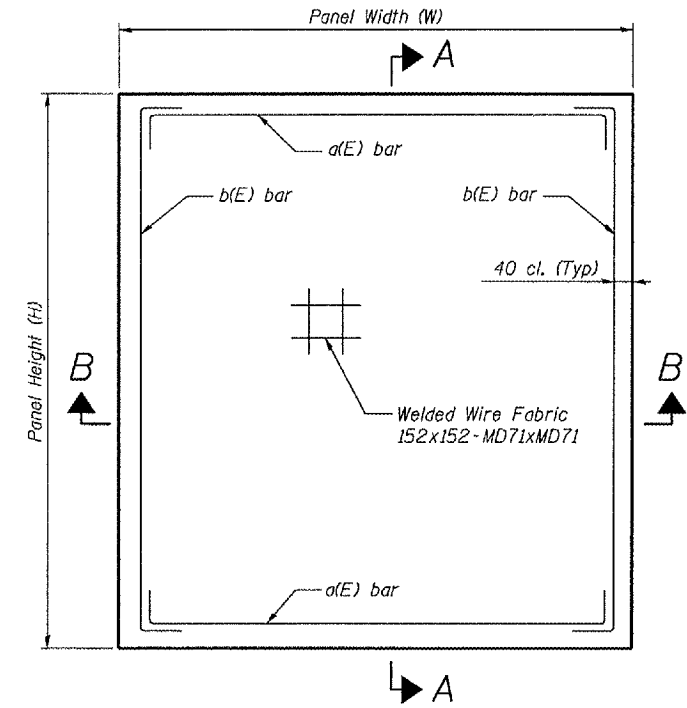
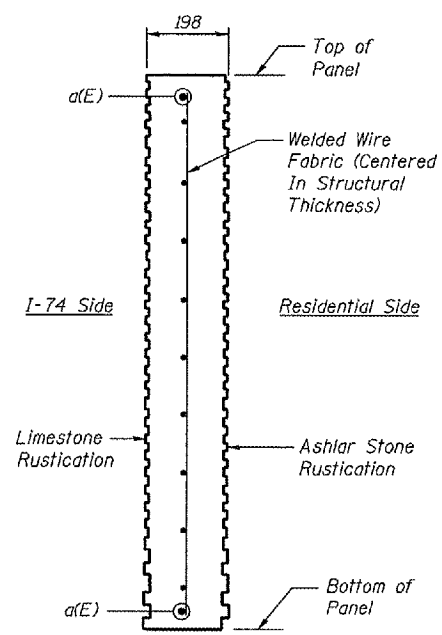


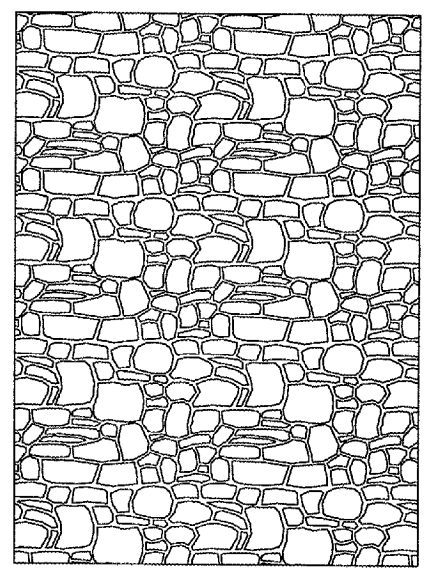
SECTION B-B



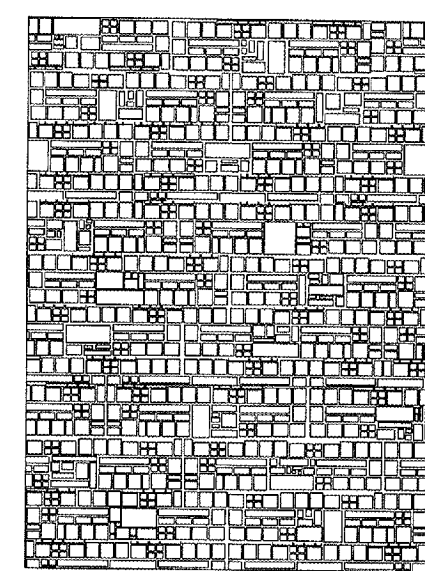
TYPICAL INTERIOR PANEL
I-74 Side



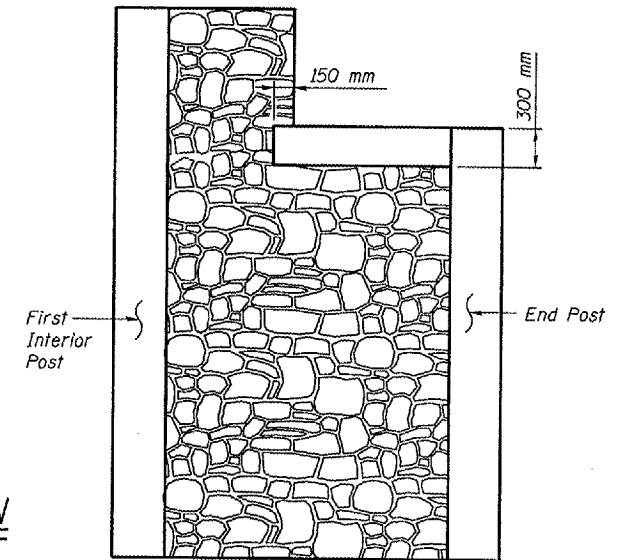
SECTION A-A



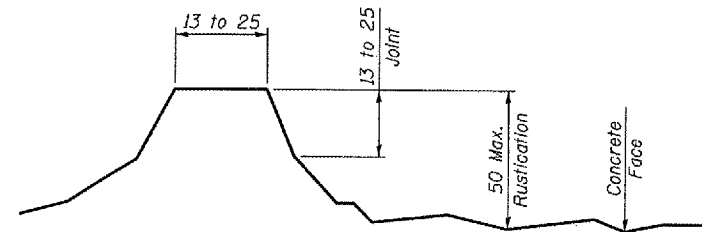
LIMESTONE RUSTICATION ARCHITECTURAL TREATMENT
(I-74 Side)



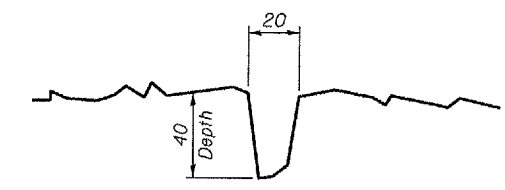
ASHLAR STONE RUSTICATION ARCHITECTURAL TREATMENT
(Residential Side)



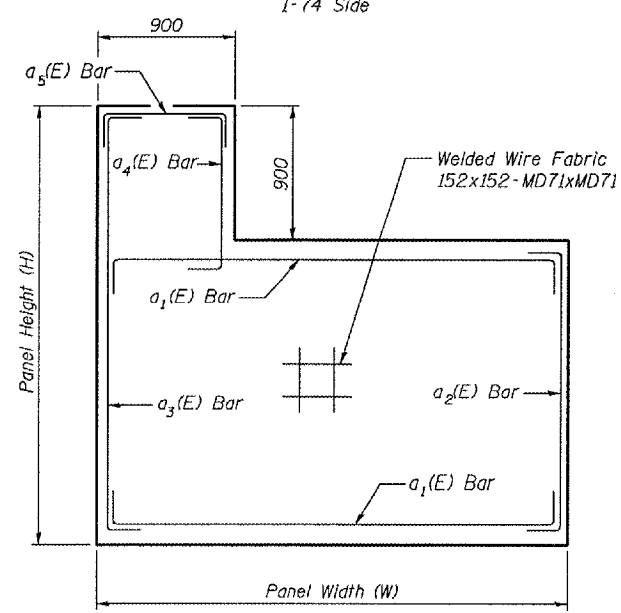
END PANEL (WITH POSTS)
(Limestone rustication shown, Ashlar Stone rustication similar.)



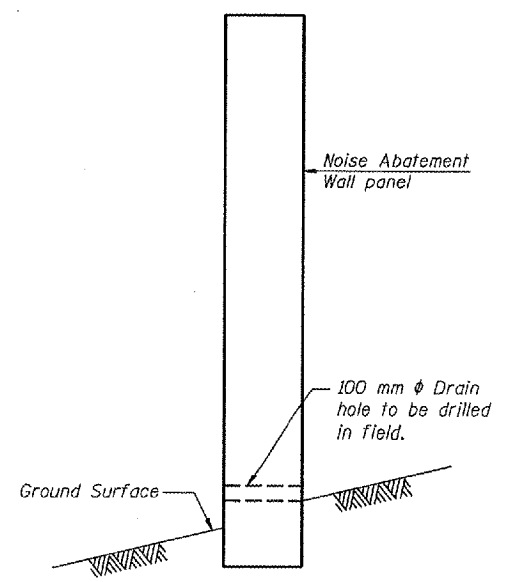
LIMESTONE RUSTICATION DETAIL
(I-74 Side)



ASHLAR STONE RUSTICATION DETAIL
(Residential Side)



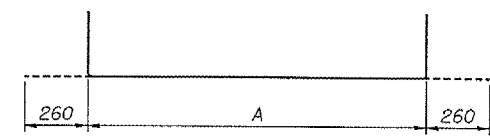
TYPICAL END PANEL



DRAIN HOLE DETAIL

TABLE OF DIMENSIONS

MARK	A (m)	SIZE	LENGTH (m)	SHAPE
Interior Panel				
a(E)	(W-0.1)	#15	(W+0.42)	┌───┐
b(E)	(H-0.08)	#15	(H+0.44)	└───┘
Welded Wire Fabric	as Noted	as Noted	as Noted	Grid
End Panel				
a1(E)	(W-0.1)	#15	(W+0.42)	┌───┐
a2(E)	(H-0.98)	#15	(H-0.46)	└───┘
a3(E)	(H-0.1)	#15	(H+0.42)	┌───┐
a4(E)	0.90	#15	1.42	┌───┐
a5(E)	0.82	#15	1.34	┌───┐
Welded Wire Fabric	as Noted	as Noted	as Noted	Grid



BAR DETAIL
(See Table of Dimensions)

NOTES:

- All Reinforcement including the Welded Wire Fabric shall be Epoxy Coated.
- 100 mm drainage holes shall be field drilled through wall panels as required to facilitate surface drainage with a maximum of one hole per panel. Location to be determined by the engineer. Cost included in Noise Abatement Wall Ground Mounted (Precast Concrete).
- Work this sheet with sheet 17.

REVISIONS	
NAME	DATE

benesch
alfred benesch & company
Engineers • Surveyors • Planners
205 North Michigan Avenue, Suite 2400
Chicago, Illinois 60601
312-965-0450
JOB NO. 3573

ILLINOIS DEPARTMENT OF TRANSPORTATION
PANEL DETAILS
NOISE ABATEMENT WALL
F.A.I. RTE. 74 (I-74)
SECTION D4 I-74 NOISE WALL 2008
PEORIA COUNTY
STA. 142+916.64 TO STA. 143+287.69
STRUCTURE NUMBER 072-8554

6/22/2007 12:38 PM c:\projects\data3573\noisewalls\wall2\plans\3573nw_panel.dgn