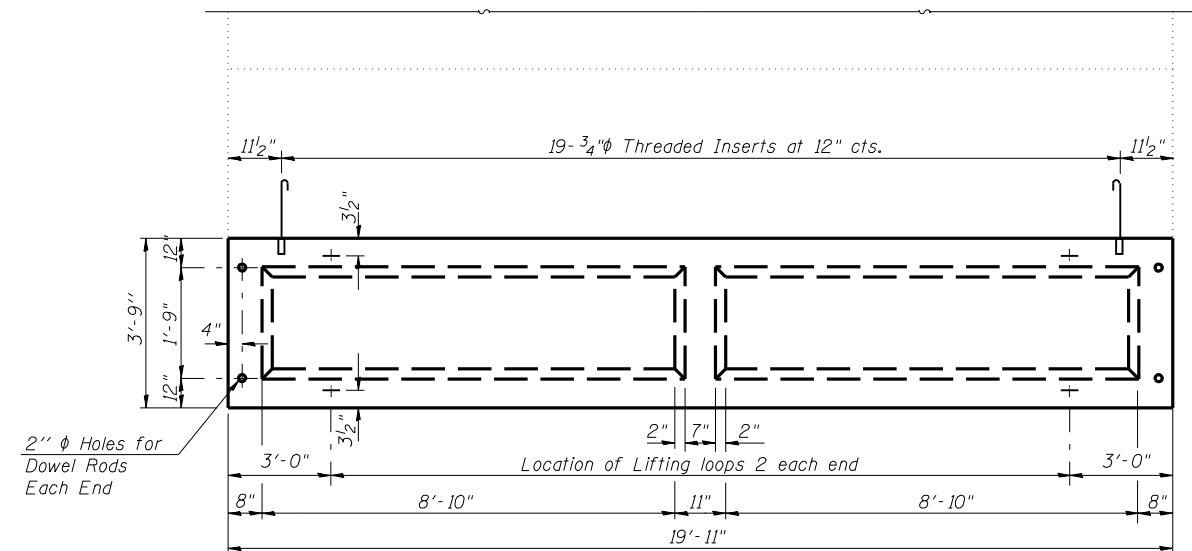
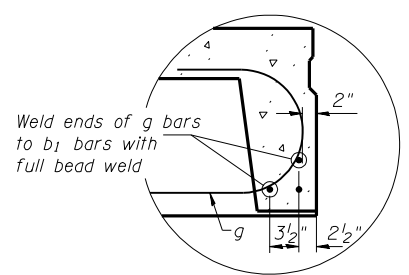


Note:  
Tack welding of stirrups to bottom longitudinal reinforcement bars will not be permitted except as otherwise authorized in writing by the Engineer.

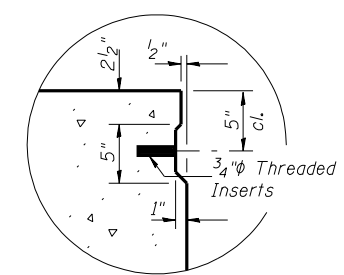
\* (K-15D)BR



**TYPICAL PLAN OF BEAM**



**DETAIL A**

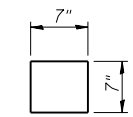


**KEY DETAIL**

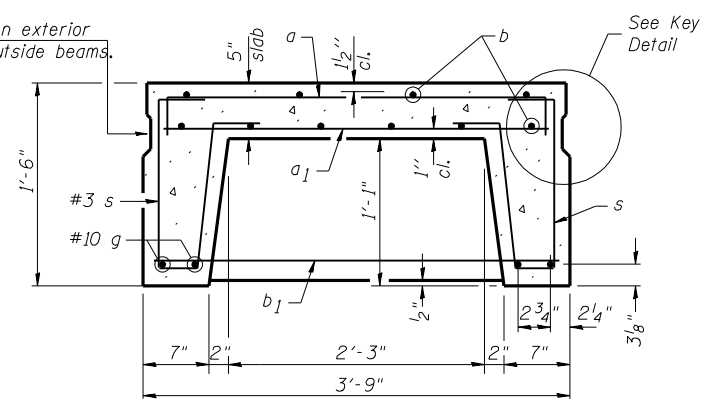
The surface of the member shall not deviate more than 1/1200 of the full length of the member from a straight line connecting the two end points on the member's surface. In addition to State inspection and prior to erection, the beam shall be approved by the resident Engineer at the jobsite. The units shall remain on the bottom supporting forms until the concrete has attained a compressive strength of not less than 3,500 pounds per square inch.

Precast Concrete Bridge Slab shall meet the requirements of Section 504 of the Standard Specifications and shall be paid for at the contract unit price per square foot for Precast Concrete Bridge Slab.

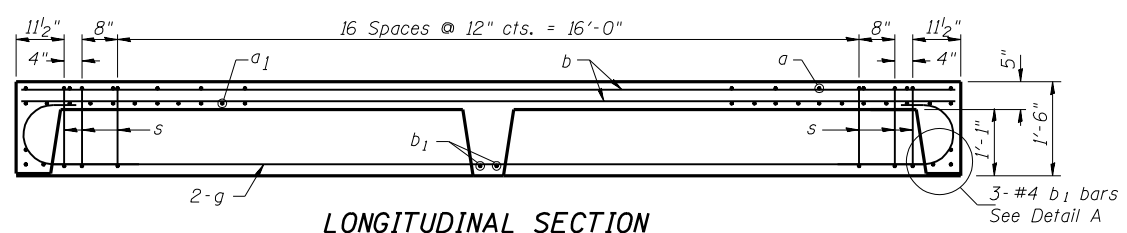
**FABRIC BEARING PAD**  
(4 Req'd.)



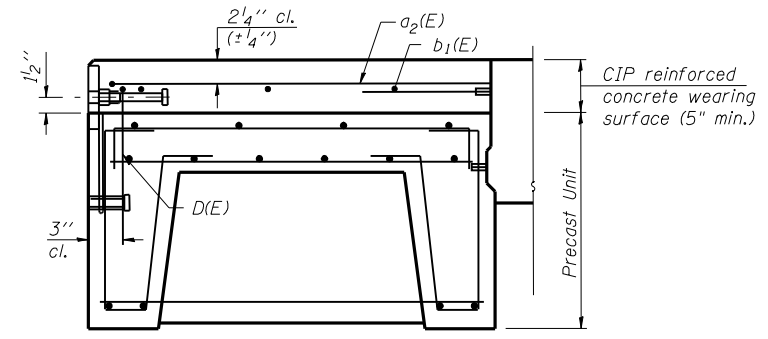
Omit key on exterior face of outside beams.



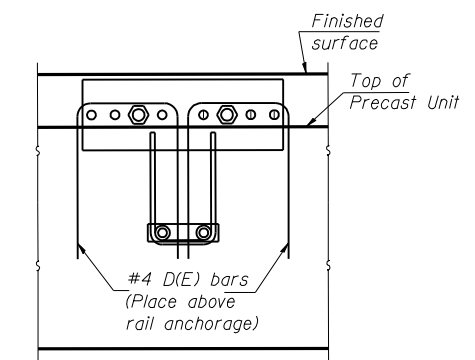
**SECTION THRU PRECAST UNIT**



**LONGITUDINAL SECTION**

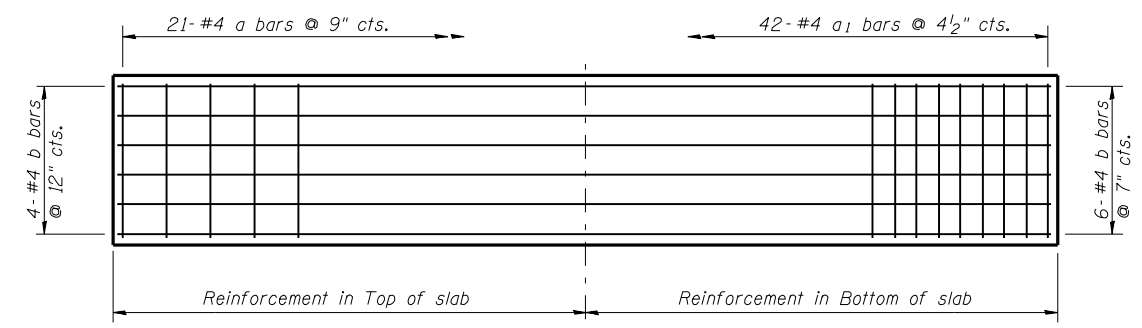


**FASCIA BEAM**



**SECTION A-A**

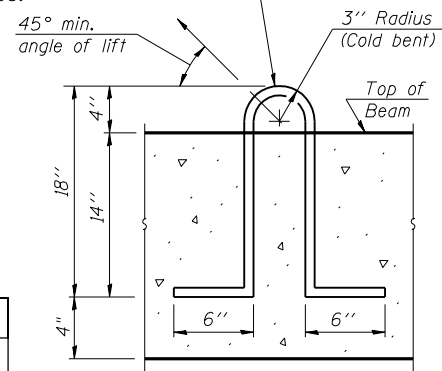
CIP reinforced concrete wearing surface (5" min.)



**PLAN**

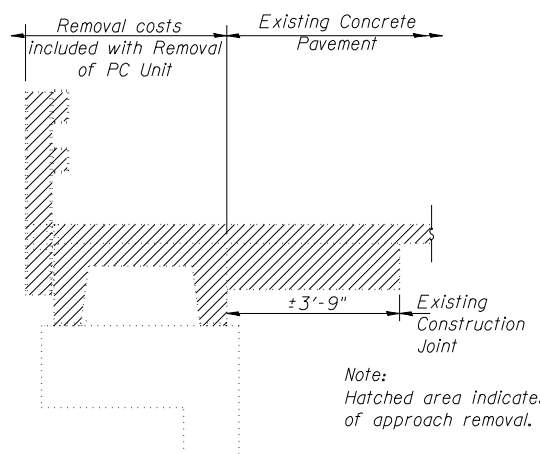
Showing Slab Reinforcement

2-1/2 inch Strands/Loop, 2 Ea. End Ea. Beam. Loop shall be burned off after beams have been erected. Strands shall conform to the requirements of AASHTO M 203.



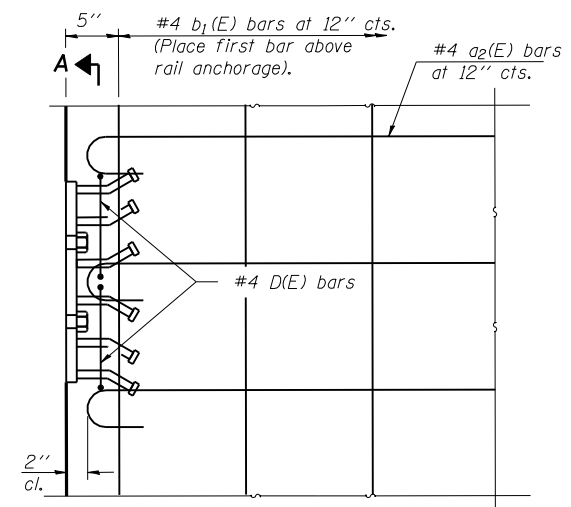
**LIFTING LOOP DETAIL**

Approved alternate may be substituted for the above



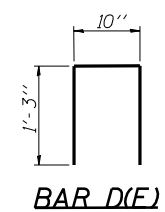
**TYPICAL APPROACH REMOVAL SECTION**

Note:  
Hatched area indicates area of approach removal.

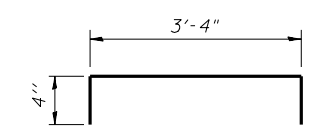


**PLAN**

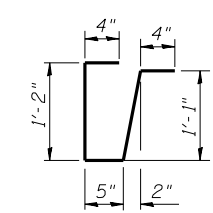
Rail anchorage shall be cast in precast units. See typical section for dimensions, strand pattern and bar callouts not shown. Formwork necessary for the wearing surface may be secured utilizing the bottom rail anchorage inserts and/or additional inserts cast into the beam. Drilling into the precast unit will not be permitted.



**BAR D(E)**



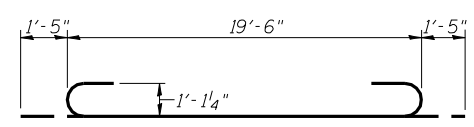
**BAR a**



**BAR s**

**BILL OF MATERIAL**

Item	Unit	Quantity
Precast Concrete Bridge Slab	Sq. Ft.	299
Removal of Existing Precast Unit	Sq. Ft.	299



**BAR g**

DESIGNED	BAN
CHECKED	JOH
DRAWN	TC
CHECKED	BAN

**APPROACH DETAILS**  
**ILLINOIS ROUTE 96 OVER**  
**HOMAN CREEK**  
**F.A.U. RT. 7825 SEC. (K-15D)BR**  
**ADAMS COUNTY**  
**STATION 132+83.00**  
**STR. NO. 001-0031**

**HUTCHISON ENGINEERING, INC.**  
**JACKSONVILLE, ILLINOIS**