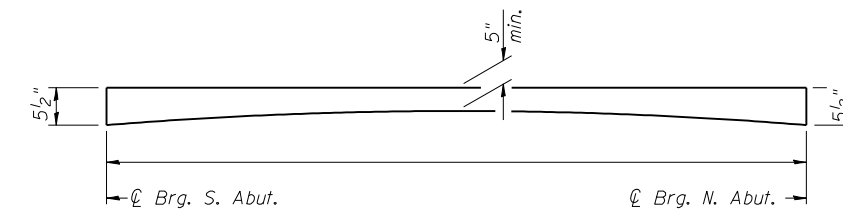
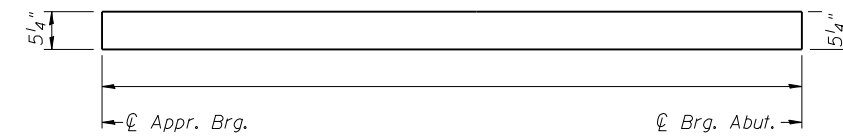


**PLAN**



**REINFORCED CONCRETE WEARING SURFACE PROFILE  
(PPC DECK BEAMS)**

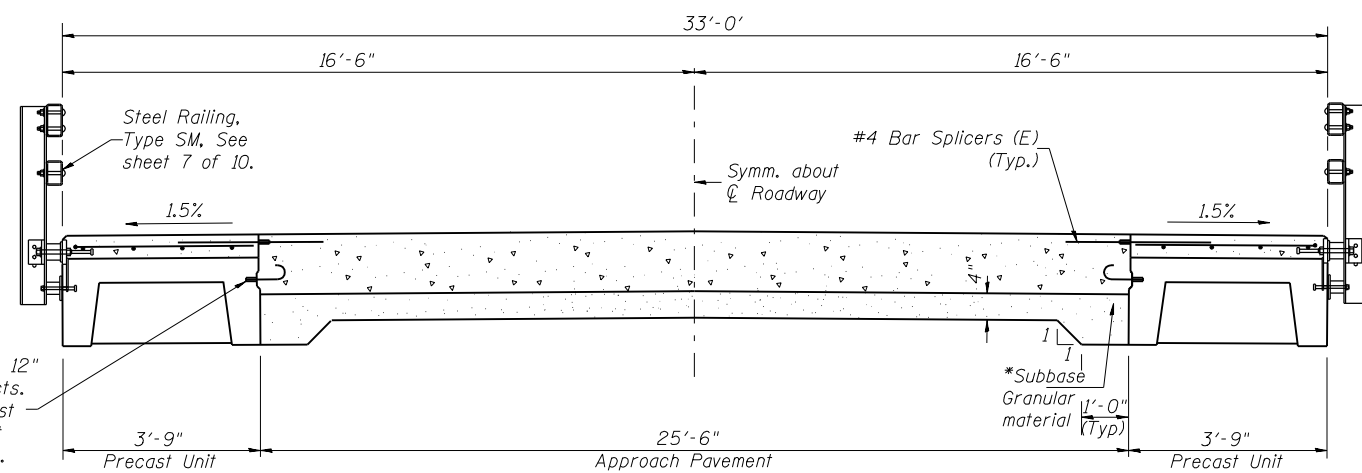


**REINFORCED CONCRETE WEARING SURFACE PROFILE  
(PRECAST UNITS)**

**SUPERSTRUCTURE  
BILL OF MATERIAL**

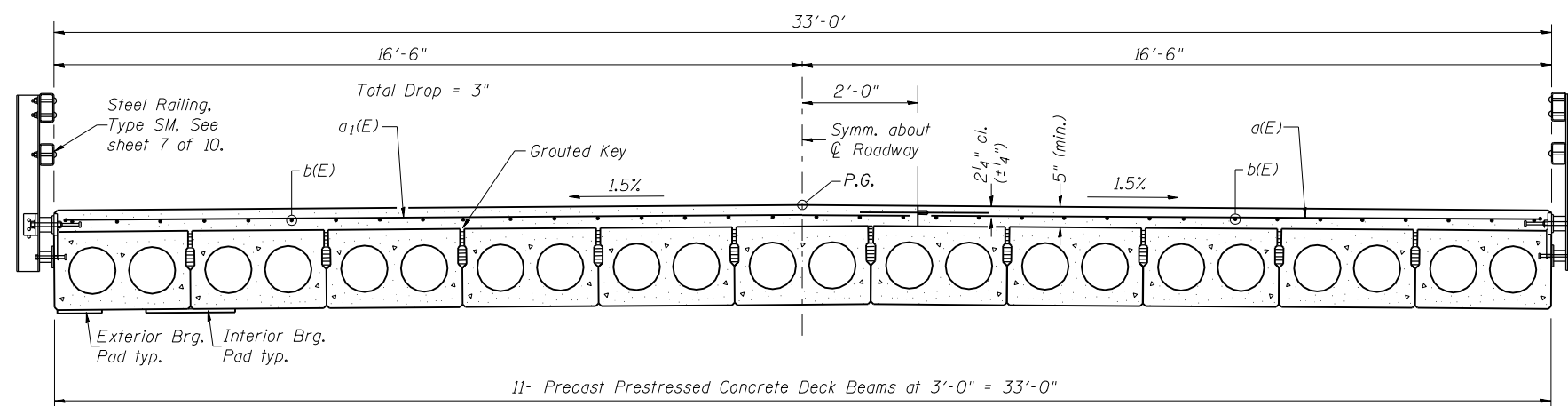
Bar	No.	Size	Length	Shape
a(E)	28	#4	18'-9"	└─┘
a1(E)	28	#4	14'-9"	└─┘
a2(E)	84	#4	4'-0"	└─┘
b(E)	35	#4	26'-10"	—
b1(E)	16	#4	19'-8"	—
Reinforcement Bars, Epoxy Coated			Lbs.	1,690
Concrete Wearing Surface			Sq. Yds.	133
Bar Splicers			Each	112

Reinforcement bars designated (E) shall be Epoxy Coated.  
For Bar Splicer Details, see sheet 10 of 10.

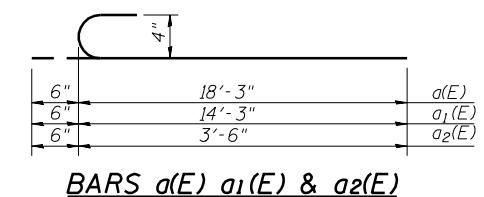


**CROSS SECTION (APPROACH UNITS)**  
Looking North

\*Cost included in Approach Pavement (Special)



**CROSS SECTION (DECK BEAMS)**  
Looking North



**BARS a(E) a1(E) & a2(E)**

DESIGNED	BAN
CHECKED	JOH
DRAWN	TC
CHECKED	BAN

**CONCRETE WEARING SURFACE  
ILLINOIS ROUTE 96 OVER  
HOMAN CREEK  
F.A.U. RT. 7825 SEC. (K-15D)BR  
ADAMS COUNTY  
STATION 132+83.00  
STR. NO. 001-0031**

**HUTCHISON ENGINEERING, INC.**  
JACKSONVILLE, ILLINOIS  
Rev: \_\_\_\_\_ Date: \_\_\_\_\_