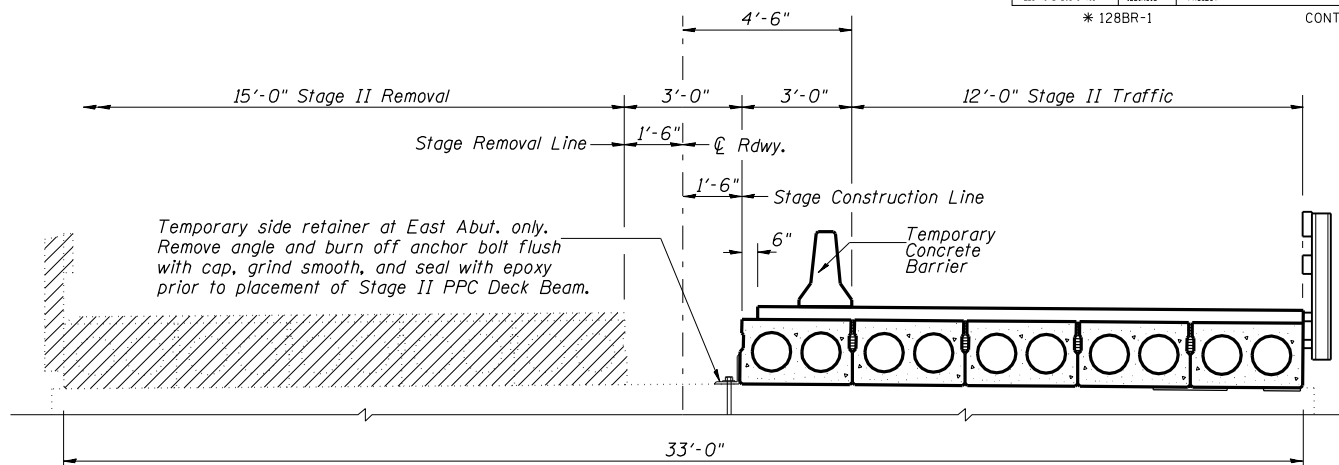
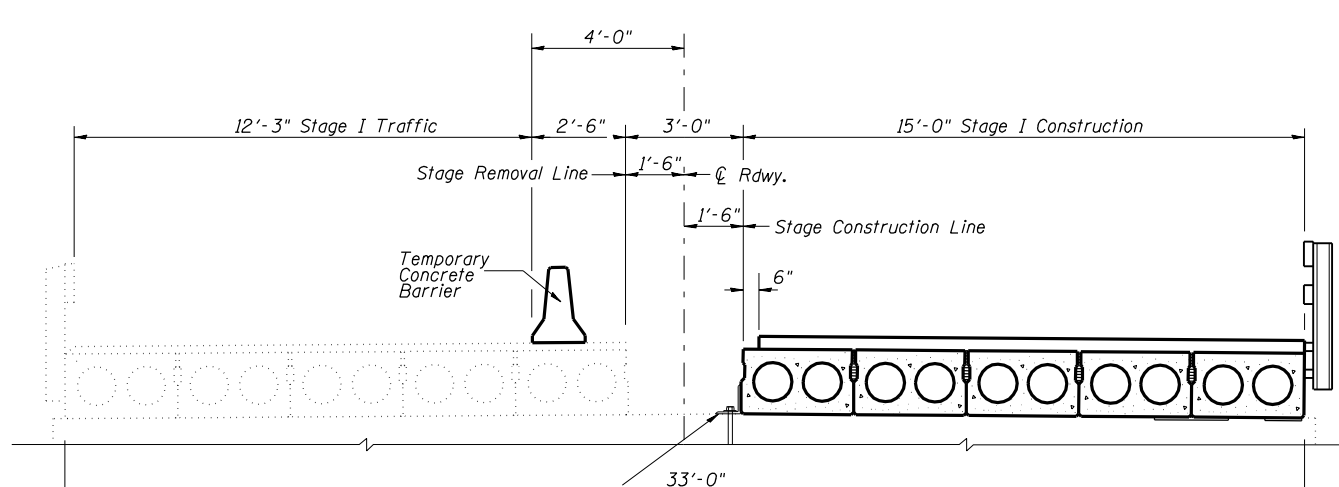


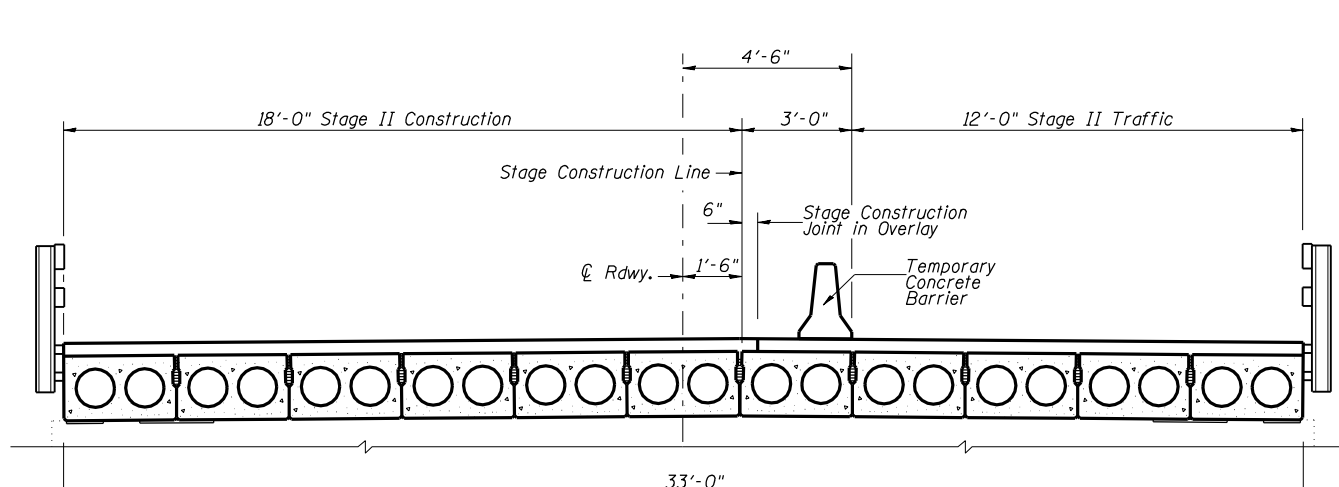
STAGE I REMOVAL



STAGE II REMOVAL



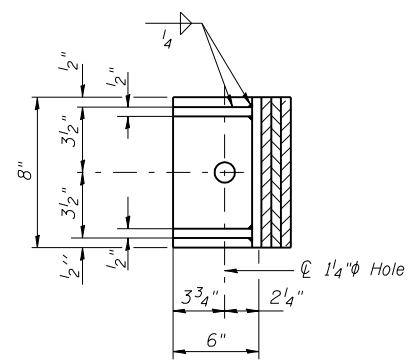
STAGE I CONSTRUCTION



STAGE II CONSTRUCTION

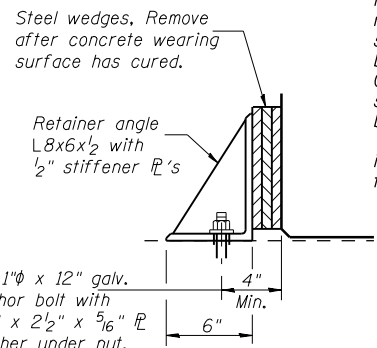
Temporary side retainer at East Abut. only. Remove angle and burn off anchor bolt flush with cap, grind smooth, and seal with epoxy prior to placement of Stage II PPC Deck Beam.

Notes:
All cross-sections are looking southeast. Hatched area indicates Removal of Existing Superstructure. For Temporary Concrete Barrier Details see sheet 3 of 12. Anchor bolts shall be ASTM F1554 all-thread (or an Engineer-approved alternate material) of the grade(s) and diameter(s) specified. ASTM A307 Grade C anchor bolts may be used in lieu of ASTM F1554 Grade 36 (Fy=36ksi). The corresponding specified grade of AASHTO M314 anchor bolts may be used in lieu of ASTM F1554. Drilled and set anchor bolts shall be installed according to Article 521.06 of the Standard Specifications.



TEMPORARY RETAINER ANGLE PLAN

The retainers and hardware shall be galvanized after shop fabrication accordance to AASHTO M111 ASTM 385.



TEMPORARY RETAINER ANGLE ELEVATION

*Anchor bolts or approved threaded rod may be placed in drilled holes and grouted in place. Cost of retainers, accessories, and galvanizing are included with Precast Prestressed Concrete Deck Beams.

DESIGNED	BAN
CHECKED	JOH
DRAWN	TC
CHECKED	BAN

STAGE CONSTRUCTION DETAILS
F.A.P. 753 (ILL 104) OVER
WOODS CREEK
SECTION 128BR-1
MORGAN COUNTY
STATION 726+50.29
STR. NO. 069-0022

HUTCHISON ENGINEERING, INC.
JACKSONVILLE, ILLINOIS
Rev: _____ Date: _____