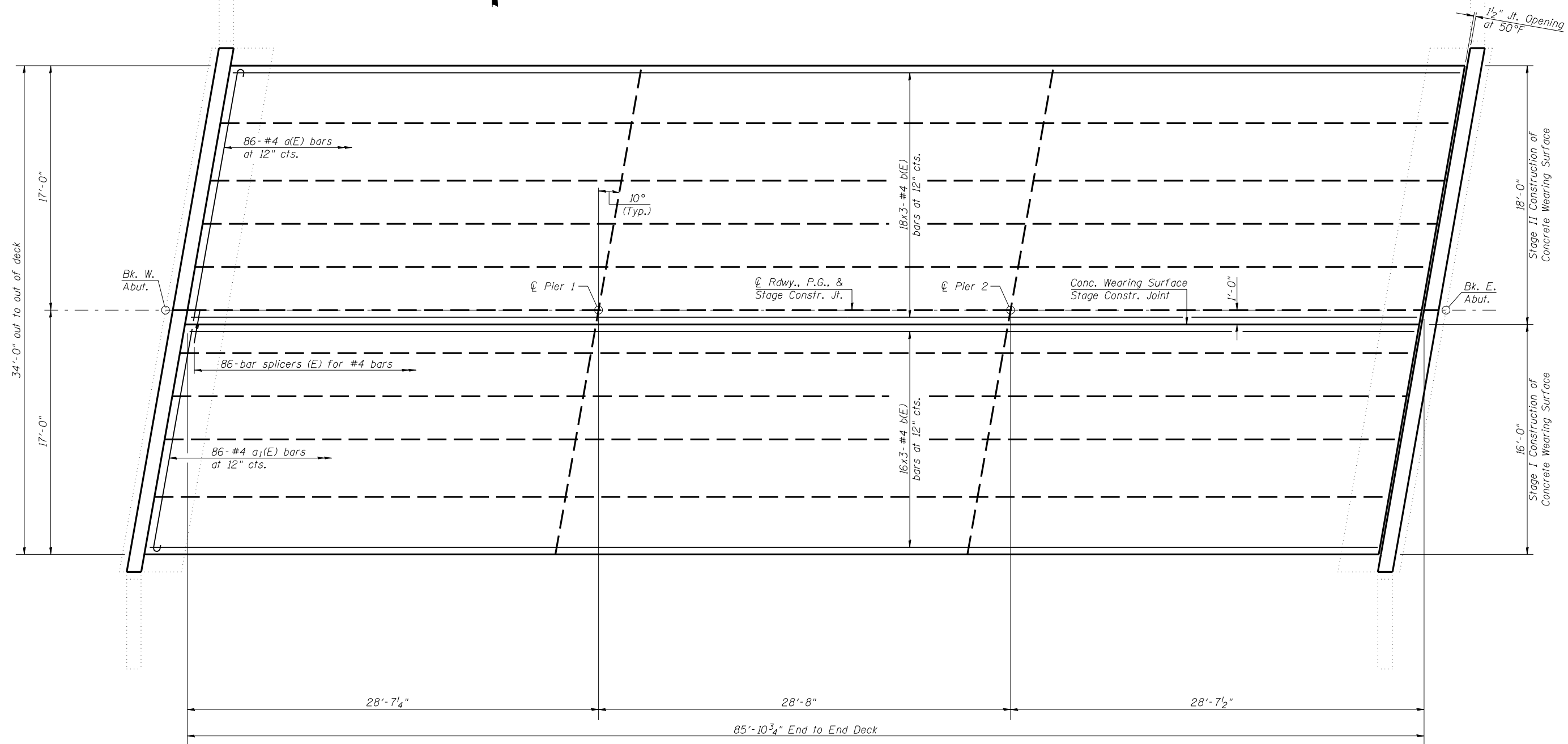


ROUTE NO.	SECTION	COUNTY	TOTAL SHEETS	SHEET NO.
F.A.P. 685	115 BR-1	HANCOCK	44	23
FED. ROAD DIST. NO. 7	ILLINOIS	FED. AID PROJECT		

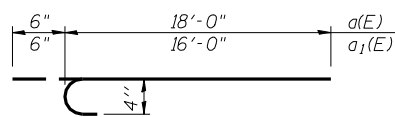
SHEET NO. 5
17 SHEETS

Contract #72A90

MIN. BAR LAP
#4 Bar = 1'-4"



PLAN



a(E) and a1(E) BARS

Notes:
For remainder of superstructure details, see Sheets 6 thru 8 of 17.
Bars indicated thus 16x3-#4 etc. indicates 16 lines of bars with 3 lengths per line.
See Sheet 3 of 17 for shear key clamping details at Stage Construction Joint.

Lin Engineering, Ltd.
Consulting Engineers
Chatham, Illinois

Designed By: DLS Checked By: MTH Drawn By: AUF
Date: 04/2007 File: 034-0061.dgn

REVISIONS	
NAME	DATE

ILLINOIS DEPARTMENT OF TRANSPORTATION
SUPERSTRUCTURE
IL ROUTE 9 OVER
CAMP CREEK
F.A.P. ROUTE 685 - SECTION 115 BR-1
HANCOCK COUNTY
STA. 607+43.00
STRUCTURE NO. 034-0061

\$FILEABBREV\$

1:35:49 PM

7/2/2007