

F.A.P. RTE.	SECTION	COUNTY	TOTAL SHEETS	SHEET NO.
761	107BR-6	MACOUPIN	9	1

+1
10

STATE OF ILLINOIS
DEPARTMENT OF TRANSPORTATION
DIVISION OF HIGHWAYS

**PROPOSED
HIGHWAY PLANS**

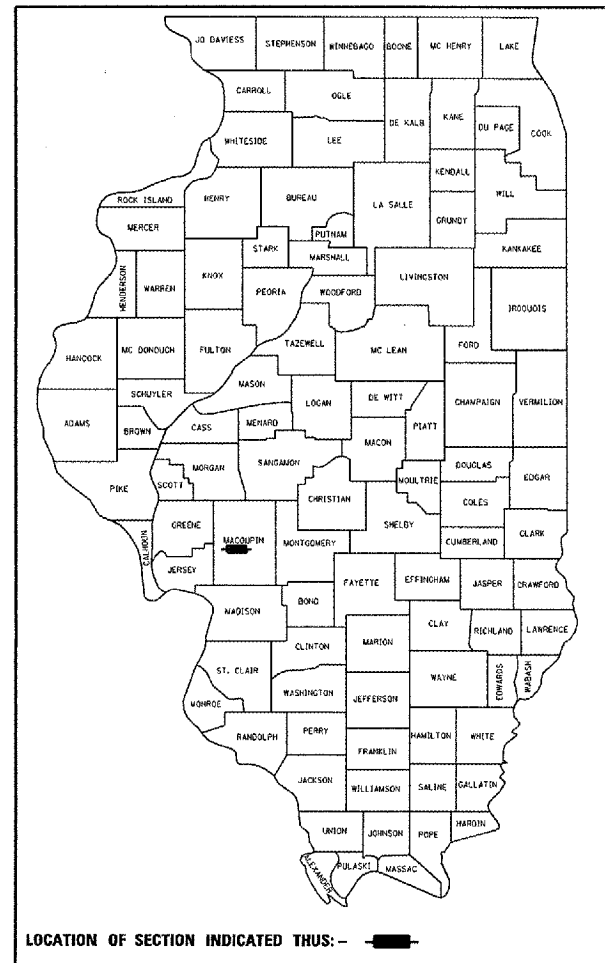
FAP ROUTE 761 (IL 108)
SECTION 107BR-6
PROJECT
MACOUPIN COUNTY
C-96-118-07

FOR INDEX OF SHEETS

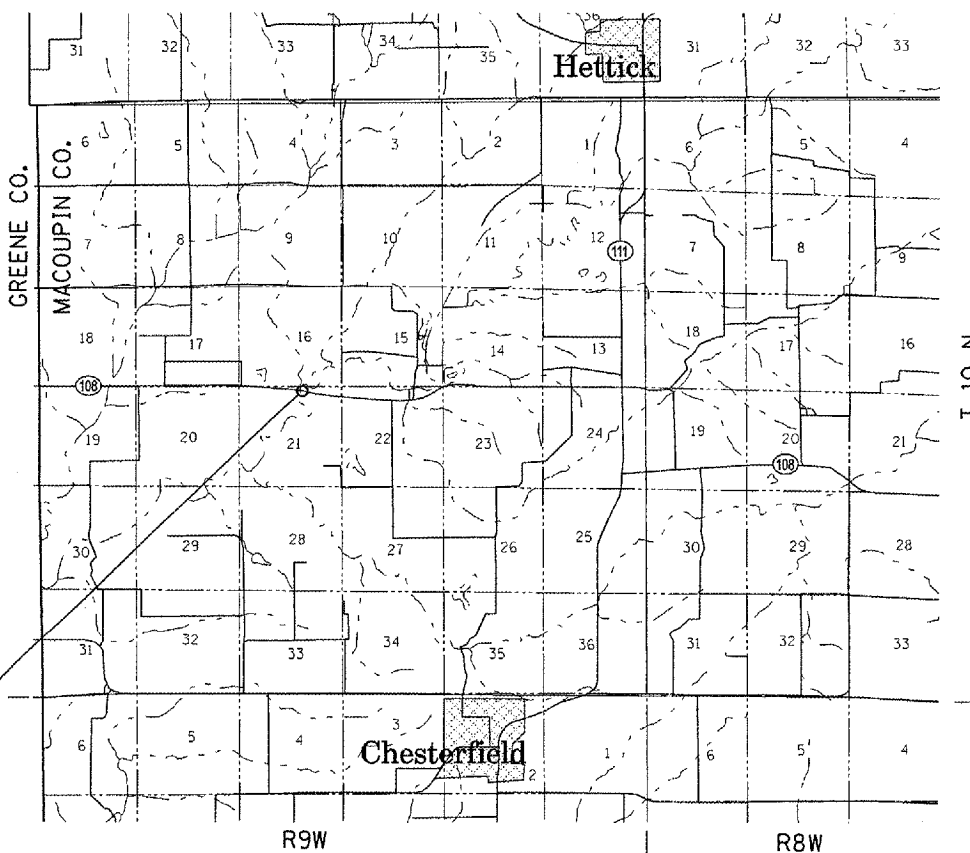
- 1 COVER SHEET
- 2 GENERAL NOTES
- 3 SUMMARY OF QUANTITIES
- 4-5 EXISTING TRAFFIC CONTROL
- 6-7 PROPOSED TRAFFIC CONTROL
- 8-9 BRIDGE PLANS

STANDARDS

- 701001-01
- 701006-02
- 701201-02
- 701311-02
- 701331-02
- 702001-06
- 704001-03
- 780001-01



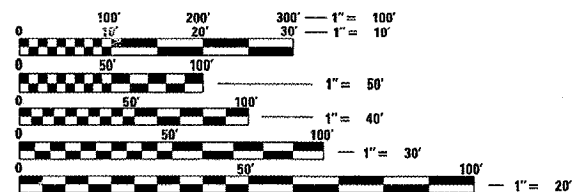
LOCATION OF SECTION INDICATED THUS: -



EX. SN 059-0034
IL 108 OVER HODGES CREEK

LOCATION MAP

NET LENGTH OF PROJECT = 561.28 FEET = 0.106 MILES



FULL SIZE PLANS HAVE BEEN PREPARED USING STANDARD ENGINEERING SCALES. REDUCED SIZED PLANS WILL NOT CONFORM TO STANDARD SCALES. IN MAKING MEASUREMENTS ON REDUCED PLANS, THE ABOVE SCALES MAY BE USED.

J.U.L.I.E.
JOINT UTILITY LOCATION INFORMATION FOR EXCAVATION
1-800-892-0123

STATE OF ILLINOIS
DEPARTMENT OF TRANSPORTATION
DIVISION OF HIGHWAYS

SUBMITTED July 3, 2007
Christ M. Reed
DEPUTY DIRECTOR OF HIGHWAYS, REGION ENGINEER

August 17, 2007
Eric E. Harn
INTERIM ENGINEER OF DESIGN AND ENVIRONMENT

August 17, 2007
Melton R. Sees, P.E.
DIRECTOR OF HIGHWAYS, CHIEF ENGINEER

**PRINTED BY THE AUTHORITY
OF THE STATE OF ILLINOIS**

F.A.P. RTE.	SECTION	COUNTY	TOTAL SHEETS	SHEET NO.
761	107BR-6	MACOUPIN	9	2
STA.		TO STA.		
FED. ROAD DIST. NO.		ILLINOIS FED. AID PROJECT		

GENERAL NOTES

1. PLAN DIMENSIONS AND DETAILS RELATIVE TO EXISTING STRUCTURE HAVE BEEN TAKEN FROM EXISTING PLANS AND ARE SUBJECT TO NOMINAL CONSTRUCTION VARIATIONS. IT SHALL BE THE CONTRACTOR'S RESPONSIBILITY TO VERIFY SUCH DIMENSIONS AND DETAILS IN THE FIELD AND MAKE NECESSARY APPROVED ADJUSTMENTS PRIOR TO CONSTRUCTION OR ORDERING OF MATERIALS. SUCH VARIATIONS SHALL NOT BE CAUSE FOR ADDITIONAL COMPENSATION OR A CHNAGE IN THE SCOPE OF THE WORK. HOWEVER, THE CONTRACTOR WILL BE PAID FOR THE QUANTITY ACTUALLY FURNISHED AT THE UNIT PRICE FOR THE WORK.
2. THE EXISTING TRAFFIC CONTROL SHALL BE REMOVED BY THE CONTRACTOR AFTER COMPLETION OF THE TEMPORARY BRIDGE REPAIRS. THE TRAFFIC CONTROL DEVICES SHALL BE DELIVERED TO 445 N. PLUM ST. CARLINVILLE, IL.

DISTRICT SIX		
EXAMINED	<u>June 27</u>	20 <u>07</u>
<i>[Signature]</i>		
OPERATIONS ENGINEER		
EXAMINED	<u>July 3</u>	20 <u>07</u>
<i>[Signature]</i>		
PROGRAM IMPLEMENTATION ENGINEER		
EXAMINED	<u>June 28</u>	20 <u>07</u>
<i>[Signature]</i>		
PROGRAM DEVELOPMENT ENGINEER		

PLOT DATE = 7/5/2007
 FILE NAME = c:\p\projects\0611807\vtg\notes.dgn
 PLOT SCALE = 1/8"=1'-0"
 USER NAME = gmmw@jg

REVISIONS	
NAME	DATE

ILLINOIS DEPARTMENT OF TRANSPORTATION
 GENERAL NOTES
 FAP 761 (IL 108)
 SECTION 107BR-6
 MACOUPIN COUNTY
 SCALE: VERT. _____
 DATE _____ HORIZ. _____
 DRAWN BY _____
 CHECKED BY _____

F.A.P. RTE.	SECTION	COUNTY	TOTAL SHEETS	SHEET NO.
761	107BR-6	MACOUPIN	9	3
STA.		TO STA.		
FED. ROAD DIST. NO.		ILLINOIS	FED. AID PROJECT	

ILLINOIS DEPARTMENT OF TRANSPORTATION
SUMMARY OF QUANTITIES

CODE NO.	ITEM	UNIT	100% STATE SFTY-2A	TOTAL QUANTITY
50500405	FURNISHING AND ERECTING STRUCTURAL STEEL	POUND	134,860	134,860
67000400	ENGINEER'S FIELD OFFICE, TYPE A	CAL MO	4	4
67100100	MOBILIZATION	L SUM	1	1
70103700	TRAFFIC CONTROL COMPLETE	L SUM	1	1
70300230	TEMPORARY PAVEMENT MARKING - LINE 5"	FOOT	4110	4110
70301000	WORK ZONE PAVEMENT MARKING REMOVAL	SQ FT	811	811
70400100	TEMPORARY CONCRETE BARRIER	FOOT	612.5	612.5
78001120	PAINT PAVEMENT MARKING - LINE 5"	FOOT	4110	4110
Z0030260	IMPACT ATTENUATORS, TEMPORARY (FULLY REDIRECTIVE, NARROW), TEST LEVEL 3	EACH	2	2
78200500	BARRIER WALL MARKERS	EACH	25	25

PLOT DATE = 7/5/2007
FILE NAME = c:\nrc\p\msta\10711871.dwg
USER NAME = 10711871
USER = gmsw@idg

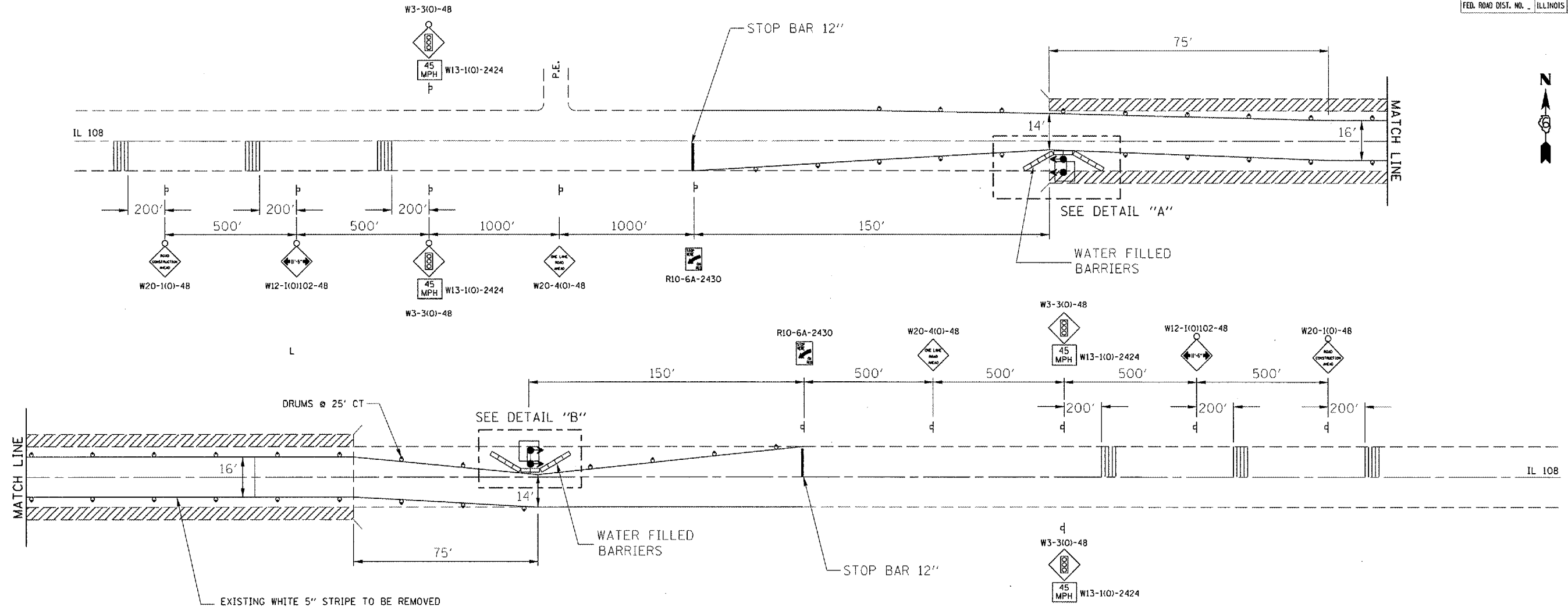
REVISIONS	
NAME	DATE

ILLINOIS DEPARTMENT OF TRANSPORTATION
SUMMARY OF QUANTITIES
FAP 761 (IL 108)
SECTION 107BR-6
MACOUPIN COUNTY

VERT. SCALE: DRAWN BY
HORIZ. CHECKED BY
DATE

Rev.

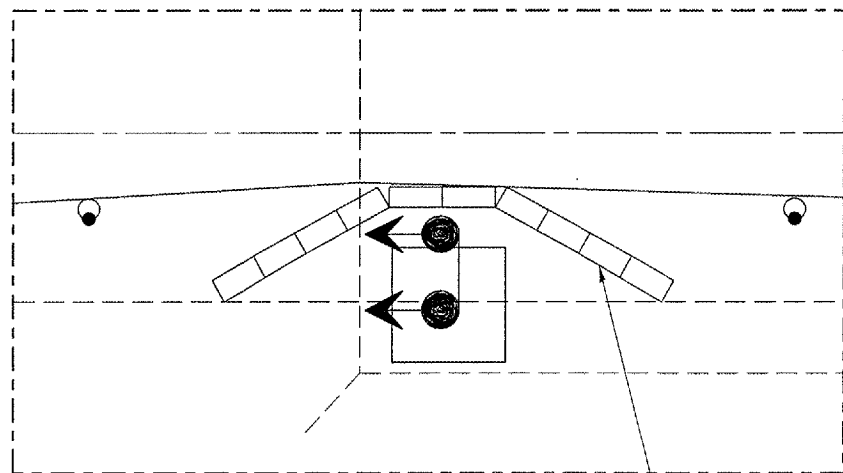
F.A.P. RTE.	SECTION	COUNTY	TOTAL SHEETS	SHEET NO.
761	107BR-6	MACOUPIN	9	4
STA. _____		TO STA. _____		
FED. ROAD DIST. NO. _____		ILLINOIS FED. AID PROJECT		



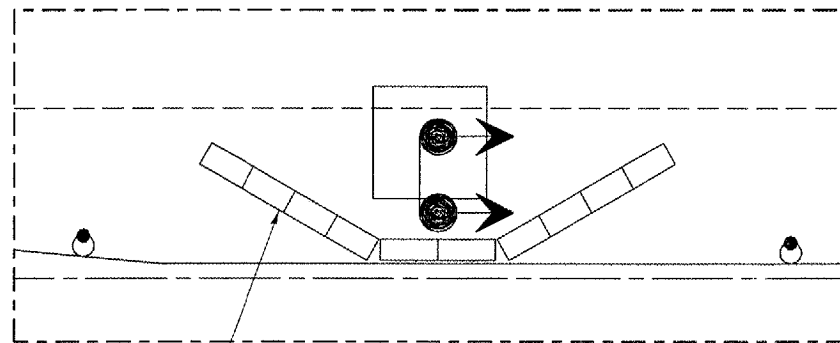
SYMBOLS

	WORK AREA
	SIGN
	DRUM WITH STEADY BURNING LIGHT
	TRAFFIC SIGNAL
	TEMPORARY RUMBLE STRIP

DETAIL "A"



DETAIL "B"



GENERAL NOTES

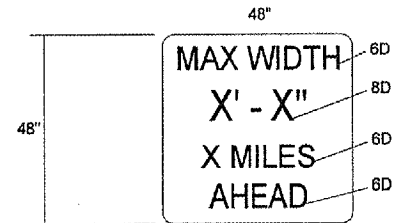
- EXISTING OR TEMPORARY PAVEMENT MARKING SHALL BE ON BOTH SIDES OF THE OPEN LANE FROM STOP BAR TO STOP BAR.
- LOCATIONS OF PORTABLE SIGNALS TO BE DETERMINED IN THE FIELD.

REVISIONS	
NAME	DATE

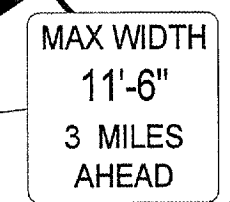
ILLINOIS DEPARTMENT OF TRANSPORTATION
 EXISTING
 TRAFFIC CONTROL STANDARD 701316 SPECIAL
 IL ROUTE 108 OVER HODGES CREEK
 SECTION 107BR-6
 MACOUPIN COUNTY

SCALE: VERT. _____
 HORIZ. _____
 DATE _____ DRAWN BY _____
 CHECKED BY _____

F.A.P. RTE.	SECTION	COUNTY	TOTAL SHEETS	SHEET NO.
761	107BR-6	MACOUPIN	9	5
STA.		TO STA.		
FED. ROAD DIST. NO.	ILLINOIS	FED. AID PROJECT		



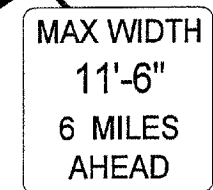
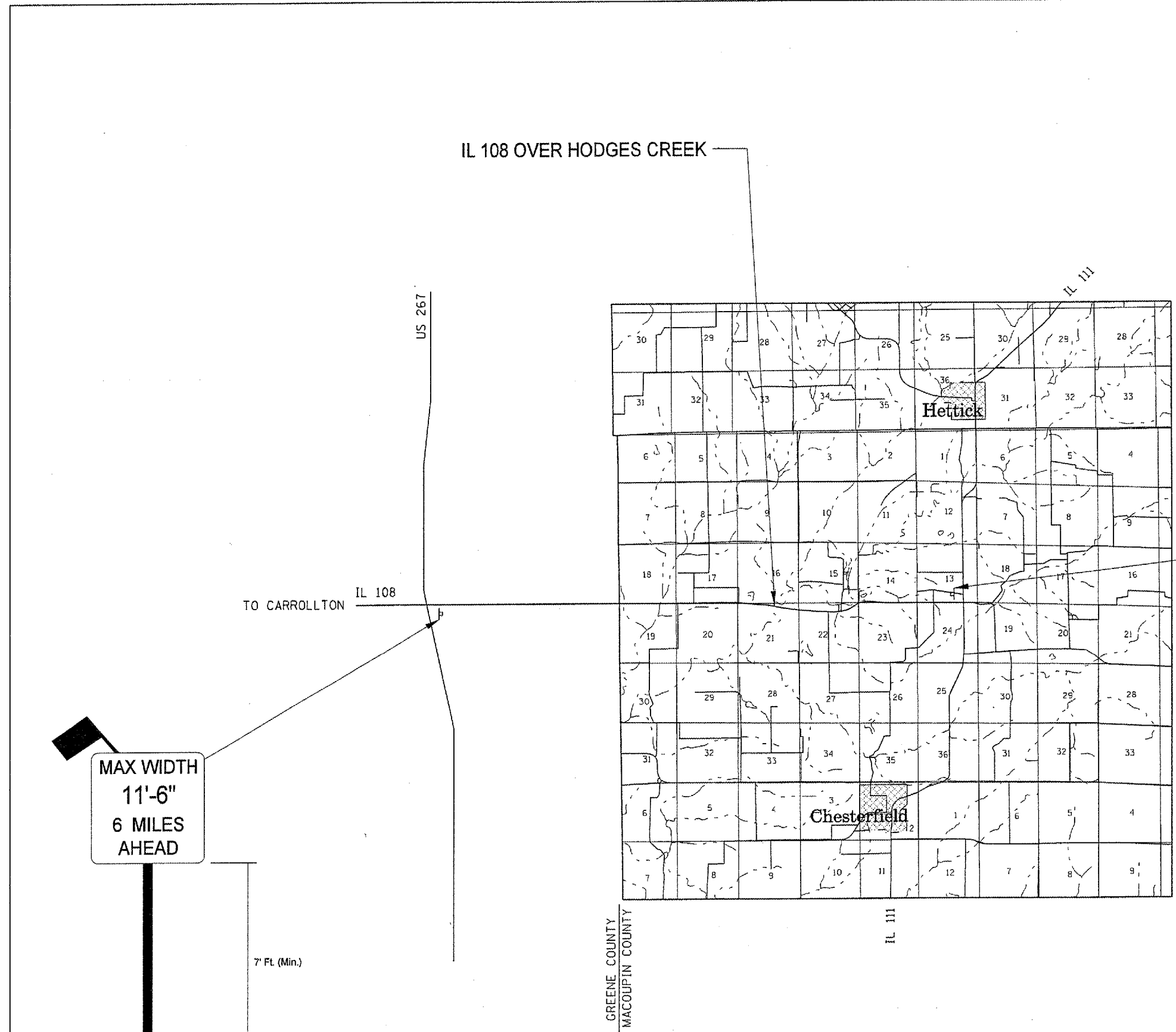
MAX WIDTH
DETAIL



7' Ft. (Min.)

NOTE: MAX WIDTH SIGNS,
BE LEFT IN PLACE
AT COMPLETION OF
THIS PROJECT

IL 108 OVER HODGES CREEK



7' Ft. (Min.)

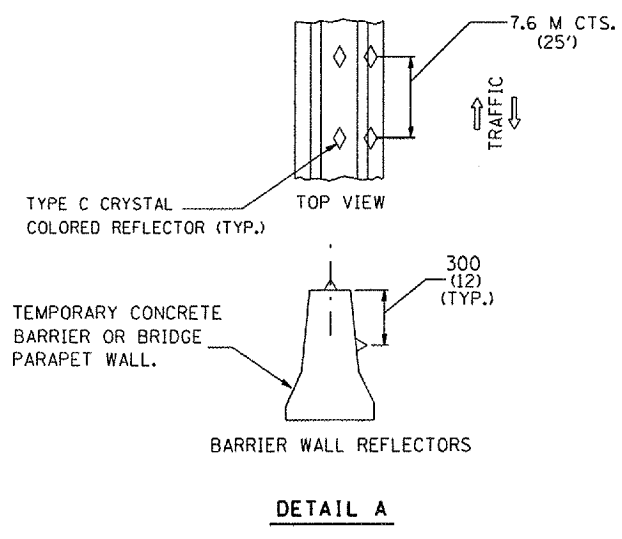
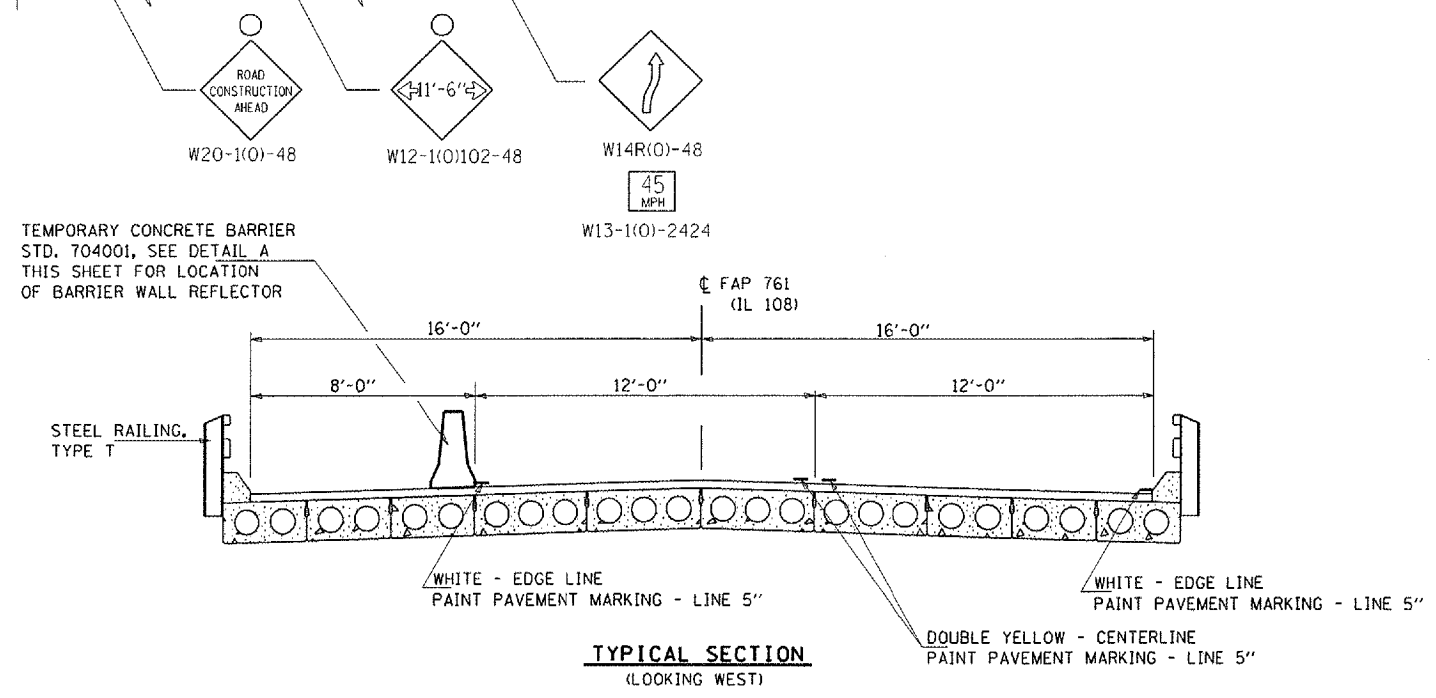
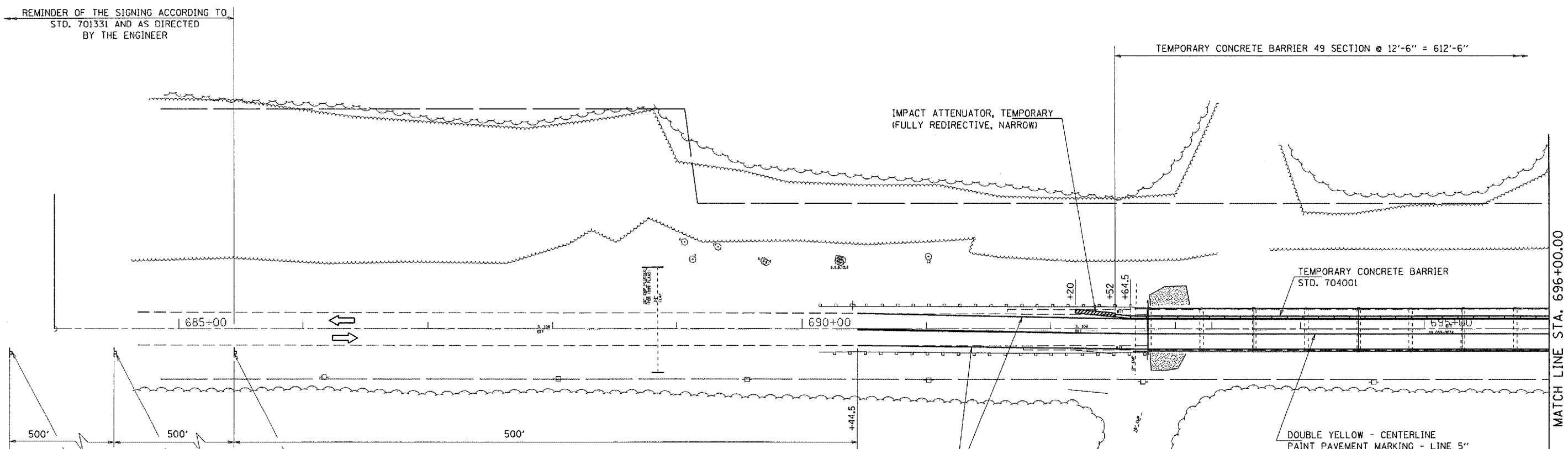
GREENE COUNTY
MACOUPIN COUNTY

REVISIONS		ILLINOIS DEPARTMENT OF TRANSPORTATION EXISTING TRAFFIC CONTROL STANDARD 701316 SPECIAL IL ROUTE 108 OVER HODGES CREEK SECTION 107BR-6 MACOUPIN COUNTY
NAME	DATE	

SCALE:	VERT.	DRAWN BY
	HORIZ.	
DATE		CHECKED BY

F.A.P. RTE.	SECTION	COUNTY	TOTAL SHEETS	SHEET NO.
761	107BR-6	MACOUPIN	9	6
STA. _____ TO STA. _____		FED. ROAD DIST. NO. _____ ILLINOIS FED. AID PROJECT		

- SYMBOLS**
- ⊥ SIGN ON PORTABLE OR PERMANENT SUPPORT
 - ⊙ DRUM WITH STEADY BURNING LIGHT
 - ▬ TEMPORARY CONCRETE BARRIER WALL
 - ▨ IMPACT ATTENUATOR, NARROW



- NOTES:**
- PRIOR TO PLACING THE PROPOSED TRAFFIC CONTROL THE BRIDGE REPAIRS AS DETAILED IN THESE PLANS SHALL BE COMPLETED.
 - ALL TRAFFIC CONTROL DEVICES PLACED UNDER THIS CONTRACT SHALL BE LEFT IN PLACE AT COMPLETION OF THIS PROJECT AND SHALL BECOME PROPERTY OF THE STATE OF ILLINOIS. ALL TRAFFIC CONTROL DEVICES SHALL BE NEW WHEN INSTALLED AND SHALL BE IN GOOD CONDITION AT THE COMPLETION OF THE PROJECT. ANY DEVICES THAT ARE DAMAGED DURING THE PROJECT OR IN LESS THAN GOOD CONDITION SHALL BE REPLACED AT THE CONTRACTOR'S EXPENSE.

REVISIONS	
NAME	DATE

ILLINOIS DEPARTMENT OF TRANSPORTATION
PROPOSED TRAFFIC CONTROL
IL ROUTE 108 OVER HODGES CREEK
SECTION 107BR-6
MACOUPIN COUNTY

SCALE: VERT. _____
 HORIZ. _____

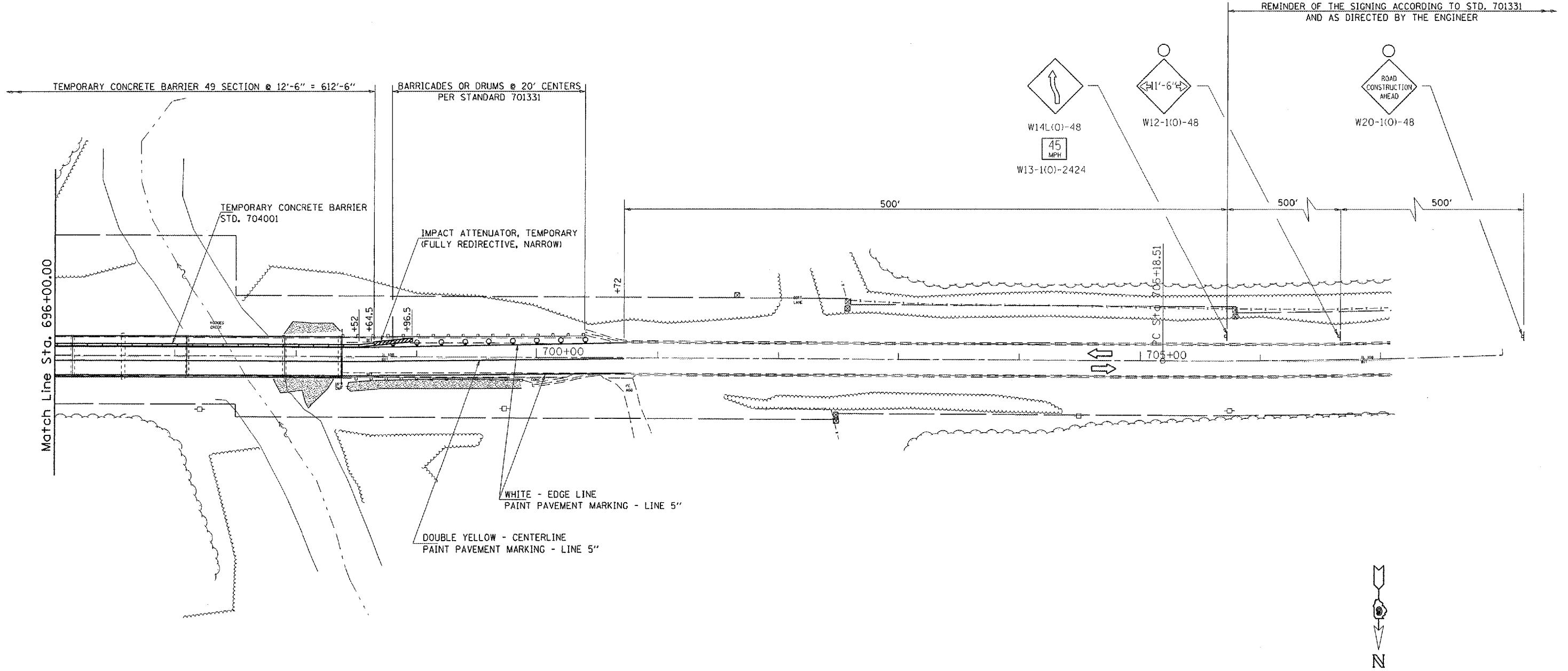
DATE _____ DRAWN BY _____
 CHECKED BY _____

PLOT DATE = 7/15/2007
 FILE NAME = c:\pco\mca\jds2287\shasaga.1108.dgn
 PLOT SCALE = 84.742 / IN.
 USER NAME = gmmardj

F.A.P. RTE.	SECTION	COUNTY	TOTAL SHEETS	SHEET NO.
761	107BR-6	MACOUPIN	9	7
STA. _____		TO STA. _____		
FED. ROAD DIST. NO. _____		ILLINOIS FED. AID PROJECT _____		

SYMBOLS

- ⊥ SIGN ON PORTABLE OR PERMANENT SUPPORT
- DRUM WITH STEADY BURNING LIGHT
- ▬ TEMPORARY CONCRETE BARRIER WALL
- ▨ IMPACT ATTENUATOR



REVISIONS	
NAME	DATE

ILLINOIS DEPARTMENT OF TRANSPORTATION
PROPOSED TRAFFIC CONTROL
IL ROUTE 108 OVER HODGES CREEK
SECTION 107BR-6
MACOUPIN COUNTY

SCALE: VERT. _____
 HORIZ. _____
 DATE _____

DRAWN BY _____
 CHECKED BY _____

PLOT DATE = 7/25/2007
 FILE NAME = c:\projects\108\108\108.dgn
 USER NAME = gburndy

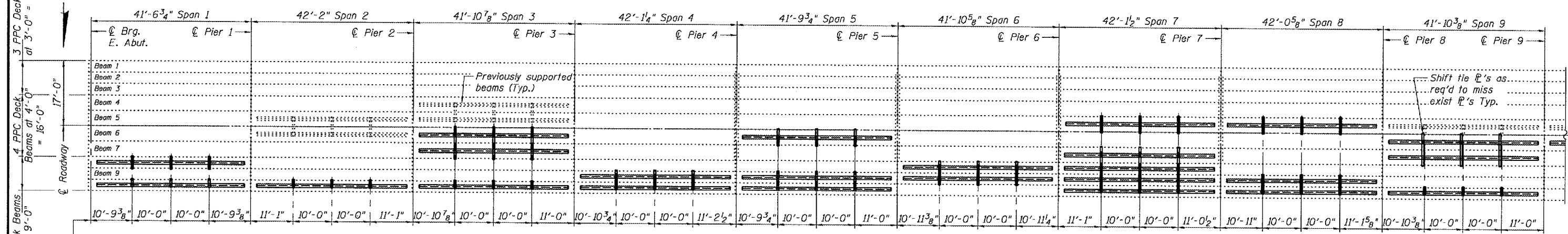
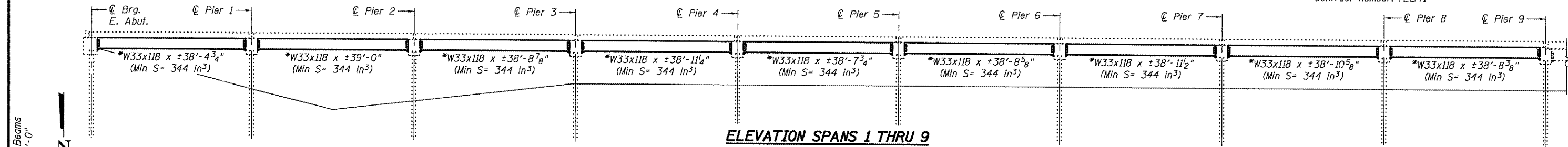
*Contractor is to verify beam length prior to ordering material. Other sections meeting the section modulus requirements shown may be allowed subject to approval by the Bureau of Bridges and Structures. Maximum Girder depth = 36". No additional payment will be allowed if the contractor chooses a heavier steel section than the one specified in the plans

STATE OF ILLINOIS
DEPARTMENT OF TRANSPORTATION

**Transverse tie R's (3 per span). Place additional shims at midpoints between tie R's. Securely weld shims to top flange of support beam. Minimum shim size is 6" x flange width.

ROUTE NO.	SECTION	COUNTY	TOTAL SHEETS	SHEET NO.	SHEET NO. 1
		Macoupin	9	8	3 SHEETS
FED. ROAD DIST. NO. 7	ILLINOIS	FED. AID PROJECT			

Contract Number: 72B41



GENERAL NOTES

All structural steel shall conform to AASHTO Classification M-270 Gr. 36, unless otherwise noted.

Plan dimensions and details relative to existing plans are subject to routine variations. The Contractor shall field verify existing dimensions and details affecting new construction and make necessary approved adjustments prior to construction or ordering of materials. Such variations shall not be cause for additional compensation for a change in scope of the work, however, the Contractor will be paid for the quantity actually furnished based upon the unit price bid for the work.

The contractor is advised that the existing PPC Deck Beams are in a deteriorated condition with reduced load carrying capacity. It is the contractor's responsibility to account for the condition of the beams when developing construction procedures.

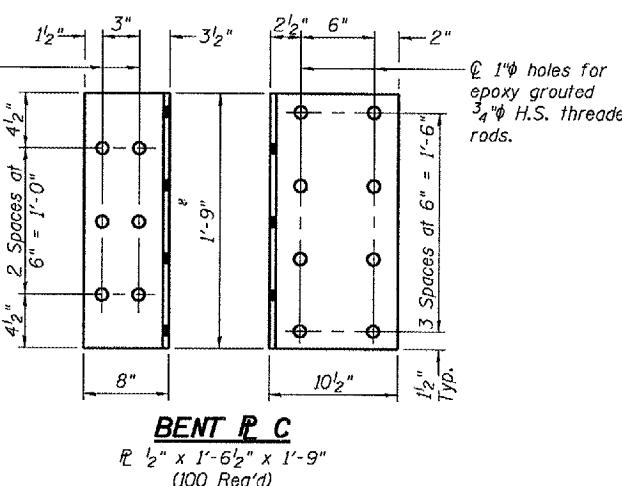
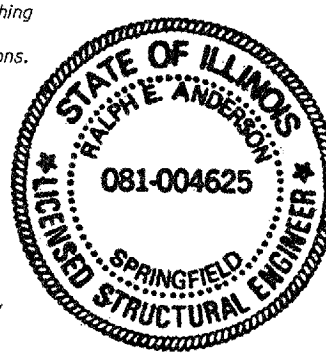
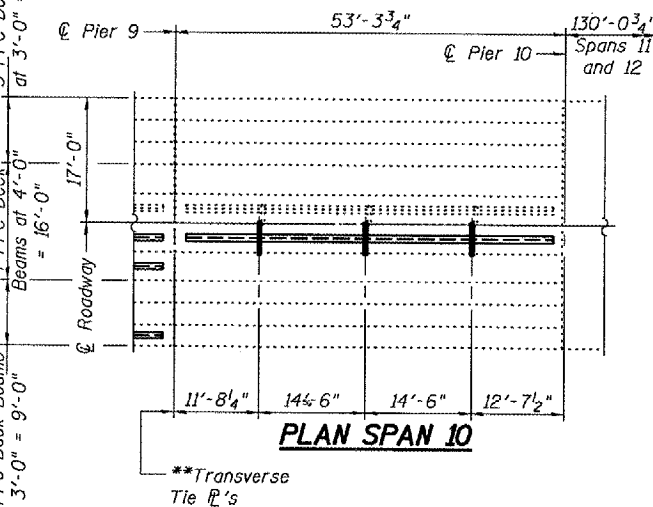
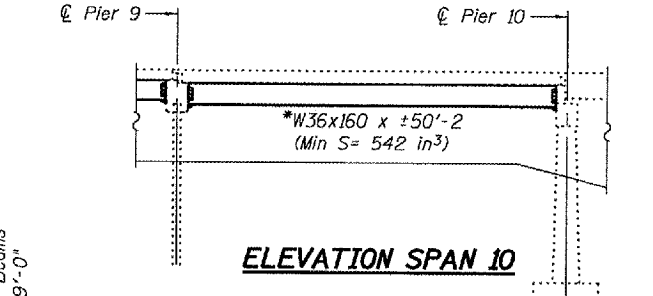
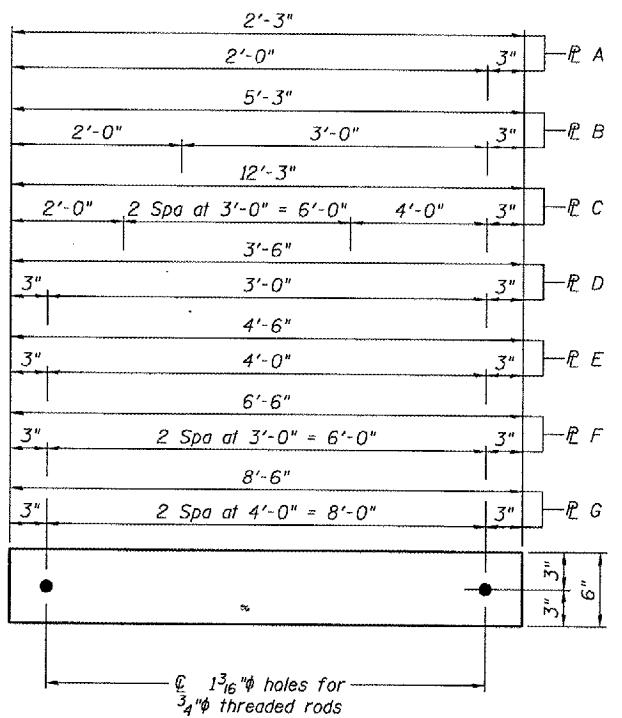
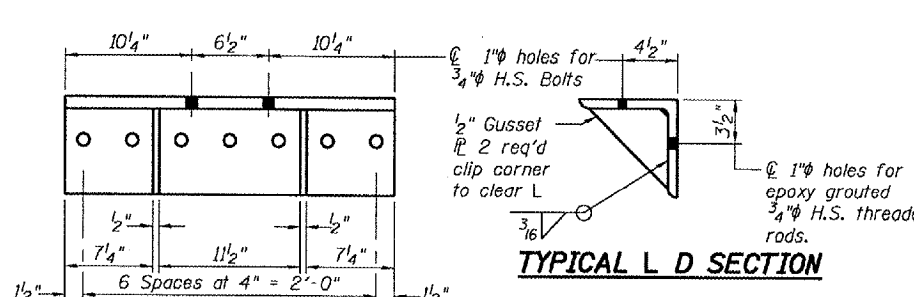
See Section 584 of the Standard Specifications for Epoxy Grouting of Threaded Rods; Minimum embedment 9".

If the contractor's procedure for placement of beams involves placement of cranes or other heavy equipment on the bridge, a detailed procedure shall be submitted to the Engineer for approval. The procedure shall include calculations, prepared and sealed by an Illinois Licensed Structural Engineer, verifying that the equipment and procedure used will not overstress the existing beams. To distribute load to multiple beams and protect the existing surface, in all cases a double layer mat of heavy timbers shall be used at all times under crane tracks or wheels and any outriggers in the down position. If necessary, shims shall be used under the crane mat to ensure uniform contact with the underlying beams.

The cost of epoxy grouting threaded rods shall be included with Furnishing and Erecting Structural Steel.

The Contractor has the option of using used steel. See Special Provisions.

The cost of riprap relocation required to attach support beams to abutment face shall be included with Furnishing and Erecting Structural Steel.



DESIGNED: [Signature]
CHECKED: [Signature]
DRAWN: [Signature]
CHECKED: [Signature]

EXAMINED: [Signature]
PASSED: [Signature]

August 14, 2007

ENGINEER OF BRIDGES AND STRUCTURES

TOTAL BILL OF MATERIAL

ITEM	UNIT	QUANTITY
Furnishing and Erecting Structural Steel	Pound	134860

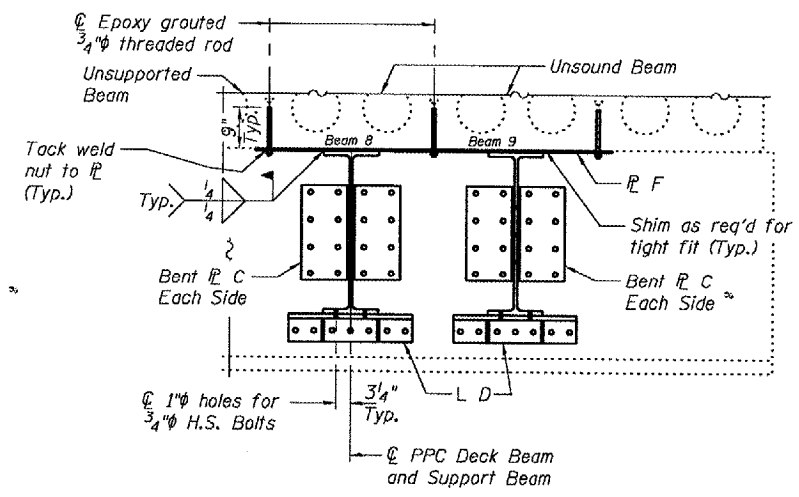
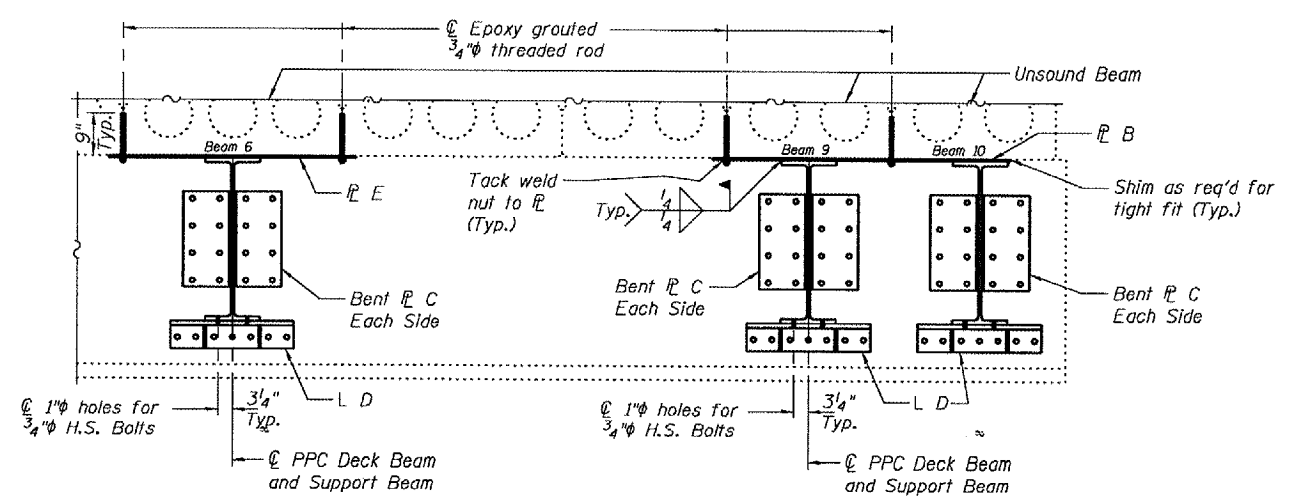
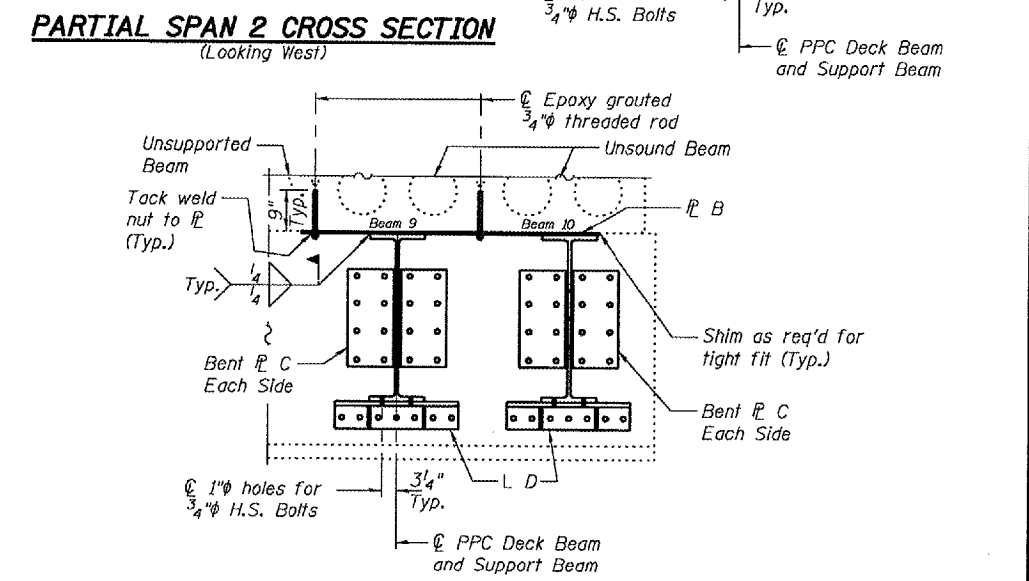
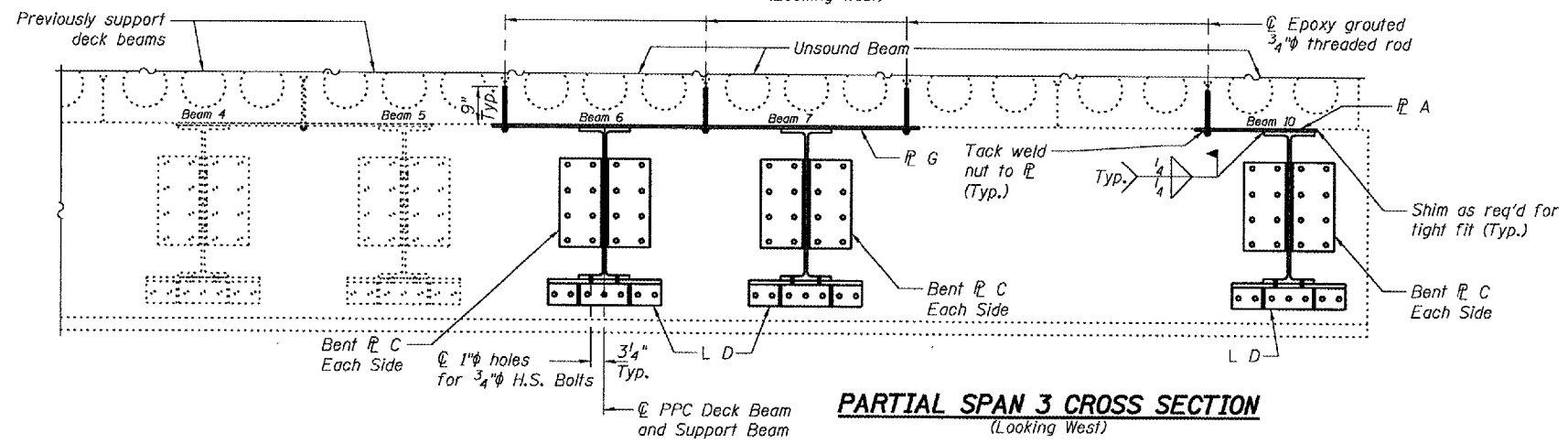
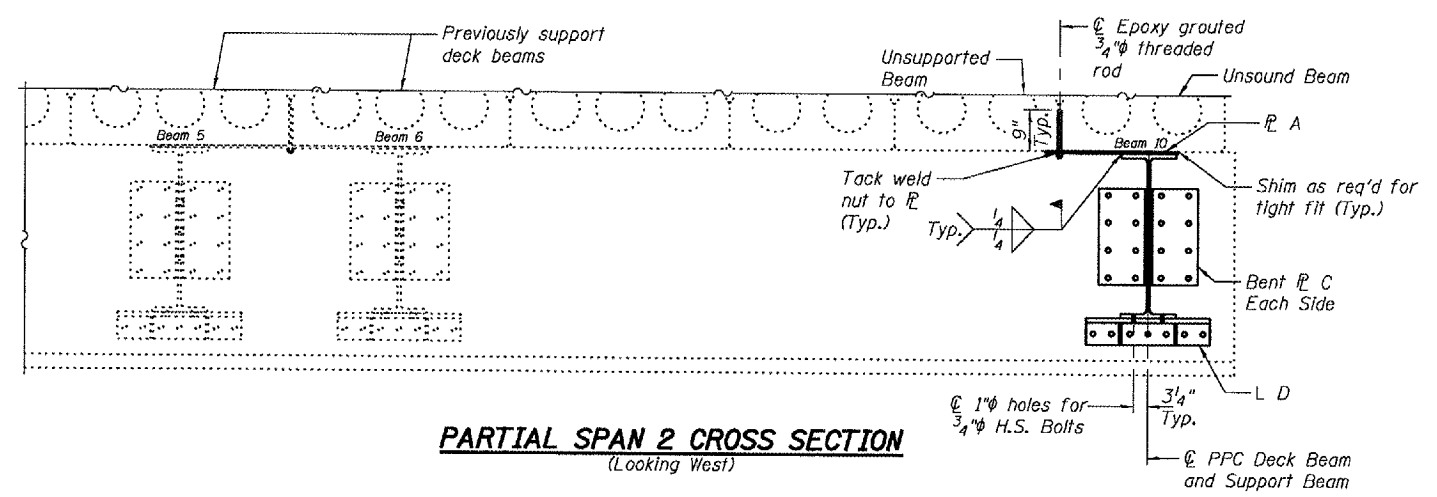
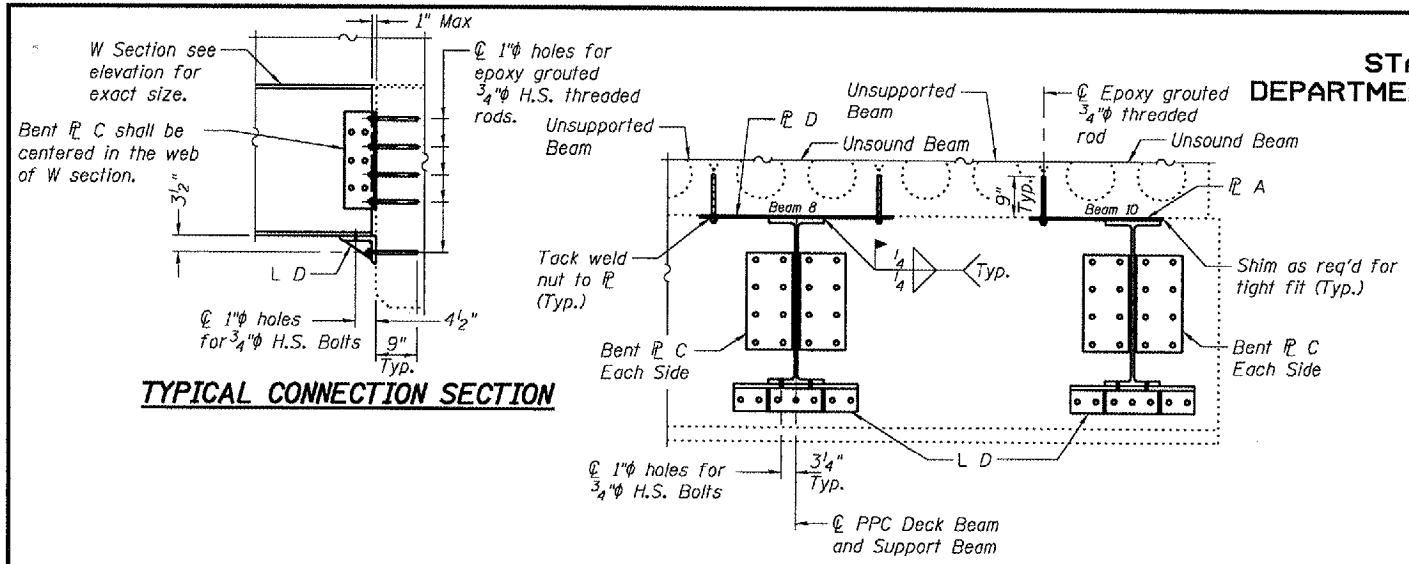
PLAN AND ELEVATION
F.A.P. RT. 761 (IL 108)
MACOUPIN COUNTY
SN 059-0034

Expires: November 30, 2008

STATE OF ILLINOIS
DEPARTMENT OF TRANSPORTATION

ROUTE NO.	SECTION	COUNTY	TOTAL SHEETS	SHEET NO.
		Macoupin	99	9
SHEET NO. 2 3 SHEETS				

Contract Number: 72B41



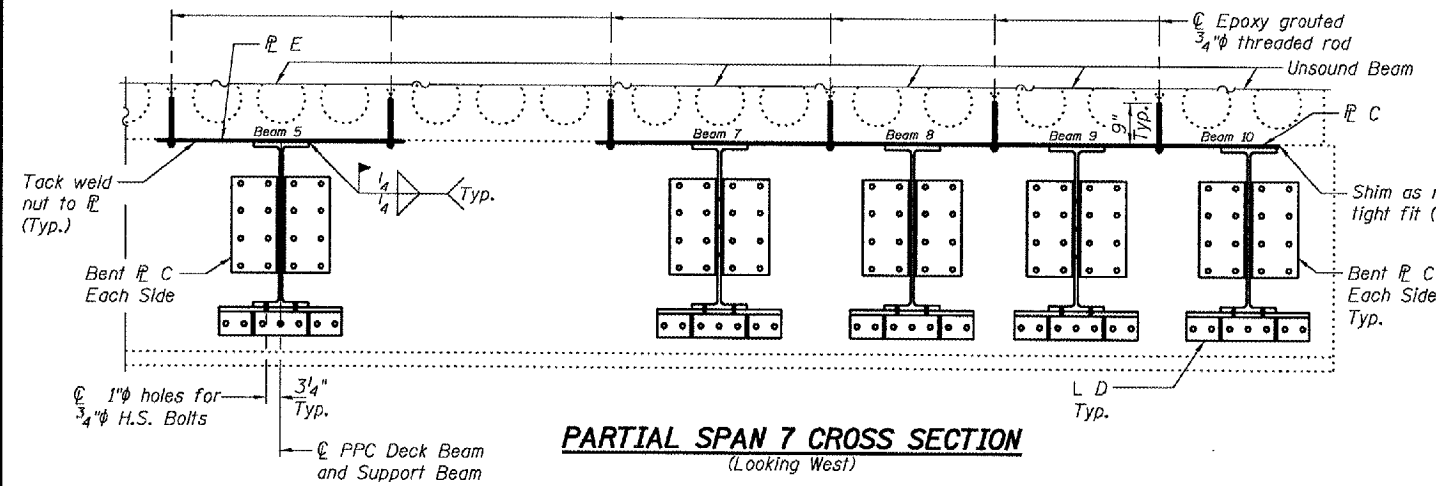
DESIGNED	D.A.B.	EXAMINED	August 14, 2007
CHECKED	V.H.V.	PASSED	<i>Ralph E. Anderson</i> REPAIR PLANS UNIT CHIEF ENGINEER OF BRIDGES AND STRUCTURES
DRAWN	Drew Christopher		
CHECKED	D.A.B., V.H.V.		

DECK CROSS SECTIONS
F.A.P. RT. 761 (IL 108)
MACOUPIN COUNTY
SN 059-0034

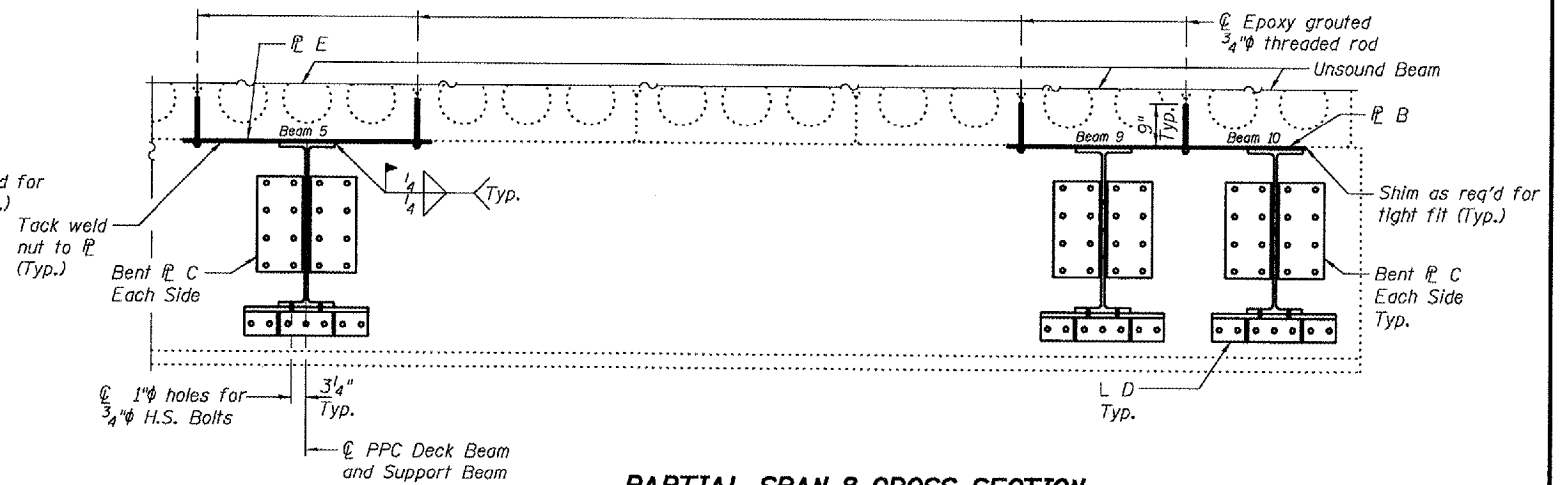
STATE OF ILLINOIS
DEPARTMENT OF TRANSPORTATION

ROUTE NO.	SECTION	COUNTY	TOTAL SHEETS	SHEET NO.
		Macoupin	9	9A
FED. ROAD DIST. NO. 7	ILLINOIS	FED. AID PROJECT		

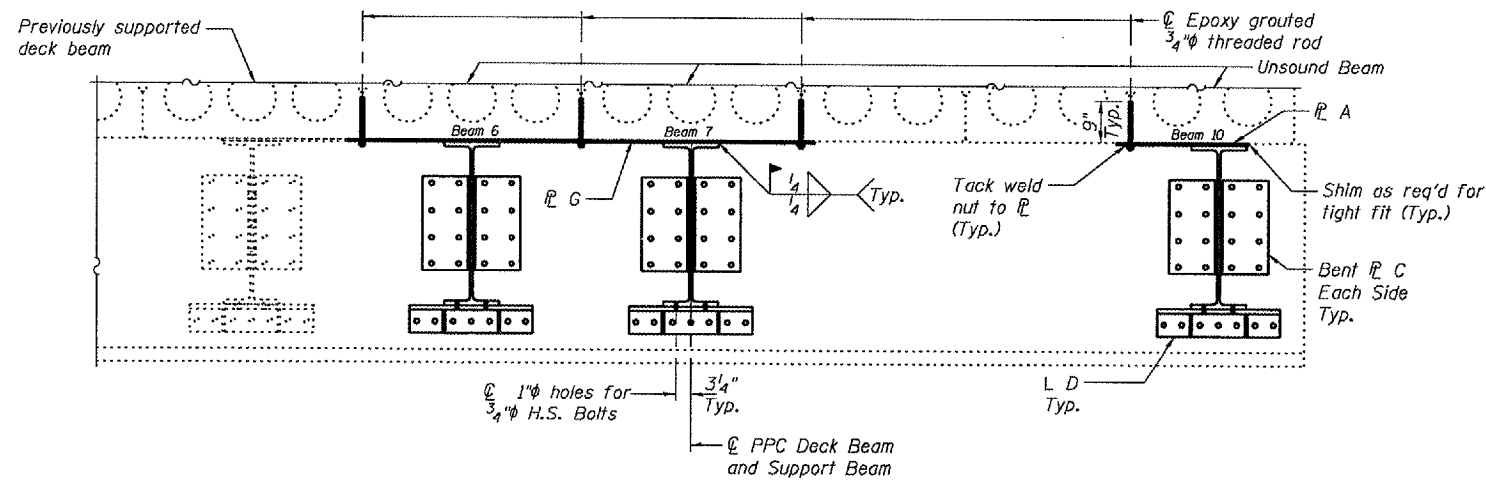
SHEET NO. 3
3 SHEETS
Contract Number: 72B41



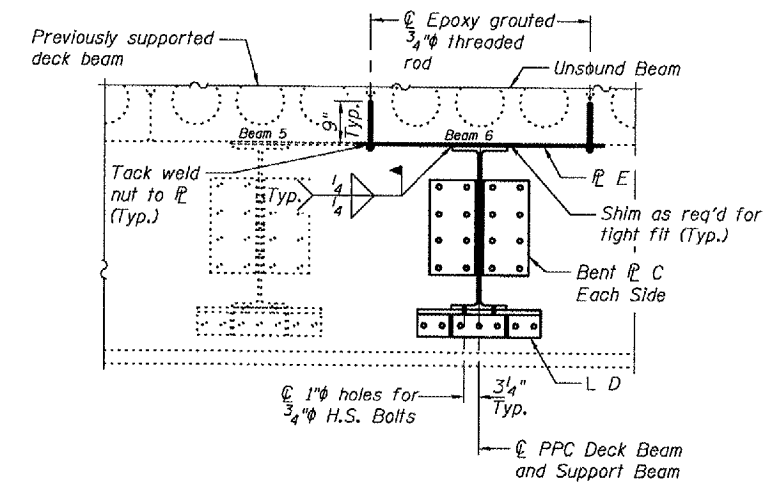
PARTIAL SPAN 7 CROSS SECTION
(Looking West)



PARTIAL SPAN 8 CROSS SECTION
(Looking West)



PARTIAL SPAN 9 CROSS SECTION
(Looking West)



PARTIAL SPAN 10 CROSS SECTION
(Looking West)

DESIGNED	D.A.B.
CHECKED	V.H.V.
DRAWN	Drew Christopher
CHECKED	D.A.B. V.H.V.

August 14, 2007
EXAMINED *Carl Ramsey*
REPAIR PLANS UNIT CHIEF
PASSED *Ralph E. Anderson*
ENGINEER OF BRIDGES AND STRUCTURES

DECK CROSS SECTIONS
F.A.P. RT. 761 (IL 108)
MACOUPIN COUNTY
SN 059-0034