



NOTES

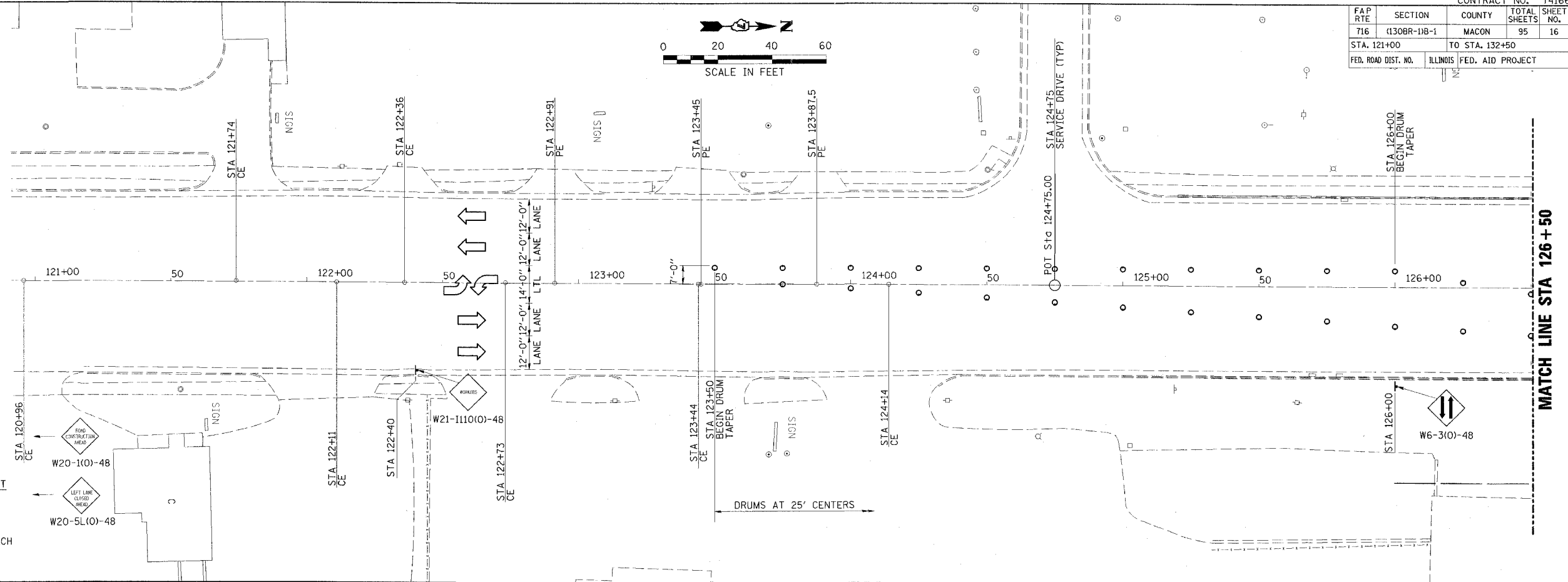
1. TRAFFIC CONTROL SHALL BE ERECTED AS SHOWN AND ACCORDING TO TRAFFIC CONTROL AND PROTECTION, STANDARD 701602. SEE STANDARD FOR LOCATIONS OF ITEMS NOT SHOWN HERE.
2. CONTRACTOR PROVIDE AND INSTALL LINEAR DELINEATION PANELS AND DOUBLE VERTICAL PANELS WITH STEADY BURNING LIGHTS FOR TEMPORARY CONCRETE BARRIER. SEE DETAILS ON SHEET 21.
3. THE LEFT TURN LANE IS CURRENTLY CLOSED DUE TO THE CONDITION OF THE EXISTING BRIDGE. TRAFFIC WILL NOT BE ALLOWED ON THIS PORTION OF THE STRUCTURE DURING THIS PROJECT.
4. THE CONTRACTOR SHALL COLLECT ALL EXISTING TRAFFIC CONTROL DEVICES USED FOR THE CURRENT LANE CLOSURES SUCH AS SIGNS, BARRICADES, DRUMS, ARROW BOARDS, ETC; DELIVER THEM TO THE IDOT MAINTENANCE YARD IN DECATUR; AND UNLOAD AND STACK THEM IN A LOCATION AS DETERMINED BY THE ENGINEER.
5. THE CONTRACTOR SHALL BE RESPONSIBLE FOR SUPPLYING, INSTALLING, MAINTAINING, AND REMOVING ALL TRAFFIC CONTROL ITEMS SHOWN ON SHEETS 16 THRU 20. THIS WORK WILL BE PAID FOR AS TRAFFIC CONTROL AND PROTECTION (SPECIAL).
6. SEE SHEET 21 FOR SECTIONS.
7. SEE SPECIAL PROVISIONS FOR ADDITIONAL TRAFFIC CONTROL REQUIREMENTS.

SCHEDULE OF QUANTITIES

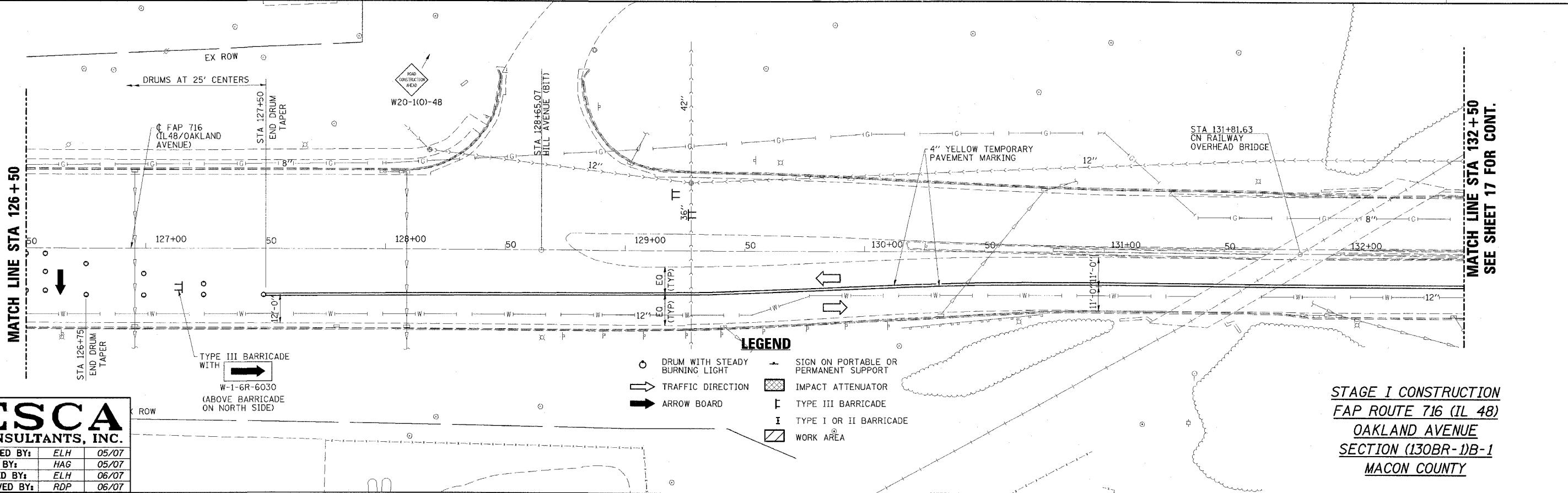
TEMPORARY CONCRETE BARRIER		
STATION TO	STATION	TOTAL FEET
134+00	137+50	350

IMPACT ATTENUATORS, TEMPORARY (NON-REDIRECTIVE), TEST LEVEL 2	
	- 2 EACH

CONTRACT NO. 74166				
FAP RTE	SECTION	COUNTY	TOTAL SHEETS	SHEET NO.
716	(130BR-1)B-1	MACON	95	16
STA. 121+00		TO STA. 132+50		
FED. ROAD DIST. NO.	ILLINOIS	FED. AID PROJECT		



MATCH LINE STA 126 + 50



MATCH LINE STA 126 + 50

MATCH LINE STA 132 + 50
SEE SHEET 17 FOR CONT.



DESIGNED BY:	ELH	05/07
DRAWN BY:	HAG	05/07
CHECKED BY:	ELH	06/07
APPROVED BY:	RDP	06/07

LEGEND

○	DRUM WITH STEADY BURNING LIGHT	+	SIGN ON PORTABLE OR PERMANENT SUPPORT
⇨	TRAFFIC DIRECTION	▨	IMPACT ATTENUATOR
⇨	ARROW BOARD	⊥	TYPE III BARRICADE
		I	TYPE I OR II BARRICADE
		▭	WORK AREA

STAGE I CONSTRUCTION
FAP ROUTE 716 (IL 48)
OAKLAND AVENUE
SECTION (130BR-1)B-1
MACON COUNTY