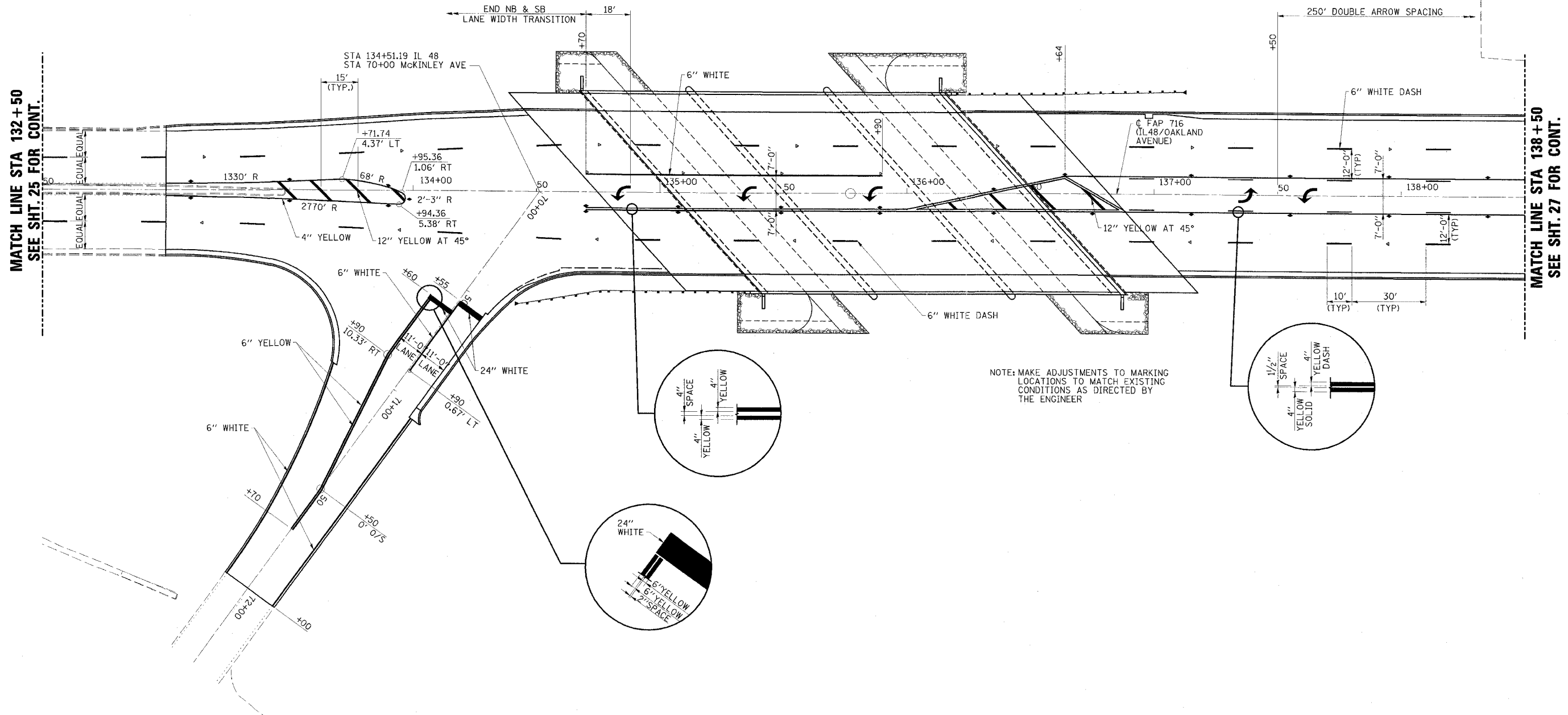
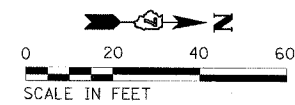




CONTRACT NO. 74166

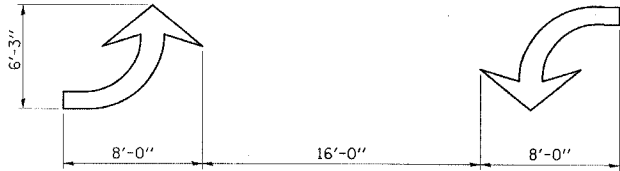
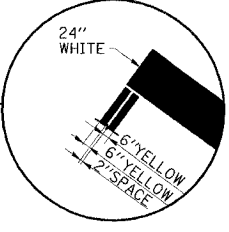
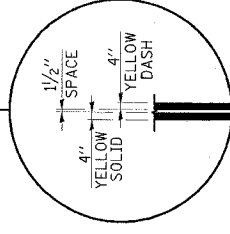
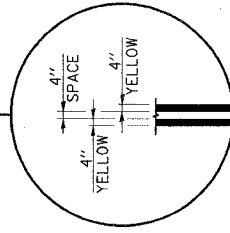
FAP RTE	SECTION	COUNTY	TOTAL SHEETS	SHEET NO.
716	(130BR-1)B-1	MACON	95	26
STA. 132+50		TO STA. 138+50		
FED. ROAD DIST. NO.	ILLINOIS	FED. AID PROJECT		



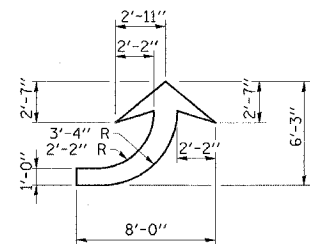
MATCH LINE STA 132+50
SEE SHT. 25 FOR CONT.

MATCH LINE STA 138+50
SEE SHT. 27 FOR CONT.

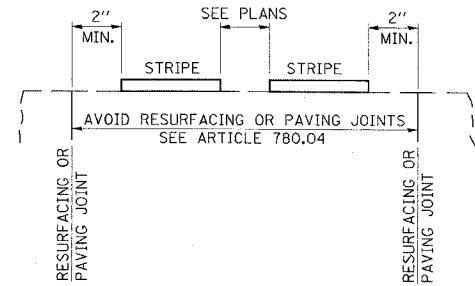
NOTE: MAKE ADJUSTMENTS TO MARKING LOCATIONS TO MATCH EXISTING CONDITIONS AS DIRECTED BY THE ENGINEER



TYPICAL DOUBLE TURN ARROWS (WHITE)



LEFT ARROW (WHITE)
AREA = 15.6 SQ FT



RELATIONSHIP OF STRIPES AND JOINTS

PAVEMENT MARKING AND MARKERS
FAP ROUTE 716 (IL 48)
OAKLAND AVENUE
SECTION (130BR-1)B-1
MACON COUNTY

ESCA
CONSULTANTS, INC.

DESIGNED BY:	ELH	05/07
DRAWN BY:	DWH	05/07
CHECKED BY:	ELH	06/07
APPROVED BY:	RDP	06/07