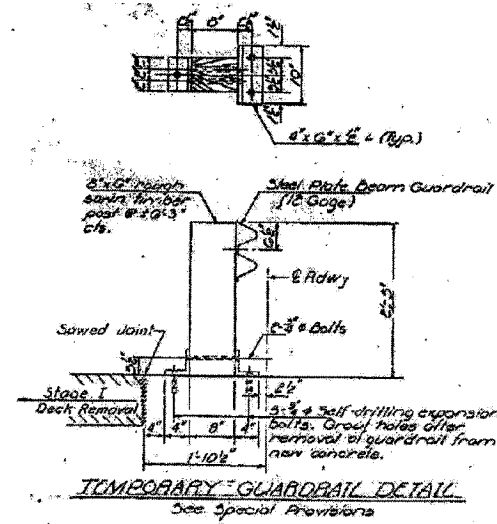


FOR INFORMATION ONLY

CONTRACT NO. 74166				
F&P RTE	SECTION	COUNTY	TOTAL SHEETS	SHEET NO.
716	(130BR-1B-1)	MACON	95	67
STA.		TO STA.		
FED. ROAD DIST. NO.	ILLINOIS	FED. AID PROJECT		

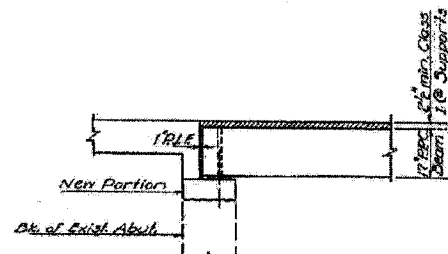
STATE OF ILLINOIS
DEPARTMENT OF TRANSPORTATION

STATE NO.	SECTION	COUNTY	TOTAL SHEETS	SHEET NO.
130BR	1B-1	MACON	95	67



Station	Depth	Soils	Water	Remarks	Dr. No.	W. Cont.
135+77.00	0					
	10	STIFF BLACK CLAY				
	15	VERY SOFT BLACK CLAY ALLOTHIN				
	20	VERY SOFT BLACK CLAY TILL				
	25	LOOSE CHASTE BLACK SAND FINE SAND				
	30	MEDIUM BROWN CHASTE CHASTE TO FINE SAND WITH SOME GRAVEL				
	35	VERY STIFF GRAY CLAY TILL				

11-Standard Penetration Test - blow per foot to 6th ft.
 C.N. - Soil Sample Container No. with 3/8\"/>



STATION 135+77.00
 REBUILT 1971 BY
 STATE OF ILLINOIS
 S.B.L. RT. 48 SEC. 130BR
 FA. PROJ. U-160(23)
 LOADING H320.

NAME PLATE
 (See Std. 2113)

DESIGNED: *Sweth T. Deane*
 CHECKED: *Joe Porter*
 DRAWN: *Jacobs*
 CHECKED: *J.P.*

SEPT. 10 1970
 EXAMINED: *[Signature]*
 DATED: *[Signature]*
 CHECKED: *[Signature]*

BORING
 S.B.L. RT. 48 SEC. 130BR
 MACON COUNTY
 STA. 135+77.00