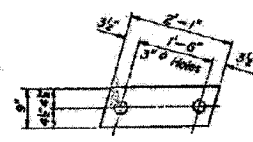


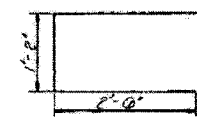
FOR INFORMATION ONLY

CONTRACT NO. 74166				
F&P RTE	SECTION	COUNTY	TOTAL SHEETS	SHEET NO.
716	(130BR-1)B-1	MACON	95	69
STA.		TO STA.		
FED. ROAD DIST. NO.		ILLINOIS FED. AID PROJECT		

DATE	NO.	BY	CHKD.	APP'D.	SHEET NO.
65	30BR	MACON	37	25	11 SHEETS

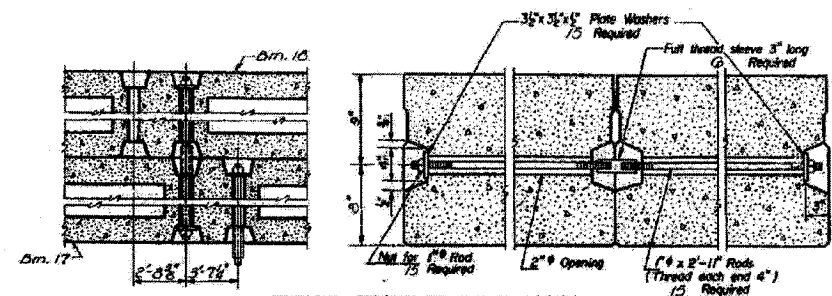


FABRIC BEARING PAD

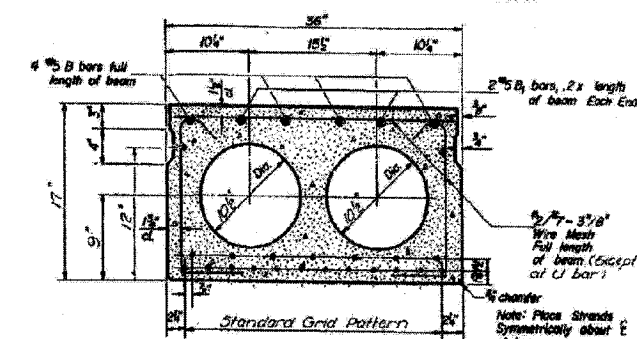


U BAR

STATE OF ILLINOIS
DEPARTMENT OF TRANSPORTATION

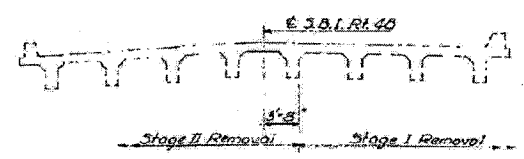


TYPICAL TRANSVERSE TIE ASSEMBLY



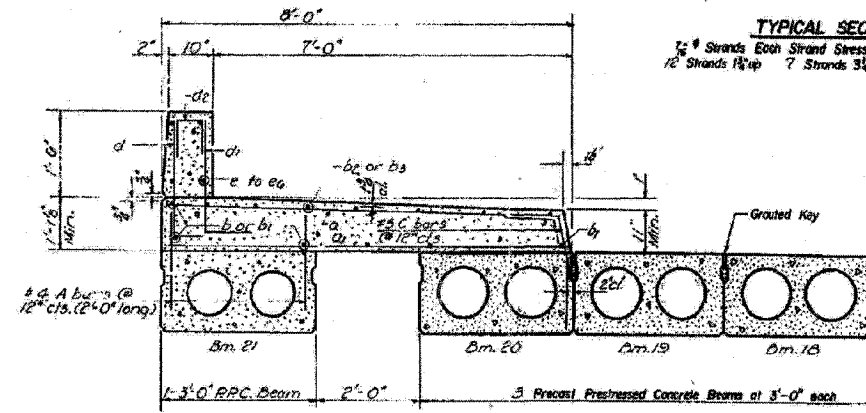
TYPICAL SECTION

7 # Strands Each Strand Stressed to 16,000 lbs.
12 Strands 1 1/2" up 7 Strands 3 1/4" up 2 Strands 12" up



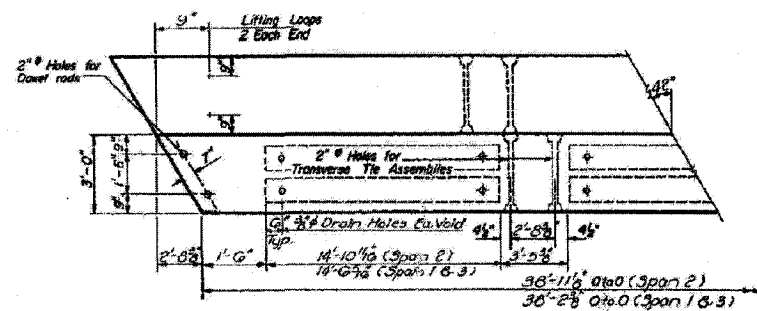
CROSS SECTION - EXISTING STRUCTURE
Looking North

Note: Dm. #21 is not tied transversely to the other Beams.

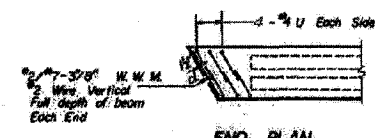


PARTIAL CROSS SECTION

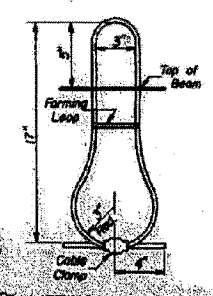
For detail of bar c see Sheet No. 5



PLAN



END PLAN



LIFTING LOOP DETAIL

DESIGNED: SIMON T. DESAI	SWT. 10
CHECKED: J. Jacobs	EXAMINED: [Signature]
DRAWN: JAMES R. CARRAN	PERMITS: [Signature]
CHECKED: JP	APPROVED: [Signature]

PD-1-R 11-19-65

GENERAL NOTES

Prestressing steel shall be non-galvanized, high strength, stress-relieved 7-wire strand. The nominal diameter shall be 7/8" and the nominal cross-sectional area shall be 0.109 sq. in. Lifting loops shall be 3/4" diameter 6 x 15 class wire rope with fiber core and shall have a minimum ultimate tensile strength of 29,000 lbs. The 1/2" rods in the transverse tie assembly shall be tightened to a snug fit and the threads set. Pockets that receive transverse tie bar on outside beam shall be filled with grout after transverse tie assembly is in place. Longitudinal shear keys shall be packed with a very dry mix of 2-1 sand and P.C. mortar. After beams have been drilled, holes for the dowel anchors shall be drilled into the sub-structure and the anchor dowels shall be grouted in place.

After fabrication the transverse tie assemblies (tie rods, nuts, washers and sleeves) shall be hot-dip galvanized in accordance with A.S.T.M. Specification A 153. Cost of reinforcement and accessories cast into the beam, of bearing girders, of armor angles, and of grouting longitudinal shear keys is included in unit price bid for Precast Prestressed Concrete Deck Beams.

Steel for dowel rods shall be ASTM A-306 or ASTM A-315.
Steel for transverse tie rods shall be ASTM A-306, Grade 70-80.

BILL OF MATERIAL

Precast Prestressed Concrete Deck Beams	Sq. Ft.	1504
---	---------	------

SUPERSTRUCTURE DETAILS
S.P.T.R. 48, SEC. 130BR
MACON COUNTY
STA. 135+27.00