

FOR INFORMATION ONLY

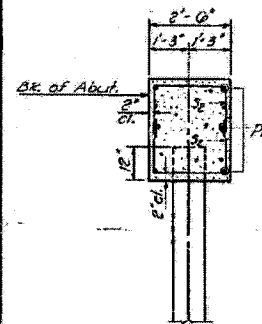
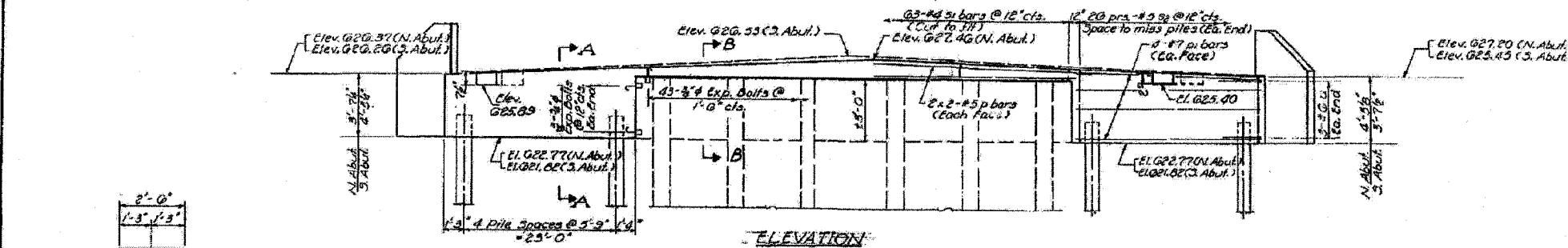
CONTRACT NO. 74166				
FAP RTE	SECTION	COUNTY	TOTAL SHEETS	SHEET NO.
716	(130BR-1B-1)	MACON	95	72
STA.		TO STA.		
FED. ROAD DIST. NO.	ILLINOIS	FED. AID PROJECT		

STATE OF ILLINOIS
DEPARTMENT OF TRANSPORTATION

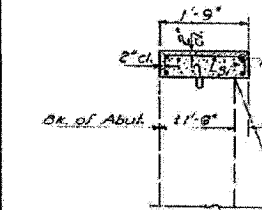
PROJECT NO.	SECTION	SHEET NO.	TOTAL SHEETS
1308	MACON 37	30	11
SHEET NO. 9			

PILE DATA

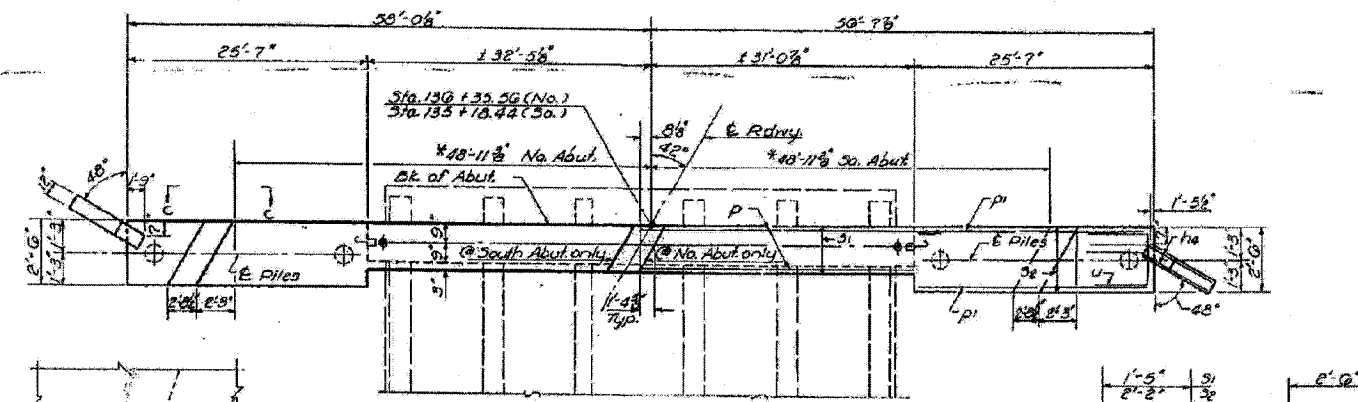
Type Concrete
Capacity 25 Tons
Std. Length 30 Ft.
No. Reqd. 12 + 1 test pile



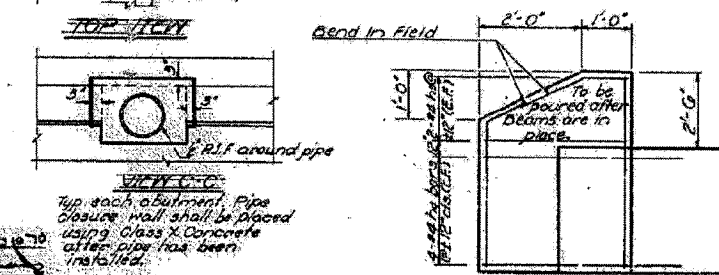
SEC. A-A



SEC. B-B



PLAN



TYPICAL DETAIL

2 ABUTMENTS
BILL OF MATERIAL

Bar	No.	Size	Length	Shape
1a	32	#4	4'-0"	—
1b	10	#4	2'-9"	—
p	10	#5	33'-9"	—
pi	32	#7	25'-3"	—
s1	120	#4	3'-11"	□
s2	208	#5	7'-8"	□
u	12	#6	7'-1"	□
vi	10	#4	0'-8"	—
vc	10	#4	5'-10"	—
Class X Concrete			Cu. Yds.	31.8
Reinforcement Bars			Lbs.	4580
Expansion Bolts (#4)			Each	96
Concrete Piles			Lin. Ft.	782
Test Pile (Concrete)			Each	1

DESIGNED	S. T. DEAN
CHECKED	J. P. JACOBS
DRAWN	JACOBS
CHECKED	J. P.

SECT. 101070
 EXAMINED
 H. C. BARNES
 DATE 10/10/70
 APPROVED
 R. H. JACOBS

* Dimensions include an allowance for the maximum overrun of the R.P.C. beams. For a lesser overrun increase the rest sidewalk width so that the outside R.P.C. beam is completely seated on the abutment.

Notes: All edges shall have 1/4" chamfer. Cut reinforcement bars in the field to provide opening for 12" pipe.

ABUTMENTS
 S.B.T. RT. 48 SEC. 130DR
 MACON COUNTY
 STA. 135+7100