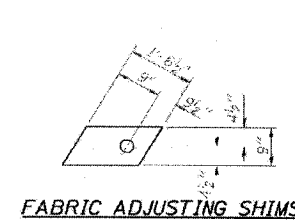
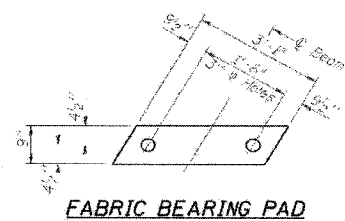


FOR INFORMATION ONLY

CONTRACT NO. 74166				
FAP	SECTION	COUNTY	TOTAL SHEETS	SHEET NO.
716	130BR-1B-1	MACON	95	79
STA.		TO STA.		
FED. ROAD DIST. NO.	ILLINOIS	FED. AID PROJECT		

STATE OF ILLINOIS
DEPARTMENT OF TRANSPORTATION

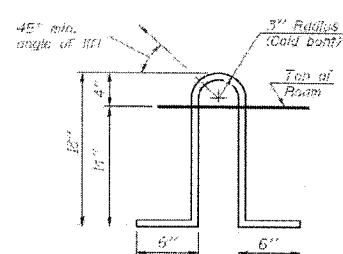
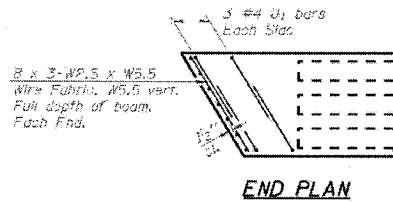
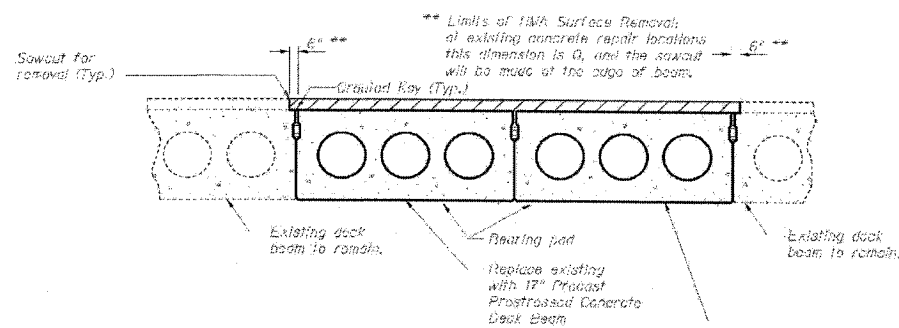
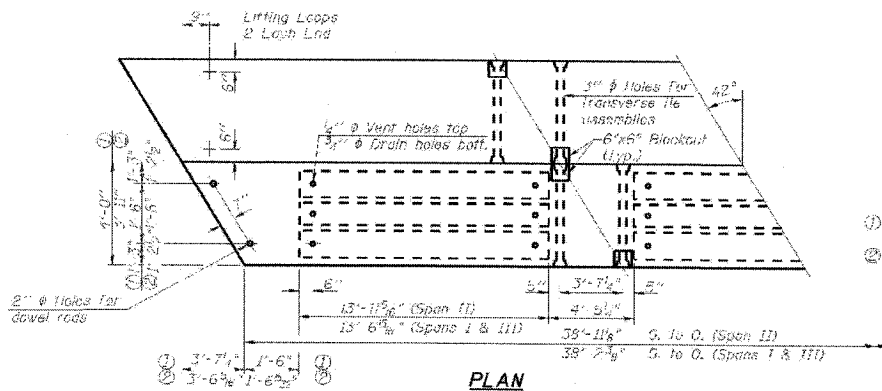
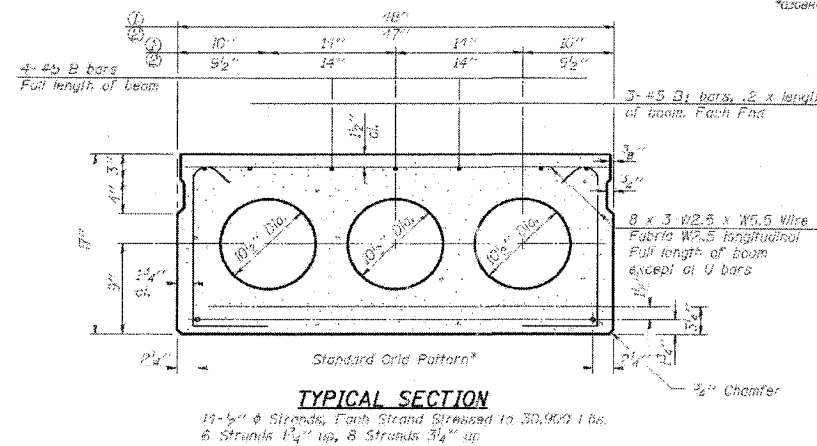
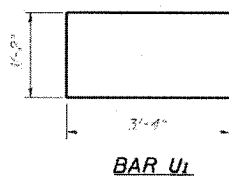
DATE	SECTION	DATE	DATE	DATE	SHEET NO.
7/16	MACON	22	9		5 SHEETS
CONTRACT NO. 74166					



*** TRANSVERSE PLACEMENT GUIDELINES**

1. Place strands symmetrically about centerline of beam.
2. The minimum distance from center to center of strands in all directions shall be 2".
3. The minimum clearance from strand to dove tail hole shall be 1/2".
4. The minimum clearance from strand to void shall be 1/2".

Vertical placement of strands shall not be adjusted to satisfy the above guidelines.



- ① Beam 16, Spans I & II
- ② Beam 13, Span I; Beam 17, Spans I, II, and III

NOTES

1. Prestressing steel shall be uncoated high strength, low relaxation 7-wire strand, Grade 270. The nominal diameter shall be 7/8" and the nominal cross-sectional area shall be 6.25 sq. in. Lifting loops shall be 2 #2 & 2TC #1 strands, as shown.

2. The 1" # rods in the transverse tie assembly shall be tightened to a snug fit and the threads cut. Non prestressing steel shall conform to ASTM A 706 (II MOD), Grade 60.

3. The bearing seat surfaces shall be adjusted by shimming to assure firm and even bearing. 1/2" fabric adjusting shims of the dimensions shown shall be provided for each bearing.

4. Keyway surfaces shall be cleaned to remove form oil or other bond breaking material prior to shipment of the beams. Cleaning shall be done by sandblasting the keyway areas between top of the beam and the bottom edge of the key.

5. Required Release Strength, P_{rel} , shall be 4,000 p.s.i.

6. The top surface of the beams shall be finished according to the IDOT Manual for Fabrication of Precast Prestressed Concrete Products.

7. The end strands of each beam end shall be given two coats of zinc dust spray or paint meeting the requirements of ASTM A700. The zinc dust spray or paint shall be applied before corrosion appears and allowed to dry according to manufacturer's specifications prior to another coat of zinc. This work shall be performed by the producer and finished with the cast of the beam.

8. Corrosion inhibitor, per Article 1020.02B(1)(2) of the Standard Specifications, shall be used in the concrete for precast prestressed concrete deck beams.

BILL OF MATERIAL

Item	Unit	Total
Precast Prestressed Conc. Deck Beams (17" Depth)	Sq. Ft.	910

DECK BEAMS
FAP ROUTE 716 (IL 48)
OAKLAND AVENUE
SECTION 130BR-1BR
MACON COUNTY
SN 058-0056

ESCA
CONSULTANTS, INC.

DESIGNED BY:	ELH	02/07
DRAWN BY:	JPC	02/07
CHECKED BY:	ELH	03/07
APPROVED BY:	RDP	03/07