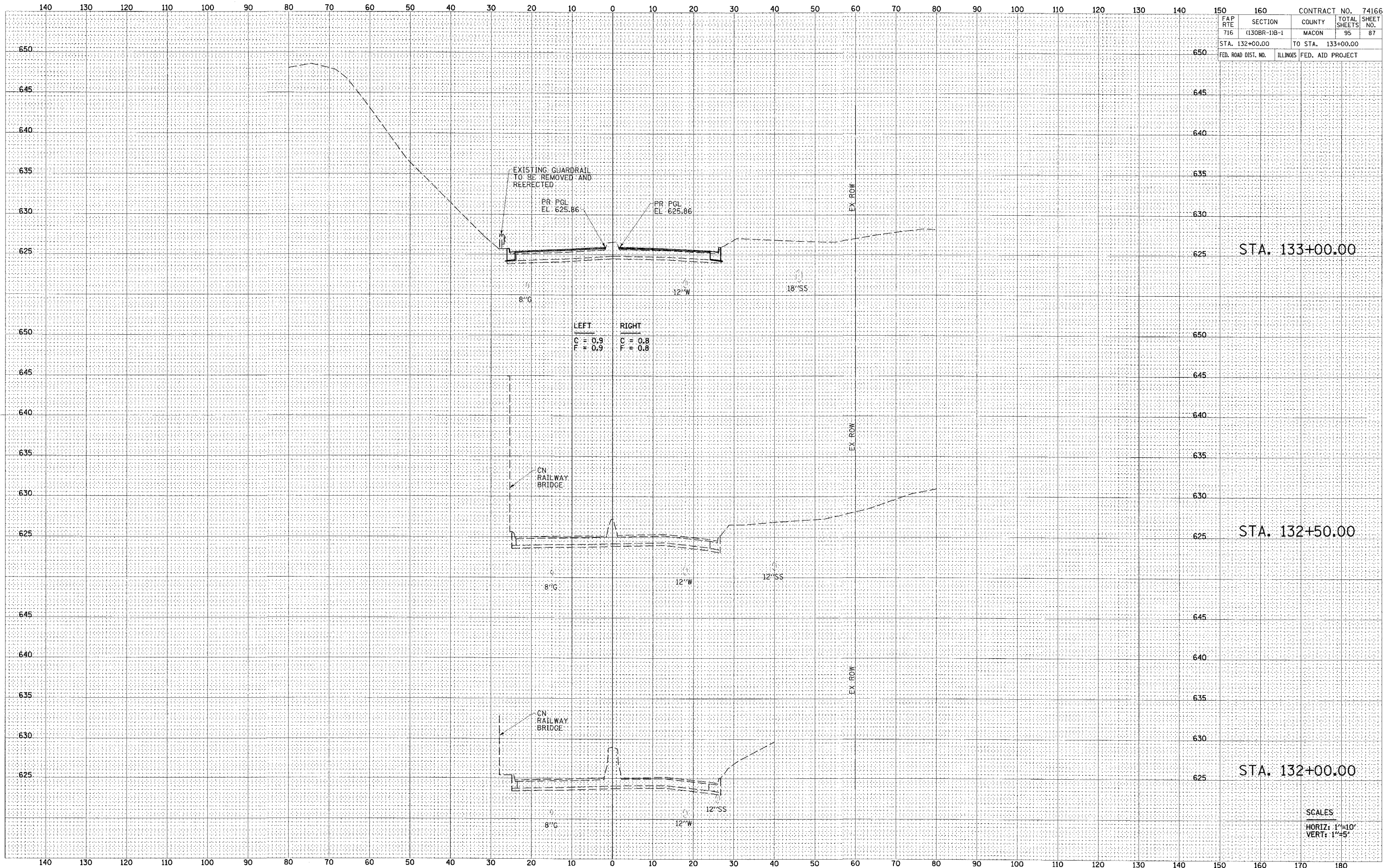




BY	DATE
FINAL SURVEY	SURVEYED
NOTE BOOK	PLOTTED
NO.	AREAS CHECKED

BY	DATE
ORIGINAL SURVEY	SURVEYED
NOTE BOOK	PLOTTED
NO.	AREAS CHECKED



FAP RTE	SECTION	COUNTY	TOTAL SHEETS	SHEET NO.
716	(130BR-1)B-1	MACON	95	87
STA. 132+00.00		TO STA. 133+00.00		
FED. ROAD DIST. NO.	ILLINOIS	FED. AID PROJECT		

FAP 716 (IL 48) CROSS SECTIONS
 STA. 132+00 TO STA. 133+00

SCALES
 HORIZ: 1"=10'
 VERT: 1"=5'