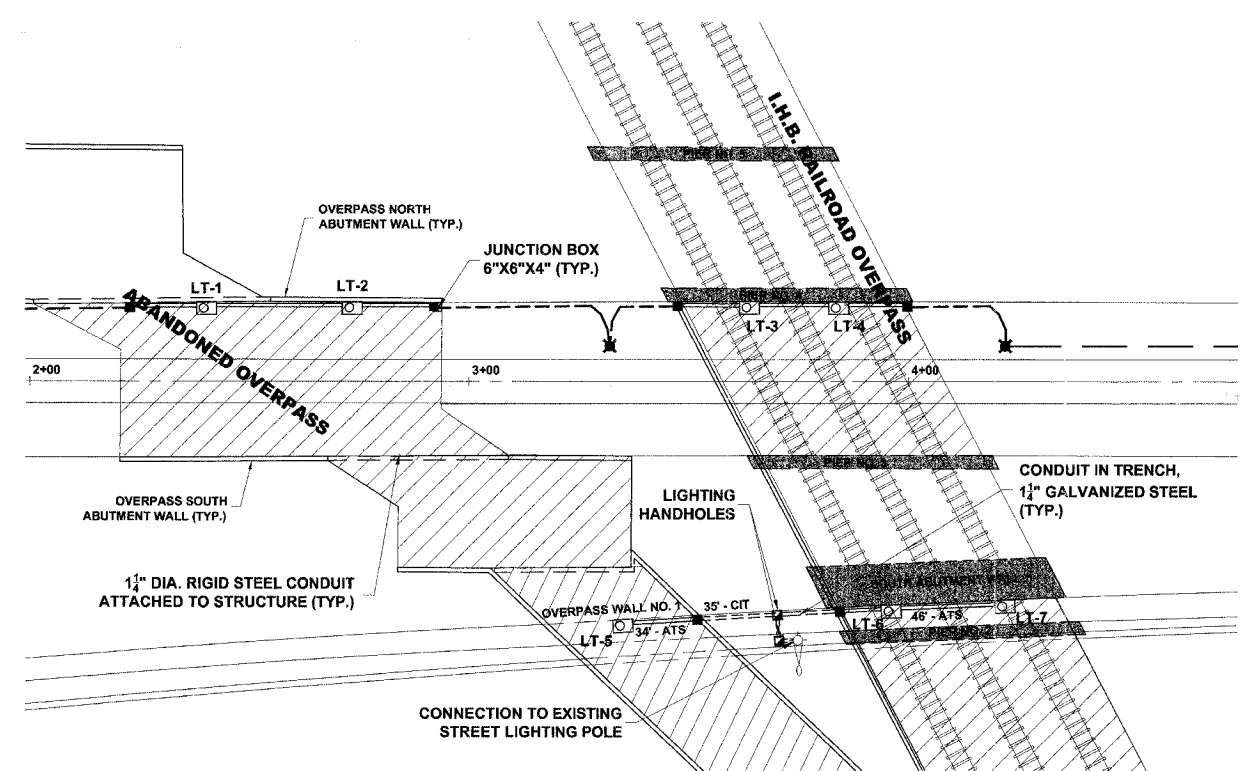
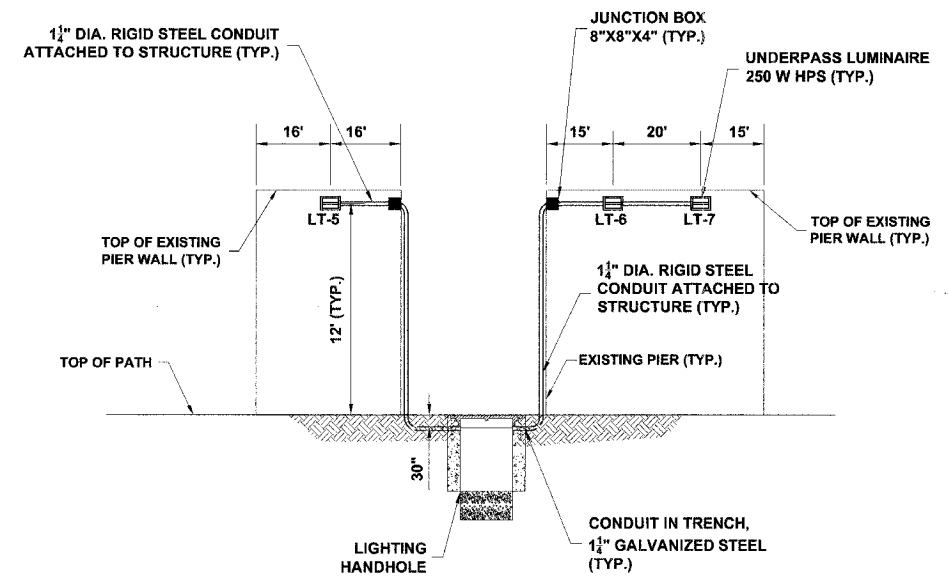


ROUTE NO.	SECTION	COUNTY	TOTAL SHEETS	SHEET NO.
		COOK	15	7
ILLINOIS PROJECT				
VILLAGE SECTION 06-00133-00-BT				
CONTRACT NO. 83933				



**PLAN**

AT SOUTH SIDE OF OVERPASS WALL NO. 1 AND SOUTH SIDE OF SOUTH ABUTMENT WALL



**UNDERPASS LIGHTING DETAILS**

AT SOUTH SIDE OF OVERPASS WALL NO. 1 AND SOUTH SIDE OF SOUTH ABUTMENT WALL

Drawing file: W:\Projects\06003385 - Prairie Path Improv\Site Plan.dwg May 22, 2007 - 2:31pm



♦ Civil Engineers  
 ♦ Municipal Consultants  
 ♦ Established 1911  
 9933 Roosevelt Road  
 Westchester, Illinois 60154-2780  
 Phone: 708/865-0300  
 Fax: 708/865-1212

**ILLINOIS PRAIRIE PATH IMPROVEMENTS  
VILLAGE OF BELLWOOD, ILLINOIS**

**OVERPASS LIGHTING PLAN AND LIGHTING DETAILS**

SCALE: 1"=20'H. & 1"=4'V	SHEET
DRAWN BY: MK	7
BOOK NO.: AERIAL	15
AS PER IDOT REVIEW 5/22/07	DATE: 2/09/07
REVISION:	E.H.E. NO.: 080-03-08580