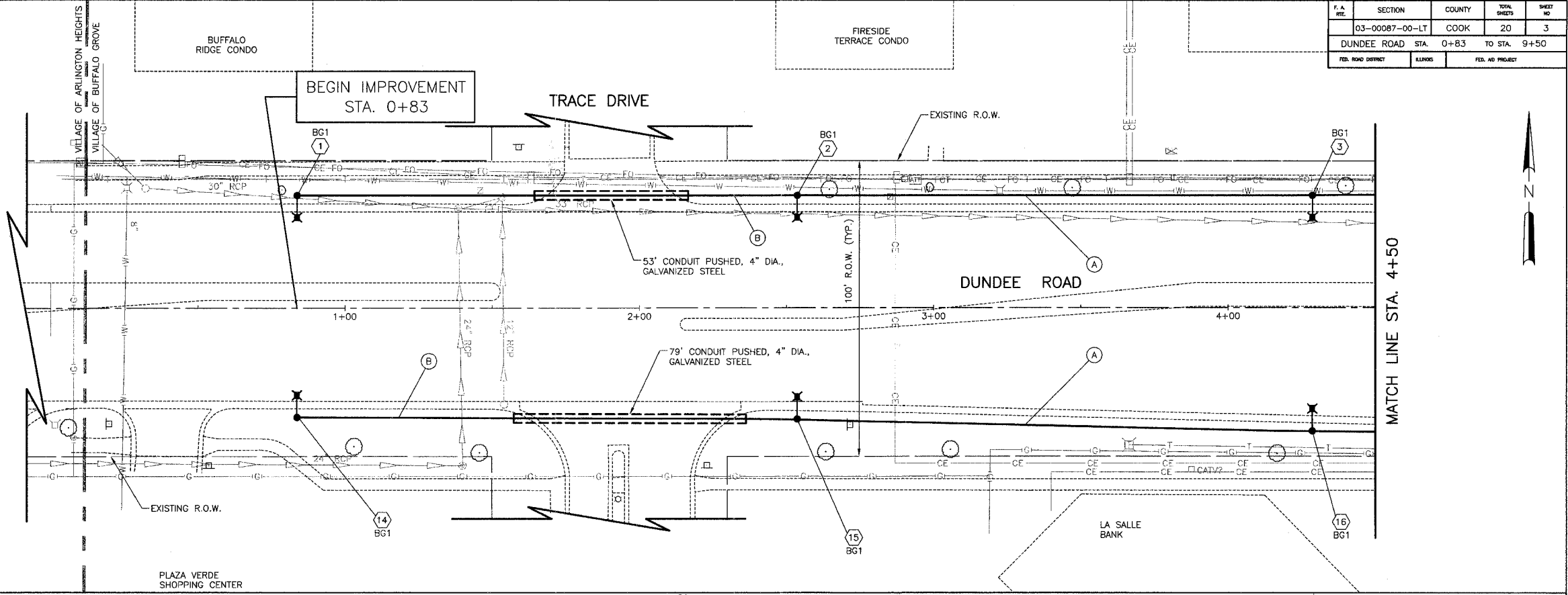


T.A. NO.	SECTION	COUNTY	TOTAL SHEETS	SHEET NO.
03-0087-00-LT		COOK	20	3
DUNDEE ROAD STA. 0+83 TO STA. 9+50				
FED. ROAD DISTRICT	ILLINOIS	FED. AID PROJECT		

POLE NUMBER	CONTROLLER NO.	STATION	OFFSET	LIGHT CIRCUIT	FOUNDATION TYPE
1	BG1	0+84	3' B.C.	B	OS
2	BG1	2+54	3' B.C.	A	24
3	BG1	4+29	3' B.C.	B	24
14	BG1	0+84	3' B.C.	A	24
15	BG1	2+54	3' B.C.	B	24
16	BG1	4+29	3' B.C.	A	24

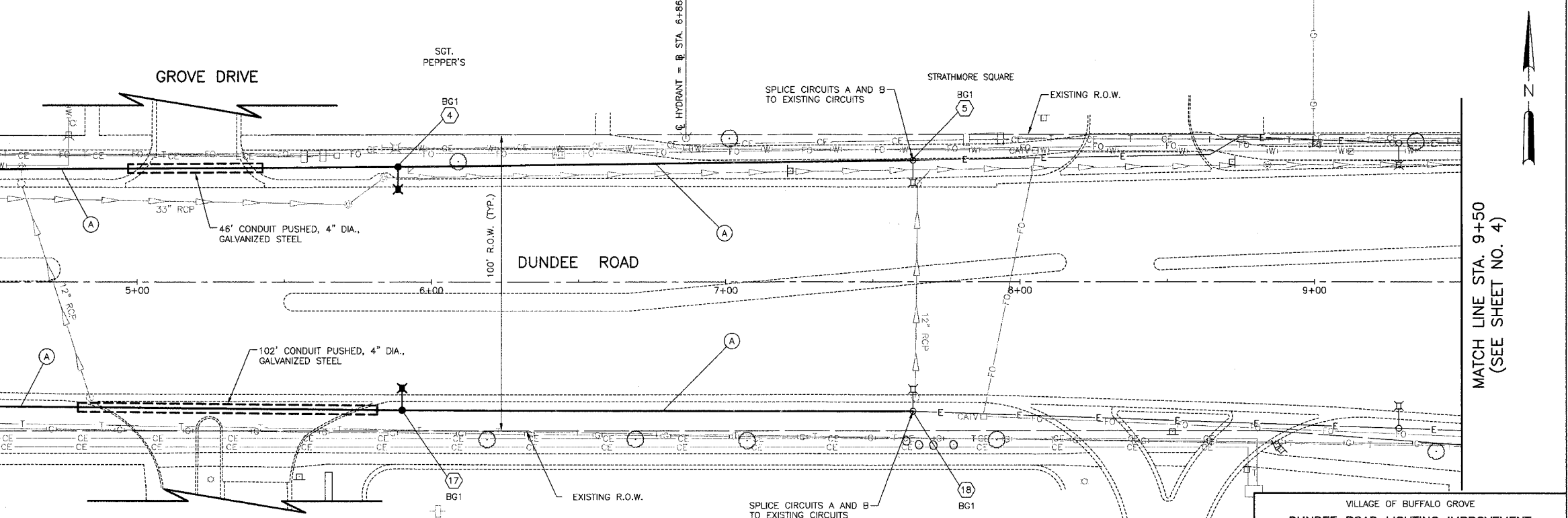
FOUNDATION TYPE
 24 = LIGHT POLE FOUNDATION, 24" DIAMETER
 OS = LIGHT POLE FOUNDATION, 24" DIAMETER, OFFSET
 SP = LIGHT POLE FOUNDATION (SPECIAL)
 EX = EXISTING FOUNDATION

- (A) UNIT DUCT, WITH 4-1/2" NO. 6 AND 1-1/2" NO. 6 GROUND, 600V (EPR-TYPE RHW), 2" DIA., POLYETHYLENE
- (B) UNIT DUCT, WITH 2-1/2" NO. 6 AND 1-1/2" NO. 6 GROUND, 600V (EPR-TYPE RHW), 2" DIA., POLYETHYLENE
- (C) UNIT DUCT, WITH 4-1/2" NO. 4 AND 1-1/2" NO. 4 GROUND, 600V (EPR-TYPE RHW), 2" DIA., POLYETHYLENE
- (D) UNIT DUCT, WITH 2-1/2" NO. 4 AND 1-1/2" NO. 4 GROUND, 600V (EPR-TYPE RHW), 2" DIA., POLYETHYLENE



LEGEND

- PROPOSED BUFFALO GROVE STANDARD LIGHTING UNIT-LIGHT POLE, STEEL, 35 FT. M.H., 6 FT. MAST ARM WITH LUMINAIRE, SODIUM VAPOR, HORIZONTAL MOUNT, 250 WATT
- PROPOSED BUFFALO GROVE LIGHTING UNIT-LIGHT POLE, STEEL, 30 FT. M.H., 6 FT. MAST ARM WITH LUMINAIRE, SODIUM VAPOR, HORIZONTAL MOUNT, 100 WATT
- EXISTING STANDARD BUFFALO GROVE LIGHTING UNIT
- EXISTING STANDARD ARLINGTON HEIGHTS LIGHTING UNIT
- EXISTING UTILITY POLE MOUNTED LIGHTING UNIT TO BE REMOVED BY OTHERS
- EXISTING LIGHTING UNIT TO BE REMOVED
- EXISTING LIGHTING UNIT TO BE RELOCATED
- EXISTING LIGHTING UNIT TO BE REMAIN REMOVAL OF EXISTING LUMINAIRE AND SALVAGE INSTALL LUMINAIRE, SODIUM VAPOR, HORIZONTAL MOUNT, 250 WATT, INSTALL BASE COVER, LIGHT POLE.
- PROPOSED LIGHTING CONTROLLER (SPECIAL)
- PROPOSED HANDHOLE
- PROPOSED UNIT DUCT, PUSHED OR TRENCHED AS NOTED
- EXISTING CABLE IN CONDUIT
- PROPOSED RIGID GALVANIZED STEEL CONDUIT, PUSHED, OF THE SIZE SPECIFIED
- BUFFALO GROVE LIGHTING CONTROLLER NUMBER 2
- LIGHT POLE NUMBER 1
- EXISTING SIDEWALK TO BE REMOVED AND REPLACED WITH P.C.C. SIDEWALK, 5"



POLE NUMBER	CONTROLLER NO.	STATION	OFFSET	LIGHT CIRCUIT	FOUNDATION TYPE
4	BG1	5+90	3' B.C.	A	24
5	BG1	EX. VILLAGE ID # 9950		B	EX
17	BG1	5+90	3' B.C.	B	24
18	BG1	EX. VILLAGE ID # 9951		A	EX

NO.	DATE	DESCRIPTION

VILLAGE OF BUFFALO GROVE
DUNDEE ROAD LIGHTING IMPROVEMENT
LIGHTING PLAN
 DUNDEE ROAD
 STA. 0+83 TO STA. 9+50

DESIGNED BY: S.J.C.
 CHECKED BY: D.N.M.
 DATE: 07/10/2007

SCALE IN FEET