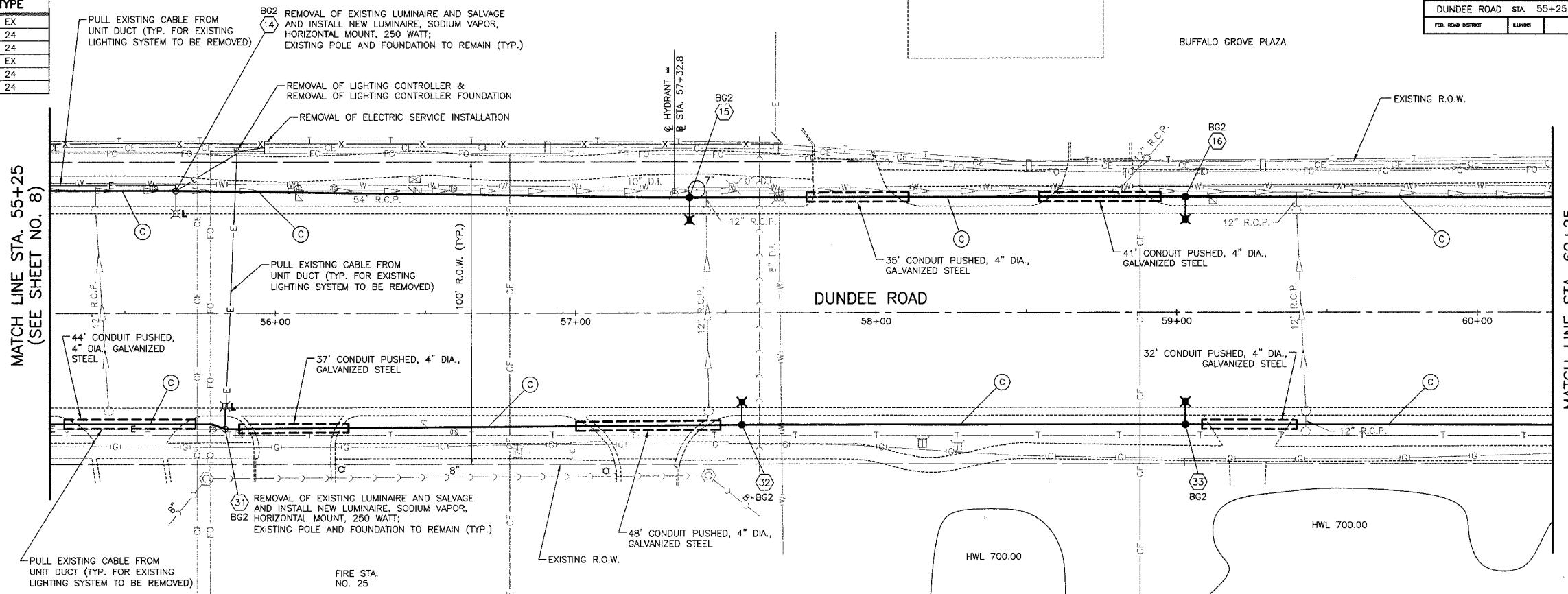


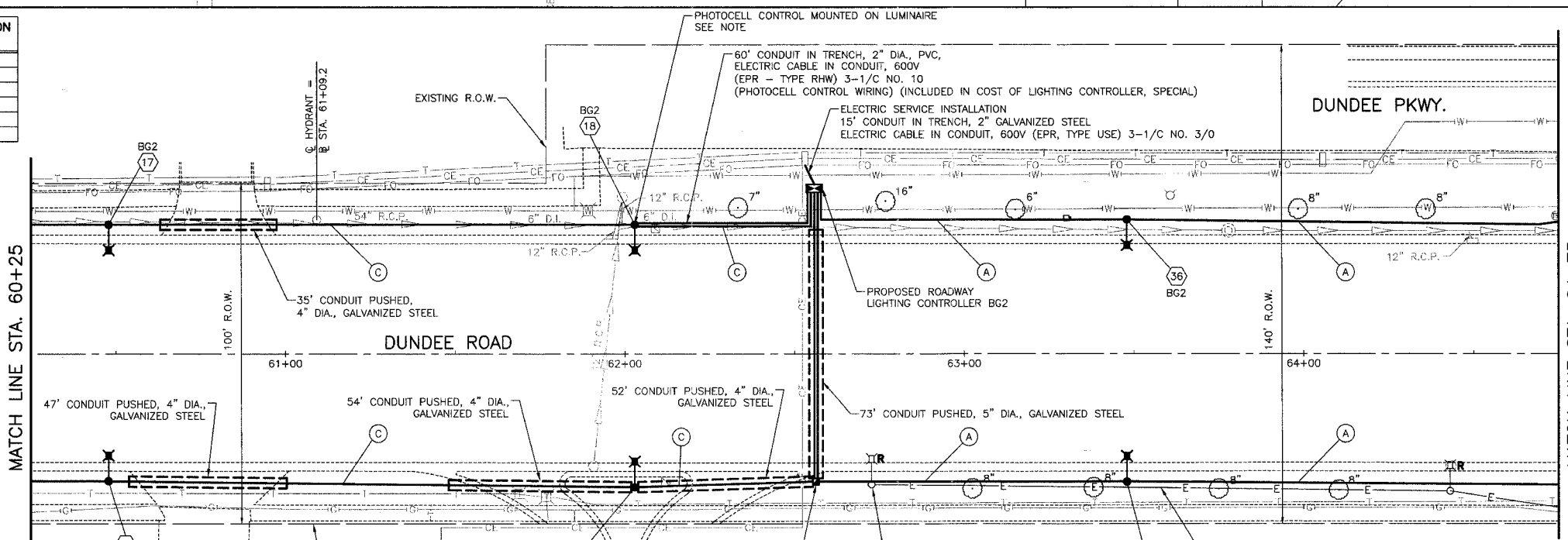
T.A. NO.	SECTION	COUNTY	TOTAL SHEETS	SHEET NO.
03-0087-00-LT	COOK	COOK	20	9
DUNDEE ROAD STA. 55+25 TO STA. 65+25				
FED. HIGH DISTRICT	ILLINOIS	FED. AID PROJECT		

POLE NUMBER	CONTROLLER NO.	STATION	OFFSET	LIGHT CIRCUIT	FOUNDATION TYPE
14	BG2	55+67	EXISTING	B	EX
15	BG2	57+38	3' B.C.	A	24
16	BG2	59+03	3' B.C.	B	24
31	BG2	55+83	EXISTING	D	EX
32	BG2	57+55	3' B.C.	C	24
33	BG2	59+03	3' B.C.	D	24

**FOUNDATION TYPE**  
 24 = LIGHT POLE FOUNDATION, 24" DIAMETER  
 OS = LIGHT POLE FOUNDATION, 24" DIAMETER, OFFSET  
 SP = LIGHT POLE FOUNDATION (SPECIAL)  
 EX = EXISTING FOUNDATION



POLE NUMBER	CONTROLLER NO.	STATION	OFFSET	LIGHT CIRCUIT	FOUNDATION TYPE
17	BG2	60+48	3' B.C.	A	24
18	BG2	62+03	3' B.C.	B	24
36	BG2	63+48	3' B.C.	E	24
34	BG2	60+48	3' B.C.	C	24
35	BG2	62+03	3' B.C.	D	24
49	BG2	63+48	3' B.C.	G	24



- (A) UNIT DUCT, WITH 4-1/C NO. 6 AND 1-1/C NO. 6 GROUND, 600V (EPR-TYPE RHW), 2" DIA., POLYETHYLENE
- (B) UNIT DUCT, WITH 2-1/C NO. 6 AND 1-1/C NO. 6 GROUND, 600V (EPR-TYPE RHW), 2" DIA., POLYETHYLENE
- (C) UNIT DUCT, WITH 4-1/C NO. 4 AND 1-1/C NO. 4 GROUND, 600V (EPR-TYPE RHW), 2" DIA., POLYETHYLENE
- (D) UNIT DUCT, WITH 2-1/C NO. 4 AND 1-1/C NO. 4 GROUND, 600V (EPR-TYPE RHW), 2" DIA., POLYETHYLENE

NOTE: ALL PHOTOCELL MATERIALS AND INSTALLATION ARE INCIDENTAL TO LIGHTING CONTROLLER

VILLAGE OF BUFFALO GROVE  
**DUNDEE ROAD LIGHTING IMPROVEMENT**  
**LIGHTING PLAN**  
 DUNDEE ROAD  
 STA. 55+25 TO STA. 65+25

NO.	REVISIONS

DESIGNED BY: S.J.C.  
 CHECKED BY: D.N.M.  
 DATE: 07/10/2007

SCALE IN FEET