

SEE SHT. NO 2 FOR INDEX OF SHEETS  
SEE SHT. NO 2 FOR HIGHWAY STANDARDS

STATE OF ILLINOIS  
DEPARTMENT OF TRANSPORTATION  
DIVISION OF HIGHWAYS

**PLANS FOR PROPOSED  
FEDERAL AID CMAQ PROJECT**

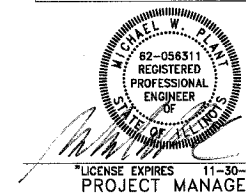
**MONARCH PEDESTRIAN PATH  
187TH STREET/186TH PLACE  
LORETTO LANE TO WILLOW AVENUE  
SIDEWALK IMPROVEMENTS**

**PROJECT NO.: CMM-8003(622)  
SECTION NO.: 06-00031-00-SW  
COOK COUNTY  
JOB NO.: C-91-301-06**

F.A. ROUTE NO.	SECTION	COUNTY	TOTAL SHEETS	SHEET NO.
06-00031-00-SW		COOK	8	1

ILLINOIS PROJECT  
C-91-301-06  
CONTRACT NO. 83960

CMM-8003 (622)



DATE: 6-07-07

STATE OF ILLINOIS  
DEPARTMENT OF TRANSPORTATION  
DIVISION OF HIGHWAYS

APPROVED: *[Signature]*  
CITY OF COUNTRY CLUB HILLS  
MAYOR

PASSED: *[Signature]* July 17-2007  
DISTRICT 1 ENGINEER OF  
LOCAL ROADS & STREETS

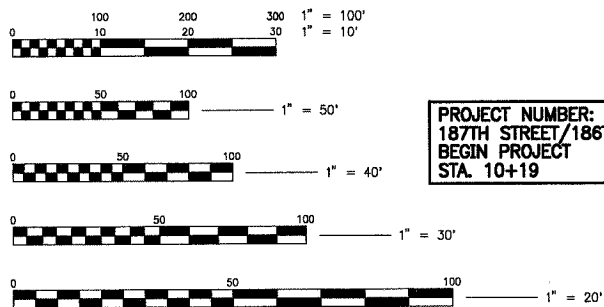
RELEASING FOR BID  
BASED ON LIMITED  
REVIEW: *[Signature]* July 17, 2007  
DEPUTY DIRECTOR OF  
HIGHWAYS, REGION 1 ENGINEER



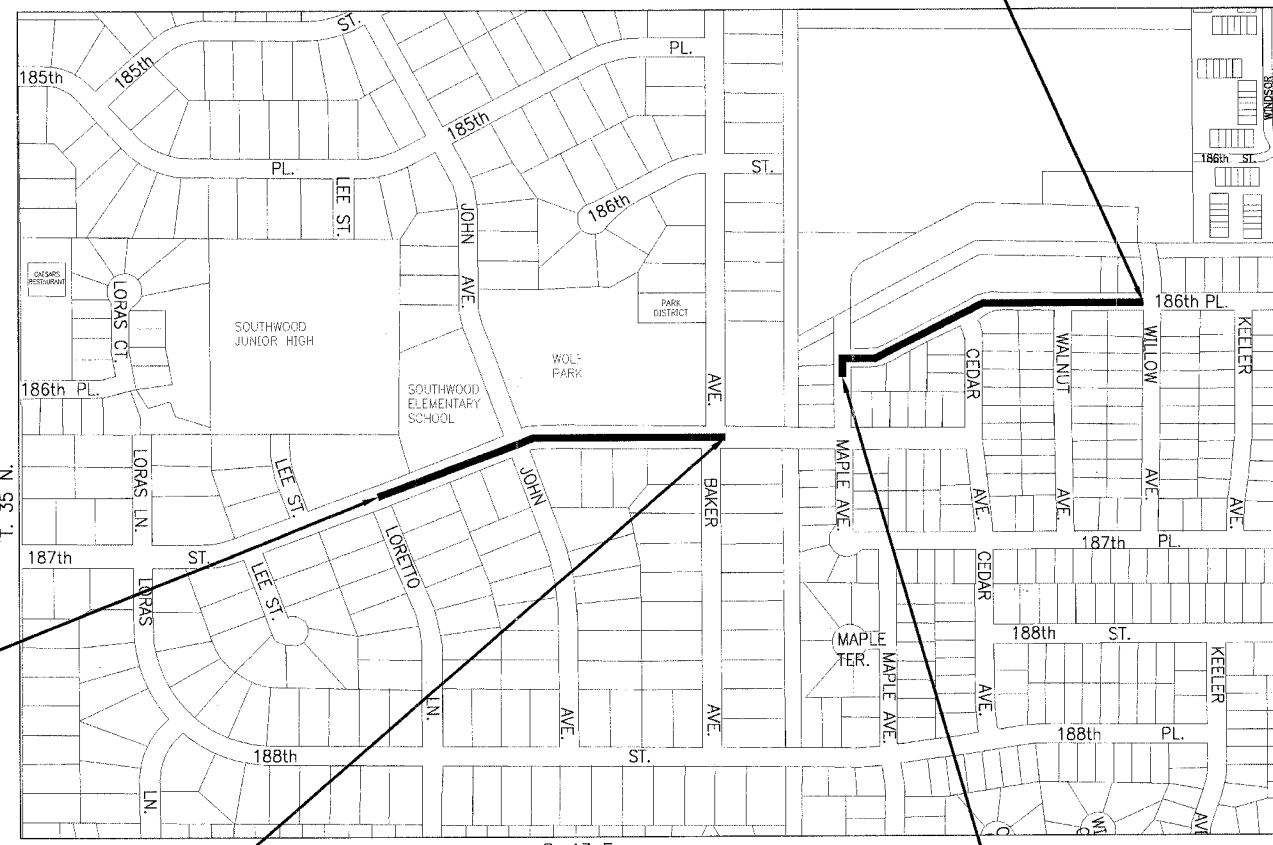
**THIS PROJECT IS  
LOCATED WITHIN  
THE CITY OF  
COUNTRY CLUB HILLS**



CALL 48 HOURS BEFORE YOU DIG



FULL SIZE PLANS HAVE BEEN PREPARED USING STANDARD  
ENGINEERING SCALES. REDUCED SIZED PLANS WILL NOT  
CONFORM TO STANDARD SCALES. IN MAKING MEASUREMENTS  
ON REDUCED SIZE PLANS, THE ABOVE SCALES SHALL BE USED.



PROJECT NUMBER: CMM-8003(621)  
187TH STREET/186TH PLACE  
BEGIN PROJECT  
STA. 10+19

PROJECT NUMBER: CMM-8003(621)  
187TH STREET/186TH PLACE  
BEGIN OMISSION  
STA. 20+10

PROJECT NUMBER: CMM-8003(621)  
187TH STREET/186TH PLACE  
END PROJECT  
STA. 36+50

PROJECT NUMBER: CMM-8003(621)  
187TH STREET/186TH PLACE  
END OMISSION  
STA. 27+32

**NO SCALE**  
GROSS LENGTH OF IMPROVEMENT = 2,631 LIN. FT. OR 0.498 MILES  
NET LENGTH OF IMPROVEMENT = 1,909 LIN. FT. OR 0.362 MILES  
NET LENGTH OF OMISSION = 722 LIN. FT. OR 0.137 MILES

BAXTER & WOODMAN, INC.  
STATE OF ILLINOIS - PROFESSIONAL DESIGN FIRM  
LICENSE NO. - 184-001121 - EXPIRES 4/30/2009

CONTRACT NO. 83960

Crystal Lake, Illinois  
815.459.1260  
(OFFICE WHICH PREPARED PLANS)

Mokena, Illinois  
708.478.2090

Burlington, Wisconsin  
262.763.7834

DeKalb, Illinois  
815.787.3111



Grayslake, Illinois  
847.223.5088

Rockford, Illinois  
815.489.1551

Plainfield, Illinois  
815.609.7425

Itasca, Illinois  
630.773.1870

Madison, Wisconsin  
608.347.1542

I.D.O.T. FEDERAL AID DESIGN ENGINEER: ABIGAIL WILGREEN, 847-705-4233  
 SCHAUMBURG, IL.