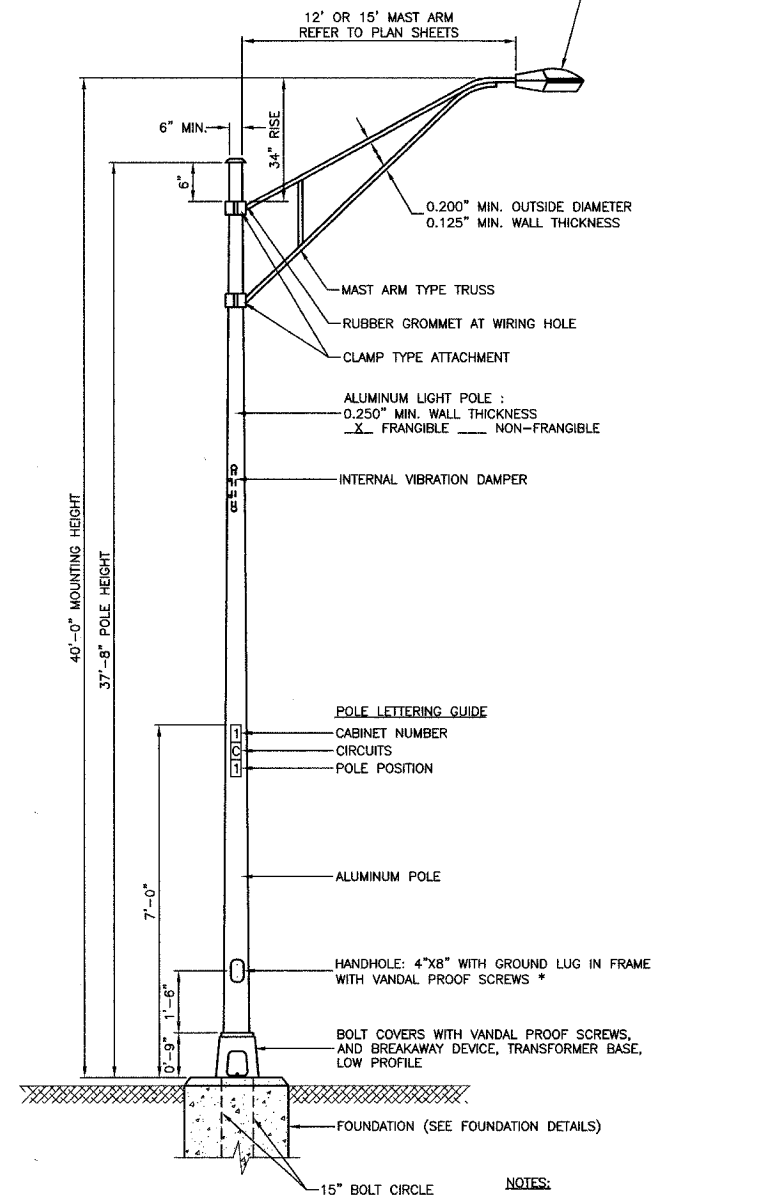


SECTION 18, TOWNSHIP 37, RANGE 13  
SECTION 19, TOWNSHIP 37, RANGE 13

F.A.S. NO.	SECTION	COUNTY	TOTAL SHEETS	SHEET NO.
2855	05-00052-00-LT	COOK	009	006
STA.	TO STA.			
FED. ROAD DIST. NO.	LINE	FED. AID PROJECT		

CONTRACT # 83963

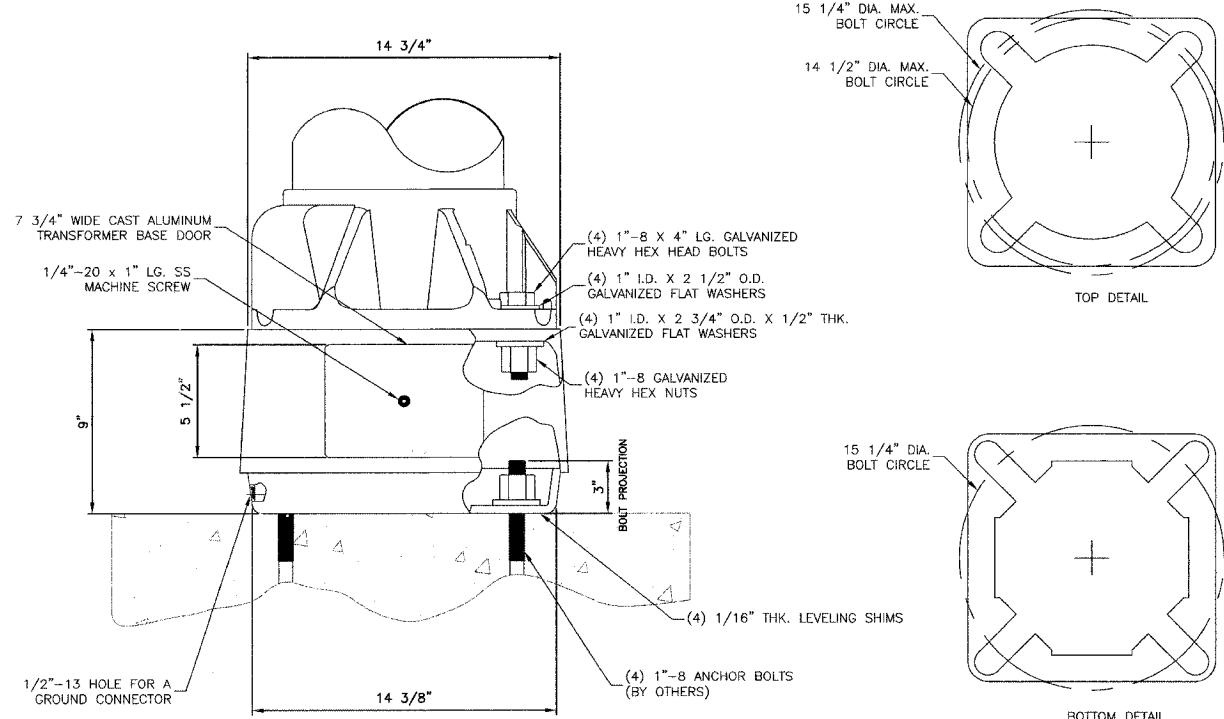
**LUMINAIRE:**  
250 WATT HIGH PRESSURE SODIUM LAMP  
240 VOLT BALLAST  
I.E.S. TYPE: MC III LIGHT DISTRIBUTION  
LENS TYPE: FLAT  
INITIAL LAMP LUMENS: 28,000  
LAMP LIFE: 24,000 HOURS



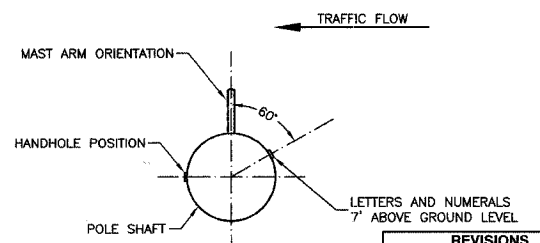
TYPICAL POLE INSTALLATION (40' MH)

- NOTES:**
1. THE LIGHTING UNITS SHALL MEET AASHTO DESIGN CRITERIA. DESIGN FOR 90 M.P.H. WIND WITH 30% GUST AND 75 POUND LUMINAIRE HAVING AN E.P.A. OF 1.6 SQ. FT. AND PROPER ICE LOADING.
  2. ALUMINUM ALLOY 6063-T6 SHALL BE USED.

**IMPORTANT NOTE:**  
TRANSFORMER BASE AND LIGHTPOLE TO BE LEVELED AS ONE UNIT, USING LEVELING SHIMS IF REQUIRED.



TRANSFORMER BASE DETAIL



POSITION OF HANDHOLE AND NUMERALS ON POLE

REVISIONS	
NAME	DATE

ILLINOIS DEPARTMENT OF TRANSPORTATION

**OAK PARK AVENUE STREET LIGHTING LIGHTING DETAILS**

SCALE: VERT. NA  
HORIZ. 1"=50'  
DATE: 4-6-07

DRAWN BY PS  
CHECKED BY TRL/DWS

ROBINSON ENGINEERING, LTD.  
17000 SOUTH PARK AVENUE, SOUTH HOLLAND, ILLINOIS 60470  
708-231-9100 FAX: 708-351-1628  
ILLINOIS DESIGN FIRM REGISTRATION NO. 184001128 05552-LIGHT-03 - P01