

SECTION 18, TOWNSHIP 37, RANGE 13
SECTION 19, TOWNSHIP 37, RANGE 13

STATE OF ILLINOIS
DEPARTMENT OF TRANSPORTATION
DIVISION OF HIGHWAYS
**PLANS FOR PROPOSED
FEDERAL AID HIGHWAY**

OAK PARK AVENUE (F.A.U. ROUTE 2955)
115TH STREET (F.A.U. ROUTE 1583) TO
107TH STREET (F.A.U. ROUTE 1679)
S.T.P. PROJECT NO.: M-8003(666)
SECTION NO.: 05-00052-00-LT
VILLAGE OF WORTH
COOK COUNTY
C-91-436-06

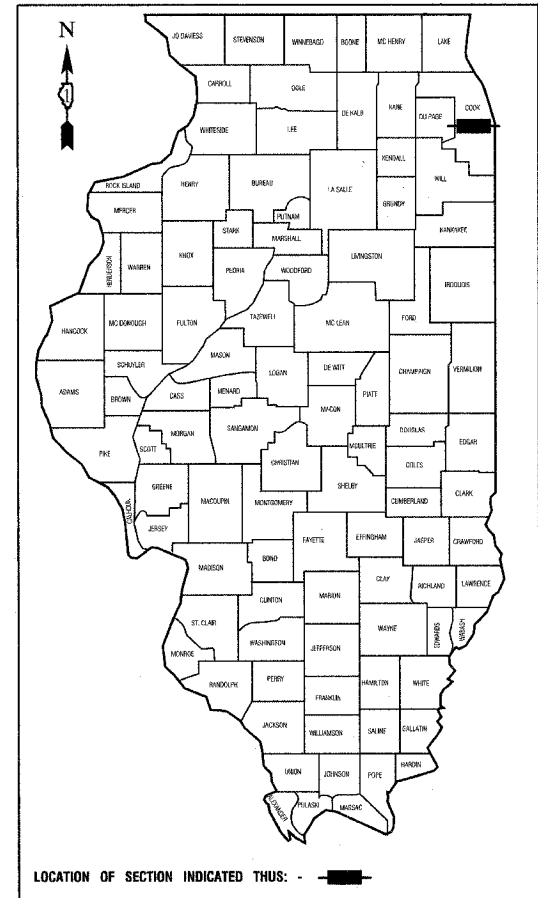
F. A. U. SEC.	SECTION	COUNTY	TOTAL SHEETS	SHEET NO.
2955	05-00052-00-LT	COOK	009	001
STA.	TO STA.			
FED. ROAD DIST. NO.	ILLINOIS	FED. AID PROJECT		
CONTRACT #				

INDEX OF SHEETS

1. COVER SHEET
2. SUMMARY OF QUANTITIES & GENERAL NOTES
- 3.-4. PLAN SHEETS
5. WIRING DIAGRAM
- 6.-9. LIGHTING DETAILS

STATE STANDARDS

- 000001-04 STANDARD SYMBOLS, ABBREVIATIONS AND PATTERNS
- 701501-03 URBAN LANE CLOSURE, 2L, 2W, UNDIVIDED
- 701606-04 URBAN LANE CLOSURE, MULTILANE, 2W, WITH MOUNTABLE MEDIAN
- 701701-04 URBAN LANE CLOSURE, MULTILANE INTERSECTION
- 701801-03 LANE CLOSURE, MULTILANE 1W OR 2W CROSSWALK OR SIDEWALK CLOSURE
- 702001-06 TRAFFIC CONTROL DEVICES



STATE OF ILLINOIS
DEPARTMENT OF TRANSPORTATION
DIVISION OF HIGHWAYS

APPROVED July 24th 2007
William J. Hammer
DIRECTOR OF PUBLIC WORKS, VILLAGE OF WORTH

PASSED July 24 2007
Christopher Holt
REGION ONE ENGINEER OF LOCAL ROADS & STREETS

RELEASED FOR
LIMITED REVIEW July 24 2007
Diane O'Keefe
DEPUTY DIRECTOR OF HIGHWAYS, REGION ONE ENGINEER

**PRINTED BY THE AUTHORITY OF
THE STATE OF ILLINOIS**

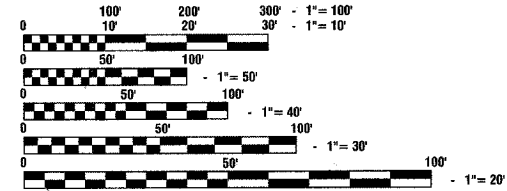
PREPARED BY OR UNDER THE
DIRECT SUPERVISION OF:

Thomas E. Lank
7/23/07



PROJECT LOCATION

GROSS LENGTH = 5257.5 FEET = 1.0 MILES
NET LENGTH = 5257.5 FEET = 1.0 MILES



FULL SIZE PLANS HAVE BEEN PREPARED USING STANDARD
ENGINEERING SCALES, REDUCED SIZED PLANS WILL NOT
CONFORM TO STANDARD SCALES, IN MAKING MEASUREMENTS
ON REDUCED PLANS, THE ABOVE SCALES MAY BE USED.

J. U. L. I. E.
JOINT UTILITY LOCATION INFORMATION FOR EXCAVATION
1 - 800 - 892 - 0123

CONTRACT NO. 83963

I.D.O.T. FEDERAL AID DESIGN ENGINEER: PHIL MARCYN 847-705-4189
CONSULTANTS: ROBINSON ENGINEERING, LTD. 708-331-6700

SECTION 18, TOWNSHIP 37, RANGE 13
SECTION 19, TOWNSHIP 37, RANGE 13

F. A. N. I. N.	SECTION	COUNTY	TOTAL SHEETS	SHEET NO.
2955	05-00052-00-LT	COOK	009	002
STA.	TO STA.			
FED. ROAD DIST. NO.	ILLINOIS	FED. AID PROJECT		

CONTRACT # 83963

S.I.		CODE NO.	PAY ITEM	UNIT	QUAN
		21101615	TOPSOIL FURNISH AND PLACE, 4"	SQ YD	1540
		21300010	EXPLORATION TRENCH, SPECIAL	FOOT	500
		25200110	SODDING, SALT TOLERANT (SPECIAL)	SQ YD	1540
		25200200	SUPPLEMENTAL WATERING	UNIT	100
		42400200	PORTLAND CEMENT CONCRETE SIDEWALK, 5 INCH	SQ FT	125
		44000600	SIDEWALK REMOVAL	SQ FT	125
		70102620	TRAFFIC CONTROL AND PROTECTION, STANDARD 701501	L SUM	1
		70102625	TRAFFIC CONTROL AND PROTECTION, STANDARD 701606	L SUM	1
		70102635	TRAFFIC CONTROL AND PROTECTION, STANDARD 701701	L SUM	1
		70102640	TRAFFIC CONTROL AND PROTECTION, STANDARD 701801	L SUM	1
		80400100	ELECTRIC SERVICE INSTALLATION	EACH	1
		80400200	ELECTRIC UTILITY SERVICE CONNECTION	L SUM	1
		81018600	CONDUIT PUSHED, 2 1/2" DIA., GALVANIZED STEEL	FOOT	765
		81900200	TRENCH AND BACKFILL FOR ELECTRICAL WORK	FOOT	4395
		XX006936	UNIT DUCT, WITH 3-1/C NO. 6 AND 1/C NO. 8 GROUND, 600V (XLP-TYPE USE), 1 1/4" DIA., POLYETHYLENE	FOOT	5160
		81702440	ELECTRIC CABLE IN CONDUIT, 600V (XLP-TYPE USE) 3-1/C NO. 1/0	FOOT	100
		82102250	LUMINAIRE, SODIUM VAPOR, HORIZONTAL MOUNT, 250 WATT	EACH	28
		82500520	LIGHTING CONTROLLER TYPE CB-RCS 60AMP - 480VOLT	EACH	1
		83008500	LIGHT POLE, ALUMINUM, 40 FT. M.H., 12 FT. MAST ARM	EACH	19
		83008600	LIGHT POLE, ALUMINUM, 40 FT. M.H., 15 FT. MAST ARM	EACH	5
		83600200	LIGHT POLE FOUNDATION, 24" DIAMETER	FOOT	175
		83600215	LIGHT POLE FOUNDATION, 24" DIAMETER, OFFSET	FOOT	8
		83800205	BREAKAWAY DEVICE, TRANSFORMER BASE, 15 INCH BOLT CIRCLE	EACH	24
		84200500	REMOVAL OF EXISTING LIGHTING UNIT, SALVAGE (SPECIAL)	EACH	4
		67100100	MOBILIZATION	L SUM	1

* - INDICATES SPECIALTY ITEMS

GENERAL NOTES

1. ALL WORK TO CONFORM TO THE NATIONAL ELECTRICAL CODE AND ANY APPLICABLE LOCAL CODES.
2. CONTRACTOR TO VERIFY LOCATION OF ALL UNDERGROUND UTILITIES BEFORE TRENCHING OR AUGERING.
3. BEFORE INSTALLING STANDARDS NEAR OVERHEAD FACILITIES CALL C.E. Co. FOR APPROVAL OF LOCATION.
4. FOR LOCATION OF EXISTING UNDERGROUND ELECTRICAL CABLE CALL C.E. Co.
5. SIZE ALL CONDUIT AS SPECIFIED ON DRAWINGS.
6. CONTRACTOR SHALL TAKE ALL NECESSARY MEASURES TO RESTORE ANY SPECIALIZED LANDSCAPING, (I.E. DECORATIVE ROCKS, SHRUBS, PLANTS, ECT.) OR SHALL REPLACE IT, THE COST OF WHICH SHALL BE CONSIDERED INCIDENTAL TO THE CONTRACT.

REVISIONS	
NAME	DATE

ILLINOIS DEPARTMENT OF TRANSPORTATION

**OAK PARK AVENUE
STREET LIGHTING
SUMMARY OF QUANTITIES & GENERAL NOTES**

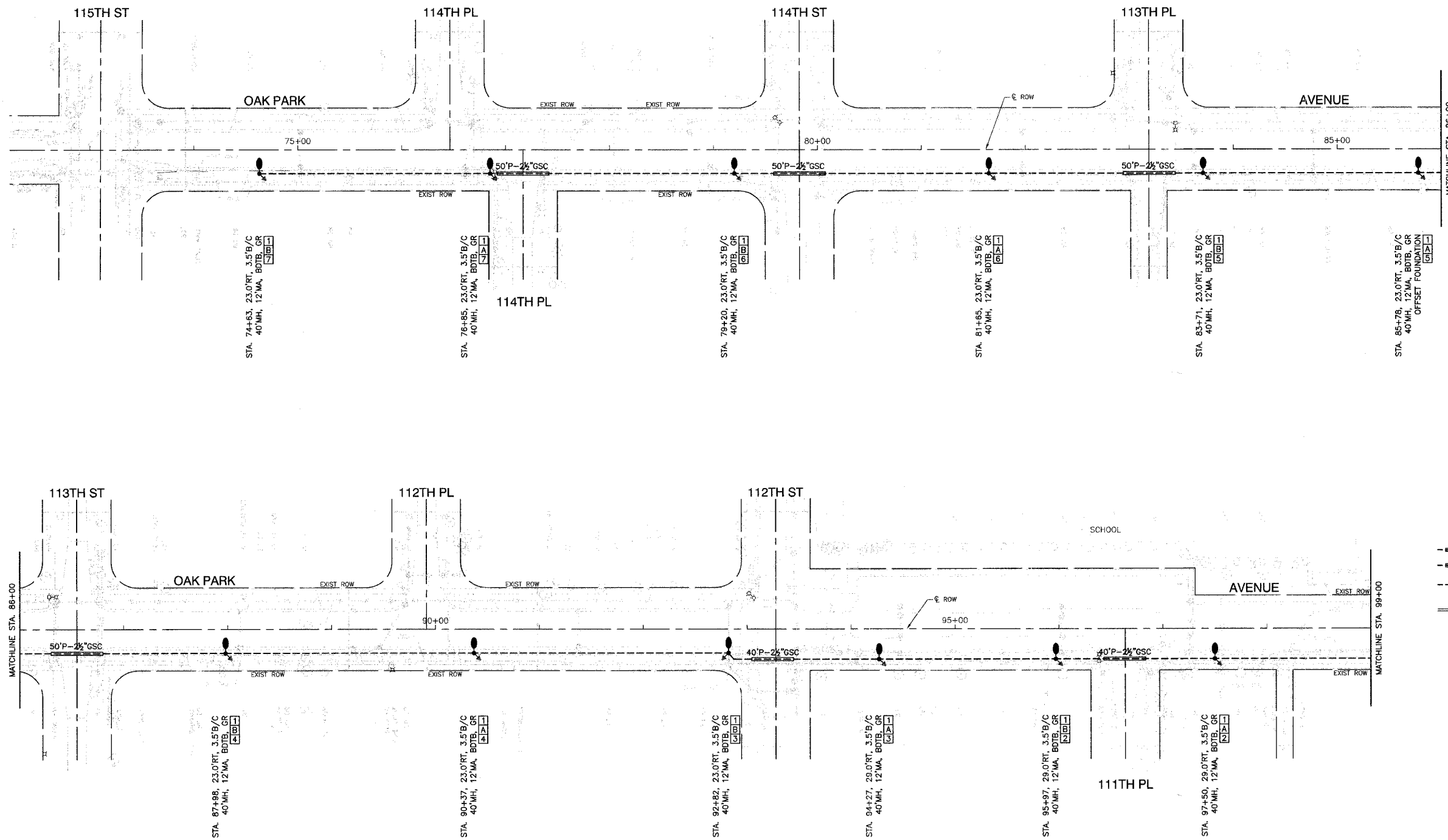
SCALE: VERT. NA
 HORIZ. NA
DATE: 4-6-07

DRAWN BY PS
CHECKED BY TRL/DWS

SECTION 19, TOWNSHIP 37, RANGE 13

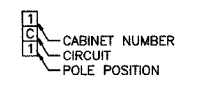
F. A. I. I. NO.	SECTION	COUNTY	TOTAL SHEETS	SHEET NO.
2855	05-00052-00-LT	COOK	008	003
STA.	TO STA.			
FED. ROAD DIST. NO.	ALINKS	FED. AID PROJECT		

CONTRACT # 83963



- LEGEND:**
- EXISTING STREET LIGHT
 - PROPOSED STREET LIGHT-250W HPS
 - PROPOSED CONTROLLER
 - CONDUIT, PUSHED, GALVANIZED STEEL
 - CONDUIT, TRENCHED, GALVANIZED STEEL
 - UNIT DUCT, 3-1/2\" C, NO.6 AWG AND NO.8 GROUND, 600V IN 1-1/4\" DUCT
 - SERVICE WIRE, 3-1/2\" C, NO. 1/0 AWG. (SEE LIGHTING CONTROLLER PLAN)
 - GROUND ROD, 5/8\" DIA. x 10'
 - REMOVAL OF EXISTING STREET LIGHT BY OTHERS
 - LT LEFT
 - RT RIGHT
 - MH MOUNTING HEIGHT
 - MA MAST ARM
 - B/C BACK OF CURB
 - BDTB BREAKAWAY DEVICE, TRANSFORMER BASE, 15\" BOLT CIRCLE
 - R&R REMOVE AND REPLACE EXISTING STREET LIGHT

POLE IDENTIFICATION



REVISIONS	
NAME	DATE

ILLINOIS DEPARTMENT OF TRANSPORTATION

OAK PARK AVENUE STREET LIGHTING PLAN SHEETS

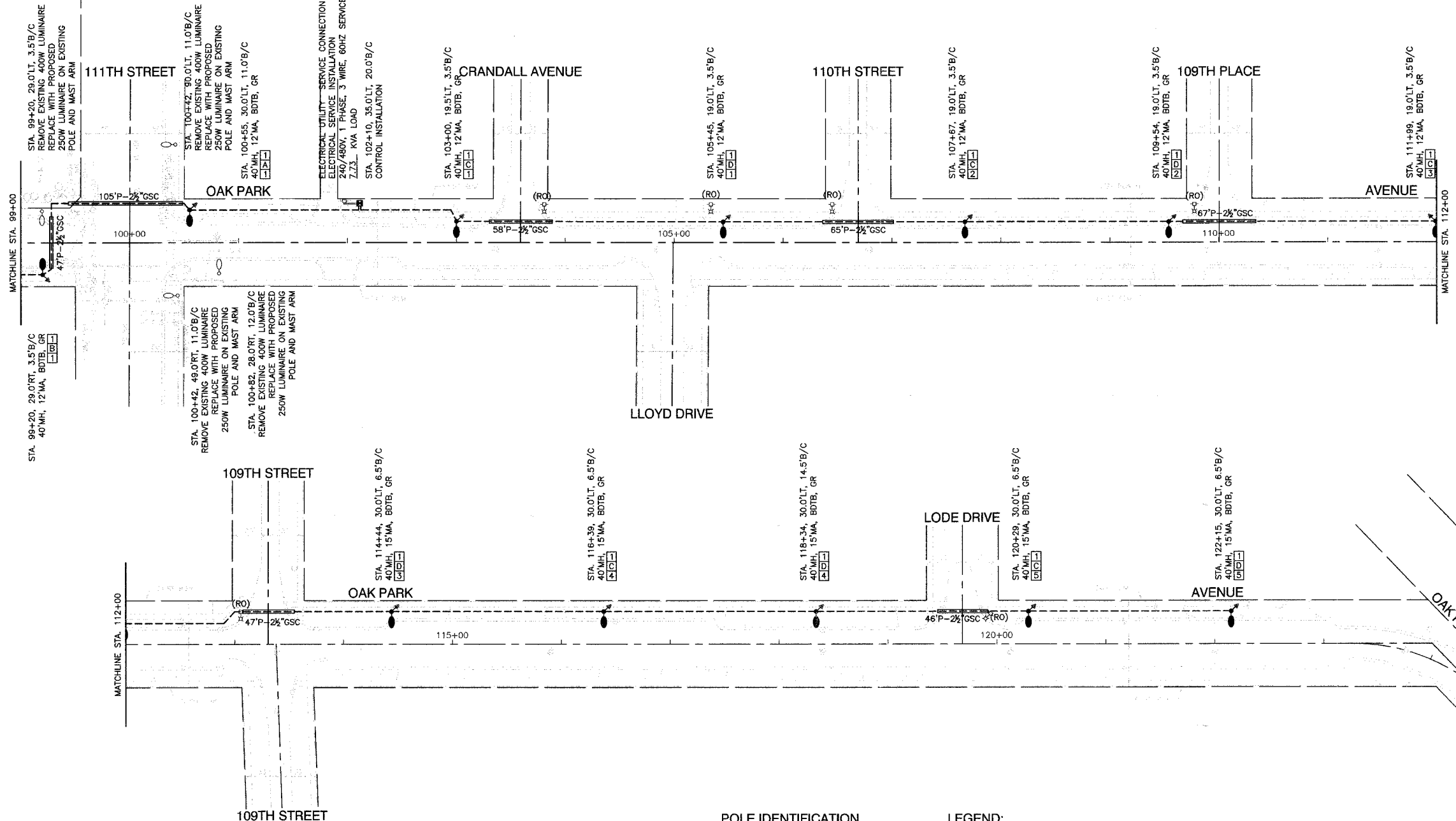
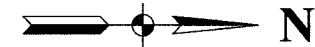
SCALE: VERT. NA
 HORIZ. 1"=50'
 DATE 4-6-07

DRAWN BY PS
 CHECKED BY TRJ/DWS

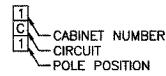
SECTION 18, TOWNSHIP 37, RANGE 13

F. A. U. NO.	SECTION	COUNTY	TOTAL SHEETS	SHEET NO.
2855	05-00052-00-LT	COOK	009	004
STA.	TO STA.			
FED. ROAD DIST. NO.	ILLINOIS	FED. AID PROJECT		

CONTRACT # 83963



POLE IDENTIFICATION



LEGEND:

- EXISTING STREET LIGHT
- PROPOSED STREET LIGHT-250W HPS
- PROPOSED CONTROLLER
- P- CONDUIT, PUSHED, GALVANIZED STEEL
- T- CONDUIT, TRENCHED, GALVANIZED STEEL
- - - UNIT DUCT, 3-1/C, NO.6 AWG AND NO.8 GROUND, 600V IN 1-1/4" DUCT
- SERVICE WIRE, 3-1/C, NO. 1/0 AWG. (SEE LIGHTING CONTROLLER PLAN)
- GR GROUND ROD, 5/8" DIA. x 10'
- (RO) REMOVAL OF EXISTING STREET LIGHT BY OTHERS
- LT LEFT
- RT RIGHT
- MH MOUNTING HEIGHT
- MA MAST ARM
- B/C BACK OF CURB
- BDTB BREAKAWAY DEVICE, TRANSFORMER BASE, 15" BOLT CIRCLE
- R&R REMOVE AND REPLACE EXISTING STREET LIGHT

REVISIONS	
NAME	DATE

ILLINOIS DEPARTMENT OF TRANSPORTATION

OAK PARK AVENUE STREET LIGHTING PLAN SHEETS

SCALE: VERT. NA
 HORIZ. 1"=50'
 DATE 4-6-07

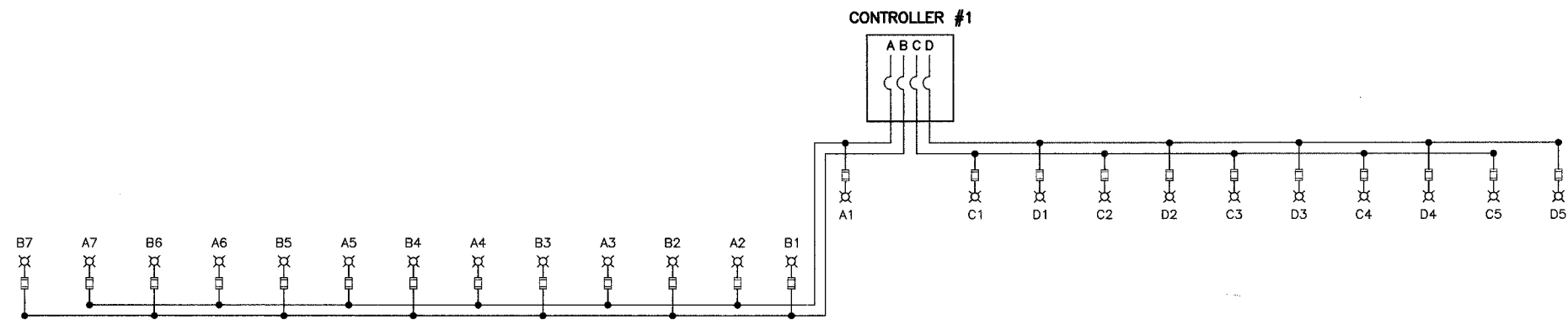
DRAWN BY PS
 CHECKED BY TRL/DWS

ROBINSON ENGINEERING, LTD.
 1700 SOUTH PARK AVENUE, SOUTH HOLLAND, ILLINOIS 60473
 (708) 921-6100 FAX (708) 311-5608
 ILLINOIS DESIGN FIRM REGISTRATION NO. 1-94207-123

SECTION 18, TOWNSHIP 37, RANGE 13
SECTION 19, TOWNSHIP 37, RANGE 13

F. A. U. NO.	SECTION	COUNTY	TOTAL SHEETS	SHEET NO.
2855	05-00052-00-LT	COOK	009	005
STA.		TO STA.		
FED. ROAD DIST. NO.	MILEAGE	FED. AID PROJECT		

CONTRACT # 83963



CIRCUIT	WATTS	AMPS
A	1750	9.1
B	1750	9.1
C	1250	6.5
D	1250	6.5
TOTAL LOAD	6000	31.2

LEGEND

- ⊗ LUMINAIRE, 250W HPS, STREET LIGHT
- FUSE, 3.5 AMP
- A1 LUMINAIRE CIRCUIT
- ⌋ CIRCUIT BREAKER
- CONNECTION

NAME	DATE

ILLINOIS DEPARTMENT OF TRANSPORTATION

**OAK PARK AVENUE
STREET LIGHTING
WIRING DIAGRAM**

SCALE: VERT. NA
HORIZ. NA
DATE 4-6-07

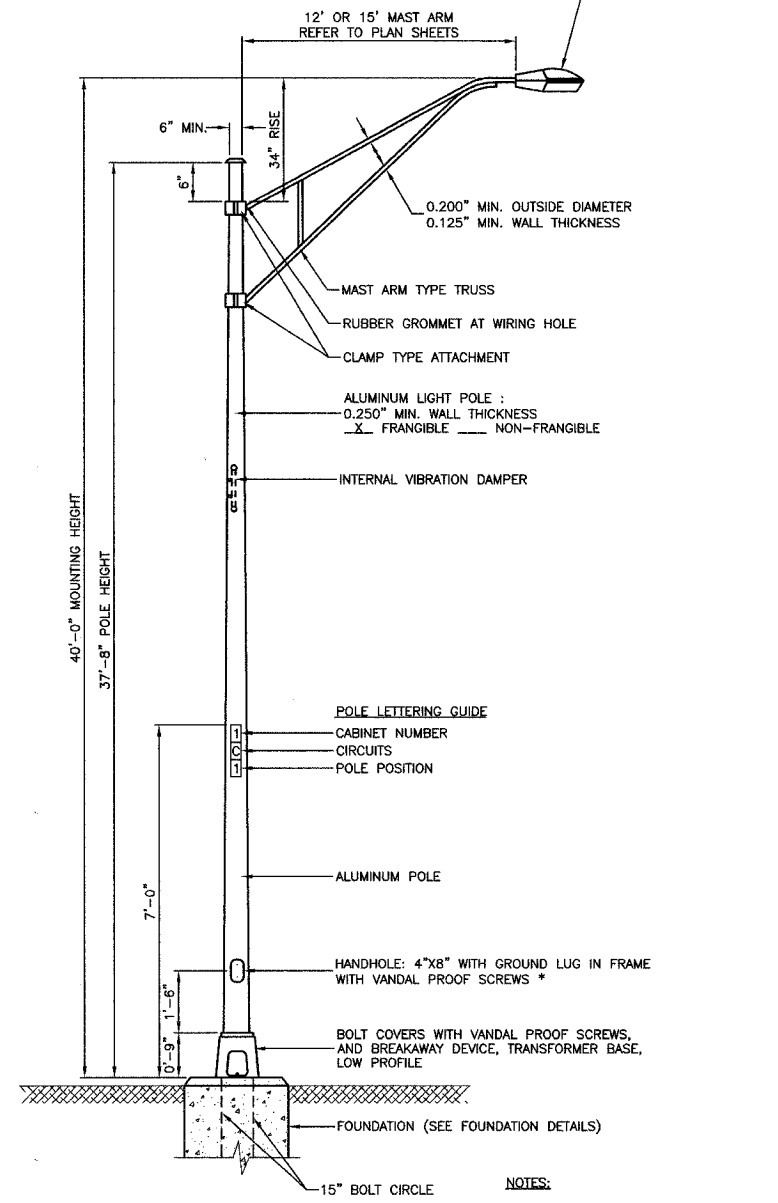
DRAWN BY PS
CHECKED BY TRL/DWS

SECTION 18, TOWNSHIP 37, RANGE 13
SECTION 19, TOWNSHIP 37, RANGE 13

F.A.S. NO.	SECTION	COUNTY	TOTAL SHEETS	SHEET NO.
2855	05-00052-00-LT	COOK	009	006
STA.	TO STA.			
FED. ROAD DIST. NO.	LINE	FED. AID PROJECT		

CONTRACT # 83963

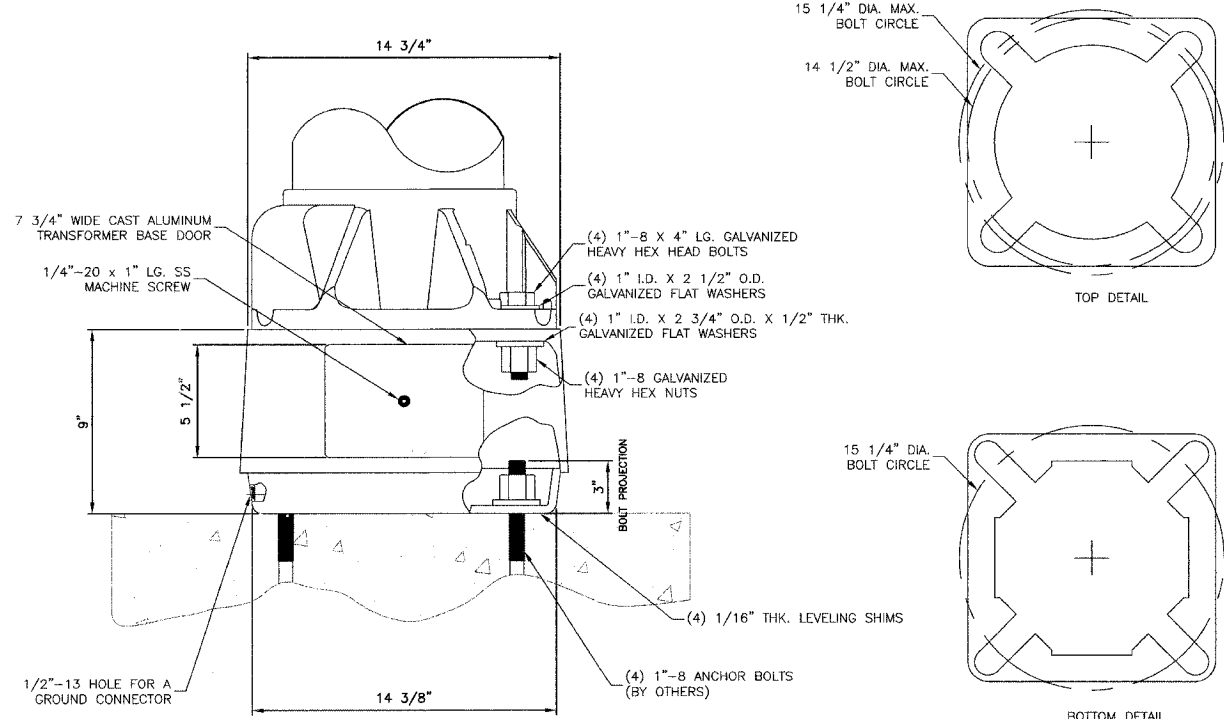
LUMINAIRE:
250 WATT HIGH PRESSURE SODIUM LAMP
240 VOLT BALLAST
I.E.S. TYPE: MC III LIGHT DISTRIBUTION
LENS TYPE: FLAT
INITIAL LAMP LUMENS: 28,000
LAMP LIFE: 24,000 HOURS



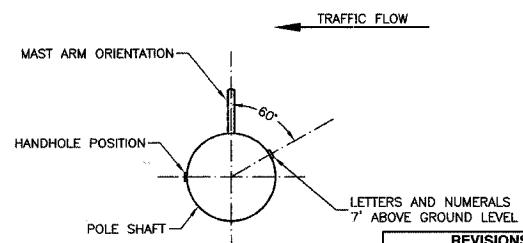
TYPICAL POLE INSTALLATION (40' MH)

- NOTES:**
1. THE LIGHTING UNITS SHALL MEET AASHTO DESIGN CRITERIA. DESIGN FOR 90 M.P.H. WIND WITH 30% GUST AND 75 POUND LUMINAIRE HAVING AN E.P.A. OF 1.6 SQ. FT. AND PROPER ICE LOADING.
 2. ALUMINUM ALLOY 6063-T6 SHALL BE USED.

IMPORTANT NOTE:
TRANSFORMER BASE AND LIGHTPOLE TO BE LEVELED AS ONE UNIT, USING LEVELING SHIMS IF REQUIRED.



TRANSFORMER BASE DETAIL



POSITION OF HANDHOLE AND NUMERALS ON POLE

REVISIONS	
NAME	DATE

ILLINOIS DEPARTMENT OF TRANSPORTATION

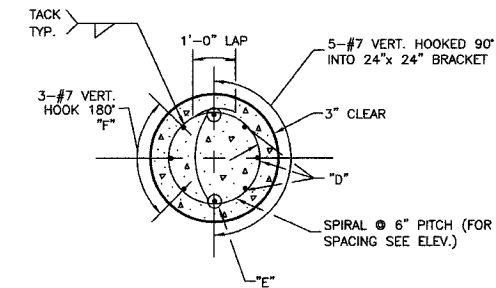
OAK PARK AVENUE STREET LIGHTING LIGHTING DETAILS

SCALE: VERT. NA
HORIZ. 1"=50'
DATE: 4-6-07

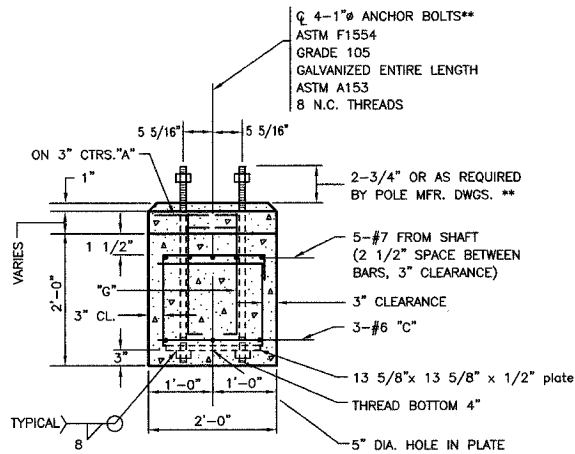
DRAWN BY PS
CHECKED BY TRL/DWS

ROBINSON ENGINEERING, LTD.
17000 SOUTH PARK AVENUE, SOUTH HOLLAND, ILLINOIS 60473
708-231-9100 FAX: 708-351-1628
ILLINOIS DESIGN FIRM REGISTRATION NO. 184001128

SECTION 18, TOWNSHIP 37, RANGE 13
SECTION 19, TOWNSHIP 37, RANGE 13



SECTION A-A

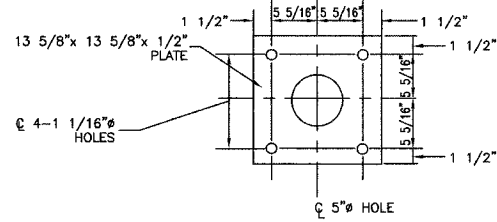


SECTION B-B

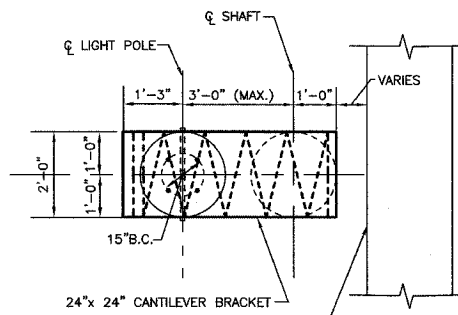
****NOTE:**
THE TOP OF THE ANCHOR BOLTS SHOULD NOT PROJECT MORE THAN 4" ABOVE A 60" CHORD ALIGNED RADIALLY TO THE CENTERLINE OF THE HIGHWAY AND CONNECTING ANY POINT WITHIN THE LENGTH OF THE CHORD, ON THE GROUND SURFACE ON ONE SIDE OF THE SUPPORT TO A POINT ON THE GROUND SURFACE ON THE OTHER SIDE.

- NOTE:**
1. CONCRETE SHALL BE 3500 PSI AT 14 DAYS. (CLASS S)
 2. REINFORCING BARS SHALL BE OF NEW BILLET STEEL ASTM A615 (M42) AND DEFORMED.
 3. HOLE FOR THE FOUNDATION (SHAFT) SHALL BE AUGERED.
 4. POLE FOUNDATION, OFFSET FOR THIS APPLICATION IS EQUIVALENT TO 13.5 LIN.FT. PER FOUNDATION.
 5. THE CONTRACTOR SHALL USE A #3 SPIRAL AT 6" PITCH OR MAY SUBSTITUTE #3 TIES 12" O.C. WITH THE APPROVAL OF THE ENGINEER.

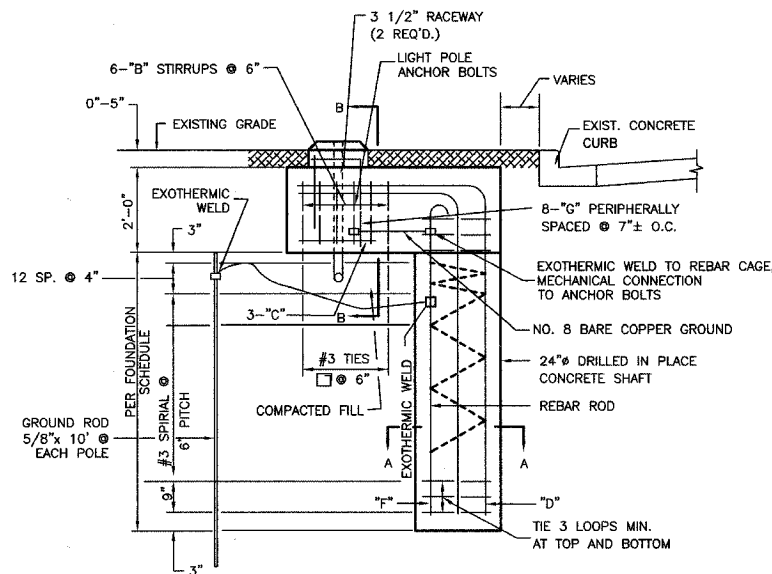
BILL OF MATERIALS				
"LIGHT POLE FOUNDATION, 24" DIAMETER, OFFSET"				
QUAN.	MARK	SIZE	LENGTH	SHAPE
11	A	NO.3	5'-9"	○
6	B	NO.3	6'-8"	□
3	C	NO.6	5'-31/2'	—
8	G	NO.6	2'-1"	—
3	D	NO.7	13'-6"	—
2	E	NO.7	12'-0"	—
3	F	NO.7	9'-11"	—
REINFORCING BARS		LBS.	285	
CLASS X CONCRETE		CU.YDS.	1.7	
ANCHOR BOLTS		NO.	4	
ANCHOR BOLT PLATE NO.			1	



ANCHOR BOLT PLATE

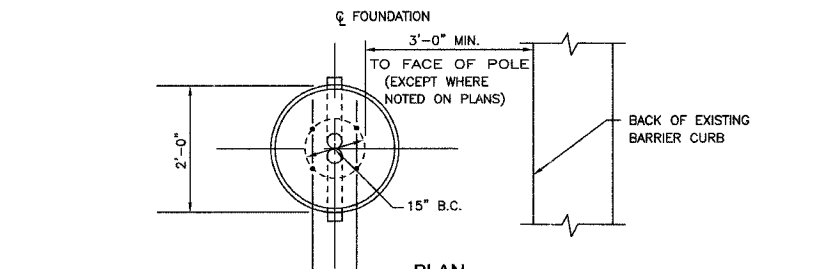
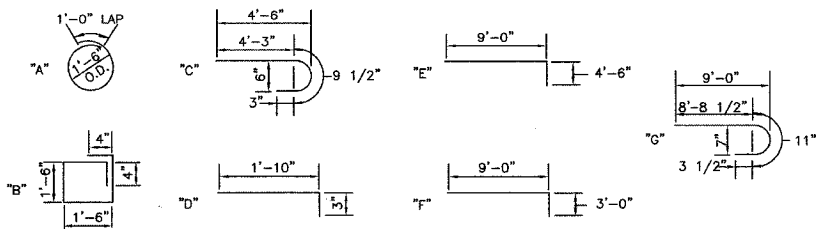


PLAN - CANTILEVERED BRACKET

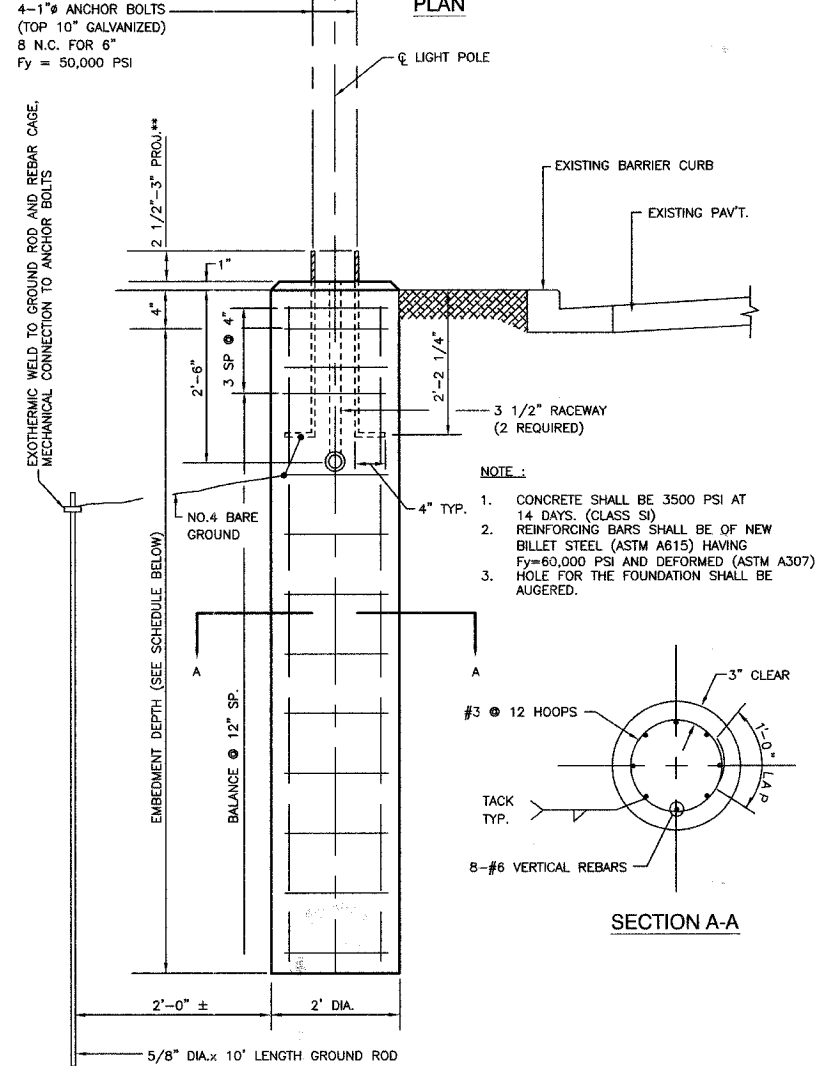


ELEVATION

POLE FOUNDATION, OFFSET - DETAILS



PLAN

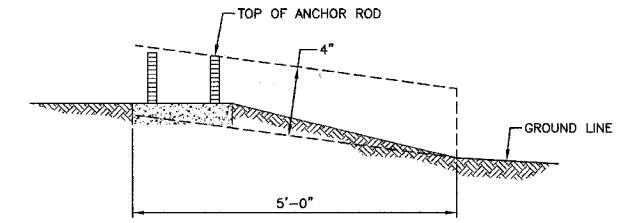


ELEVATION

LIGHT POLE FOUNDATION (TYPICAL)

****NOTE:**
ACTUAL FOUNDATION DEPTH IS EMBEDMENT DEPTH (FROM SCHEDULE) PLUS 6" EQUALS TOTAL DEPTH.
7'-6"+6"= 8'-0" FOR 40' MH
10'-0"+6"=10'-6" FOR 47.5' MH

TYPE OF SOILS		EMBEDMENT MOUNTING HEIGHT			
DESCRIPTION	STANDARDS	30 FT.	35 FT.	40 FT.	47.5 FT.
SOFT CLAY	Qu= .25-50 T/FT. 2	9'-0"	9'-8"	10'-6"	14'-0"
MEDIUM CLAY	Qu= .50-1.0 T/FT. 2	6'-6"	7'-0"	7'-6"	10'-0"
DENSE CLAY	Qu= 1.0-2.0 T/FT. 2	5'-6"	6'-0"	6'-6"	8'-6"
LOOSE SAND	N= 4-10	7'-0"	7'-8"	8'-4"	11'-0"
MEDIUM SAND	N= 10-30	6'-0"	6'-6"	7'-3"	9'-6"
DENSE SAND	N= 30-50	5'-6"	6'-0"	6'-6"	8'-6"



****NOTE:**
THE FOUNDATION SHALL NOT PROTRUDE MORE THAN 100MM (4") ABOVE THE FINISHED GRADE WITHIN A 1.5M (60") CHORD ACROSS THE FOUNDATION, WITH ANCHOR RODS INCLUDED. IN ACCORDANCE WITH AASHTO GUIDELINES. IF THE FOUNDATION HEIGHT, INCLUDING ANCHOR RODS, EXTENDS BEYOND THESE SPECIFIED LIMITS, THE FOUNDATION SHALL BE REPLACED AT THE CONTRACTORS EXPENSE. SEE FOUNDATION EXTENSION DETAIL.

FOUNDATION EXTENSION DETAIL

F.A.U. NO.	SECTION	COUNTY	TOTAL SHEETS	SHEET NO.
2955	05-00052-00-LT	COOK	009	007
STA.	TO STA.			
FED. ROAD DIST. NO.	ILLINOIS	FED. AID PROJECT		

CONTRACT # 83963

REVISIONS	
NAME	DATE

ILLINOIS DEPARTMENT OF TRANSPORTATION

OAK PARK AVENUE STREET LIGHTING LIGHTING DETAILS

SCALE: VERT. NA
HORIZ. 1"=50'

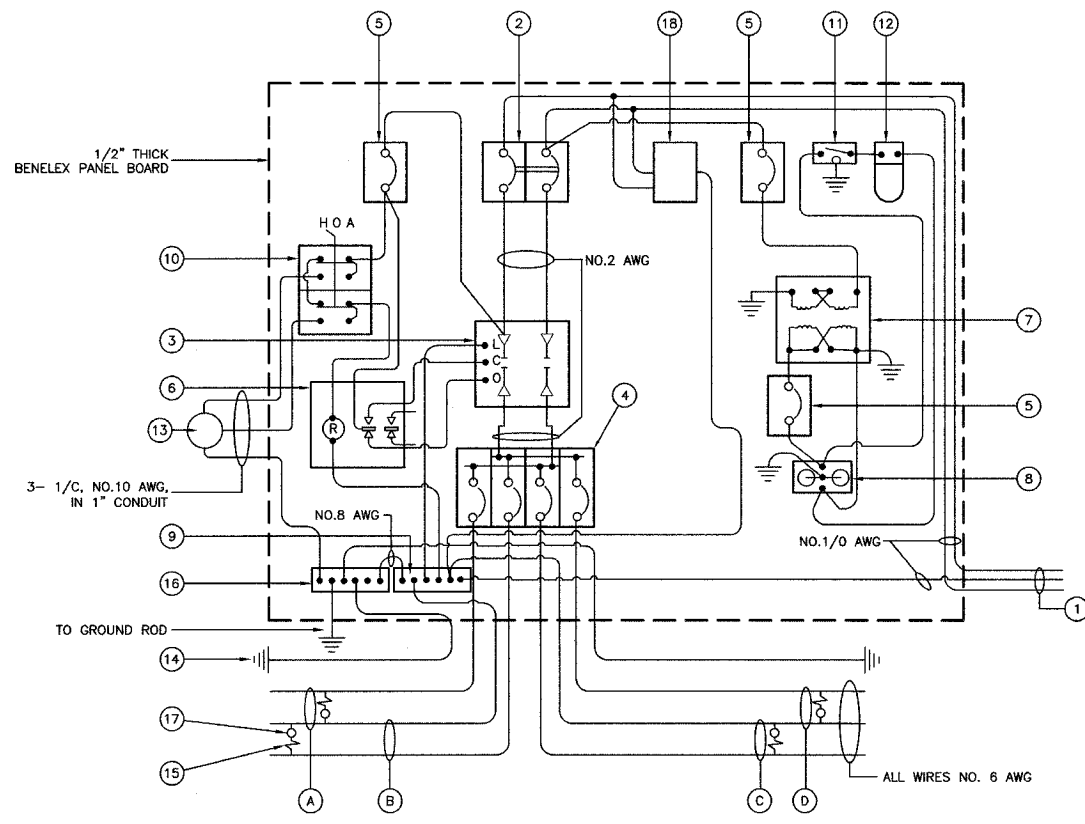
DATE: 4-6-07

DRAWN BY: PS
CHECKED BY: TRL/DWS

ROBINSON ENGINEERING, LTD.
17000 SOUTH PARK AVENUE, SOUTH HOLLAND, ILLINOIS 60473
(708) 324-4700 FAX (708) 321-0225
ILLINOIS DESIGN FIRM REGISTRATION NO. 184001126

F. A. S. NO.	SECTION	COUNTY	TOT. SHEETS	SHEET NO.
2855	05-00052-00-LT	COOK	009	008
STA.	TO STA.			
FED. ROAD DIST. NO.	ILLINOIS	FED. AID PROJECT		

CONTRACT # 83963



CONTROLLER WIRING DIAGRAM

CONTROLLER WIRING DIAGRAM LEGEND

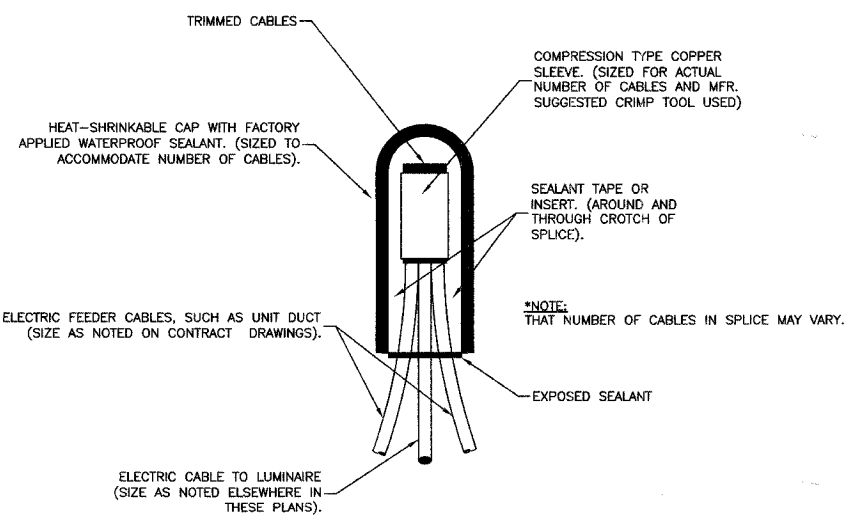
- ① 3-1/C, NO. 1/0, 600V SERVICE WIRE IN 2" DIA. GALVANIZED STEEL CONDUIT FOR 240/480 VOLT, 1Ø, 3 WIRE, 60HZ. SERVICE.
- ② (1) 60 AMP MAIN CIRCUIT BREAKER, 2 POLE, 600 VOLT, 100 AMP BASE, NON-INTERCHANGEABLE TRIP INTERRUPTING RATING NEMA - 14000 AMP AT 480 V.
- ③ (1) 60 AMP REMOTE CONTROL CONTACTOR SWITCH, ELECTRICALLY OPERATED, MECHANICALLY HELD, 2 POLE, SINGLE THROW, MINIMUM 60 AMP, 600 VOLT
- ④ (4) 30 AMP CIRCUIT BREAKER, 1 POLE, 240 VOLT, 100 AMP BASE, NON-INTERCHANGEABLE TRIP RATING NEMA - 14000 AMP AT 240 VOLTS.
- ⑤ (3) 20 AMP CONTROL CIRCUIT-CIRCUIT BREAKER, 1 POLE, 240 VOLT, 100 AMP BASE, NON-INTERCHANGEABLE TRIP INTERRUPTING RATING NEMA 14000 AMP AT 240 V.
- ⑥ (1) 20 AMP, 1 POLE DOUBLE THROW, 240 VOLT RELAY
- ⑦ (1) 1.5 KVA, SINGLE PHASE, ENCAPSULATED TRANSFORMER 240x480/120x240 VOLT, 60 HZ.
- ⑧ (1) 20 AMP, 120 VOLT DUPLEX GFCI RECEPTACLE.
- ⑨ NEUTRAL BUS BAR, 1/4"x1"x12" LONG MOUNTED ON PANEL WITH TAPS.
- ⑩ 3 POSITION SELECTOR SWITCH
- ⑪ SWITCH FOR LIGHTING FIXTURE MOUNTED IN BOX.
- ⑫ WEATHER-PROOF INCANDESCENT LIGHTING FIXTURE WITH 60 WATT, 120 V LAMP.
- ⑬ PHOTOCCELL MOUNTED TO BOTTOM OF VENTED CONTROL CABINET OVERHANG
- ⑭ NO.8 AWG INSULATED GROUND WIRE
- ⑮ IN-LINE FUSEHOLDER WITH FUSE AS NOTED IN FUSE TABLE
- ⑯ GROUND BUS BAR 1/4"x1"x12" LONG MOUNTED ON PANEL WITH TAPS.
- ⑰ LUMINAIRE, 250 HPS
- ⑱ SURGE SUPPRESSOR
- A PROPOSED CIRCUIT
- B PROPOSED CIRCUIT
- C PROPOSED CIRCUIT
- D PROPOSED CIRCUIT
- E PROPOSED CIRCUIT

GENERAL NOTES FOR CONTROL CABINET

1. ENTIRE CONTROL CABINET SHALL BE GROUNDED.
2. ALL WIRING SHALL BE TAGGED WITH SELF-STICKING WIRE MARKERS.
3. GROUND BUS TO BE COLOR CODED GREEN, NEUTRAL BUS WHITE, AND BONDED TO CABINET. ENCLOSURE, BY LISTED PRESSURE CONNECTORS OR LISTED CLAMPS.
4. ALL INTERNAL CONTROLLER WIRING TO BE NO.12 AWG UNLESS OTHERWISE SPECIFIED.
5. CABINET WIRING INSULATION TO BE TYPE XHHW OR APPROVED EQUAL.

LIGHTING GENERAL NOTES

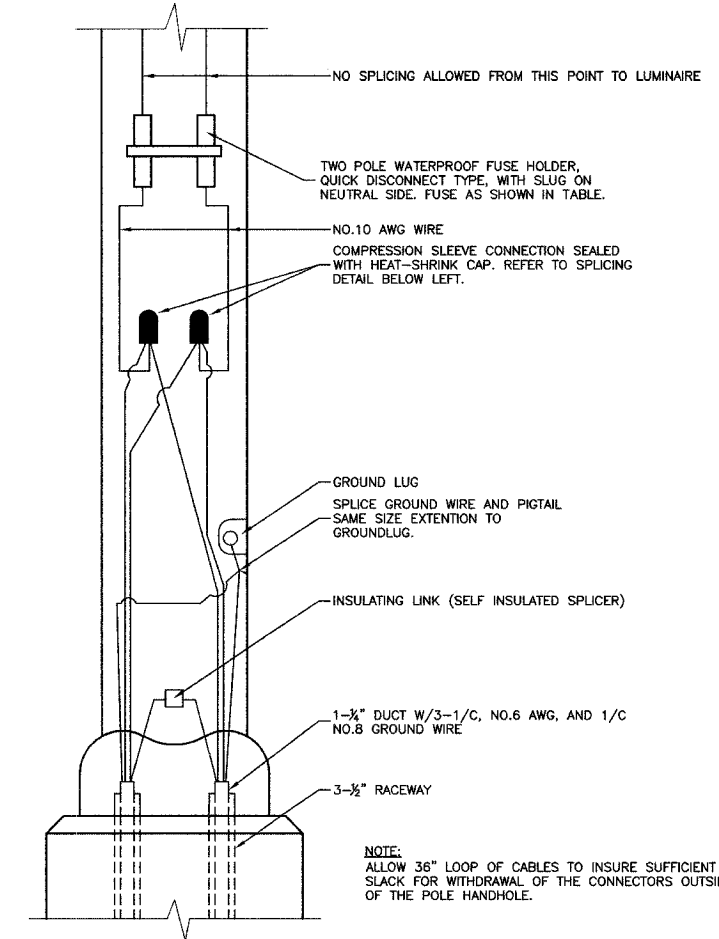
1. ALL WORK TO CONFORM TO THE NATIONAL ELECTRICAL CODE AND ANY APPLICABLE LOCAL CODES.
2. CONTRACTOR TO VERIFY LOCATION OF ALL UNDERGROUND UTILITIES BEFORE TRENCHING OR AUGERING.
3. BEFORE INSTALLING STANDARDS NEAR OVERHEAD FACILITIES CALL C.E. Co. FOR APPROVAL OF LOCATION.
4. FOR LOCATION OF EXISTING UNDERGROUND ELECTRICAL CABLE CALL C.E. Co.
5. SIZE ALL CONDUIT AS SPECIFIED ON DRAWINGS.
6. CONTRACTOR SHALL TAKE ALL NECESSARY MEASURES TO RESTORE ANY SPECIALIZED LANDSCAPING, (i.e. DECORATIVE ROCKS, SHRUBS, PLANTS, ECT.) OR SHALL REPLACE IT, THE COST OF WHICH SHALL BE CONSIDERED INCIDENTAL TO THE CONTRACT.



SPlicing ELECTRIC CABLES
BASIC MATERIALS AND METHODS

NOMINAL WATTAGE	FUSE SIZE
250	3.5 AMP
310	5.0 AMP

LUMINAIRE FUSE SIZE TABLE



POLE HANDHOLE WIRING DIAGRAM
(TYPICAL FOR SINGLE LUMINAIRE INSTALLATION)

REVISIONS	
NAME	DATE

ILLINOIS DEPARTMENT OF TRANSPORTATION

OAK PARK AVENUE
STREET LIGHTING
LIGHTING DETAILS

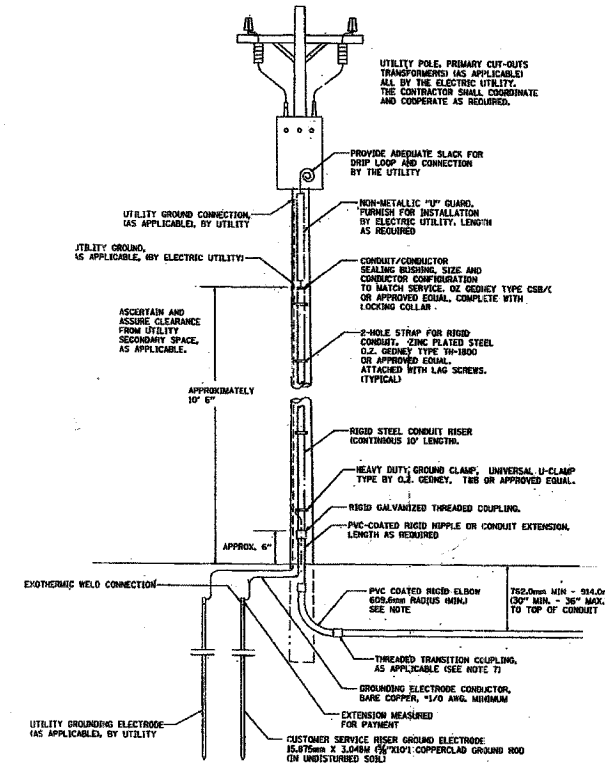
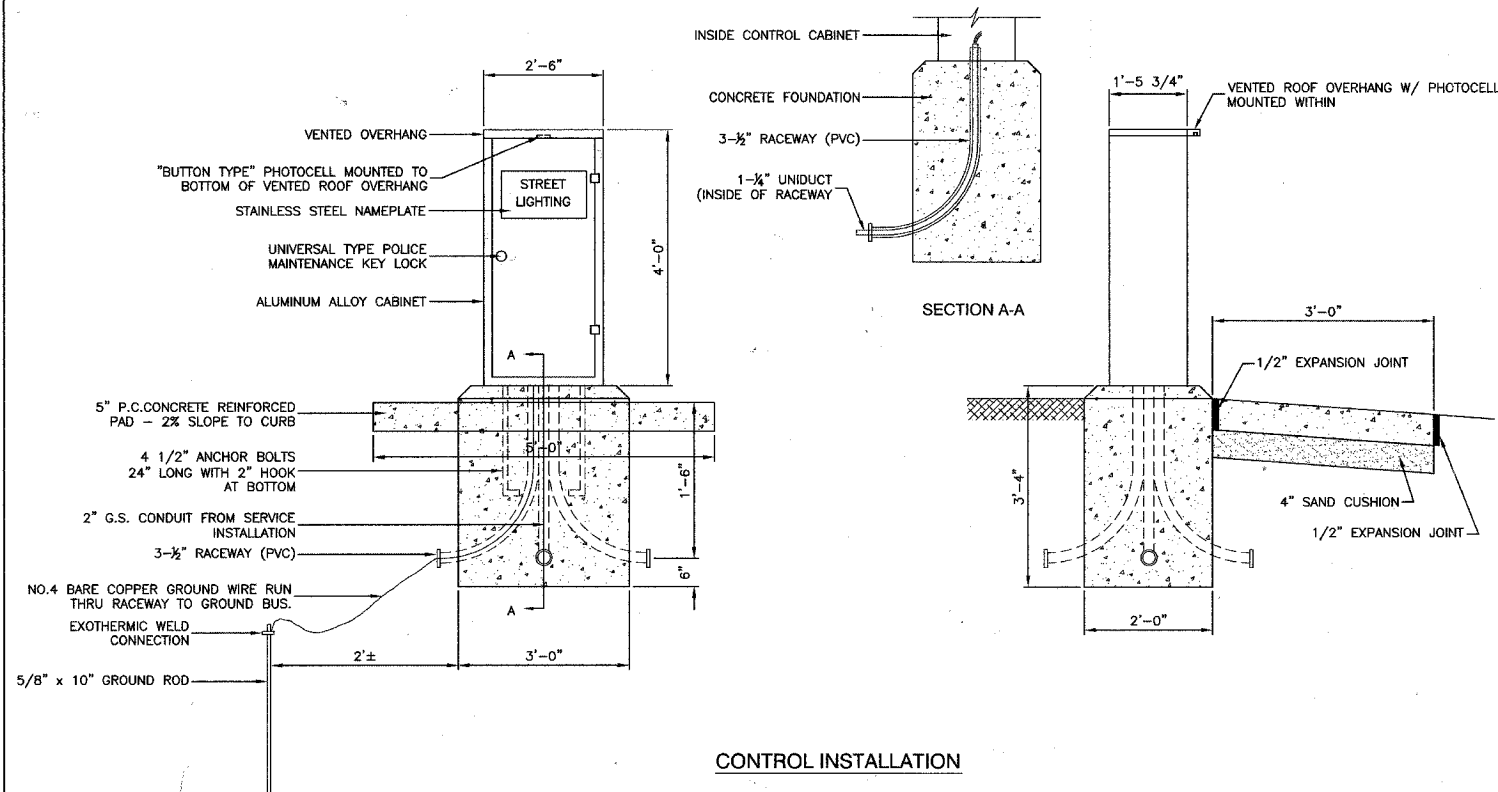
SCALE: VERT. NA
HORIZ. 1"=50'
DATE: 4-6-07

DRAWN BY PS
CHECKED BY TR/DWS

ROBINSON ENGINEERING, LTD.
17000 SOUTH PARK AVENUE, SOUTH HOLLAND, ILLINOIS 60470
TEL: (708) 231-8180 FAX: (708) 311-3828
ILLINOIS DESIGN FIRM REGISTRATION NO. 134001102 05562-LIGHT-03 - P03

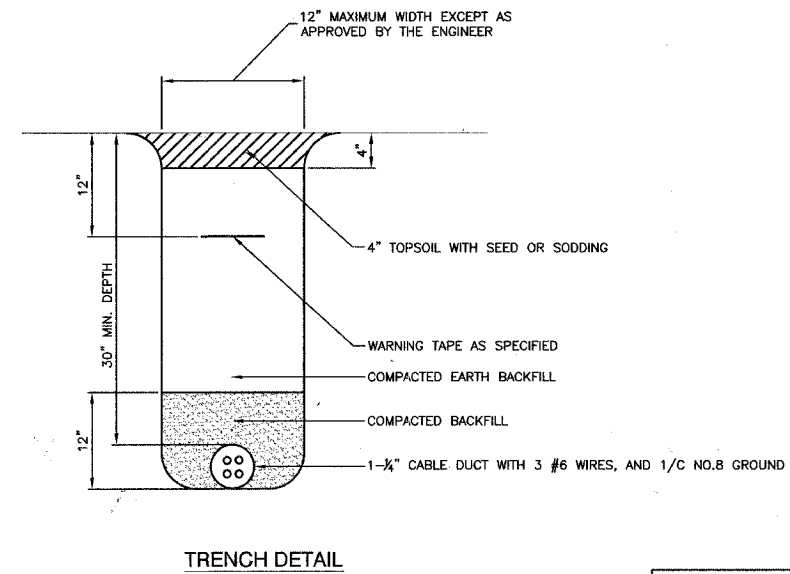
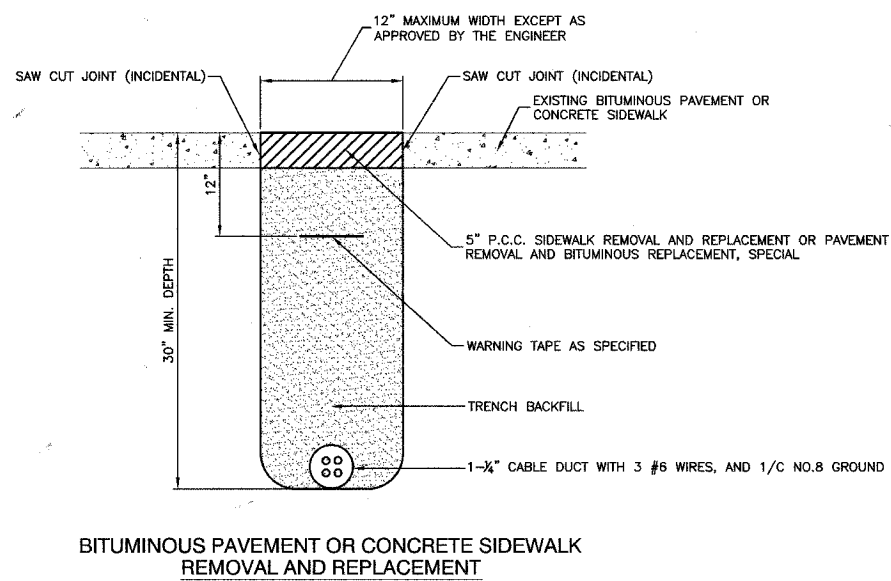
SECTION 18, TOWNSHIP 37, RANGE 13
SECTION 19, TOWNSHIP 37, RANGE 13

F.A.U. NO.	SECTION	COUNTY	TOTAL SHEETS	SHEET NO.
2955	05-00052-00-LT	COOK	009	009
STA.	TO STA.			
FED. ROAD DIST. NO.	LANES	FED. AID PROJECT		
CONTRACT # 83963				



240/480 VOLT, 1Ø, 3 WIRE, 60HZ SERVICE
7.73 KVA LOAD, CONTROLLER #1

- NOTES:
- SERVICE VOLTAGE SHALL BE AS INDICATED ELSEWHERE IN THE DRAWINGS.
 - UNLESS OTHERWISE INDICATED, ITEMS AND WORK SHALL BE INCLUDED AND PAID AS PART OF ELECTRIC UTILITY SERVICE INSTALLATION.
 - CONDUIT AND CONNECTOR DIAMETER SHALL MATCH THE DIAMETER OF THE SERVICE CONDUCTOR RACEWAY AS INDICATED.
 - PVC COATED RACEWAYS AND ACCESSORIES SHALL BE CAREFULLY INSTALLED WITH MF RECOMMENDED TOOLS AND PROCEDURES TO AVOID DAMAGE. ANY DAMAGE SHALL BE REPAIRED WITH COMPATIBLE PVC TOUCH-UP MATERIAL TO THE SATISFACTION OF THE ENGINEER OR THE DAMAGED MATERIAL SHALL BE REPLACED AT NO ADDITIONAL COST.
 - THE CONTRACTOR SHALL OBTAIN INSPECTION AND APPROVAL BY THE ENGINEER OF SERVICE RISER GROUND ELECTRODE RISES BELOW, BEFORE BACKFILL AND SHALL ALSO OBTAIN INSPECTION OF SERVICE RISER AND SEALING BEFORE UTILITY "U" GUARD INSTALLATION AND SERVICE CONNECTION.
 - THE SERVICE METER SOCKET, AS APPLICABLE MOUNTED ELSEWHERE AS INDICATED SHALL BE INCLUDED AND PAID AS PART OF THE ELECTRICAL UTILITY SERVICE INSTALLATION PAY ITEM.
 - THE SERVICE CONDUCTOR RACEWAY SHALL BE AS INDICATED AND SHALL BE MEASURED SEPARATELY FOR PAYMENT. WHEN THE RACEWAY IS PVC-COATED (USED GALVANIZED STEEL), THE COUPLING SHALL BE THE SAME. WHEN THE RACEWAY IS PVC CONDUIT OR CONCRETE, THE COUPLING SHALL BE A METAL TO NON METALIC ADAPTER. WHEN THE RACEWAY IS ENCASED IN CONCRETE, THE CONCRETE SHALL EXTEND TO COVER THE COUPLING.
 - PLANS AND DETAILS INDICATE THE GENERAL NATURE AND REQUIREMENTS. THEY DO NOT SHOW EVERY ACCESSORY AND ATTACHMENT, AND THEY DO NOT BELIEVE THE CONTRACTOR OF THE REQUIREMENTS OF THE SPECIFICATIONS AND SPECIAL PROVISIONS TO ASCERTAIN UTILITY REQUIREMENTS AND TO COORDINATE ACCORDINGLY, FURNISHING ALL ITEMS AND WORK NOT PROVIDED BY THE UTILITY, BUT NECESSARY FOR A COMPLETE SERVICE INSTALLATION.



REVISIONS	
NAME	DATE

ILLINOIS DEPARTMENT OF TRANSPORTATION

OAK PARK AVENUE
STREET LIGHTING
LIGHTING DETAILS

SCALE: VERT. NA
HORIZ. 1"=50'
DATE 4-6-07

DRAWN BY PS
CHECKED BY TRL/DWS

ROBINSON ENGINEERING, LTD.
1700 SOUTH PARK AVENUE, SOUTH HOLLAND, ILLINOIS 60470
708.328.4700 FAX 708.321.3600
ILLINOIS DESIGN FIRM REGISTRATION NO. 15407128